



THE LYMPSTONE HERALD

Dec 2013

Volume 37, Number 4

50p
where
sold



NEWS FROM THE PARISH COUNCIL

Cliff Field

On Saturday 23rd November, at 10.00am a gallant team of volunteers from Lympstone Scouts and Lympstone FC turned up at Cliff Field to lay plastic tiles to protect the surface at the entrance of Cliff Field.

Able led by Cllr Peter Acca, they soon got into the swing of things and made rapid progress in laying a Geotex membrane that goes underneath the tiles and then laying the tiles themselves. These all lock together and so should form a stable and long lasting base for vehicles to drive on occasionally.

The back-breaking part of the job was digging out the pile of top soil, barrowing it onto the tiles and then spreading it with rakes and brushes to fill the mesh and leave a clean finish.

Good progress was made but it was

clear that this was by far the biggest part of the job and so the cavalry in the form of Andy Love and his digger were called in. Andy was able to dig out and drop into place buckets full of soil in minutes. This made the task so much quicker and easier. The whole job was just about finished by 2.00pm

Scouts, Cubs and Beavers were there helping to break up the soil and did a sterling job in providing Tea & Coffee and bacon sandwiches. All in all it was a great way to spend a sunny Saturday morning with a great result for the village. **A BIG THANK YOU TO ALL THAT TURNED OUT TO HELP.**

*Clerk to the Council: A J Le Riche,
DMS, 43 Salisbury Road, Exmouth,
EX8 1SL, Tel 279665/ 07866 535580
clerk@lympstone.org*

Editor: Chris Carter, Tel 274104. Copy editor – P Acca
Deputy Editors - Terri Scott & Jan Teague, Advertising - Liz Griffiths

Lympstone web site – www.lympstone.org

Copy deadline for the next issue – Tuesday Jan 7th by 10 am
Copy by e-mail, if possible to chriscarterathome@hotmail.com

The Editor at Hillcrest, Greenhill Ave, Lympstone, EX8 5HW

Distribution by the Telfers, Tel 272275 and others

Cont



Parking restrictions (Yellow Lines) in Lympstone

DCC has asked the Parish Council to look at areas where parking restrictions might be made.

The Parish Council consider the following areas might be suitable:

Longmeadow Road

From No 8 Bakers Cottages to the entrance to Leustona to allow room for the gritter lorry to pass.

Outside Brendon - to allow room for the gritter lorry to pass.

At the junction with Strawberry Hill – check the parking prohibition associated with the stop line. If this is in place then no further action is needed.

Church Road

Outside the entrance to Lympstone Nurseries. To enable vehicles to proceed without driving onto the cobbles. There is also a problem of speeding in this area which may need alternative traffic calming.

School Hill

To join the double yellow lines at the bottom of School Hill to where the road widens. There is a need to discuss management of the extension car park with VHMC to make sure that residents living nearby are offered licences to park in the evenings and weekends.

Meeting Lane

There is a wish for a designated 'Bus Stop' marking to prevent obstructions for busses.

Dawlish Park Terrace, outside no 9 & 10 Dawlish Park Terrace to allow the gritter lorry to pass. The Working group felt that as there is no off-street parking and the gritter lorry only passes a few times each year, no restrictions are needed but the occupiers of these properties should be informed of the problem and asked to park elsewhere when the gritter lorry is likely to pass.

Sowden Railway Bridge, no need for restrictions but ask DCC to clear the carriageway of silt and vegetation on each side to effectively widen the carriageway.

The Strand, under the railway bridge, the existing restriction on the north side could be reduced to allow parking for one extra vehicle.

Burgmanns Hill, From the two telegraph poles at the east end of The Avenue to the existing yellow lines North of Greenhill Avenue.

(The above were discussed at the meeting on the 2nd of December to be concluded at the January meeting. Ed.)

Clerk to the Council: A J Le Riche, DMS, 43 Salisbury Road, Exmouth, EX8 1SL, Tel 279665/ 07866 535580 clerk@lympstone.org

FROM THE EDITOR

Hedges, particularly those containing brambles, are a real nightmare. Cyclists, the partially sighted and those who are old and too slow to react to these face slashing weeds are all vulnerable to such menaces.

If you have a garden with overgrown hedges, whether or not they contain such weeds, must by law be kept in check. Failure to have hedges cut back so that they are contained within a garden boundary will result in, as a minimum, a bill (usually extortionate) from the local council, for work that most people can do for themselves. Numerous cases of overgrown hedges have been reported to the Parish Council which is prepared to use the full force of the law to curb what is a danger to all.

A supply of (empty) sandbags is available from Richard Eastley or Alfie Beer – give them a ring if you feel vulnerable to flooding.

Broadband updates are creeping into the village. Give me a call or send me an email (we don't need to publish it) if you have had it installed.

Cllr Chris Carter

COURTLANDS PLANNING

I am able to report that the latest planning application by Strategic Land Partnerships on land to the North West of Courtlands Cross has been turned down by EDDC. The application was rejected by EDDC officers without referral to the main Management Development Committee - thus demonstrating their confidence in their decision. Thank you to all those who took the time to write or e-mail EDDC - it does work. I await further developments!

Rob Longhurst

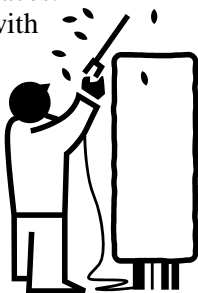
BEST KEPT VILLAGE COMPETITION 2014

Judging May – July next year

A stalwart bunch of villagers met on Sat 30th November to pick litter. The party concentrated on Candy's Field, Cliff Field and Underhill. Thank you all.

Please continue to take care of these community spaces and other areas you regularly use; this should be easier when the hedges have been trimmed. A reminder that there are recycling facilities at the Village Hall.

Terri Scott



OPPOSITION TO THE ESTUARY TRAIL THROUGH LYMPSTONE

Many of you will have seen the TV and press coverage about Lymptstone's efforts to get an additional safe route

incident, while residents and visitors wishing to enter the village can do so easily. The village will therefore remain a safe and attractive environment, and visitors will continue to enjoy the services of the local



for the Exe Estuary Trail through the village. Any reporting tends to put their own slant on the issue, so just to be clear the Trail Action Group position,



which is supported by the Parish Council, is that the development of a route along the railway line with clear access points to the village would benefit everyone.

It would enable commuter cyclists, joggers and others who don't wish to stop in the village to pass by more quickly with less risk of

businesses. We are not anti cyclist and we welcome people to the village. If you support the development of an alternative route remember to sign the petition – there will be a copy at Londis and at the Post Office until the end of December.

The Accident Book is also still in the Post Office and it is important that we keep records of accidents and near misses to provide evidence of the safety risks – so if you witness an accident please record the details there or email them to patsquire12@hotmail.com

Judith Carter

LYMPSTONE POST OFFICE

The Post Office will open in its new home, the Londis Store on 4th December.

A number of villagers have expressed their thanks through The Herald to Gillian Freeman for coming out of early retirement to keep the Post Office running and oversee the smooth transition of the move.



Thank you, Gill.

METHODIST CHURCH Chapel Road.

On Christmas Eve at 5.30 p.m., Revd David Easton will be leading our 'Carols Round The Crib' Family Service. Everyone is very welcome to join us as we put aside the stresses and strains of Christmas preparation and think about the birth of Jesus. Coffee and mince pies will be served after the Service. The Church will be open as usual for Morning Worship on Sundays during December from 10 a.m with the service beginning at 10.30 a.m.

For details of hiring the premises, please contact Gillian Hipkins on 224442, gillianhipkins@hotmail.co.uk.

Margaret Wearn



LYMPSTONE ARTS AND CRAFT SHOWCASE

Our Annual Christmas Craft Fair will take place on Saturday 7th and Sunday 8th December, from 11am till 5pm on both days. Lots of hand made gifts, cards, stocking fillers, jewellery, tree decorations and more! Find us at: The Studio, Brook End, (opp. Harefield Cottages, Lymptone (down the lane by the former Post Office).

Tea, coffee and home made mince pies. Come and join the fun!

Lin Holdridge

THE MAKING OF MACBETH FILM AND BANQUET



We have now sold out for the showing of the film of *The Making of Macbeth* on Saturday 18 January. If you would like your name to be put on the waiting list, please phone Sue Mildenhall on 260500.

We hope to have dvds of the production of Macbeth itself (2-disk dvd) and the Making of Macbeth (single disk) available to buy after Saturday 18 January. Please look out for further details in the New Year.

Suki Commis, Lizzie Hodge and Sue Mildenhall

PARISH CHURCH

Advent is here bringing to mind thoughts of a Happy Christmas!

Advent is a period of waiting, as the Christian Church prepares itself for the Christ child. It signifies the start of the Church's calendar and is a time of great excitement, as we get ready for the joy of Christmas. It's also a time when we are invited to deepen our faith, to walk more closely with our brothers and sisters in Christ, and to prepare ourselves spiritually for the Nativity.



Services leading to and at Christmas. There will be many opportunities to think about the importance of this very special day in the Church this December.

Sunday 15th Advent 3 services at 8 am and 10 am Morning Praise with 9:30 breakfast

Monday 16th December at 7 pm the candle lit Carol Service.

Tuesday 17th and 18th Lympstone School Carol Concerts (time from the school)

Thursday 19th Lympstone School end of term service at 9.20am

Sunday 22nd December Advent 4 services at 8 am and 10 am

Sunday 22nd December at 5 pm the Christingle Service

Wednesday 25th December Christmas Day services at 8 am and 10 am (both with Eucharist)

Sunday 29th December at 5pm Reflective Taize style service

Mince Pie Appeal There is a list at the back of the church which asks for volunteers to make or provide mince pies for the Carol Service on 16th December.

The Clock

You may have noticed by sight and sound the clock is at 12 and stationary. This is because the face needs a lick of paint and the mechanism an overhaul. Normal service will be resumed as soon as possible. We thank the Parish Council for the grant of £335 toward the total £1,600 cost.



Adopt a Grandparent?

Are you willing to become an adopted Grandparent or Aunt/Uncle for a Marine family? Would you like to get to know a family, perhaps to babysit, support by sending birthday cards and remembering them at Christmas (next year!) If the answer is yes then please contact Katherine Lyddon (07974528880) as soon as possible so that you could be matched up with a family. They would welcome support from you.

2014 Diary

Pocket sized diaries are available, free of charge, in the church now. If you wish to give a donation place it in the collection or the box in the church porch.

The weekly pew sheet is about to have a new editor. Philip White is taking on the task from the beginning of December so all contributions to him on 01395 26469 or by email to pcw_31@btinternet.com.

Word processors always think for you and underline email addresses. It means that an address like Philip's is unclear to my eye. That's pcw(underscore)31 and so on.

Do use the Church website www.lympstonechurch.org

Brian Mather

VILLAGE CONCERT

Feb 8th 2014

The Village Concert 2014 presented by Lympstone Entertainments

Don't forget to write the date in your new diary, *Village Concert, February 8th, Matinee at 3 pm, Evening performance 7.30pm.*

The Hottest tickets in the village calendar will be on sale from 2nd January from the Lympstone Entertainments Box Office, now managed by Demelza Henderson at 2 Brookfield Cottages, The Strand, Lympstone (opposite the 'former Post Office'). Telephone 01395272243 or phone our dedicated ticket mobile phone 07516 322 853. Matinee tickets are £6 and £2 for 5 to 16 year olds, evening tickets are £8 and £5. PS



there is still time for you to volunteer an act, so contact John Welton on 01395 271915 or e-mail johnwelton68@gmail.com.

John Welton

LYMPSTONE HISTORIC HOUSES GROUP

A talk by the Chair of the Walronds Preservation Trust is on Tuesday 21st January at 7.30pm in the Methodist Hall. Walronds is a splendid Grade I listed house in the centre of Cullompton dating from the early seventeenth century which was on English Heritage's buildings at risk list for a number of years. Renovation work is currently underway and due to be completed in March 2014. Come and hear how this has been achieved and about the future envisaged for the house and garden.

Helen Dimond

FRIENDS OF THE CHURCH LOTTERY

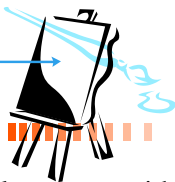
November's lucky winner of £25 in the Friends of the Church Lottery is Mrs Pat Dearsly. Exciting time coming up as we always have two winners in December!



Clive Wilson

ART WORKSHOPS

Lympstone Art Group is running the following workshops in the New Year.



Marine Painting in Oils with Roy Lang on Wednesday 22nd January - Roy will work step by step with you covering each element of a seascape and its composition and you will work to produce a seascape capturing many of its aspects, crashing waves, foam bursts, rock spills, and reflections .

On Wednesday 12th February Rebecca de Mendonca will be running a Pastel Workshop focusing on various pastel techniques used in landscape, still life and portraiture. Both workshops will run from 10am to 4pm and each will cost £30 per person. If you are interested in attending either workshop contact Mai Targett Tel 01395 271915 email maitargett@btinternet.com

Judith Carter

WINTER FILMS FROM THE FILM SOCIETY

December and January films to enjoy:

Tuesday December 10th: matinee (2.15pm) at the Methodist hall: Hitchcocks's *Strangers on a Train* (1951)

Friday December 13th: evening (6.45 for 7.30pm) at the village hall: *Anna*



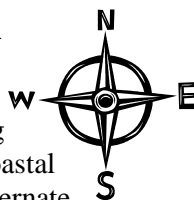
Karenina, (2012 – an epic romantic drama). We also have a Russian short film.

And before the next Herald is out - Friday January 10th at the village hall: *A Late Quartet* (2012, drama against an excellent musical background).

Our Friday films have been particularly well-attended this year. Remember that you can bring guests and visitors, who pay £5 at the door. Doors open at 6.45 with bar then and in the interval.

Don Mildenhall

RYA SHOREBASED COASTAL SKIPPER COURSE



Lympstone Sailing Club is running a Coastal Skipper course on alternate Saturdays over 12 weeks, 9.30am to 5pm starting Saturday 18th January and finishing Saturday 5th April. The course content is on the RYA website. It includes 40 hours tuition and there is also about 20 hours homework over the period of the course. Although this is primarily for club members there could be some spare places for non members. if you are interested in a place please contact judith_carter@hotmail.com Tel 274104

Judith Carter

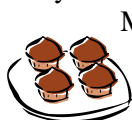
LYMPSTONE SOUTH WEST TELECOMS BAND



Both the Senior and Training Bands are busy rehearsing for the Christmas engagements taking place in December. As stated in the November newsletter the Senior Band will be featuring in the recording of BBC Radio Devon's Christmas Service, on Tuesday 17th December, which is to be broadcast on Christmas Day. The Senior Band along with the Training Band will be performing a Christmas Concert in the Lymptone Band Centre on Friday 20th December commencing at 7:30pm. The programme of music will include Christmas favourites and the odd Christmas Carol or two. Refreshments will be served during the interval and tickets are available on the door, on the night, £4 each for adults, with free entry for children under 16.

The Training Band

Please come and support the Training Bands' bands next engagement which is on Saturday 7th December. This event is in aid of The Friends of Lymptone Furry Dance who are holding a Santa,



Mulled Wine
and Mince
Pie morning
at the



Globe Inn from 10.30am to 12.30.

To find out more about the Senior Band and the Training Band, please take a

look at the Bands' website <http://www.lympstoneband.co.uk> or contact Robbie Steel on 07951 839654. Finally the Lymptone Senior and Training Band would like to wish all a very merry Christmas and a Happy New Year.

Robbie Steele

LYMPSTONE MUMMERS ARE AT IT AGAIN



As is now customary, the Mummery will bring our Village's traditional Mummery Play to Lymptone's hostelrys on the Saturday before Christmas (December 21st). The script, handed down over generations, compresses a history of England's hostilities – from the Crusades onwards – into a noisy ten minutes of violent defeat and rude revival of past foes. The troupe of six players will burst into the Saddlers at around 8.30, fight their way through the Redwing at 9 and the Swan at 9.30 to arrive at the Globe by about 10pm. A collection will be taken for the Children's Society. On the previous night the Lymptone play will be taken to Topsham, by train naturally.

Tony Day

BOXING DAY SWIM AND SNOW (as 2010, picture below)

Come and join the Boxing Day Swim at the Boat Shelter at midday. Either take the plunge or cheer others on. Changing facilities are available at the Sailing Club and hot drinks and soup will be served in the clubhouse. Come and support a growing Lympstone tradition.

Lympstone Sailing Club will have buckets for contributions towards funding two new training boats so bring some small change.

Judith Carter



OUR MOBILE LIBRARY SERVICE



The Librarian tries his very best to drive the van to the usual parking place at Underhill car park. If access is impossible, he will park the van at the bottom of Station Hill, or if that is blocked, park for a short time in the Saddlers car park.

Next visit: - Dec.20th 2014: Jan. 17 and 31

Dianne Letcher

LYMPSTONE BELLRINGERS NEW YEAR'S EVE

We will be ringing in the New Year at the Parish Church from 11.45pm. Do come and join us for a glass of mulled wine and another mince pie. Everyone welcome.



Ian Scott



ANOTHER YEAR OF SCOUTING IN LYMPSTONE

The Cubs visited the Exmouth Police Station and were kitted out in various Police uniforms, enjoyed climbing over a Police Car and were given a very instructive presentation on being safe plus a demonstration of how to handcuff a Leader!



The Scouts recently had an enjoyable evening on the Dry Ski Slope @ Plymouth and following on from attending the Remembrance service at Lympstone Church are now looking forward to a their trip up the Church Tower.

We had a successful Christmas Bingo evening and our sincere thanks to all those who joined us and made the evening such fun, sorry that FC had a problem with his sledge and so couldn't join us this year, but he has noted it for 2014!

Recently a number of our Executive, Leaders & Beavers,

Cubs & Scouts under the guidance of Councillor Acca & Clerk Tony undertook the work at the entrance to Cliff Field, I'm sure you will recall the problems in organising this work earlier in the autumn, well stage 1 is now complete and following seed planting, a final top layer of soil will be laid, then we hope the environment we do the rest. PS the Bacon sandwiches were good!!!



The Scout Christmas Post is in full swing, see details elsewhere in this Herald.

Please note *Exeter* is now included!

Cubs have again displayed their Christmas Tree @ A la Ronde during its festival.

The Executive Committee, Leaders and youngsters wish a Very Merry Christmas and a Happy New Year to

everybody in Lymptone and hope that some Adults will join us as Volunteers so we can continue to give the Scouting Experience across our age ranges ~ please contact Mike Goom (AGSL)

@ 01395 740162 or via mikegoom@freeuk.com

POLICE

Overnight of the 9th November a car parked in Glebelands had its driver's side window smashed. The vehicle was parked on a private driveway. If anyone has any information, please contact Police quoting KE/13/2691

Overnight of the 7th November a garage was entered and a bike was stolen for the area of Edinburgh Crescent. The bike is a specialised red tarmac with grey pedals. If anyone has any information, please quote KE/13/2670

On the 18th November a business premise on Courtlands Lane was burgled and four batteries were stolen. A silver Peugeot 206 was seen in the area at the time. If anyone has information regarding this theft, please contact Police on 101 quoting KE/13/2818

A vehicle parked on Long Meadow Road has had damage caused to a rear



panel. This occurred between the 29th and 30th November. The vehicle was parked on the road. If anyone has any information regarding this criminal damage, please contact Police quoting KE/13/2850.

You will probably be aware of the recent spate of Burglaries in Trafalgar and Gibraltar Road. I can report that we have had no further problems reported at this point. The investigation into this spate of burglaries is continuing and we encourage residents to continue to be vigilant and report anything suspicious.

I would like to wish all residents a very Merry Christmas and New Year and would like to thank you for your continued support.

Best wishes

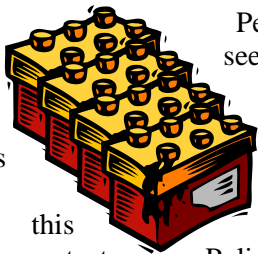
PCSO Sarah Trayhurn 30110

General Enquiries 101


sarah.trayhurn@devonandcornwall.pnn.police.uk

NB The Pretty Corner end of Longmeadow Rd will be closed by engineers clearing "a blocked duct" on the 31st of January 2014. Diversion in force via Strawberry Hill.

(Probably for the broadband cable. Ed)



SCOUTS CHRISTMAS POST

We deliver to ~ Exeter; Pinhoe;
Topsham; Clyst St Mary; Clyst St
George; Exton; Ebford; Broadclyst;
Exminster; Budleigh Salterton;
 Lympstone; Woodbury;
Woodbury Salterton;
Yettington; Otterton; East
Budleigh and Newton Poppleford.

Note NO deliveries to EXMOUTH or Other locations not listed above. Cards can be posted from 29th November until 19th December 2013 Collection Box will be in LONDIS STORE. Cost 30p per card, please drop money in box with card(s)

Mike Goom

LYMPSTONE W.I

To lead us into the Christmas spirit we were given a fascinating talk by Mrs Diane Janes, a local author, on Festive Literature, in which she explored Christmas in fiction from “Rudolph the Red Nosed Reindeer” to John Betjeman’s “Christmas”, via readings from works by Dickens, C.S. Lewis, Pam Ayres etc.!

Then a few notices:

A visit arranged to the Met Office on Saturday, 1st February at 1.00 p.m. (need to take I.D.)

Christmas evening meal confirmed for Tuesday, 14th January at the Swan Inn at 6.30 for 7.00 p.m.

“Winter Warmers” lunch at Sailing Club on Tuesday, 25th February.

Visit to Quicke’s Dairy followed by pub lunch on Tuesday, 26th March.

Members have been asked to vote on which of the 4 Resolutions they would like to be selected for the National WI 2014 campaign:

1. Increasing organ donation
2. Funding for women’s centres to cater for the specific needs of vulnerable women at risk of offending
3. Campaign against female genital mutilation
4. Provision of non-acute hospital beds

These will be discussed at January’s meeting and voted on using the secret ballot forms which we have all received in the W.I.Life magazine.

Then followed a scrumptious tea and “lucky dip” presents, finishing with enthusiastic singing of some traditional Christmas songs.

Our next meeting is on Wednesday, 8th January, at 2.30 p.m. in the Committee Room of the Village Hall. The talk will be “Associated Country Women of the World (ACWW)” by Mrs Roma Patten. Further information is on our dedicated website link on www.lympstone.org (Social section) or phone Diana de la Rue on 01395 274099.

Heather Stratford

DISCLAIMER

This news letter is compiled from emails sent to the editor by numerous people and very little of the information is checked before publishing which is done in good faith!

Chris Carter, Editor

THE GLOBE INN



THE STRAND, LYMPSTONE T: 01395 263166

EAT:

Dine around the Globe at The Globe is still going strong.

This months delights are:

Monday 9th – Greek night

Monday 16th – The Great British pie night

Saturday Night Steak night! 2 Steaks & a bottle of wine from £20

DRINK:

Ange & Mike are so pleased to announce that we received our very first visit from Cask Marque & we were delighted to receive 20 out of 20 for our real ales!

BE MERRY:

We've so many exciting things happening here at The Globe Inn

Over the Christmas & New Year period.

**Why not join us for a glass of your favourite tipple by our beautiful open fire
at any or all of our following events:**

Friday 6th – Honest John & Ray Beavis @ 9pm

Saturday 7th – Furry dance Christmas Fete from 10.30am

Friday 13th – The Shelly Beach Boys @ 9pm

Saturday 14th – Lymptone Football Club Christmas Draw from 7pm

Friday 20th – Ian Boyd @ 9pm

Sunday 22nd – Christmas Carols @ 8pm

Monday 23rd – The Globe Inn Villagers Christmas Party,

Free buffet & pub Christmas Raffle from 7pm

Christmas Day – Open from 11am till 2pm

Boxing Day & New Years Day – Seafood Platter Spectacular

Book Now

New Years Eve - Talitha is back for you to sing & dance the night away into a fabulous New Year – Late bar till 1am.

WISHING YOU ALL A WONDERFUL CHRISTMAS

& NEW YEAR

FROM ALL THE TEAM @ THE GLOBE INN



KINGS

Garden & Leisure

**LARGE RANGE OF
CHRISTMAS TREES AND
DECORATIONS IN STOCK!**

**JOIN SANTA IN OUR RESTAURANT
for a family breakfast 9am-11am**

Every weekend leading up to christmas + christmas eve - booking only. Ring for more details.

VISIT HIM IN HIS GROTTTO

11am-4pm

11am-1pm christmas eve



**Don't miss our superb
Restaurant & Coffee Shop
*where everything is home made!***



Higher Hulham Road, Exmouth, Devon, EX8 5DZ

01395 271911



CARNIVAL HOUSE FANCY DRESS

To avoid disappointment, book early for Xmas and New Year. Also more costumes to buy this year and all the accessories you will need. We also sell picture frames and mounts.



Contact Carnival House, 5 Exeter Rd, Exmouth EX8 1PN

Phone 01395 224664



Chris Cheverst
M&bility
01395 200 882
79 Exeter Road
Exmouth. EX8 1QD



The logo for hedgerow marketing, featuring the word "hedgerow" in a green speech bubble with "marketing" written in smaller text below it.

Give your business a boost!

Do you need an experienced sales and marketing professional – but on a part-time or project basis? I can help with:

Telesales and appointment generating
Direct mail, eshot marketing campaigns

Website design/content management
Business Development and new lead generation. PR and press releases .

Based in Lympstone, can work from home or your office. Free initial discussion! Please contact me on

lesley@hedgerowmarketing.co.uk

www.hedgerowmarketing.co.uk

EXE-GAS



Plumbing & Heating

Boiler breakdown & service

New installations

Fires & cookers fitted & serviced

LPG systems

Plumbing

Home. 01392 877345

Mobile. 0787 1621157

**SPECIAL INTRODUCTORY
OFFER!**

FULL BOILER SERVICE - £50

LUSH HAIR STUDIO



Lush Hair Studio is offering for one month only throughout December a Ladies Dry Cut for £11.95, Mens' Haircuts for £5 and Childrens' Cuts at £3.50. Our opening times are Tuesday to Friday 9 to 5 and Saturday 9 to 4. For an appointment call 01395 274089.

Dry Cut £13.95 Wet Cut £15

Cut & Blow Dry £22.50

Shampoo & Set £12.50

Cut, Shampoo & Set £17.50

Perm with Cut & Finish £52.50

Perm Half Head, Cut & Finish £45

Weaved Foils, by consultation

Full Head Tint, Cut & Finish £46

Semi/Demi Colour, Cut& Finish £40

Mens' Cut £7

Children under 11 Cuts from £5

WALK IN WELCOME

Thinking of selling in 2014?

**Did you know Wilkinson Grant & Co
have agreed sales, sold and
exchanged contracts on over
£3.3 million worth of property in
Lympstone alone in 2013?**

For an up-to-date valuation on your home,
from an award winning local agent,
with genuine regional and national
coverage, ensuring your property is seen
by as many buyers as possible,
please contact

Wilkinson Grant & Co on
01392 875000 or email
topsham@wilkinsongrant.co.uk

Rob Hilton Architecture

Your Local Architect



We offer a personal, creative and professional design service for your project.

- Design expertise
- Planning applications
- Building Regulations documentation
- Detailed drawings
- Construction co-ordination

Call for a **free initial consultation:**

01395 224 829

www.robhilton.co.uk



DOG GROOMING

Kind & Qualified Groomer.

Commissions for PET



PORTTRAITS

in pastel also undertaken.

Make Superb Presents.

(Examples of work can be viewed).

Tracey Crompton, Greenways,

Courtlands Lane, Lymestone.

Tel: 01395 272815 /07973 986 268.

IAN L MOIR

PROPERTY MAINTENANCE

Painting, decorating, pressure washing, window and gutter cleaning, fencing, decking and much more. All jobs to keep your property in tip top condition. I am Lymestone based and offer free no obligation quotes.

Contact Ian on (home) 01395 263 716
Mobile 07702 804537

PROPERTY MAINTENANCE –

James Waddell Interior & Exterior, Carpentry, Flooring, Fencing & Gates, Plumbing, Decking, Bathrooms & Kitchens, General Repairs. Free advice & Estimates. 01395 263496

SIMON QUICK THE LOG MAN

For all your coal, kindling & gas supplies - Tel 01395 267490

CARNIVAL HOUSE FANCY DRESS 5 Exeter Rd, Exmouth EX8 1PN Phone 01395 224664

60p a line for an advert just here

ENGLISH TUITION: Experienced English Tutor available to teach English, Literature, Essay Writing and Study Skills at GCSE level and beyond. Tel: Sharon Wayland on 274551.

PRISTINE CLEAN - Domestic ironing and cleaning services. Local lady. Call Niki - 01395 740727

FOOT HEALTH PRACTITIONER - Lindsey Waddell MAFHP. Nail Cutting and Treatment of Corns, Callus and Verrucas. Home Visits. 01395 263496

CLOCK REPAIRS

Terence C. Matthews - Horologist
Westminster Chimes
Wall Clocks
Grandfather / Grandmother Clocks
Dial Clocks



Case Clocks
age Clocks

Free estimates and house visits
01395 273563

Find some winter sunshine!

Comfy casa near the Costa Blanca, Spain

Peaceful, two-bedroomed home. Roof terrace, gorgeous views, communal pool and tennis. Beaches, cycling, golf, hiking and more. Suits all ages. Flights from Exeter & Bristol

Lympstone residents 15% discount
Tel: 07986 607610
www.algorfaholiday.com

FOOD WITH FLAIR CATERING

Small and Large Events -
Menus to Suit your Budget
Telephone Shirley or Michael
on 265147 or see our Website
www.foodwithflair.co.uk

ELECTRICIAN

Specialising in domestic work;
happy to do small jobs.

Call Simon on: 07985 963075

**COMPUTER
REPAIRS**

**ELECTRO
COMPUTERS**

NO FIX - NO FEE

01395 548151 / 07944 051987



Peter J Acca

Carpenter/Joiner
Specialist PVCu
Window Repairs
Replacement double glazed sealed units
01395 489791
07801365097
Let me make your old windows like new

PROPERTIES WANTED!

A continued increase in bookings means we are looking for more holiday letting properties to add to our portfolio:



EATON-TERRY CLARK
EXMOUTH HOLIDAYS

HELPING TO MANAGE YOUR PROPERTY MORE EFFICIENTLY

HOLIDAY LETS

RESIDENTIAL LETS

BLOCK MANAGEMENT

Tel: 01395 269955 Email: info@exmouthholidays.co.uk

www.exmouthholidays.co.uk

Members of ARLA and ARMA



DustAway

All Work and no play, we are here to help

Friendly Efficient Cleaning Service

Lympstone Based

Weekly, fortnightly, monthly

One off cleans ie moving house, holiday lets,

End of tenancy cleans, just redecorated or a spring clean

We also offer an ironing service

All materials supplied. Fully insured

Please call Tracey 07727168817 or Jill 07818484864

www.dustaway-cleaning.co.uk

SMALL ADS

EXE SALMON FRESH OR SMOKED Reasonable prices 07593 697469 chadfish@hotmail.co.uk

LYMPSTONE GREETING CARDS AND POSTCARDS

Scenic photographs of your village - from the harbour, boats and washing-lines.....to sunsets and Lymptone Life! Available from Post Office or Frances Longhurst 263495

PREGNANT? Experience the magic of birth: release fear and tension, remain conscious, deeply relaxed, in control. Hypnobirthing antenatal classes: for more info phone 01392 412767 or see libbyclaphamhypnotherapy.co.uk

PICTURE FRAMING. For all your framing requirements; also frame restoration & chair caning. Caro Ambridge 01392 877460, Topsham.

DAWN 'TIL DUSK

Creative Gardening service Routine maintenance, Designs & Creates. 0786 6566 883 dawnc@live.co.uk

SIMON QUICK THE LOG MAN

For all your log, coal, kindling & gas supplies Tel 01395 267490

FOOT HEALTH PRACTITIONER - Lindsey Waddell MAFHP. Nail Cutting and Treatment of Corns, Callus and Verrucas. Home Visits. 01395 263496

PIANO with a VIEW Lessons for all ages, beginners and improvers, "purely for pleasure" and ABRSM exams to Grade 8. Theory to Grade 5. Tel: Judy Joss (BA Mus, Dip Ed) on 222749

MATHS TUITION Experienced tutor available to teach primary to GCSE level maths. Reasonable rates Tel: Jane Moffatt on 279952

SCIENCE TUTOR Qualified teacher available for GCSE and A level science tuition. Karen on 07807474183 or email karentrice36@yahoo.com

ACCOMMODATION

WITHALL'S HOUSE BED AND BREAKFAST. A modern and spacious home close to the heart of the village. Ample parking and flexible accommodation. Call Pete and Jan Hardy on 01395 270157 Or visit www.lympstonebedandbreakfast.co.uk Advertise here for just 60p a line

WHAT'S ON

DECEMBER

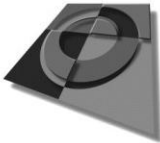
5/6 & 7 Xmas Ding Dong
6 Globe Christmas Party-Honest John and Ray Beavis
7&8 Arts & Craft Showcase
7 Furry Dance Xmas Event at The Globe with SWT Band
10 Film- Strangers on a Train
13 Film- Anna Karenina
13 Globe - The Shelly Beach Boys
14 Football Club draw
16 Candle Lit Carol Service
20 Globe Christmas Party- Ian Boyd
20 SWT Band Concert
21 Mummers Play
22 Christingle Service
22 Christmas Carols at The Globe

DECEMBER

23 Globe Villagers Christmas Party
24 Carols round The Crib
26 Boxing Day Swim
31 Talitha at The Globe
31 Ringing in the New Year

JANUARY

8 WI
9 Parish Council
10 A Late Quartet
17 Mobile Library
18 The Making of Macbeth
21 Talk-Walronds Preservation Trust
22 Art Workshop
31 Mobile Library
31 Long Meadow Rd Blocked



Optima Graphics

Topsham Ltd

silk screen, digital & litho printers

*We provide a high quality, good value
and prompt printing service.*

Silk Screen

Vinyl Stickers
Estate Agent Boards
Printing on:
Metal, Acrylic,
Plastic, Wood

Large Format Digital

Banners
Display Panels
Window Graphics
Pull-up Display Stands
Magnetic Vehicle signs

Litho

Brochures & Leaflets
Stationery
Labels & Invitations
Pads
NCR sets

T: 01392 873822

E: sales@optimagraphics.co.uk W: www.optimagraphics.co.uk

20b High Street, Topsham, Exeter, Devon EX3 0EA