

# THE LYMPSTONE HERALD

Jan 2014

Volume 37, Number 5

50p  
where  
sold



**HAPPY NEW YEAR  
FROM PARISH  
COUNCIL CHAIRMAN, CLLR  
RICHARD EASTLEY**

I would like to wish all residents of Lymington a happy and healthy 2014. Lymington is a particularly nice place to live. It is a warm and friendly village with a whole host of Clubs and Societies that are open to everyone. It is a place where there is always something going on so that young people and adults cannot complain that there is nothing to do!

All this is made possible by you. Whether you take a leading role in a Group or just go to events, exhibitions and entertainment that are held in the village, your involvement is an essential part of Village life. I hope that this year you will continue to support the Groups in the village and even consider taking part.

This year, the Parish Council, through Cllr Terri Scott, is preparing for an entry in the Best Kept Village Competition organised by the Devon branch of the CPRE. News on this will be on the website every month. Success could be a great accolade for us but this also needs your support. It is all about keeping the Village looking good, no more than that. Your part in this could be just sweeping the path outside your house but if you can go a little further by planting plants, picking up other little bits of rubbish or helping to keep weeds down from the wall and pavement edges. All this will help Lymington to shine a little bit more.

So in addition to my opening greeting, perhaps I should wish you a Happy, Healthy and Active New Year.

*Clerk to the Council: A J Le Riche,  
DMS, 43 Salisbury Road, Exmouth,  
EX8 1SL, Tel 279665/ 07866 535580  
clerk@lympstone.org*

---

Editor: Chris Carter, Tel 274104. Copy editor – P Acca  
Deputy Editors - Terri Scott & Jan Teague, Advertising - Liz Griffiths  
Lymington web site – [www.lympstone.org](http://www.lympstone.org)

Copy deadline for the next issue – Tuesday 4<sup>th</sup> Feb by 10 am  
Copy by e-mail, if possible to [chriscarterathome@hotmail.com](mailto:chriscarterathome@hotmail.com)  
The Editor at Hillcrest, Greenhill Ave, Lymington, EX8 5HW  
Distribution by the Telfers, Tel 272275 and others

## NEWS FROM THE PARISH COUNCIL

### **Parking in the Village**

Parking is one of the concerns that the Parish Council is looking to address this year. There are two sides to this. First and foremost there are many houses in the Village that do not have their own off-street parking and so there is a need for parking for these residents. The Parish Council has been consulted about two schemes that will provide extra off-street parking and this will be a great contribution to the well-being of the area. Parish Councillors have also heard from some people who have their own driveway but park outside their house to stop others from parking there. This is not a very sociable attitude to take and the Parish Council urges anyone who does this to think about taking a more understanding approach to parking.

There are also some areas where vehicles are parked on the road and this causes a danger or an obstruction to other traffic. Many of you will see the traffic cones that are put out in various places if the gritter lorry is expected to come through the village. These need to be respected and parking in these and many other areas should be done carefully and respectfully to avoid problems.

The Parish Council has walked through the village to see where there might be a need for new restrictions in order to

address the matter of safety and obstruction. The following list is to be considered in detail at the next meeting of the Parish Council on Monday 20<sup>th</sup> January 2014. Please let your Parish Councillor know your views and come along to hear the discussion.

**Longmeadow Road**, From No 8 Bakers Cottages to the entrance to Leustona and outside Brendon - to allow room for the gritter lorry to pass.

**Longmeadow Road**, at the junction with Strawberry Hill unless the "Stop" line is sufficient.

**Church Road**, outside the entrance to Lymptstone Nurseries. To enable vehicles to proceed without driving onto the cobbles. There is also a problem of speeding in this area which may need alternative traffic calming.

**School Hill**, extend the existing double yellow lines to where the road widens. There is a need to discuss management of the extension car park with VPMC to make sure that residents living nearby are offered licences to park in the evenings and weekends.

**Meeting Lane**, There is a wish for a designated 'Bus Stop' marking to prevent obstructions for buses.

**Dawlish Park Terrace**, outside No 9 & 10 Dawlish Park Terrace to allow the gritter lorry to pass. The Working Group of Parish Councillors felt that as there is no off-street parking and the gritter lorry only passes a few times each year, no restrictions are needed but the occupiers of these properties

should be informed of the problem and asked to park elsewhere when the gritter lorry is likely to pass.

**Sowden Railway Bridge**, no need for restrictions but ask DCC to clear the carriageway of silt and vegetation on each side to effectively widen the usable area.

**The Strand**, under the railway bridge, the existing restriction on the north side could be reduced to allow parking for one extra vehicle.

**Burgmanns Hill**, From the two telegraph poles at the east end of The Avenue to the existing yellow lines North of Greenhill Avenue.

The Parish Council will also discuss the need for designated disabled parking so if you have a need, please let your Parish Councillor know.

**The Neighbourhood Plan** is now with EDDC for them to carry out their part of the formalities. The Plan contains a number of Community Action Policies as well as planning policies. Cllr Rob Longhurst has ably led a village Working Group and the Parish Council through the various stages leading to approval of the Plan by the Parish Council and he was thanked for his hard work and achievement. He now wishes to hand over the reins to another Parish Councillor to keep the Plan moving. The Parish Council unanimously appointed Cllr Mrs Jenny Clark to be the new Neighbourhood Plan Champion. It will be Jenny's prime role to look for opportunities to

promote the Community Action Policies and to look for opportunities to see them implemented. Most members of the Village Working Group will continue to help in this but there is always room for new volunteers to get involved with the Community side of the Plan. Please contact Jenny for more information.

*Clerk to the Council: A J Le Riche, DMS, 43 Salisbury Road, Exmouth, EX8 1SL, Tel 279665/ 07866 535580 [clerk@lympstone.org](mailto:clerk@lympstone.org)*

## FROM THE EDITOR

### EAST DEVON WAY

A leaflet about this path and listing the businesses close to it is being prepared. If you would like to be included then please email me details.

### CONTACT

If you knew Captain Lionel/Leonard Bryson late of Lympstone then please contact Tony, the clerk to the Parish Council.

### HELP

Can you type? We need help editing this Herald. A couple of hours of typing and proof reading each month would make you one of the team that produces this well read magazine. (The original volunteers have now gone on to get paid employment)

*Cllr Chris Carter*

## PARISH CHURCH

Or, to give it's full title, the Parish Church of the Nativity of the Blessed Virgin Mary, Lymptstone. Part of the Mission Community of Littleham cum Exmouth with Lymptstone

### Services

8.00 am Lay Led Morning Prayer, 3rd Sunday Said Eucharist.

10.00am every Sunday Sung Eucharist except 1st which is Family Holy Communion and 3rd. Morning Praise  
5.00pm 3rd Sunday only Evening Service

11.00am Wednesday Holy Communion (Said)

Gluten-free wafers are available at our services. Communicants should make their need known before the service.

**Choir** – new members always welcome – more details from Philip White (264469)

**Children's activities** - More details from Katherine Lyddon, Children and Family Worker, tel:07974528880, email: katherine.lyddon@gmail.com

**Confirmation** - There will be confirmation preparation sessions starting soon for confirmation to take place 18th May 2014 at Lymptstone Church. If you would like to know more contact Revd James at the Parish Office 263681 or Revd Sid 274512, sid75@hotmail.co.uk or any member of the Ministry Team.

**Lymptstone Flower Guild.** Help! Our group of flower ladies are slowly

'wilting' in numbers!! Are there any 'budding' flower arrangers who would like to join our team? We are all of various abilities and would welcome some more arrangers. There would be plenty of support and help for anyone new – experienced or novice. Come and enjoy decorating our church. For more information contact Carol Major (266925) or see her in church.

**Tear Fund** - Everyone is invited to come and meet David Ley (of Tearfund) and learn how to communicate the Christian message by simply living out our regular daily lives.

Join us for tea and cake at 2.30pm on Tuesday 14th January, or for wine and nibbles at 6pm on Friday 17th January (or indeed both!). For more information, talk to Demelza (272243) or Ann Buxton (272193).

### DATES FOR YOUR DIARY

Sunday 12th January – Come and share a cup of tea, and sing some of your favourite Taize chants. No previous experience needed! 4.30 pm in Holy Trinity church. Contact Demelza for more details!

In the New Year, we hope to start a **Mission Community Primary Home Group**, giving children an equal opportunity to adults, to meet together, eat together and learn about God together. Jesus himself said 'Let the



little children come to me and don't stop them'. Allowing children to take bread and wine is definitely an image of what God's kingdom is like. Realising that children are his disciples now, not in the future, means we've understood that each of us is part of the Body of Christ. Katherine Lyddon.

**A WEEK OF GUIDED PRAYER**  
**SUNDAY 9 - SATURDAY 15**  
**MARCH 2014**

The Week of Guided Prayer is for anyone - you don't have to be a prayer specialist! It is a bit like going on a retreat without the travel, time and cost involved. (This is the week which had to be postponed in 2013.)

Please contact the office (263681) for further details, which will also be available in each church shortly. There is no charge for participating (there will be an opportunity to make a donation at the final meeting if you wish). More details in the Net, copies in church or on the web.

**PCC** meets on 29th January If anyone has a question or concern for the council please see Jill Wilson or phone 264753.

**PEW SHEET** – copy for publication (which is the primary source of material for this Herald report) should be sent to Philip White at 01395-264469, email: pcw\_31@btinternet.com by 9am on Thursdays.

**Lympstone Church** website:  
[www.lympstonechurch.org](http://www.lympstonechurch.org)

Holy Trinity Office is open 10am-1pm Monday to Friday. Tel: 263681.

Team Rector : Revd James Hutchings – please contact via the office or out of hours on 01395-225212.

*Brian Mather*

**POLICE**

Between the 1<sup>st</sup> and 2<sup>nd</sup> January a burglary occurred to a property in the area of Glebelands. The offender managed to gain entry to the property but nothing was stolen. If you have any information regarding this burglary, please contact Police on 101 quoting KE/14/47.

Please can I remind all residents to be vigilant at this time. If you see any person or vehicle acting suspiciously, please contact Police.

If you would like to join our community messaging system, please contact me on the details below. This is a free service which allows you to receive messages via telephone or email about what is happening in your area.

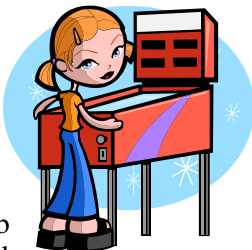
I would like to wish you all a very Happy New Year and I look forward to working with you in 2014.

*PCSO Sarah Trayhurn 30110*



## WHATS ON AT LYMPSTONE YOUTH CLUB

Senior Youth Club starts on Friday January 10th at 7p.m.  
Junior Youth Club the first and third Friday of each month from 5.00p.m. till 6.45p.m.



Tuesdays and Thursdays Kenpo Karate/kick boxing Children's classes start at 5.30pm and adults at 7.15pm  
For more details call Phil Cawood on 07544577715.

Zumba Wednesday morning 9.20am to 10.20am contact Sue on 07583242719.

*Eddie Mingo*

## THE VILLAGE CONCERT

Are you a Village concert Virgin? Never been before? I don't believe it! Tickets are selling quickly for the matinee (2.30pm) and evening performances (7.30pm) on Saturday 8th February in the Village Hall. Hurry and buy yours from the Lymptstone Entertainment Box Office c/o Demelza Henderson, 2 Brookfield Cottages (opposite the Lymptstone Newsagent). Prices - Evening £8 and £5 (ages up to 16) Matinee £6 and £1 (ages up to 16). Or order by phone on our dedicated phone number 07516322853

or 272243 . For any questions or late offers to perform contact Lymptstone Entertainments c/o John Welton on 271915, johnwelton68@gmail.com  
PS the Lymptstone Queens will be back.

*John Welton*

## LYMPSTONE FILM SOCIETY



Our January matinee on Tuesday afternoon, January 21<sup>st</sup> is *The Glenn Miller Story*. Film starts at 2.15pm in the Methodist Hall. Our February main screening is *Summer in February*, about a love triangle in Edwardian Cornwall. It shows at 7.30pm on Friday February 14<sup>th</sup> in the Village Hall. Tickets for non-members £5 on the door; bar from 7pm.

*Don Mildenhall*

## BEST KEPT VILLAGE Judging May-July



Apparently we are a nation of dog lovers. A new year's resolution for dog owners is to PICK UP AFTER YOUR PETS. Dog mess is an ongoing issue in Lymptstone, a black spot being Underhill. Please carry your poo bags and USE THEM.

*Terri Scott*

## EXE ESTUARY TRAIL PETITION



Thank you to the large number of people who signed the petition to Devon County Council to create an alternative route for the EET alongside the railway line from Sowden End to Lymptstone Station. We plan to send it to DCC soon. However, we have been advised that a petition only counts as one request (bizarrely). **To have any significant impact, we will all need to send individual letters as well.** Even if you did not sign the petition you can send a letter now.

This is a real opportunity to maximise the impact of the Petition - so please:

1. Write a letter to Devon County Council. The basic requirements are listed below, and a sample letter is available at the Newsagent (the old Post Office), from [www.lympstone.org](http://www.lympstone.org) (the Lymptstone village website), or by contacting one of the co-ordinators listed below. Note: If there are several people in your household, please write a letter each.

2. Put the letter (in an envelope) in the box at the Newsagent (the old Post Office) –by 29th January or give it to one of the coordinators .

No stamp is required; we are planning to hand deliver all of the letters together with the Petition and a cover letter to Devon County Council.

3. If you want assistance with writing letters or have any other questions visit

the stand under the bridge by the Station on Saturday 25th January from 10-12 am

4. Record any accidents or near misses in the new Accident Book in the Newsagent (old Post Office), or email details to [patsquire12@hotmail.com](mailto:patsquire12@hotmail.com). This is very important in order to provide evidence to DCC of the safety risks associated with the existing route.

### **Basic letter requirements:**

Address to Committee Secretariat, Office of the Chief Executive, County Hall, Topsham Road, Exeter, EX2 4QD.

Include your name and address.

Have a clear heading, e.g., ‘Request for an off-road route for the Exe Estuary Trail through Lymptstone’.

State your main reasons for requesting an alternative route. The most compelling reason is safety. (Include your own practical experience where possible).

Include any other reasons important to you, e.g. the negative impact on the village community along The Strand.

Sign and date the letter.

Coordinators’ contact details

Judith Carter, Tel. 274104

[judith\\_carter@hotmail.com](mailto:judith_carter@hotmail.com)

Pat Squire, Tel. 279242

[patsquire12@hotmail.com](mailto:patsquire12@hotmail.com)

Clem Davies, Tel. 277755

[clemvmdavies@aol.com](mailto:clemvmdavies@aol.com)

*Judith Carter - TRAIL ACTION  
GROUP - LYMPSTONE*



Lads and dads are being called to take part in a rugby day out for Hospiscare in 2014.

The 10k Hospiscare Men's Walk, sponsored by Wilkinson Grant & Co, is a great way to spend a lads' day out alongside friends and family members, with the male bonding continuing post-walk with a pint, pasty and three Six Nations rugby matches.

The third annual Men's Walk will once again commence from the home of the Exeter Chiefs on Saturday March 15.

The walk takes in spectacular views of the City as it goes through Ludwell Valley Park before heading back to the finish line at Sandy Park.

Hospiscare Event Fundraiser Hannah Slater said: "The chance to spend a day out with your mates or for fathers and sons to get together has made this 10k walk an extremely popular event in the Hospiscare calendar.

"This is a really fun event which is open to anyone aged 12 years upwards. Over the past two years, the Men's Walk has made its mark as a way for people across all generations, from grandfathers to grandsons, to enjoy a lads' day out together."

Registration for the 2014 Men's Walk is now open. Entry is just £15 and includes an invite to Sandy Park's Exeter Suite, after the walk, to watch the Italy v England, Wales v Scotland

and France v Ireland rugby matches on big screens, along with a free pint from Otter Breweries and a delicious pasty from Chunks of Devon.

Exeter Chiefs' Prop Carl Rimmer said: "Exeter Chiefs are happy to support Hospiscare, it's a great organisation and the walk is a brilliant idea - what better way to top off a 10k walk than with rugby and a pint."

More than 400 men braved hailstones and sweeping rain to take part in the walk last year, raising over £40k for local charity Hospiscare.

Event sponsors Wilkinson Grant & Co jumped at the chance to support Hospiscare at the 2014 Men's Walk after seeing the event's success in its first two years. As well as sponsoring the event, the estate agents will also be entering their own team for the walk.

*Tina Penberthy-Hutchings 01392 688097*

## THANKS

Sheila and family would like to thank everyone for the flowers, cards and messages of sympathy on their sad loss of John.

The kindness shown and the help given to John enabled him to fight his debilitating illness and make the most of life. Lymptstone certainly is an amazing place to live.

*Sheila Parker*



## LYMPSTONE HISTORIC HOUSES GROUP

There is a talk by the Chair of the Walronds Preservation Trust on Tuesday 21st January at 7.30pm in the Methodist Hall. Walronds is a splendid Grade I listed house in the centre of Culmpton dating from the early seventeenth century which was on English Heritage's buildings at risk list for a number of years. Renovation work is currently underway and due to be completed in March 2014. Come and hear how this has been achieved and about the future envisaged for the house and garden. Entry £3 at the door, to include refreshments.

*Helen Dimond*

## LYMPSTONE GARDEN CLUB

Now the Christmas and New Year festivities are over and you are looking for somewhere to go on the long winter evenings, why not come along to the Garden Club's second talk of the Autumn/Spring programme. It will be on Wednesday 5<sup>th</sup> February at 7.30pm in the Village Hall Function Room.

It has a local flavour as we have a speaker from A La Ronde talking about "The Gardens and Grounds of A La Ronde".

Refreshments will be provided. We look forward to welcoming you to this

and other talks on gardening subjects. Entry £3.

*Ian Stratford*

## AN ENCOUNTER WITH LIMPSTONE MUMMERS

Father Christmas, in traditional green regalia, bursts into an inn (which shall be nameless) in North Topsham. "In comes I, Old Father Christmas!" Young reveller, loudly: "You brought me a present?" The old gentleman, interrupting the hallowed script: "No, mate, sorry." Young reveller: "Well, naff off out again, then!" A little later, in the same jovial hostelry, King George cries "Who will fight me, hand to hand?" and a queue of willing volunteers set about disarming him. But they still clapped and cheered at the end. As did you, Lymptone. Thank you so much for that, from all the Mummers, who enjoyed themselves as never before around the village pubs on the 23<sup>rd</sup>. Thank you too, kind folk of Topsham and Lymptone, for swelling our collection for the Children's Society to the tune of £330.



*Father Christmas, aka Tony Day*

## LYMPSTONE HISTORY SOCIETY



Don't miss this opportunity to find out more about how local place names have evolved. On Thursday, 6th February at 7.30 pm in the Methodist Hall, Robert Hesketh will give an illustrated talk on Devon Place Names. He will examine the key aspects of place names in Devon, their origin and evolution. His slides will also show how place names relate to the landscape. There will also be a selection of books on the subject for the audience to look at.

*Diana Letcher*

## DEVON GARDENS

On Wednesday, 26th March, at 7.30 pm in the Village Hall, Lympstone History Society and the Lympstone Historic Houses Group are collaborating to organise a presentation entitled:- "An illustrated History of Devon's Gardens, 1200 to 1900" by the local historian, Dr. Todd Gray. This will be of interest to art historians and gardeners as well as members of the LHHG and LHS !



*Diana Letcher*

## A VERY MERRY CHRISTMAS DING DONG



Forced to abandon *Snow White and the Seven Dwarfs* the Players gave us not one but several pantos --- well bits of them -- and more too. So, we were treated to *Snow White and the Magnificent Seven*, *Seven Dwarfs* robbing not so wise Wisemen, rousing scenes from *Oliver*, and an audience-embracing finale of all *The Twelve Days of Christmas* -- and it didn't seem a day too long! Complete with snow on Saturday night!

Over 20 children were involved in seven separate scenes and everyone had opportunities to shine, whether acting, singing or dancing, helped by strong musical support led by Danny Lawrence and the high standards of costuming and sets. Wendy Watson was a brilliant Dame and her "*Santa Baby*" solo brought the house down. However, this was very much a family show -- -- with four sets of parents and their offspring and no fewer than five sets of brothers and sisters involved. So all in all an entertaining end to the Players 70<sup>th</sup> anniversary year. And encouraging to see so many youngsters and new faces amongst the older Players.

*Clive Wilson*

## ART WORKSHOPS

There are a couple of places left on the workshop, Marine Painting in Oils with Roy Lang on Wednesday 22nd January – if you are interested in attending this or the February Pastel Workshop contact Mai Targett Tel 01395 271915 email maitargett@btinternet.com. On Wednesday 12th February Rebecca de Mendonca will be running a Pastel Workshop focusing on various pastel techniques used in landscape, still life and portraiture. Both workshops will run from 10am to 4pm and each will cost £30 per person.



*Judith Carter*

## POPPY APPEAL

I would like to take this opportunity to thank once again all the folk of Lypstone who gave to the 2013 Poppy Appeal. I am overwhelmed by your generosity and am extremely pleased to report that I have banked an amazing £7025-28 on behalf of the village and the Commando Training Centre combined. An enormous thank you also to my willing band of House to House Collection volunteers some of whom go to extraordinary lengths to raise money for the Appeal (you know who you are!) and without whom it would just not be possible. Thank you.



*Becks Pearson*

## FRIENDS OF THE CHURCH LOTTERY

As it is Christmas there were two winners this month instead of one so £25 each has gone to Linda Carroll and to John Whiter.

*Clive Wilson*

## LYMPSTONE W.I.

Our speaker on 8th January was Mrs Roma Patten talking about “Associated Country Women of the World (ACWW)”. The W.I. is a member society of ACWW, an NGO which works in partnership with its members, offering mutual support, friendship and practical help to women and communities around the world. ACWW has over 460 member societies active in over 70 countries, with a “voice” on the UN. ACWW also funds small scale local development projects which are requested by local women to suit their needs. The current Devon W.I. Federation Project is in Ghana “To recruit 40 practising but untrained birth attendants in 20 villages in basic midwifery and safe child birth”. A visit arranged to the Met Office on Saturday, 1st February at 1.00 p.m. (need to take I.D.) “Winter Warmers” lunch at Sailing Club on Tuesday, 25th February.

Visit to Quicke's Dairy followed by (Social section) or phone Diana de la  
pub lunch on Tuesday, 25th March (not Rue on 01395 274099.  
26th as in previous report).

Following lively discussion, members  
voted for the Resolution "Campaign  
against female genital mutilation" to be  
selected for the National W.I. 2014  
campaign. Our next meeting "Local  
Ladies, Local Lives" (a pot pourri by  
members) is on Wednesday, 5th  
February, at 2.30 p.m. in the  
Committee Room of the Village Hall.  
Further information is on our dedicated  
website link on [www.lympstone.org](http://www.lympstone.org)

*Heather Stratford*

## **DISCLAIMER**

This news letter is compiled from  
emails sent to the editor by numerous  
people and very little of the information  
is checked before publishing which is  
done in good faith!

*Chris Carter, Editor*

---

## **HAPPY NEW YEAR!!**

**From Ange, Mike, & all the Team @**

**THE GLOBE INN**



---

**THE STRAND, LYMPSTONE**

**T: 01395 263166**

**.We are pleased to announce that we have recruited Luke previously  
of The Redwing as our head chef.**

**We are delighted to have Luke on board & are looking forward to his  
fabulous new menu!**

2014 promises to be a tremendous year here at The Globe Inn, we have  
many exciting idea's in the pipeline & the return of some old favourites  
too, so please pop in & see us, or keep an eye out for our posters &  
monthly Lympstone Herald advert.

**Eddie Mingo  
Plumbing and Heating**

Gas safe 222910

01395 267823

07762419255

**email**

**eddiemingo@btinternet.com**

**EXE-GAS**



Plumbing & Heating

Boiler breakdown & service

New installations

Fires & cookers fitted & serviced

LPG systems

Plumbing

Home. 01392 877345

Mobile. 0787 1621157

**SPECIAL INTRODUCTORY  
OFFER!**

**FULL BOILER SERVICE - £50**

Chris Cheverst

**M&Bility**

01395 200 882

79 Exeter Road  
Exmouth. EX8 1QD



**Treat yourself to Pilates**

**Before school pick up time  
Lympstone Methodist Chapel**

Mondays: 2.15 - 3.15pm

**Or after work**

**Exton Village Hall**

Thursdays: 6 - 7pm

Beginner / Intermediate

**Pre-booking is essential**

Email: [abbie@pilates-sessions.co.uk](mailto:abbie@pilates-sessions.co.uk)

Pilates focuses on good movement  
and posture. You will tone up and  
improve your flexibility.

Trained with **Body Control Pilates** and  
The Register of Exercise Professionals.

Smaller classes, tailored to you.

Price per class: £8.50

(booked in blocks of 5/6 weeks)

**[www.pilates-sessions.co.uk](http://www.pilates-sessions.co.uk)**

**07870 862139**

**LUSH HAIR STUDIO** Our opening  
times are Tuesday to Friday 9 to 5 and  
Saturday 9 to 4. Walk Ins welcome. For  
an appointment call 01395 274089

Open the door  
to your property's  
potential...



The Wilkinson Grant & Co Open House campaign is proving a great success, with many properties attracting more than 20 viewings in just 90 minutes and in some cases multiple bids on the same property. If you are interested in selling, contact us now for more details.

**Call 01392 875000**

[www.wilkinsongrant.co.uk](http://www.wilkinsongrant.co.uk)



# Rob Hilton Architecture

Your Local Architect



**We offer a personal, creative and professional design service for your project.**

- Design expertise
- Planning applications
- Building Regulations documentation
- Detailed drawings
- Construction co-ordination

Call for a **free initial consultation:**

**01395 224 829**

**www.robhilton.co.uk**



## **DOG GROOMING**

Kind & Qualified Groomer.

Commissions for PET



### **PORTRAITS**

in pastel also undertaken.

Make Superb Presents.

(Examples of work can be viewed).

Tracey Crompton, Greenways,

Courtlands Lane, Lymestone.

Tel: 01395 272815 /07973 986 268.

## **IAN L MOIR**

### **PROPERTY MAINTENANCE**

Painting, decorating, pressure washing, window and gutter cleaning, fencing, decking and much more. All jobs to keep your property in tip top condition. I am Lymestone based and offer free no obligation quotes.

Contact Ian on (home) 01395 263 716  
Mobile 07702 804537

**LUSH HAIR STUDIO** Our opening times are Tuesday to Friday 9 to 5 and Saturday 9 to 4. Walk Ins welcome. For an appointment call 01395 274089

### **PROPERTY MAINTENANCE –**

James Waddell Interior & Exterior, Carpentry, Flooring, Fencing & Gates, Plumbing, Decking, Bathrooms & Kitchens, General Repairs. Free advice & Estimates. 01395 263496

### **SIMON QUICK THE LOG MAN**

For all your coal, kindling & gas supplies - Tel 01395 267490

### **CARNIVAL HOUSE FANCY**

**DRESS** 5 Exeter Rd, Exmouth EX8 1PN Phone 01395 224664

**ENGLISH TUITION:** Experienced English Tutor available to teach English, Literature, Essay Writing and Study Skills at GCSE level and beyond. Tel: Sharon Wayland on 274551.

**PRISTINE CLEAN** - Domestic ironing and cleaning services. Local lady. Call Niki - 01395 740727

### **FOOT HEALTH PRACTITIONER -**

Lindsey Waddell MAFHP. Nail Cutting and Treatment of Corns, Callus and Verrucas. Home Visits. 01395 263496

60p a line for an advert just here



## CLOCK REPAIRS

Terence C. Matthews - Horologist  
Westminster Chimes  
Wall Clocks  
Grandfather / Grandmother Clocks  
Dial Clocks



Case Clocks  
Antique Clocks

Free estimates and house visits  
01395 273563

Find some winter sunshine!

**Comfy casa near the Costa Blanca, Spain**

Peaceful, two-bedroomed home. Roof terrace, gorgeous views, communal pool and tennis. Beaches, cycling, golf, hiking and more. Suits all ages. Flights from Exeter & Bristol

Lympstone residents 15% discount  
Tel: 07986 607610  
[www.algorfaholiday.com](http://www.algorfaholiday.com)

## FOOD WITH FLAIR CATERING

Small and Large Events -  
Menus to Suit your Budget  
Telephone Shirley or Michael  
on 265147 or see our Website  
[www.foodwithflair.co.uk](http://www.foodwithflair.co.uk)

## ELECTRICIAN

Specialising in domestic work;  
happy to do small jobs.

Call Simon on: 07985 963075

**COMPUTER  
REPAIRS**

**ELECTRO  
COMPUTERS**

**NO FIX - NO FEE**

**01395 548151 / 07944 051987**



**Peter J Acca**

Carpenter/Joiner  
Specialist PVCu  
Window Repairs  
Replacement double glazed sealed units  
01395 489791  
07801365097  
Let me make your old windows like new

# LANDLORDS WANTED!

We are the only Lymestone registered property management experts and are looking for more properties in the area to meet demand.



**EATON-TERRY CLARK**  
PROPERTY MANAGEMENT

HELPING TO MANAGE YOUR PROPERTY MORE EFFICIENTLY

HOLIDAY LETS

RESIDENTIAL LETS

BLOCK MANAGEMENT

Tel: 01395 269955 Email: [info@etcpm.com](mailto:info@etcpm.com)

**[www.etcpm.com](http://www.etcpm.com)**

Members of ARLA and ARMA



## DustAway



All Work and no play, we are here to help

Friendly Efficient Cleaning Service

Lymestone Based

Weekly, fortnightly, monthly

One off cleans ie moving house, holiday lets,

End of tenancy cleans, just redecorated or a spring clean

We also offer an ironing service

All materials supplied. Fully insured

Please call **Tracey 07727168817** or **Jill 07818484864**

**[www.dustaway-cleaning.co.uk](http://www.dustaway-cleaning.co.uk)**

## SMALL ADS

---

**EXE SALMON FRESH OR SMOKED** Reasonable prices 07593 697469 [chadfish@hotmail.co.uk](mailto:chadfish@hotmail.co.uk)

### **LYMPSTONE GREETING CARDS AND POSTCARDS**

Scenic photographs of your village - from the harbour, boats and washing-lines.....to sunsets and Lympstone Life! Available from Post Office or Frances Longhurst 263495

**PREGNANT?** Experience the magic of birth: release fear and tension, remain conscious, deeply relaxed, in control. Hypnobirthing antenatal classes: for more info phone 01392 412767 or see [libbyclaphamhypnotherapy.co.uk](http://libbyclaphamhypnotherapy.co.uk)

**PICTURE FRAMING.** For all your framing requirements; also frame restoration & chair caning. Caro Ambridge 01392 877460, Topsham.

### **DAWN 'TIL DUSK**

Creative Gardening service Routine maintenance, Designs & Creates. 0786 6566 883 [dawnc@live.co.uk](mailto:dawnc@live.co.uk)

### **SIMON QUICK THE LOG MAN**

For all your log, coal, kindling & gas supplies Tel 01395 267490

**PIANO with a VIEW** Lessons for all ages, beginners and improvers, "purely for pleasure" and ABRSM exams to Grade 8. Theory to Grade 5. Tel: Judy Joss (BA Mus, Dip Ed) on 222749

**MATHS TUITION** Experienced tutor available to teach primary to GCSE level maths. Reasonable rates Tel: Jane Moffatt on 279952

**SCIENCE TUTOR** Qualified teacher available for GCSE and A level science tuition. Karen on 07807474183 or email [karentrice36@yahoo.com](mailto:karentrice36@yahoo.com)

### **ACCOMMODATION**

**WITHALL'S HOUSE BED AND BREAKFAST.** A modern and spacious home close to the heart of the village. Ample parking and flexible accommodation. Call Pete and Jan Hardy on 01395 270157 Or visit [www.lympstonebedandbreakfast.co.uk](http://www.lympstonebedandbreakfast.co.uk)

Advertise here for just 60p a line

## WHAT'S ON

### JANUARY

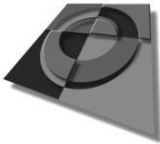
- 10** Senior Youth Club starts
- 10** A Late Quartet
- 12** Taize chants
- 14** Tear fund talk
- 17** Mobile Library
- 17** Live music, The A38's @The Globe
- 18** The Making of Macbeth
- 21** Talk-Walronds Preservation Trust
- 22** Art Workshop
- 24** Live music, EatThe Rich@The Globe
- 25** Letter writing under bridge
- 29** Deadline for petition letters
- 31** Mobile Library
- 31** Long Meadow Rd closure

### FEBRUARY

- 1** Six nations @The Globe
- 5** WI
- 5** Talk- Gardens of A la Ronde
- 6** Talk -Devon Place Names
- 7** Live music, Peaceful Hooligan @The Globe
- 8** Village Concert
- 12** Pastels Workshop

### MARCH

- 9 – 15** Guided prayer
- 15** Hospiscare-Mens Walk
- 26** Talk Devon Gardens



## Optima Graphics

Topsham Ltd

silk screen, digital & litho printers

*We provide a high quality, good value  
and prompt printing service.*

#### Silk Screen

Vinyl Stickers  
Estate Agent Boards  
Printing on:  
Metal, Acrylic,  
Plastic, Wood

#### Large Format Digital

Banners  
Display Panels  
Window Graphics  
Pull-up Display Stands  
Magnetic Vehicle signs

#### Litho

Brochures & Leaflets  
Stationery  
Labels & Invitations  
Pads  
NCR sets

**T: 01392 873822**

**E: [sales@optimagraphics.co.uk](mailto:sales@optimagraphics.co.uk) W: [www.optimagraphics.co.uk](http://www.optimagraphics.co.uk)**

20b High Street, Topsham, Exeter, Devon EX3 0EA