



ITEMS OF NOTE from the Parish Council May Meeting

Parish Council Team

Councillors Rob Longhurst and Pete Acca were unanimously re-elected as Chairman and Vice Chairman for the next year. Several Councillors commented on the strong leadership that had been shown on major issues affecting the Parish over the last 12 months.

Exe Estuary Cycle/Walkway

The second section in the village is due to open on 29th May 2010. The Parish Council has welcomed this but is still demanding more public safety measures on the section from Sowden Lane to Station Hill. There are great fears that the new ramp on Station Hill will be a great danger as there are no measures to slow down cyclists or skaters.

Courtlands Development

The application will be considered by EDDC at 2pm on the 1st June 2010. The

meeting is open to the public and there is room for 120 in the Public Gallery.

The Courtlands Action Group will be organising three speakers for this but the Group would welcome as many supporters as possible. Parking is very restricted at Knowle, so if you can offer a lift or would like to share transport, please contact Councillor Rob Longhurst on 263495 or email CllrRobLonghurst@aol.com.

Flooding in the Parish

On 5th June 2010, between 10am and 4pm, there will be an exhibition in the Methodist Hall about the last Great Flood in the Village, which was 50 years ago. This will be coupled with details of local measures to help ease flooding now and in the future. Many houses are affected and the exhibition will show interesting perspectives of the village 50 years ago.

Clerk to the Council: A J Le Riche, DMS,
43 Salisbury Road, Exmouth, EX8 1SL, Tel
279665/ 07866 535580
lympstonepc@leriche6.wanadoo.co.uk

Editor: Chris Carter, Hillcrest, Greenhill Ave, Tel 274104. Copy editor – P Acca

Deputy Editor - Jan Teague, Advertising - Liz Griffiths

Distribution: Jill Newton, Two Jays, Burgmann's Hill Tel 263809

Herald archive and Lymstone web site – www.lympstone.org

Copy deadline for advertising for the next issue – Tuesday June 8th– 10 am

Copy by e-mail, if possible, to chriscarterathome@hotmail.com or to

The Editor at Hillcrest, Greenhill Ave, Lymstone EX8 5HW

THE EDITOR

COURTLANDS DEVELOPMENTS

150 people attended a public meeting in and around the Village Hall in April and voted unanimously to oppose the development of land at Courtlands. More than 628 (as at 11/5/10 by EDDC count) people followed this up (spurred on I imagine by leaflets, posters and street meetings) to write or email to East Devon District Council in protest. Well done everyone. www.lympstone.org contains a sample of their protest letters some dating from early April.

AFFORDABLE, NOT SOCIAL, HOUSING

During recent street discussions on the value of “low cost” housing many conflicting definitions were suggested. Below is the definition suggested by a previous Chairman of our Parish Council. Please note that “low cost” in our village has recently meant £200,000 houses.

“...there is an enormous difference between ‘affordable housing’ and ‘social housing’. The former refers to a number of methods of providing homes for sale or rent at lower than market value. It is possible to place restrictive covenants on such properties and the local community has the chance to say to whom the homes should be made available. Social housing is the term used for the provision of homes for those who would otherwise be homeless. Although, obviously this includes local families who may be homeless through no fault of their own, the requirement can be for any person

who ends up potentially homeless in our area (eg by) having been evicted previously for anti-social behaviour or bad debt. The local authority has no ability to assess and prioritise homeless applicants – they have to be offered a roof over their heads.”

ANNUAL PARISH MEETING

Although there were about 20 people at this meeting, only ten of them were members of the public – the remainder being 5 Parish Councillors or, like the Police, called in to give an annual report.

VOLUNTEER NEEDED

We urgently need someone to lock the car park toilets each day. If you feel that you could manage this undemanding but essential job then please give Tony le Riche the Parish Clerk (details on first page) a ring.

ALLOTMENTS SHEDS BROKEN INTO - 7/5/10

Hasps and locks on many of the sheds on the allotments were broken into early this month. Nothing, except perhaps fuel, was stolen. The police did attend the scene of the crime.

EXCUSES

For the first time in about a decade I have gone on holiday leaving somebody else to look after the Herald and my web site. The fact that you are reading this means that Jan and Liz have successfully got them out. Well done!

Chris Carter, Ed Lympstone Herald

COURTLANDS

On the 19th April a Village Meeting was held in Lymptone Village Hall to discuss the Outline Planning Application that had been registered by Strategic Land Partnership with EDDC.

The outcome of the meeting was a unanimous vote to reject the application. I concluded that meeting by urging the parish community to make their views known to EDDC by letter or e-mail. With hope, more than expectation, I issued a challenge to the parish to raise 500 objections with EDDC. Your response can only be described as “outstanding and magnificent” – 651 objectors as at close of business 7th May 2010. This is a result that unequivocally demonstrates to our officials the strength of feeling in Lymptone against this development. Additionally I might add this number also included objectors from Exmouth, Budleigh and Sidmouth and also a little further afield – Japan, New Zealand and South Africa to name a few.

To one and all that contributed a very big “thank you” – and especially the children – after all the long term effects of this development will not be manifest in our lifetimes – this is about the lifestyle and environment of our children and our children’s children – we are merely holding tenure to this parish in the passage of time – let’s leave Lymptone to our children as we found it.

Thank you

*Rob Longhurst
Chairman Lymptone Parish Council
Chairman Courtlands/Lymptone Action
Group*

WI

Our meeting started with Anne Frampton (President) reading this year's Resolution to be put forward at the Annual WI Meeting in Cardiff next month: "This meeting urges HM Government to introduce clear and mandatory country of origin labelling on all meat, poultry and fish products sold in this country". There is an incentive for UK retailers to pass off foreign meat as British. British meat tends to be more expensive because of the UK's higher animal welfare standards. This makes it difficult for British farmers to compete on price alone and they have to promote other incentives, such as quality, for consumers to buy British. This requires accurate labelling. At the moment, the "country of origin" is the country where the last significant change (of state, i.e. made into pies, processed meats etc.) took place.

The WI Drama Group then entertained us with two delightful short sketches, the introduction to them having been written in verse by Drama Group leader, Jill Hearn. The first was about three WI women who took shelter from the rain in a cafe only to find they were, in fact, all married to the same long distance lorry driver! The second depicted two Northern couples who managed to fall out over the ordering of grapefruit for breakfast!

Diana de la Rue reported on the excellent Spring Council meeting at Torquay where the guest speaker was Lesley Garrett. It was a day that lived up to the new WI Logo "Inspiring Women". The Treasurer (Diana Winterforde-Young) was pleased to say we had been able to send £73 from our "Coins for Friendship" box for the Associated Country Women of the World's project in India.

Diary dates:

Mon. 17th May - Footpath clearing 2.30pm followed by tea at Shear's cafe

Tues. 18th May - Coach trip to Shelterbox at Helston, leaving The Saddlers at 9.30am.

Mon. 24th May - Drama Group Rehearsal

Wed. 26th May - Committee Meeting at 9 Highcliffe Close

The next meeting is on Wed. 2nd June at 2.30pm in the Village Hall when Mr Whitton, FRICS, will speak on antiques.

Diana de la Rue

EXMOUTH & DISTRICT COMMUNITY TRANSPORT GROUP



EDCTG is a local registered charity founded in 1990, to provide transport services for those members of the community who are unable to access public transport. These include the elderly, disabled (short or long term), lone parents or persons with limited means, living in rural or isolated areas around Exmouth including the parishes of LYMPSTONE, Exton, Clyst St Mary, Woodbury, Woodbury Salterton, Budleigh Salterton, East Budleigh, Colaton Raleigh, Newton Poppleford Otterton and Clyst.St.George and Yettington. Sadly, many people feel they are not eligible to use our service and are struggling to carry heavy shopping, walk to and from a bus stop or have difficulty accessing public transport. To counter these problems we offer a door-to-door service on both our buses which are equipped with tail lifts for those passengers unable to use the steps or who travel in wheelchairs; thereby giving those who would be totally housebound, the

opportunity to get out to places and access services which would otherwise be unavailable.

The Ring and Ride and Community Buses provide daily timetabled services offering a variety of journeys. These include shopping trips to Exmouth, a trip to the local Tesco's and Wednesday excursions to Exeter, Newton Abbot or Sidmouth. Regular passengers can also take advantage of our other trips and outings. Both our buses are available for private hire in the evenings and at weekends by eligible user groups such as Exmouth Disabled Fellowship youth groups and organisations which include people with mobility problems.

For further information regarding the above services please ring – 01395 26 66 62 Mon-Fri 10.00 am – 12 noon & 1.00 pm – 3.00 pm.

Wendy Passmore

LOVE GARDENS, LOVE FLOWERS...

Then please come along to this year's popular 'Hospiscare in Bloom' event.

Lympstone ladies Julia Russell of Lympstone Nurseries, together with Sheila, are taking part - as well as Sheila Parker 'Creating a Garden'. Stallholders include Jennie Moxom, Lympstone Woodcraft and Naomi Lawrence. Held in The Marquee, Exmouth Rugby Club, from 6.30pm on Wednesday, 19th May, in aid of Exmouth & Lympstone Hospiscare. Tickets only £5 - available from Lympstone Nurseries and Frances Longhurst 263495.



Francis Longhurst

CLAREFEST

'Clarefest 2010' will take place this year on Sunday June 20th between 2pm and 7pm at West Wing, Varnes, Church Rd, opposite the Redwing. A £6 donation on the door will bring 5 hours of fun, live music and fund-raising for FORCE, Macmillan and Hospiscare (SW).



Nick Millington

ST PETROCK'S

Gill Luckings who gave an excellent talk about the work of St Petrock's for the Homeless wishes to thank everyone who came to hear her and for the cheque donation of £302 raised from the Lent Lunches and the donation of £81.43 collected after her talk. Lympstone's generous support is invaluable and most gratefully appreciated.

Mary Truell

SHOP SUPPORTERS CLUB



The Lympstone Shops Supporters Club have reached provisional agreement with Mary and Ken at LONDIS that should enable us to repay all loan members monies in full with interest during the summer.

Ken and Mary and ourselves felt the time was right to repay the loan now that LONDIS is firmly on its feet.

At our forthcoming AGM on 8th June we will be covering the usual business of the last financial year and some additional business brought about by the early repayment which amounts to approximately twenty one thousand pounds in £50 units

which we owe to our members. There are also some changes which we need to make to our constitution. We also want to hear members' views regarding the future of the club and the disposal of any surpluses. Then in October once the repayments are completed and other liabilities have been discharged, there will be a further meeting - an EGM, to vote on the future of the club, disposal of unused reserves, etc.

Do join us at the AGM in June to help shape this policy and to ask any questions that you have about early repayment

Alan Burton

FRIENDS OF LYMPSTONE PARISH CHURCH

The winner of the April Church Lottery was Mary Strouts of Burgmann's Hill with ticket No. 269.

Joyce Malster

LALA NEEDS MEN!

LaLa Lympstone, the village's very own choir, is always keen to attract new voices. At the moment we are in real need of men to sing in our bass section. If you would like to join, come along - you'll be very welcome. We meet on Mondays, 7-9pm in the Methodist Church. For more details phone Sam on 276708 or Sally on 263912. LaLa Lympstone will be performing in the village during the summer, including in our own Concert in July. We will be singing a wide range of songs, and all proceeds from this event will go to Children's Hospice Southwest. Look out for details nearer the time.

Sally Burton

LYMPSTONE ENTERTAINMENTS

By the time you read this our season will have ended with the concert given by our old friends the Clarion Clarinet Quartet. That's not to say that you won't see us out and about in the summer; indeed by now the first of our Poster Poems are on display at strategic points around the village. Harland Walshaw, whose project this is, is eager to receive your suggestions for verses to join this outdoor anthology: they need to fit on an A4 page and should ideally have some seasonal or other topical relevance. Email your candidates for display to harlandwalshaw@aol.co.uk or put them through his letterbox at Holly Cottage, Church Road.

Our new season will start in September with a programme that should offer something for everyone.

John Eaton-Terry

SCRABBLE TOURNAMENT

My sincere thanks to all who helped make the recent event a success: that includes furniture movers, soup cooks, prize givers and, above all, the four dozen players. Several people said they'd welcome a regular Scrabble session in Lympstone; others seemed eager for the tournament to become a regular event. So all that's needed is for one of these enthusiasts to pick up the baton and run with it; based on my experience they won't lack support.

And the winner, apart from the Village Hall Renovation Fund which will have netted £500 or thereabouts, was Becks Pearson with both a splendid aggregate score and the highest individual one-word score. She went home with the small but beautifully crafted trophy, a Scrabble dictionary (as if

she needed one) and a bottle of bubbly - and all this on her birthday!

John Eaton-Terry

FURRY DANCE ANNUAL CREAM TEA

For a special Father's Day treat this year bring your dad and granddad, and the rest of the family too, along to a really good traditional cream tea.

Blue skies, sunshine, stunning estuary views and songs from LaLa Lympstone will provide an enjoyable afternoon at the Furry Dance Cream Tea on Sunday 20th June from 2.30pm till 4.30pm.

This year we will be raising money for the Village Hall Fund, so please come along and relax in Graham Wills' lovely garden at Four Winds, Sowden Lane. We look forward to seeing you.

Bridget Beer

FLOWERS FOR SOMEONE?

We have flowers in the Church all year round except during Lent and Advent. If you would like to

donate an arrangement to mark a special occasion: a Birthday, a Wedding Anniversary or in memory of someone please contact:

Mary Strouts Tel.272208

Or Winifred Martin Tel. 270167



ART GROUP

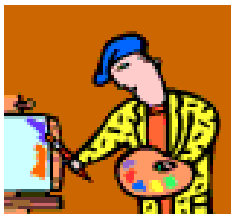
Lympstone Art Group will be holding an “Art Exhibition” Sunday 30th May – Sunday 6th June. 10am – 5pm, admission 75p adults, children free. The venue is the Function Room, Village Hall, Lympstone. This year for the first time there will be cards and prints for sale. This is a new venture for the Art Group which will complement the main Exhibition pictures and the mounted portfolios. With so much to view, the exhibition will be an artistic river of fluid colour winding its way through different mediums leaving the viewer becalmed in a state of visual pleasure. We very much look forward to seeing you at our “Art Exhibition”.

Chris Norris

SUMMER ELLINGTONIA

Café style Concert, Saturday 5th June at 8.30pm in the Village Hall, doors open at 6.45pm. Bring your own food and drink. Tickets £14 each, (part tables of 4+ or full tables of 10 bookable). Telephone now to avoid disappointment - 274485. Ellingtonia will be making a donation to the Village Hall refurbishment project from the takings. There will be a grand draw during the interval to raise funds for this as well.

Graham Martin



BRING OUT YOUR BEAST

Back by popular demand Lesley's fun themed quiz and supper night in aid of Exeter, Mid- and East Devon Hospiscare. Thursday 13th May, 7.15 for 7.30pm at Lympstone Village Hall. Supper of bangers, mash and beans, I will try to accommodate your dietary requirements please let me know your needs when you book your tickets. There will be spot prizes throughout the evening, a licensed bar and loads of fun, all for £10 per person, 4- 6 per team. What is the theme...the clue is in the heading!! Telephone 01395 275058 for tickets, book early to avoid disappointment. See you there.

Lesley Weeks

NEW WASTE COLLECTION ARRANGEMENTS

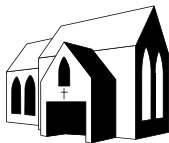
The collection of household waste from Lympstone by EDDC will be changing in November. Find out more and meet the East Devon Waste Management Team who will be giving a presentation arranged by Green Umbrella on Weds 2nd June 7.30pm Methodist Hall. Come along to find out how you will be affected and get your questions answered. Free admission so come if you can.



J Dingle.

(We all ought to attend this as it will change how the whole village looks! Ed.)

PARISH CHURCH



The Annual Parish Meeting took place in the church towards the end of April. John Lupton was thanked, and given a small presentation, for his seven years as warden. Normally a church warden cannot stay in office longer than six years. However, last year the circumstances were rather unusual. First was the organisation of the change created by the resignation of our Rector, Father John Clapham, to welcoming our priest-in-charge Father Ian Morter. Secondly the celebrations for the tower's 600th anniversary. What a year it was and John agreeing to stay on an extra year was a relief to the congregation. This year he really had to go and his replacement is Andrew Hubbard who was elected with Mary Blair who continues for a second year.

The meeting then received a number of reports on church activities and elected Richard Giles and Jim Bailey as new members of the Parochial Church Council. After the meeting Father Ian announced that the informal part of the evening would continue in the Redwing. It has been noted how Ian attends many village events and how he manages to come to them and all his Holy Trinity Exmouth work no-one knows.

We look forward to the re-ordering of the rear of the church delayed from last summer. It was further held up by the increasing number of weddings in church. The law has changed allowing more choice in church as a venue for a wedding and, it appears, our church is an attractive, photogenic one. We thought that the inside viewed as a building site was not a good idea so the re-ordering will not take place until following the last wedding of the

'season.' We plan to forge ahead with changes to the East of the church and install a new raised dais and sound system with screen and projector for service information in less formal services. All subject to approval by the church community.

All other events and services are listed on the notice boards under the railway arch and in the church porch. Some details are being updated as a result of the Annual Meeting and other changes. One change is the Wednesday communion service which has moved from 8 am to 11 am.

You may have seen posters in the village for a new, informal service on the general lines of our 4 pm service which took place at Holy Trinity with the Lymptone worship band augmented by others from Holy Trinity and Littleham. This 7 pm service will continue once a month and, judging by the large congregation on the 2nd May it could prove very popular. The next is 6th June at Holy Trinity church, Exmouth with our 4pm service on the 16th May

Brian Mather

EXCITING DANCE CLASS NOTICE FOR UNDER 18s Sponsored by The Lymptone Players

Lizzie Tolson, who choreographed Jack in the Beanstalk so brilliantly, will be teaching a variety of routines (street dance, jazz/showtunes and disco) for a 6 – 8 week period commencing 9th June. These sessions will be held in the Village Hall Function Room from 6 – 7.00 pm. No charge but admission by ticket only to be obtained from Shirley Wilkes 01395 265147 or Shirley@foodwithflair.co.uk.

Shirley Wilkes

CHARITY CLIMB

In October of this year, I will be climbing Mount Kilimanjaro (at over 5800m high, it's the tallest mountain in Africa). I will be raising money, via sponsorship, to help pay for the modernisation of Lympstone's Village Hall. Shortly, I, along with other volunteers, will be collecting sponsorship money from around the village. I have purchased the flight and ticket myself, and 100% of all donations will go directly to the Village Hall fund (for the good of all people who use the hall in the future). The hall has played a key part in my life: 5 years of school dinners; a broken arm (at a children's party), 2 appearances on stage and my Wedding Reception evening party (amongst many other events). It is an important asset to the village and I would ask that you generously support this worthy cause. Thanks in advance for your sponsorship,

Nick Millington

OPEN GARDEN FOR ALL TO ENJOY

As part of its effort to help raise funds for the Village Hall, on Sunday 13th June the Garden Club is hosting an open garden event in a very special garden. The Old Garden on Burgmann's Hill has been open in the past as part of the National Gardens Scheme. It features a series of "rooms" which offer varied interest to the visitor and its fine display of roses should be very much in evidence. There will also be plant and produce stalls, as well as delicious cream and strawberry teas. Gates open at 2pm and last entry is at 5pm. Tickets will be £3 on the day, £2.50 in advance from Lympstone Post Office. Our grateful thanks go to Mr. and Mrs. Pankhurst for kindly

offering their beautiful garden for our enjoyment - while also raising funds for the Village Hall.

Viv Day

TENNIS CLUB DISCO

If you haven't got your tickets yet for the Tennis Club's Caribbean Cruise Disco night on Saturday 22nd May, hurry along to the Post Office without delay, or phone Ron on 263954. Tickets are selling fast, so don't miss out on a great night, which includes a delicious two-course supper. Beach wear or boat wear is encouraged, with a prize for the best dressed male and female. Help with decorating the hall in the morning from 10am, or making salads in the afternoon from 2pm is most welcome.

Jill Dixon

DVD SALES OF LOCAL EVENTS

DVDs continue to be on sale at Shear's Place. Prices - The Pantomime at £5, The Village Concert at £4, The 600 Celebrations at £4. One or two '600' DVDs have a problem with the 'Tower Tour' and the image 'freezes' for a couple of minutes before playing on. I am sorry if this has caused any inconvenience. I will re-record the DVDs and make them available to replace anyone's problem disc. It is not a huge number and over £50 has been raised for the Village Hall.

If you have this fault please phone 278594 and tell me your name and address and I will replace the disc ASAP. There is an answer phone if you wait long enough!

Brian Mather - Film Society

POLICE REPORT

KE/10/854 Non crime relating to a vulnerable adult in Lympstone.

KE/10/991 and KE/10/992 Between 2230 and 2315 on 3rd May, Police attended an alleged assault which was the result of a domestic incident.

Possession of Drugs Class B; Possession of Imitation Firearm

KE/10/914 and KE/10/915. At approximately 0745 on 26th April an adult

male was apprehended in Nutwell Road following reports of a suspicious male seen in the area of the marine camp. Ongoing investigations continue into the possession of particular items and the male is currently awaiting a charging decision.

Donna Baker

LYMPSTONE HISTORY SOCIETY

Day Visit to Honiton - Tuesday 15 June 2010

Visit to Thelma Hulbert Gallery , Guided tour of Allhallows Museum

Guided town walk

Tickets £5.00 Please contact Robert Golding on 01395 279909
or email pinhoe67@btinternet.com for further details.

Advertisement

FOR SALE

**Traditional French House
In a
Pretty Village
Near
Chalais, Charente, South West France.**

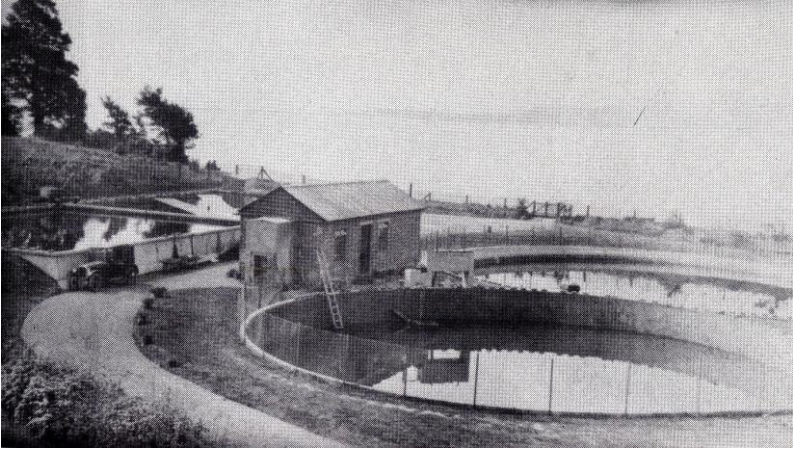
119,000Euro

**For more information see website
www.buyahouseinfrance.co.uk**

**Email
mamaison@buyahouseinfrance.co.uk**

Or telephone 01395275007

LYMPSTONE GARDEN OPEN FOR CHARITY



THE OLD MUSSEL FARM, SOWDEN END, 1920

On the 18th & 20th of June Will and Jackie Michelmore are opening their garden at The Lookout, Sowden Lane, Lymptstone for the third time as part of the National Garden Scheme. This scheme raises millions annually for caring charities including Macmillan & Marie Curie.

Over 1,500 people have visited the garden during its four openings, helping to raise almost £6,500, benefiting the NGS charities, Lymptstone Scouts and tetraplegic charity REGAIN. Jackie and Will hope to raise a good amount for the Village Hall Fund this year.

Featured on BBC and ITV gardening programmes and in the local press, this two acre, wildlife friendly, estuary-side garden has been lovingly created over the last seven years out of the derelict 1920s-built mussel purification station site by its garden designer owner .

Beachcombing finds compliment the relaxed naturalistic style seaside planting designed to harmonise the garden with its

coast and countryside surroundings. A short circular walk leads you from an area of jungly planting through a wild flower meadow, past a pond, through a copse and along the river bank to a Mediterranean courtyard, with numerous places to stop and take in the views and salty air.

Refreshments and plants will be on sale. There will also be a photographic display showing how the site has evolved from the 1920s to the present day.

There are some narrow gravel paths, steep slopes and steps, so not suitable for the disabled. Stout footwear is recommended! Adults £3, children free but must be closely supervised at all times. No car parking on site but in adjacent field if weather permits. Sorry no dogs.

Open 2–5pm on Friday 18th & 2-6pm on Sunday 20th June.

Further details on www.ngs.org.uk

Jackie Michelmore