

THE LYPSTONE HERALD

May 2011

Volume 34, Number 9

50p
where
sold



2011 – 2015 COUNCILORS

Cllr P Acca	Beulah, 8 Grange Close, Lymstone, EX8 5LD	279209
Cllr D Atkins	Potters, Exmouth Road, Lymstone, EX8 5A	264003
Cllr W Bailey	Cobley, 8 Seafield Avenue, Exmouth 07729 497247	278241
Cllr Mrs D Beatty	10 Greenhill Avenue, Lymstone, EX8 5HW	276044
Cllr C Carter	Hillcrest, Greenhill Avenue, Lymstone, EX8 5HW	274104
Cllr R Eastley	Little Paddocks, Underhill Crescent, Lymstone EX8 5JF	266165
Cllr R Longhurst	Redcliff, Burgmann's Hill, Lymstone, EX8 5HP	263495
Cllr David Young	Chestnut Ridge, Marley Drive, Hulham Road, Lymstone	
	District Councillors	
Cllr B Ingham	Ferndale, Church Road, Lymstone	07708 352389
Cllr D Atkins	Potters, Exmouth Road, Lymstone, EX8 5A	264003
	County Council	
Cllr B Hughes	170 Exeter Road, Exmouth	272580

Editor: Chris Carter, Hillcrest, Greenhill Ave, Tel 274104. Copy editor – P Acca

Deputy Editor - Jan Teague, Advertising - Liz Griffiths

Herald archive and Lymstone web site – www.lympstone.org

Copy deadline for advertising for the next issue – Tues June 7th, 10 am

Copy by e-mail, if possible, to chriscarterathome@hotmail.com or to

The Editor at Hillcrest, Greenhill Ave, Lymstone EX8 5HW

Distribution by The Telfers Tel 272275 and others

DRAFT RECEIPTS AND PAYMENTS ACCOUNT 2010 - 11

<u>2009 - 10</u>	<u>Receipts</u>	<u>2010 - 11</u>
25,900.00	Precept	30,040.00
1,652.00	Burial Fees	1,334.00
500.00	DCC re maintenance of Candy's Field	400.00
*	Lympstone FC re Candy's Field	70.00
3,786.50	Herald Adverts	4,444.20
1,898.03	Miscellaneous	80.21
5,050.00	Big Lottery Fund grant - Communications	0.00
0.00	Youth Club	330.00
	NT re The Avenue	4,000.00
<u>0.00</u>	Western Power wayleave fee	<u>6.38</u>
38,786.53	Sub total	40,704.79
	Recoverables received	
2,640.55	VAT reclaimed	3,963.73
<u>0.00</u>	Youth Club reclaimed	<u>2,065.13</u>
2,640.55	Sub total recoverables	6,028.86
<u>41,427.08</u>	<u>Total Receipts</u>	<u>46,733.65</u>
<u>2009 - 10</u>	<u>Payments</u>	<u>2010 - 11</u>
3,145.79	s137 and other Grants	3,161.34
10,268.90	Administration	9,921.11
1,821.69	Councillors	697.00
2,433.00	Insurance, Audit, Elections	1831.67
80.00	Herald Printing	2,913.00
3,965.77	Affordable Housing	0.00
7,600.00	Amenities	4,643.20
	Candy's Field lighting	0.00
3,916.91	Toilets	4,494.36
187.50	Burial Ground	257.28
	Communications	0.00
309.22	Planning	166.41
1,702.02	Building Maintenance	77.00
518.31	Youth Club utilities	2,182.11
	Environment	<u>0.00</u>

35,949.11	Total Payments per budget	30,344.48
2,399.64	Other projects - Village Hall roof	20,000.00
	Website etc	5,190.47
	Sub total Others	25,190.47
	Sub total payments	55,534.95
	Recoverables paid	
2,698.31	VAT(part to be reclaimed)	4,661.32
2,047.02	Youth Club to be reclaimed	<u>1,251.90</u>
4,745.33	Sub total	5,913.22
40,694.44	Total paid out	61,448.17
0.00	Transfer to deposit account	0.00
<u>40,694.44</u>	<u>Total movement of funds</u>	<u>61,448.17</u>

Bank Reconciliation 2009 - 10

Current account

10,079.47	Opening balance at 1st April 2010	8,412.47
38,786.53	Receipts to 31st March 2011	40,704.79
2,640.55	Recharges received	6,028.86
	Sub total receipts	<u>46,733.65</u>
	Transfer from Dep Account	10,000.00
41,427.08	Sub total	<u>56,733.65</u>
51,506.55	Total balances and receipts	65,146.12
35,949.11	less, Payments to 31st March	55,534.95
4,745.33	less, recoverables	5,913.22
<u>0.00</u>	less, transfer to deposit account	<u>0.00</u>
<u>40,694.44</u>	Total payments	<u>61,448.17</u>
10,812.11	Balance	3,697.95
50.00	less receipts not on statement	0.00
<u>0.00</u>	add back, Unpresented cheques	<u>1,861.59</u>

10,762.11	Balance per bank statement 28th Mar 2010	5,559.54
Deposit account		
20,129.31	Opening balance	20,129.31
		-
	Transfer to current account	10,000.00
	Interest	<u>16.37</u>
20,129.31	Balance	10,145.68
30,941.42	Total Cash	13,843.63

Clerk to the Council: A J Le Riche, DMS, 43 Salisbury Road, Exmouth, EX8 1SL, Tel 279665/ 07866 535580 lympstonepc@leriche6.wanadoo.co.uk

From the Editor

NEW PARISH COUNCIL

Our new Parish Council will hold its first meeting at 7.30pm on Monday 16th March 2011 in the Committee Room at the Village hall. Everyone is welcome to come along to see the Parish Council in action. When full details of meetings are available, they will be published on the website www.lympstone.org
Other councillors are still needed.

C.M. Carter

**CALLING ALL GARDENERS...
and anyone interested in plants &
flowers!**

Exmouth & Lympstone Hospiscare are holding their Blooming Hospiscare event on Thursday, 19th May from **2pm - 5pm** in a marquee at Exmouth RFC.

Sarah Pepper, Darts Farm, and Barbara Clift will be doing short demonstrations about willow. Other stalls include:

Aquavision garden pond specialists, flower baskets, decorative plant holders, statues, paintings, plants & gifts.

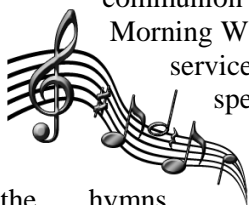
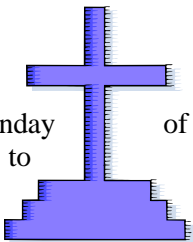
Q & A point to solve your gardening problems.

Tea, coffee, cake available. **Entry only £2.50, Tickets on the door, or available from Lympstone Nurseries.**

Frances Longhurst 263495

PARISH CHURCH

The Morning Worship service on the third Sunday of every month continues to attract the largest congregation of all services. Last month, as it happened to fall on Palm Sunday, it was the first time we held a communion service within the



Morning Worship. In July the service will be very special as we will involve a full jazz band to play for the hymns and songs of praise. It should be a great service and part of the programme of events for Lympstone Entertainments' Jazz Festival. [Next services 15th May and 19th June.]

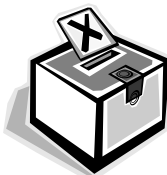
As we were unable to appoint a new rector for the Mission Community, and have no expectation in the near future of appointing one, it leaves a number of local decisions for our trainee priest Sid Humphreys (or Mr Sid to the pupils of the school.) He writes:

I have had some enquiries about confirmation. During the current vacancy I will need to take advice on the best way forward and to do this will need to know how many people would like to attend confirmation classes. There will be approximately 6 classes over a two month period. For further information and to express an interest in the first instance please contact me on 01395 274512.

^^

Election, election, election!

There will be a Special Parochial Vestry Meeting on Sunday 5th June after the 9.30am morning service in the church. It will be chaired by our Rural Dean Rev'd Canon David Price, and it is at this meeting we shall elect a new church warden. Anyone who is a resident in the Parish of Lympstone may take part in the election.



Jill Wilson secretary of the Parochial Church Council writes:

News from the PCC

There was a unanimous decision by the PCC to support Lympstone Primary School not by re-building, but by use of the church room site. This is now being explored by the school.

Brian Mather

FRIENDS OF LYMPSTONE PARISH CHURCH

The winner of the April Church Lottery was Demelza Henderson of The Strand with ticket number 752.



Joyce Malster

BUFFET THEATRE

The Lymestone Players' *Café Theatre* productions have been immensely popular over the past few years. Now they offer us *Buffet Theatre*. The play they are presenting on **23rd, 24th & 25th June** is Noel Coward's romantic drama, *Still Life*, which was famously filmed by David Lean as *Brief Encounter*, one of the best-loved romantic films ever made.

It is set in a station buffet, where two strangers meet. When Laura gets a piece of grit in her eye, there is a doctor on hand to help her out...

But there is a cast of ten in this production, for the life of the station swirls on around them, with the buffet manager, the waitress, the ticket inspector, the chocolate bar seller and two drunken soldiers getting on with their own lives and loves over the course of a year in 1936.

The audience will be able to sample the menu of the buffet (as interpreted by Shirley Wilkes) either before or after the show, when a supper is served for those who want it in **The Brief Encounter Buffet** (previously known as the Function Room).

The staging of the play will be imaginative, with the audience raked to give them an uninterrupted view of the performance.

Tickets are likely to be at a premium, and they go on sale at the Post Office from **Tuesday 24th May**, at £7 for the



performance, and £6 for the buffet supper.

This is the Lymestone Players' contribution to the celebrations for the 150th anniversary of the opening of the railway line. Don't miss the train!

Harland Walshaw

LYMPSTONE ENTERTAINMENTS



The Parish Church will be the venue for our next event, at 7.30pm on Saturday 4th June. That's when the highly acclaimed Piazzolla Duo (Ruth Avis, flute and Clive Betts, guitar) will be performing from their wide concert repertoire which includes music from the Baroque, Classical and Romantic periods, as well as more modern works by such composers as Villa Lobos and Albéniz. Tickets are now on sale at the Post Office, or you may book on the telephone by calling 01395 263928.

Then over a much-anticipated weekend in July we are bringing jazz to the gardens of Lymestone, as well as to the Village Hall and other hotspots: Brian Mather, organiser of this exciting festival, gives more details elsewhere in this issue.



John Eaton-Terry

THE LOOKOUT IS OPENING ...

...on the 17th & 19th of June, Will and Jackie Michelmore are opening their garden at The Lookout, Sowden Lane, Lympstone for the 4th year as part of the National Garden Scheme.

This scheme raises millions annually for caring charities including Macmillan, Marie Curie and Help The Hospices.

Over 2000 people have visited the garden openings, helping to raise nearly £10,000. This has benefited both NGS charities and Lympstone fundraising and Jackie and Will hope to raise a large amount for the Village Hall Refurbishment from their cream teas again this year.

Featured on TV gardening programmes and in the local press, this two-acre garden sits with its toes in the water near the mouth of the Exe Estuary. Originally the derelict 1920s-built mussel purification station has been lovingly transformed over the last 10 year by its garden designer owner into a wildlife friendly, family garden. Flotsam and jetsam finds sit amongst relaxed, naturalistic style seaside planting to give that washed up from the beach feel.

A short circular walk leads you from an area of jungly planting through a wild flower meadow, past a pond, through a

copse and along the river bank to a Mediterranean courtyard, with numerous places to stop and take in the views and salty air.

There are refreshments and plants on sale, a giant sandpit...with buckets & spades provided, and a photographic display showing how the site has evolved from the 1920s to the present day.



Due to some narrow gravel paths, steep slopes and steps disabled access is limited and stout footwear recommended!

Adults £3.50, children free, but must be closely supervised at all times. No car parking on site, but in adjacent field if weather permits and plenty of bike parking. Sorry no dogs.

Open 2–5pm on Friday 17th and 2–6pm on Sunday 19th June. Full details on www.ngs.org.uk . Also open by appointment from May to October, details on Lympstone.org

Jackie Michelmore



THANKS



I just wanted to say a big thank you for those who supported me in my recent London Marathon escapades! I was delighted to run the 26.3 miles in just over 3 hours and raise nearly £1850 for the charity Whizz Kidz. I have managed to secure a place in next year's marathon so the training begins in earnest once again. Many thanks for your support.

Mike Musgrove

POLICE REPORT

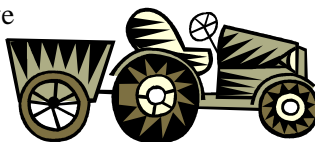
I am pleased to report that we have had no crimes in the village since my last update.

Parking in Lymington Village continues to be a concern for residents and can I please remind people not to park on the yellow lines, on junctions or to block drop curbs. Parking on pavements or private grounds without permission is also prohibited. Civil enforcement officers attend the village regularly and will issue tickets for the yellow lines and limited waiting, however, I will be looking at any vehicle causing obstructions and this could result in a ticket.

The Rural Neighbourhood Policing team is currently managed by two Beat Managers and three PCSOs from Exmouth Police Station. This covers all the rural villages from Sowton

Village through to Colaton Raleigh. As of the 20th May the rural patch will be run by one Beat Manager and three PCSOs. Myself and PC Simon Evans will be responsible for the Neighbourhood Policing of Lymington Village. We will be your main contact should you wish to discuss any matters or have any problems or concerns. Exmouth Police station is manned 24 hours a day by our colleagues.

We have



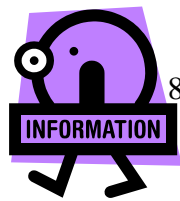
experienced a number of thefts of gardening and farm equipment from rural areas throughout East Devon recently. Please can I remind residents to secure your property and make a note of any identifiable marks and serial numbers. If you see any person or vehicle acting suspiciously, please contact the Police. Can I ask the boat/sailing community to be particularly vigilant due as we have experienced a number of thefts from boats in the Exmouth area recently.

PCSO 30110 Sarah Trayhurn

sarah.trayhurn@devonandcornwall.pn
n.police.uk

Mobex: 0845 656 7853

LYMPSTONE.ORG



The village website continues to go from strength to strength. As you will have seen elsewhere in this month's Herald, the poetry competition was a great success and is being judged as we go to press. Watch the website for the results!

Take a look at our noticeboard too - it is a great way of buying and selling things, as well as for making announcements and posting notices. Do please send any new items you have for publication on the website to news@lympstone.org.

Jan Teague

WALKING FOR HEALTH

Free walks every week in the Lympstone Area. It's free and easy.



East Devon Walk This Way is a scheme which is run by volunteers to help people recovering from illness to increase their stamina and fitness levels through walking. The scheme is set up and run by volunteers.

There is a summer walk in Lympstone on Wednesday 31st August meeting at the main car park in the village starting at 7.15pm. There are other walks in the surrounding areas on other dates.

All LED walks are free of charge. We simply ask that you bring enough money to join us for refreshments at the end if you would like to. Please wear

suitable clothing and strong, supportive footwear and bring a bottle of water on warm days.

Andrew Dare – 01404 814317

HOUSEHOLD WASTE NOT AFFECTED BY NEW CHARGES



In response to public concern, Devon County Council has issued a statement to reaffirm what types of waste will be affected by new charges introduced on 1st April.

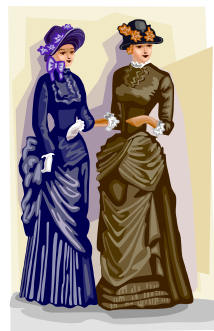
New charges will not be applied to general household waste. They are specifically for rubble, soil, plasterboard, asbestos and tyres only. Items such as garden waste, furniture and old electrical appliances, etc, will still be accepted free of charge. The charges will be:

£2 per bag of rubble, which could contain brick, stone, gravel or soil, and ceramic sanitary ware, £2 per tyre, £7 per bag, or full sheet of plasterboard £20 per bag, or full sheet, of asbestos.

For more information, please visit:
www.devon.gov.uk/recycling-centres

AVOCET 150

The 1st May and the celebrations of the 150th anniversary of the



opening of the Avocet Line was an event to be remembered! Lympstone did itself proud on the day with such a huge turnout at the station - many in Victorian dress. Well done, Lympstone!

People are also enjoying the other events organised in Lympstone (and elsewhere) as part of Avocet 150. The Film Society, who put on a successful railway film evening, are generously donating the profits from the evening to The Friends of Lympstone Station. The usual floral display will be in evidence this summer, which will fully stretch our volunteer waterers. Rather than extend it, we would welcome ideas about how else we might enhance our station with this money.

Viv Day 268653

Lympstone Co-ordinator for Avocet 150 and Friend of Lympstone Station

LYMPSTONE PRE-SCHOOL

Just to remind you to put Saturday 11th June in your diary for the annual Cake and Toy Sale to raise money for the Pre-School (at the Haven next door to the Globe). Any donations before the sale gratefully received.

Suzie Creighton



LYMPSTONE YOUNG PEOPLES' SOCIETY - PART TIME ASSISTANT YOUTH WORKER

We are currently seeking an enthusiastic person to help each week at the youth club on Friday evenings. We run two sessions, a monthly juniors club which runs from 5 – 6:30 pm on the first Friday of each month for 7 – 11 year olds, and a weekly seniors club, which runs every Friday (excepting some school holidays) from 6:45 – 9 pm. The appointed person would need to be available for both. Experience of working with children is preferable, and we particularly welcome applications from those with an enthusiasm for sports and outside activities. A good rate of pay is available to the right applicant. This post is subject to a CRB check.

Further information and an application are available by contacting me on louisacurrier@hotmail.com

Louisa Currier

ELLINGTONIA Café Style Concert Saturday 11th June

The only visit to Lympstone this year, tickets,



part tables and full tables (of 6-14) are going well for the only visit of one of the UK's leading Duke Ellington Bands_ Ellingtonia specialising in numbers from the 20's, 30's and 40's. There will also be an area for dancing – for those that wish. Doors open at 6.45pm when eating and drinking starts,(bring your own) and at 8.15 pm the concert will begin. The band will be giving a donation to Lymptone Village Hall Appeal and in the interval there will be a grand draw with fabulous prizes, all proceeds from the draw will also go to the appeal. The 2010 price has been held at £14 for adults and £7 for children, so bring your friends, family or whoever and phone me now on 274485 to book up. A fabulous evening is guaranteed.

Graham Martin

LYMPSTONE TWINNING ASSOCIATION

Eighteen Lymptonians will be travelling to Biéville-Beuville at the end of the month. Visits to a flax & linen factory and also to a calvados distillery are planned.

LYMPSTONE FISHERY & HARBOUR BOARD

The Lymptone Fishery & Harbour Board thank all members of the



community for their support and co-operation in the recent craning of boats to the water. Carried out during the afternoon, it was witnessed by many more people, but the whole process was nevertheless completed efficiently and without incident.

Col. G. Wheeler

LYMPSTONE.ORG WEBSITE ROYAL WEDDING POETRY COMPETITION



At the time of writing, 52 poems have been posted to the community website – a marvellous response! Closing date for entries is 8th May after which, the judges will be busy. The winners of the younger categories will have their poems sent to the Duke and Duchess of Cambridge! Look on the website to see the poems and in due course to find out the 3 category winners.

Richard Crisp

ART EXHIBITION

**Sunday 29th May - Sunday 5th June
10am - 5pm Function Room,
Lymptone Village Hall**

Lymptone Art Group's Annual Art Exhibition displays over 100 pieces of original artwork created by its

members. Over the years the group has gained a reputation for presenting a wide variety of mediums and styles to a high standard. Unframed original works, reproductions and many lovely cards will also be for sale. This year's raffle prize has been donated by Angela Coles and is a picture of Lympstone from the jetty, painted in Angela's unique style.

Don't miss this opportunity to see the work of local artists - and perhaps to buy something special! Free entrance for children.

Enquiries: Anne Crisp 01395 273211

LYMPSTONE JAZZ FESTIVAL

This year Lympstone Entertainments are bringing jazz bands to the village for the first **Lympstone Jazz Festival** featuring the unique 'Jazz in the Garden' concept. (We have booked all the local halls, in case of rain!)

Saturday afternoon:

On Saturday 16th July, six bands will play in 5 gardens and the Village Hall between 1pm and 5pm. The glorious setting of the gardens around the village and the music as you stroll around will make for an afternoon to remember.

The bands are:

The 'Hearnshaw Barrett Duo' playing from Bach to the Beatles,
Pianist and vocalist duo James and Hilda Clemas perform in the Village Hall,

'Bicton Street Blues' from Exmouth,

..

'The Garry Bywater Duo' from the Midlands,

'Take 4' from Exmouth
and 'The Failsworth Jazz
Band' playing trad jazz.



Each band plays at staggered times through the afternoon. Three begin at 1pm and play three 40-minute sets until 4pm and three bands play their 40-minute sets between 2pm and 5pm. The stroller ticket is priced at just £7, but only £5 if bought before the 1st July, with accompanied children (12 and under) free.

Friday and Saturday evening:

To open the Festival on Friday 15th we welcome the Gittisham Hall Jazz Band which is already well known to those who have enjoyed the Twinners' Jazz Brunch event.

On Saturday evening we are thrilled to have secured Charlie Hearnshaw with his Latin Quintet 'Munjenta Café.'

Tickets for the evening concerts will sell out fast as only 80 will be offered each night. This is to allow for room to enjoy the music and dance if you wish. There will be a bar at each evening event. Tickets for Friday are £7 each and Saturday £8.

Sunday:

The Morning Praise service in church, well established on the third Sunday every month, will feature Jazz on this special weekend. 9.30 am for coffee and croissants for the 10 am service.

In the afternoon the pubs will arrange their own jazz bands.

Box office:

The box office will be at the Post Office from 1st June or call 07435 634 455 (booking fee of 50p on this line for posting tickets).

There will be an opportunity for Lypstone residents to buy tickets at the Lypstone Entertainments' booth under the railway arch between 9am and 12 noon on Saturday May 28th.

Brian Mather

LYMPSTONE WI REPORT FOR MAY 2011

In the absence of the President Anne Frampton, Diana De La Rue Vice President opened the meeting and welcomed two guests. The Resolutions for the AGM to be held in Liverpool on June 1st were then debated.

1) Proposed Mega Farms, after general discussions on the pros and cons, the members voted overwhelmingly against.

2) Closure of local Libraries, after some general discussion the outcome of the vote was against closure.

Adrienne Hebdige was then asked to give her report on the Spring Council Meeting held in Torquay. After a rousing rendition of Jerusalem by around 1,200 ladies we were welcomed by the Torbay Council Leader. The business side of the day was soon taken care of, one main item on the agenda was the need for bigger headquarters for County House in Exeter, all groups were asked to hopefully help with fundraising.

^^

Mr Simon Hall of BBC Spotlight then gave us an insight into his job as a Television Journalist, and a writer of detective novels.

The Torbay Police Male Voice Choir entertained with some beautiful singing.

After lunch and a little more WI Business we were introduced to Adam Henson the farmer on Countryfile, he gave us a very interesting insight into his life as a Gloucester Farmer. He came dressed in the wool suit he had made from the wool of his own sheep.

After tea Moira Johnson was congratulated on being commended for her entry in the poetry competition at the Council Meeting. We were then entertained by the Drama Group, who read a collection of poems by their favourite authors.

There will be a fundraising supper on the 13th July in the Function Room and a litter pick on Mon 16th May.

Next meeting Wed June 1st the speaker to be Mrs Jan Lunn on designs on silk.

Jo Cotton

LYMPSTONE PLAYERS PANTOMIME TIME!



The time has come again to plan for our next Pantomime – *Robinson Crusoe*

and the Pirates! We will be holding auditions for new and existing members on Tuesday 21st June and Wednesday 22nd June in the Function Room of the Village Hall. Anyone aged 12 and under should arrive at 6.30pm and will leave by 7.30pm. Everyone else will be auditioned at 7.30pm. So if you fancy treading the boards and having great fun at the same time please come along – the shows themselves certainly reward all the hard work that everyone puts in. The rehearsals will commence on September 6th and will be every Tuesday and Wednesday until the show which this year will be the 15th, 16th and 17th December. So you do need to make sure you are available for all of these dates.

If singing and dancing aren't your cup of tea, but you would like to be involved in the production then we are holding a meeting for Backstage Crew on Monday 23rd May, also in the Function Room from 7.30pm to 9.00pm, again existing members and new are most welcome. For further information please contact me on 07889 303783.

Jo Borrie

LYMPSTONE.ORG

The village website continues to go from strength to strength. As you will have seen elsewhere in this month's Herald, the poetry competition was a great success and is being judged as we

go to press. Watch the website for the results!

Take a look at our noticeboard too - it is a great way of buying and selling things, as well as for making announcements and posting notices. Do please send any new items you have for publication on the website to news@lympstone.org.

Jan Teague

PTFA - UGLY BUG BALL FETE



Planning has already begun for this term's main event! On Sunday 10th July, the 'Ugly Bug Ball Fete' will take place at school. Events will include a BBQ, cream teas, treasure hunt and much more. So put the date in your diaries and watch this space for more details in next month's Herald.

Jan Teague

Advertisements

FOR SALE



Precast concrete workshop/studio

6.2m x 5m

Excludes asbestos roof but includes steel roof trusses

Buyer collects and dismantles

£200 ONO

Tel: 01395 278809

MUSIC STEPS

Music classes for babies, toddlers and pre-schoolers.

FREE trial classes!

See website for times and venues:

www.musicsteps.co.uk

Contact Kate: 07790

689196

the builder with difference

- professional local builder (CBC)
- large and small projects undertaken
- NHBC registered house-builder
- quality work, sensibly priced
- own skilled trades people
- new builds
- renovations
- extensions
- refurbishment
- maintenance

01392 267 219
www.snibor.co.uk

A PROFOUNDLY RELAXING TREATMENT The M Technique

Described as ‘a method of structured touch where each movement and sequence is done in a set pattern at a set pressure and set speed with its effects likened to physical hypnotherapy’. The M technique is suitable for almost everyone and is increasingly used in a wide range of settings; such as salons, hospitals and hospices.

Appointments now available at Remedies, Topsham and Queen Street Dental Practice, Budleigh Salterton.

Local M Technique Practitioner, Susie, is one of a team of complementary therapists who is also actively involved with FORCE and Hospiscare.

Enquiries Tel 0771 3200 907

Susan M Fishwick

M Technique Practitioner



SafeandSecure24™

Live Monitored Alarms

Specialists and Leaders in the Domestic Market
We design safety systems to your Specific Requirements
For a No Obligation, Free Security Survey Call Now!

TEL: 01395 265 074

Unit 4, South Farm Court, Budleigh Salterton EX9 7AY
www.safeandsecure24.com

LANDLORDS WANTED!

We are the only Lymington registered property management experts and are looking for more properties in the area to meet demand.



EATON-TERRY CLARK
PROPERTY MANAGEMENT

HELPING TO MANAGE YOUR PROPERTY MORE EFFICIENTLY

HOLIDAY LETS

RESIDENTIAL LETS

BLOCK MANAGEMENT

Tel: 01395 269955 Email: info@etcpm.com

www.etcpm.com

Members of ARLA and ARMA



<p>Peter J Acca Carpenter/Joiner Specialist PVCu Window Repairs</p> <p>Replacement double glazed sealed units</p> <p>01395 279209 07801365097</p> <p>Let me make your old windows like new</p>	 <p>Plumbing & Heating Engineers Installations Landlord safety certificates £39 Servicing • Breakdown • Repairs • General plumbing Tel: 01395 239483 Mob: 07710 192010 www.cygnetheating.co.uk</p>
<p>HURST PLUMBING</p> <p>Locally recommended Corgi registered plumbing and heating engineer. Complete bathroom design and installation service</p> <p>Specialist in floor and wall tiling All work undertaken is fully guaranteed</p> <p>Tel: 07711 757595 or 271152 MAKE HURST THE 1st FOR ALL YOUR PLUMBING REQUIREMENTS Est 1990</p>	<p>Need Assistance In Your Own Home?</p> <p>Home help available including: housework, laundry, ironing, food preparation, shopping, administration, collections and deliveries and errands. Please call Mandy on 07891 678 177.</p>
<p>VILLAGE LOGS</p> <p>Logs for sale - full loads £65 approx 1.25 cubic metres, half loads £40, nets £2.50, kindling £1.50, free delivery & kindling with all orders</p> <p>We can supply larger logs on request for commercial fires</p> <p>Tel Mark 01395 278647 / 07967685869 - available all year round</p>	<p>Ian Moir</p> <p>PROPERTY MAINTENANCE Painting, decorating, grass and hedge cutting, gutters, pressure washing, window cleaning and much more. All jobs to keep your property in tip top condition. I am locally based and offer free no obligation quotes. Contact Ian on (home) 01395 263 716 07702 804537</p>



HERE TO HELP

Quality Domestic Cleaning Services

Regular Housework, Spring, One off & Emergency Cleans

Managed Domestic Help of all Kinds

Professional, Reliable, Properly

Insured.

Covering Lymington & surrounding areas

01392 270777 www.poppiesexeter.co.uk



THE SWAN INN LYMPSTONE

01395 272644/270403

The Swan Inn - 'the heart of Lymington'

LUNCHCLUB BACK

MONDAY - FRIDAY except Bank Holidays and School Holidays
2 Courses £6.95 ~ 3 Courses £7.95 8th meal free with reward card

GREAT FOOD GREAT WINES GREAT TIMES

LYMPSTONE TAXI HIRE

Call: Phil **07812 661213**

Pine and Oak Furniture
Wardrobes
Chests of Drawers
Tables & Chairs
Dressers, Bookcases
...and much more, all available
Waxed, lacquered or painted finishes



Mattresses, Metal beds
Divans, Guest Beds
Pine Beds, Futons
Headboards
Pocket Sprung and
Memory Foam Mattresses
Removal of old beds undertaken



69-71 Exeter Road, Exmouth, Devon Tel 01395 271920
LARGE STOCKS www.exmouthbedandpine.co.uk **FREE DELIVERY**

Advertisements

HOST FAMILIES WANTED

Families are required to host foreign teenage students in 2011. The host families are required to provide bed, breakfast, a hot evening meal and a packed lunch. In addition to the lessons in the morning we organise a full sport and entertainment programme for the students in the afternoon and evening. We offer very good rates and conditions.

For information regarding dates, fees etc. please contact Ray or Claudia at The Lympstone Language School,
Bridge House, Underhill, Lympstone, Devon EX8 5HH
Tel. / Fax 01395 227333 e-mail: LympstoneLanguageSchool@btinternet.com

DOG GROOMING.

Kind & Qualified Groomer.

Commissions for **PET
PORTRAITS**

in pastel also undertaken.

Make Superb Presents.

(Examples of work can be viewed).

Tracey Crompton, Greenways,
Courtlands Lane, Lympstone.

Tel: 01395 **272815** /07973 986 268.



MIKE COLE BUILDING SERVICES

Tel: 01395 225 761

Mobile: 07540 976 257

**Bricklayer & General
Builder**

**Extensions, Renovations
& Alterations**

ELITE CARPENTRY & BUILDERS

All aspects of carpentry and building
works including fencing and decking

Undertaken to the highest standard

Fully insured references available

Call Daniel for free quotation or
advice

Tel 07872 018482 or 07886 500081

***Comfy casa near the Costa
Blanca, Spain - available for
holiday rentals***

Peaceful, secure, two-bedroomed
home. Roof terrace, gorgeous views,
communal pool and tennis. Beaches,
cycling, golf, hiking and much more.

Suits all ages.

Flights from Exeter & Bristol

Lympstone residents 15% discount

Tel: 07986 607610

www.algorfaholiday.com

FOOD WITH FLAIR CATERING

Small and Large Events -

Menus to Suit your Budget

Telephone Shirley or Michael

on **265147** or see our Website

www.foodwithflair.co.uk

ELECTRICIAN specialising
in domestic work; happy to
do small jobs.

Call Simon on 07985 963075



DustAway

All Work and no play, we are here to help
Friendly Efficient Cleaning Service
Lympstone Based

Weekly, Fortnightly, One-off Cleans.
Ironing service provided.

Please call Tracey 07727168817 or Jill 07818484864



THE GLOBE INN

01395 263166 - OPEN ALL DAY

Sheila and Dave would like to invite
you to a friendly, local pub with a
homely atmosphere offering
Local fresh fish dishes

Tue – Sat 12-2pm and 6.30 – 9pm

Sun lunch: 12– 2pm, 2 courses £8.95

Thurs – traditional fish & chips £6.75
(take-away £5.95)

Dogs welcome in Public Bar
LIVE MUSIC

Friday 27th – Steve Waters

June 3rd - Boogie Train Blues

June 11th – Eat the Rich

2 BED FLAT FOR B & B OR SELF-CATERING

APS PLUMBING AND HEATING

Gas installation & Maintenance
Complete Bathrooms General Plumbing
01395 5267823 & Mobile 07762419255

Alison Lee
Experienced Mobile
Hairdresser
C & G Qualified
Friendly and Reliable
Call me now!
07769 675449

Ladybird Garden Services
Your eco-friendly gardeners from Lymstone

For all your gardening needs: planting,
strimming, pruning, digging, mowing.

Consultancy service available.

Experienced and reliable service.

Reasonable rates.

Telephone Annie on 01395
275673/07814 510760.

ladybirdgardenservices@hotmail.co.uk

CLOCK REPAIRS

Terence C. Matthews - Horologist

- Westminster Chimes
- Wall Clocks
- Grandfather / Grandmother Clocks
- Dial Clocks
- Long Case Clocks
- Carriage Clocks

Free estimates and house visits

Tel: 01395 273563



**COMPUTER
REPAIRS**

**ELECTRO
COMPUTERS**

NO FIX - NO FEE



01395 548151 / 07944 051987

SMALL ADS

LYMPSTONE GREETING CARDS

Scenic photographs of your village - from the harbour, pretty corner, and washing-lines...to sunsets! Available from Post Office or Frances Longhurst 263495

REGISTERED HOMEOPATH

Libby Clapham BA, RSHom; Safe, eco-friendly, non-addictive; wide range of conditions; safe with conventional medicines; allergy testing. Clinics Exmouth and Exeter. libbyclapham naturalhealth.co.uk; tel 01395 267432

PICTURE FRAMING. For all your framing requirements; also frame restoration & chair caning. Caro Ambridge 01392 877460, Topsham.

CALPE - SPAIN

To let: 2 bedroom apartment with 2 balconies. 3 communal swimming pools and tennis courts. Beach front. Contact: June Hallett on 01392 873067
www.turmalina.co.uk

Chris Swaffield (BSc Hons)

- Devon Chiropractor
If it hurts I may be able to help.
Doctor of Chiropractic in Budleigh Salterton, Topsham and home visits.
Freephone 0800 043 7246
Mobile 07799098452

DE-STRESSING ,RELAXING, THERAPEUTIC

Neck & Back Massage, Indian Head Massage Reflexology & Reiki. Suppliers of unique MBT shoes to improve posture and relieve muscle, back & joint problems. Call 01392 873178 At The Studio, Lower Lane, Ebford
www.atthestudio.co.uk

Old London Bed and Breakfast the Strand EX8 5JW For a warm welcome and a great breakfast Ring Norma on 01395 266116 or visit www.oldlondonbandb.co.uk or email keith.exelby@sky.com

PIANO with a VIEW

Lessons for all ages, beginners and improvers, "purely for pleasure" and ABRSM exams to Grade 8. Theory to Grade 5.
Tel: Judy Joss (BA Mus, Dip Ed) on 222749

ENGLISH TUITION

Experienced tutor living in Lymington, available for English lessons. Primary and secondary levels. 1 : 1 CRB checked.
Please contact Mrs Jill Dabin for full details.
01395 263958

MATHS TUITION

Experienced tutor available to teach primary to GCSE level maths.
Reasonable rates Tel: Jane Moffatt on 279952

WHAT'S ON

MAY

14 Tennis Club disco
16 WI Litter Pick
19 Blooming Hospiscare
23 Panto - backstage crew meeting
28 Tickets for Jazz Festival
29 Annual Art Exhibition to 5th June

17 & 19 Open garden – The Lookout
21/22 Panto auditions
23 – 25 *Still Life*, Buffet Theatre

JUNE

1 WI
4 Piazzolla Duo concert
5 New church warden election
11 Pre-school cake & toy sale
11 Ellingtonia – Café style concert

JULY

13 WI Fundraising Supper
16 Jazz Festival

Photocopied at cost by: **Optima Graphics**

Litho and Silk Screen Printers

For an efficient and friendly service

Tel: 01392 873822

Fax: 01392 875760

Email: john@optimagraphics.co.uk

Website: www.optimagraphics.co.uk



20b High St, Topsham, Exeter, Devon, EX3 0EA