



From the Parish Council

DOGS FOULING CANDY'S FIELD ARE PREVENTING CHILDREN FROM PLAYING THERE - SHOULD DOGS BE EXCLUDED?

TO BE DEBATED AT THE NEXT PARISH COUNCIL – 21/5/12

Come along and give your views

(JUBILEE DETAILS ON CENTRE PAGES)

Editor: Chris Carter, Tel 274104. Copy editor – P Acca

Deputy Editor - Jan Teague, Advertising - Liz Griffiths

Lymstone web site – www.lympstone.org

Copy deadline for the next issue – Tues 7th May by 10 am

Copy by e-mail, if possible to chriscarterathome@hotmail.com

The Editor at Hillcrest, Greenhill Ave, Lymstone, EX8 5HW

Distribution by the Telfers, Tel 272275 and others

Clerk to the Council: A J Le Riche,
DMS, 43 Salisbury Road, Exmouth,
EX8 1SL, Tel 279665/ 07866 535580
mailto:clerk@lympstone.org

FROM THE EDITOR

DJ WANTED...

To play music for the Jubilee celebrations, particularly at the party on Cliff Field (Monday 4th June). Most equipment and 50s/60s music will be supplied. Please give me a ring ASAP.



ESTUARY TRAIL

Please note that all motorised vehicles except disabled vehicles are forbidden from using the trail. This includes power-assisted bicycles.

ANNUAL PARISH MEETING

At 7.30pm on Monday 21st May 2012 in the village hall. This is the chance for electors to raise issues about the parish and to discuss final arrangements for the jubilee weekend.

Chris Carter (Ed)

CHARITY OPEN GARDEN

Ever wondered what's behind the gates at The Lookout, Sowden End? Then look in on the 15th and 17th of June when the gates open as part of The

National Garden Scheme. The NGS raises millions of pounds annually for charities including Marie Curie, Macmillan Nurses and Help The Hospices.

Cream teas will be served with half of the proceeds going towards the village hall refurbishment.



This two-acre wildlife-friendly garden sits with its toes in the water and has been lovingly created out of Lypstone's old mussel purification station by its garden designer owner. Over 200 varieties of carefully selected plants, sea-trialled for their wind and salt tolerance, enjoy the challenges of coastal living.

On 15th June from 2 to 5pm, and 17th June from 2 to 6pm.

Admission £3.50, children free but must be accompanied. Sorry no dogs.

Full details on www.lympstone.org or www.ngs.org.uk and in NGS The Yellow Book.

Jackie Michelmore

EXE ESTUARY SPRING -CLEAN

The Exe Estuary Management Partnership is holding an Estuary clean-up event on Saturday 19th May 2012, between 12 noon and 2.00 pm, from the Imperial Recreation Ground, Exmouth. Everybody is welcome to come along and get involved. Please help spread the word.. It's a great way to blow away the cobwebs and burn some calories whilst making a real difference to the beauty and health of the Estuary and all its users. Good free family fun! Last autumn we organised a similar event that was a huge success, with around 130 volunteers working together to clear a skip full of litter from Exmouth Nature Reserve. A diverse array of items was recovered, including a chair, chimney pot - and even a kitchen sink! Who knows what we'll find this time...? Thanks to the very kind generosity of Stuart Line Cruises, we are able to offer a free river cruise with simple buffet on board to 80 volunteers after the clean up (on a first come, first served basis). East Devon District Council is kindly providing 40 free parking vouchers for volunteers whilst participating in the clean up.

So do come along if you can (and bring a friend), but please let me know if you plan to come so that I can ensure we have enough equipment - and enough food of course! Phone 01392 382236

Midge Kelly, Exe Estuary Officer

PLANT SALE WITH COFFEE, SATURDAY 12TH MAY AT 10AM

We are going to concentrate on providing more plants this year at the Garden Club's annual coffee morning and plant sale.

Now that's a novel idea! Check it out at the Methodist Hall where you can not only buy these plants, but enjoy a cup of coffee too.

Sheila Stone

PARISH CHURCH

The church annual meeting re-elected Mary Blair and Richard Giles to be wardens for another year. It was the new rector's first full Parish meeting and was attended by our new priest, Benedict Cambridge, who is going to be responsible for Littleham and Lymptsone churches. Benedict completes the new Mission Community team and will live in Littleham.

Details of the service to celebrate the Jubilee will be published elsewhere, but there will be a village event with all welcome (as everyone is to the church at any occasion or a quiet time for thought). On the day there is a plan to ring a Devon Peal on the bells to celebrate the historic event. All the usual events are going ahead with full details on the website or under the railway arch.



Apologies for a brief report this month and thanks to the editor for dropping me an e-mail to remind me (while I am on holiday a couple of hundred miles away and without my computer.)

Brian Mather

TEA AT THE CHURCH

Are you expecting a busy Summer? Why not come and relax on a summer Saturday afternoon in the peaceful atmosphere of Lympstone Church. Refreshments will be served at the back of the Church during, June beginning on the first weekend after the Jubilee – Sat .9th June, 2-4.30pm.

Jennifer Mather

POLICE

On the 11th May number plates were removed from two vehicles in Longmeadow Road. If anyone has any information regarding this theft, please call 101 quoting KE/12/843. Between 23rd and 24th May, a vehicle parked in Underhill car park had its chrome front grill stolen. KE/12/942 refers.

A pedal cycle was stolen from outside a property in Quay Lane overnight of the 2nd May. The bike was a black and grey Giant bike. If anyone has any information regarding this theft, please call 101 quoting KE/12/1009.



In the early hours of the morning on the 5th May a pedal cycle was stolen from a private residence at the Saddlers Arms. The bike is a white BMX with a gold wheel and purple chain. KE/12/1027 refers.

I have spoken to EDDC and the bike that was left abandoned and attached to the flood defence work in Chapel Road has now been removed. I have highlighted the two bikes that are abandoned and chained to the bike racks outside the Swan Inn and they are going to be removed in the near future. If anyone has any knowledge about who owns these bikes, please contact me on the details below. They have been *in situ* for approximately a year!

Boat Watch was successfully launched following a presentation at the Sailing Club on the 27th April. This will hopefully improve communication between the Police and water users and be a deterrent to any thieves.

I have been made aware that dog fouling in Candy's field has become extremely bad, with events for children having to be cancelled because of it. This is not acceptable and I will be asking the dog warden to robustly patrol the area and to issue tickets without warnings. If you know someone who is not clearing up after their dog, please let me know. With summer approaching this problem needs to be dealt with.

Sarah Trayhurn PCSO 30110

JACKSON MEADOW RESIDENTS' ASSOCIATION

As a newly formed group we are dedicated to the protection of our immediate neighbourhood and to the Village of which the Parish Church plays such an integral part. We are also concerned about the safety of our residents and particularly the many young children that live and play in our road. To that end we are concerned about all further development planned in our area.

We are a new group very much on a learning curve and with hindsight it was a mistake not to 'nail our colours to the wall' during our recent poster campaign. For that I apologise on behalf of JMRA to anyone that was inconvenienced and to the individuals of our group who were wrongly blamed.

Following an invitation by Stephen Guy (The EDDC Conservation Officer) as reported in the Exmouth Journal on the 1st March 2012. It was apparent to JMRA that Village residents were mostly unaware that the conservation area boundaries of Lypstone were up for discussion and renewal.

It was reported in the last issue of the Herald that our poster was a 'hoax'. Our Posters were produced to highlight that indeed our Parish Church is under threat from inappropriate modern high density housing, which, if allowed could be built almost to the walls of the Church itself. This would change the character and setting of our beautiful

600-year-old Church which is also a historical asset for all time!

At the Parish Council Meeting of the 2nd April 2011 the Village Conservation area was discussed and it was agreed to extend the conservation area around the Church and so afford it some protection for the future. JMRA see that as a positive step in the right direction and congratulate our Parish Council for making that decision.

Geoff Lill on behalf of JMRA

YOUNG SINGERS WANTED

Children from the ages of 8 to 18 are needed to form a chorus for Benjamin Britten's children's opera *The Little Sweep*, which will be performed in Lypstone on Thursday, 12th July. Please contact Sheila Stone on 274 356 if you would like to take part. Three or four rehearsals will be involved. We also need sweeps' brushes if anybody has a set. Tickets for the show are now available at the Post Office.



Harland Walshaw

CHARITY BINGO!

Exmouth & Lypstone Hospiscare is holding a Bingo evening in the marquee at Exmouth Rugby Club on Tuesday 15th May. Doors open at 7.15pm - eyes down at 8.00pm. Included in the price of only £6 will

be 6 games - Line and Full House plus Flyer line and Full House. Please come along with friends and support your local charity and have a fun-filled night with cash prizes! Further details - contact Lynne on 01395-279113.

Frances Longhurst

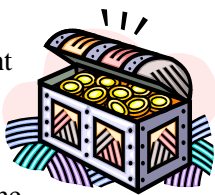
TREASURE HUNT

Family Treasure Hunt on the morning of Monday the 4th June. Find the clues along the Treasure Trail from Woodbury and get back to Lymptone in time for a barbecue lunch. There will be a small prize for children who collect all the clues along the way. Intended for families, newcomers to the village, and all those who want to enjoy a beautiful, child and dog friendly- route, around the Lymptone countryside. Reserve the date in your diaries and look for full details in the next edition of the Lymptone Herald.

Basil Strickland - 266935

ELLINGTONIA

A café-style concert in aid of the Lymptone Village Hall restorations - this year only will be on Saturday 29th September, instead of it's normal date in early June. This has become a very



popular communal event with tables to suit 4-12, with everyone bringing their own food and drink. Doors open at 6.45pm with the concert starting at 8.30pm. During the interval there is a Grand Draw, also in aid of Lymptone Village Hall restorations. There will be dancing for those that wish to dance. Tickets are £16 each (£8 for children under 16) and go on sale from 1st July 2012. Since there is limited space for everyone to have their own exclusive tables – early booking will ensure you have your own. Please phone me on 274485 as soon as you read this to make your reservations – even if it is before 1st July!

Graham Martin

1st LYMPTONE BROWNIES

In April the Brownies enjoyed activities linked to Earth Day. We made windmills and played games such as Earth Day Lotto and sang a great song reminding us to reduce, re-use and recycle! Another evening was based on St. George's Day when we made white rose badges and bookmarks. Then we had a great time at Crealy Adventure Park on Sunday 22nd April to celebrate St. George's Day with many other Guiding and Scouting groups from the area. In May we will be working towards our Jubilee Challenge Badge!

Rosie Jones (Brown Owl)

JUBILEE QUIZ

£60 prize, tickets available at all events for £1.



Suki Commin

WI

Despite the tempting sunshine on May 2nd, 25 WI members gathered in the Village Hall for the Institute's Annual General Meeting, preceded by a talk by member Brenda Courtie, *'Vicar's Wife at the W.I.'*

President, Anne Frampton, opened the AGM by introducing the 'Resolution' to be ratified at the NRW AGM at the Royal Albert Hall on May 30th. This called on the Government to *'increase investment in the training, employment and retention of midwives'* in order to counter current staff shortages, rising birth-rate and increasing pregnancy complications e.g. older mothers, obesity, rise in multiple births. The Resolution was approved unanimously. Next, Treasurer Adrienne Hebdige explained that the WI year now runs from April to fit in with Examiners' Reports, hence her Financial Report covered the six months from November. A cash 'refund' of £450 after the winding-up of the village compost scheme had allowed the Committee to fund a bursary of £250 towards the cost of a member attending a course at Denman College. Interested members were asked to put their names

in a draw, to take place on 31st May. (Additional names to Jo Cotton, please. Tel 275262). Then Secretary Jo Cotton gave a useful résumé of meetings and events for the period.

The AGM business was followed by the 'ordinary' meeting: Re: Jubilee events, on Jubilee Sunday the WI will be serving refreshments in the Village Hall from 2 to 3.30pm. Helpers needed, please. At the same time, there will be a display of photographs from the *'I Live Here'* project. Members are encouraged to join the list of residents pictured outside their homes. (Contact Jane Goss-Custard 277007) Invitations to our WI Jubilee Cream Tea on June 6th had been sent to known past members. (Please call Jo Cotton 278631 if you're still waiting for yours.) Members to wear Red, White and Blue for this event, please! Orders for WI diaries and calendars now being taken by Janet Ward. Jo Cotton was congratulated on becoming WI Group Secretary.

Finally, Diana Budgen gave an informative report on the recent Devon Federation Spring Council Meeting in Torquay. NFWI Chairman Ruth Bond had reported the continuing growth in new WIs, and described her various visits on our behalf. Guest Speaker 'gardening guru' Chris Beardshaw encouraged us to get children involved in gardening, and also to play music to our plants; a recent survey showed better growth for plants listening to classical music and 'Black Sabbath'!

Brenda Courtie

THE METHODIST CHURCH

All ages share our fellowship and we warmly welcome others to join us. Our Sunday worship is held at 10.30 a.m., with refreshments served before and after the Service. Our Services in May will be led by:

May 13th Rev Derek Boswell

May 20th Miss Audrey Cave

May 27th Rev David Bryon

Mrs Margaret Wearn

Senior Steward

CAFÉ THEATRE



Celebrate the Queen's Diamond Jubilee in regal style with the Lympstone Players who are proudly presenting Jubilee Revels Café Theatre.

On Thursday 24th, Friday, 25th and Saturday 26th May at 7.30 pm. (doors open 7.00 pm.)

At these performances there will be a Royal Supper prepared by Food with Flair and a Bar available.

On Saturday 26th May at 2.30 pm there will also be a Matinee with a Bar, Teas and Ice-Creams will be available.

Tickets now at Lympstone Post Office for all performances.

Prices: Adults £14.00, Under 13s £7.00,
Matinee Prices: Adults £6.00, Under 13s £3.00.

Shirley Wilkes

TORCH RELAY THROUGH LYMPSTONE



To celebrate the Queen's Jubilee and as a taster for the London Olympics, an organized Road Relay will make its way through the streets of Lympstone at 6:30pm on Monday, 4th June. We are honoured to have a replica of the 1948 sailing torch on this day and would like as many young people as possible to have a chance to carry it. If you would like to take part please e-mail mike.musgrove@sky.com for more details or phone Jenny Charles on 01395 264359.

Jenny Charles

NEEDING HELP WITH AGED PARENTS?

Before hiring help then a quick word with me might save you from some unscrupulous companies with bad reputations. At least one of these whose 'helpers' cannot be trusted advertises in Lympstone.

Tel 01395 265858

e.mail thecarrolls1@o2.co.uk

Linda Carroll



LYMPSTONE CELEBRATES HM QUEEN ELIZABETH II'S DIAMOND JUBILEE

**The Jubilee Weekend runs from
Saturday 2nd June – Tuesday 5th
June 2012 BUT in Lymptstone the
celebrations will start on Thursday
24th May 2012 and will run until
Saturday 10th June 2012.**

THURSDAY 24th, FRIDAY 25th and SATURDAY 26th MAY

The Lymptstone Players are Proudly
Presenting –“Jubilee Revels Café
Theatre”. Doors open 7.00 pm FOR
7.30pm. At these performances there
will be a Royal Supper prepared by
Food with Flair and the Bar will be
open. There will be a **Matinee
Performance, Saturday 26th May at
2.30 pm** with a Bar, Teas and Ice-
Creams. Tickets now at Lymptstone
Post Office .Price Adults £14.00, Under
13's £7.00. Matinee Price Adults £6.00
Under 13's £3.00

SATURDAY 2ND JUNE

Lymptstone Tennis Club are holding a
Jubilee Tournament during the

afternoon club session from 2pm.
Anyone interested in taking part is
asked to come along on the day and
bring something to share for afternoon
tea. Please wear red, white and blue if
you can.

Lymptstone Sailing Club is
holding their Annual
Regatta and there will be
an open Sail Past at
5pm. All boat owners in
the village are invited to



get involved – get down to the boat
shelter to launch your boat to be out on
the water before 5pm. All boats will
sail past the Yacht White Lady The
Commodore, Chas McLennan-Wiggin
and Graeme Wheeler will take the
salute.

SUNDAY 3RD JUNE

Lymptstone Parish Church is holding a
**JUBILEE THANKSGIVING
SERVICE** & Sunday School for
children at 10:30 am, led by Revd.
Geoffrey Wrayford.

After the service, there will be a
procession to Candy's Field

THE BIG JUBILEE PICNIC in
Candy's Field at 12.30pm. You can
bring your own table, chairs, food and
drink. There will be a prize for the
family in the most authentic period
dress. Refreshments will also be
provided by the Scouts, the Youth Club
& the W.I. There will also be Bar.
Proceedings will start with the singing
of the National Anthem. Come along &

meet friends old & new whilst enjoying your picnic. Activities for the young & not so young will include: storytelling, arts & crafts, football skills, a bouncy castle and games.

The **WI** will be serving teas in the Village Hall between 2.00 and 3.30 pm.

Lympstone History Society will display the Jubilee Community portraits, 'I live here', the photographic record of residents in the village. (It is not too late to have your photograph taken. Contact Jane Goss-Custard 01395 277007 or email johngc66@gmail.com)

Lympstone Twinning Association will have a display of 30 years of twinning in Lympstone.

MONDAY 4TH JUNE

The 1948 Olympic Sailing Torch

is coming to Lympstone for two days. It will arrive on the morning tide about 8am. It will leave to be with Exmouth Sailing Club by 5.30pm approx on the 5th June. The torch will be available for inclusion in other village events by request to Lympstone Sailing Club. John Goss-Custard will pipe the torch ashore and away on both days, standing on the cliff overlooking Darling Rock or on the Darling Rock end of the harbour wall. It is hoped that as many club members and villagers as possible will be able to come and welcome the torch ashore. LSC will host the torch until the evening tide on the following



day when a small flotilla of boats will escort it into the hands of Exe Sailing Club for its onward journey along the coast.

During its stay the torch will be put on view at the party on Cliff Field and available to visit other Jubilee venues taking place over those two days. With the torch will be a Good Wishes book and scrap book. Everyone will be invited to pen a good will message to our Olympic sailors for when it arrives at its destination.

All the youngsters are hereby challenged to produce inserts for the scrap book (size not to exceed A5). Come on kids – let's see what you can come up with.

Family Treasure Hunt. Try to find the clues along the Treasure Trail and get back to Lympstone in time for a barbecue lunch. There will be a small prize for children who collect all the clues along the way. This is intended for families, newcomers to the village, and all those who want to enjoy a beautiful, child and dog friendly route, around the Lympstone countryside. Reserve the date in your diaries and look for full details in the next edition of the Lympstone Herald or Contact Basil Strickland on 266935 for details

Fun Torch Relay

A Fun Relay with kids carrying the 1948 Olympic Torch from The Green to the Saddlers and then to Cliff Field is being planned by Mike Musgrove for 6.30pm.

Party Night on Cliff Field



Bring your own entertainment and food. There will be refreshments provided by the Scouts and a bar will be open. The Jubilee beacon will be lit at 10.15pm and there will be a fireworks display.

TUESDAY 5TH JUNE

The 1948 Olympic Sailing Torch

leaves Lymington around 5.30pm from the Boat Shelter

WEDNESDAY 6TH JUNE

The WI is holding a Diamond Jubilee Meeting with a Devonshire Cream Tea Party for current and former members at 2.30pm in the Village Hall

FRIDAY 8TH, SATURDAY 9TH AND SUNDAY 10TH JUNE

Jubilee Craft, Art and Quilting Show will be held in the Village Hall, 11:00am-4:00 pm Home-made Refreshments will be served each day.

Entrance fee is £1 with the proceeds going to the Village Hall fund.

SIXTY YEARS IN LYMPSTONE



People from Lymington have been busy making a textile book to commemorate the Diamond Jubilee, the textiles show Lymington as it is or was during the last 60 years. The first showing will be at a Jubilee Craft, Art and Quilting. We will look forward to seeing you there.

Jenny Charles

JUBILEE PRIZES

There are four prizes donated by the village pubs/restaurants to be awarded over the Jubilee weekend. The prizes are a dinner for two for:

- The best period dressed family at the picnic
- The best dressed boat in the Sail Past
- The best decorated house
- The best decorated garden

A J Le Riche



TENNIS CLUB DISCO

Tickets are now on sale for our biggest social event of the year and everyone is welcome. This year's theme is "Strictly" and will be held on Saturday 16th June in the village hall. Tickets cost £10 and include a welcome drink and nibbles.

Come along and strut your stuff on the dance floor and for those who dress to impress there's a prize for the best costume. Tickets available at club sessions on Tuesdays and Saturdays or contact Adrian Barton abvehicle@live.co.uk or Jill Dixon jillldixon100@hotmail.com.



Liz Griffiths

FANTASTIC FILM NIGHT!

With almost a full house at the Lympstone Band Centre on Friday 20th April at the band's latest concert, the band might have to plan ahead for a possibility of having to produce tickets or turn people away in the future such is the increasing popularity of this concert series! The 'Friday Night is Film Night' concert was a huge success, and featured music from 'Chicken Run', 'The Mission', 'Robin Hood Prince of Thieves', 'Titanic' and



'Elvira Madigan', with a special selection of well known pieces including 'Orange Juice' (Concerto D'Aranjuez – by Rodrigo) from 'Brassed Off!'. The band was most pleased to see new and familiar faces in the audience including members of the cast of Estuary Players from the recent production of 'Brassed Off!'. With Charlie Fleming in sparkling form, the soloists Colin McEwen, Sandie Heyworth, and Paul Vodden delivering solos in style, and the entire horn section shone with their rendition of the 'Elvira Madigan' theme. Our next concert at the Band Centre will be in the summer, please look out for more details nearer the time or sign up to our newsletter on the website.

We are now rehearsing for another contest, this time in Weston-Super-Mare but also thinking ahead to Exmouth Festival where we will be performing in the Manor Gardens in Exmouth on Thursday 31st May from 7.30pm. Of course the weather will be great so take a stroll down the cycle path and have a listen!

Lympstone Band

FRIENDS OF LYMPSTONE PARISH CHURCH

The winner of the April Church Lottery was Margaret Spencer of Burgman's Hill with ticket No. 774.

Joyce Malster

LYMPSTONE SCHOOL

Many members of our wider community will know that planning permission for an additional temporary classroom for our school has been



approved and that we expect it to be delivered and assembled before the start of next term. This addition will make a significant impact upon the quality of education that our children receive. As you may know there are currently seven classes been educated in six rooms. Our school has grown from just under a hundred pupils ten years ago to almost two hundred now, yet has received no capital investment in that time from the County Council

I am delighted, therefore, that the County Council have also now committed funds from the current financial year to buy the Church Room site, to demolish and remove the old building and to replace it with a new classroom. Further building work on that site will form part of the County Council's future strategy for our school.

Tony Priest - Headteacher



The perfect Lymptonian present!

Colour, photographic print on canvas of a stunning sunset on the estuary and Lymstone sea front

Two sizes: 48" x 12" - £80, or 32" x 8" - £65.

Look online at www.lympstone.org for full colour image.

To order call Joel on: 01395 273182.



THE SWAN INN LYMPSTONE

01395 272644/270403

info@theswaninn-lympstone.co.uk

The Swan Inn 'The heart of Lypstone'

Sat 12th May - Sam Green Acoustic Blues/Folk
Wed 16th May, 8pm Glory of the West, Lady Morris Dancers
Fri 25th May- Harry Dearsly
Tues 29th May Morris Dancers

Panache
INTERIORS



Bespoke Fitted Kitchens
Bedrooms Home Office Bathrooms
01404 813590

www.panacheinteriors.co.uk
see our display at Darts Farm, Topsham

HOST FAMILIES WANTED

Families required to host foreign teenage students in 2012. The host families are required to provide bed, breakfast, a hot evening meal and a packed lunch. In addition to the lessons in the morning we organise a full sport and entertainment programme for the students in the afternoon and evening. We offer very good rates and conditions.

For information regarding dates, fees etc. please contact Ray or Claudia at The Lypstone Language School, Bridge House, Underhill, Lypstone Devon EX8 5HH Tel. / Fax 01395 227333e-mail:

LypstoneLanguageSchool@btinternet.com

Peter J Acca

Carpenter/Joiner

Specialist PVCu

Window Repairs

Replacement double glazed sealed
units

01395 279209

07801365097

Let me make your old windows
like new



**Plumbing & Heating Engineers
Installations**

Landlord safety certificates £49

Servicing • Breakdown • Repairs

• **General plumbing**

Tel: 01395 239483

Mob: 07710 192010

www.cygnetheating.co.uk

**COMPUTER
REPAIRS**

**ELECTRO
COMPUTERS**

NO FIX - NO FEE



01395 548151 / 07944 051987

Need Assistance In Your Own Home?

Home help available including:
housework, laundry, ironing, food
preparation, shopping,
administration, collections and
deliveries and errands.

Please call Mandy on
07891 678 177.

SUMMER HOLIDAY

Why go abroad when one of
Cornwall's finest surfing beaches
is under 2 hours away!

Static home close to Polzeath beach,

2 bedrooms (1 double, 1 twin)

Mains H & C

Shower room with flush toilet

Fridge, gas cooker, . Colour TV/DVD.

For further details call 01395 233775

Ian Moir

PROPERTY MAINTENANCE

Painting, decorating, grass and hedge
cutting, gutters, pressure washing, window
cleaning and much more. All jobs to keep
your property in tip top condition.

I am locally based and offer free no
obligation quotes.

Contact Ian on (home) 01395 263 716
07702 804537

DOG GROOMING.

Kind & Qualified Groomer.

Commissions for **PET**

PORTRAITS

in pastel also undertaken.

Make Superb Presents.

(Examples of work can be viewed).

Tracey Crompton, Greenways,

Courtlands Lane, Lympstone.

Tel: 01395 272815 /07973 986 268.



CLOCK REPAIRS

Terence C. Matthews - Horologist

•Westminster Chimes

•Wall Clocks

•Grandfather / Grandmother Clocks

•Dial Clocks

•Long Case Clocks

•Carriage Clocks

Free estimates and house visits

Tel: 01395 273563



ELITE CARPENTRY & BUILDERS

All aspects of carpentry and building works including fencing and decking

Undertaken to the highest standard

Fully insured references available

Call Daniel for free quotation or advice

Tel 07872 018482 or 07886 500081

Comfy casa near the Costa Blanca, Spain - available for holiday rentals

Peaceful, two-bedroomed home. Roof terrace, gorgeous views, communal pool and tennis. Beaches, cycling, golf, hiking and more. Suits all ages.

Flights from Exeter & Bristol

LONG LETS AVAILABLE

Lympstone residents 15% discount

Tel: 07986 607610 or

see website for details:

www.algorfaholiday.com

FOOD WITH FLAIR CATERING

Small and Large Events -

Menus to Suit your Budget

Telephone Shirley or Michael

on **265147** or see our Website

www.foodwithflair.co.uk

ELECTRICIAN

Specialising in domestic work;
happy to do small jobs.

Call Simon on: 07985 963075



THE GLOBE INN

01395 263166 - OPEN ALL DAY

Sheila and Dave invite you to a friendly, local pub with a homely atmosphere.

FOOD SERVED - Tue – Sat 11am-2.15pm and 5.45 – 9.15pm

Sun lunch: 12– 2pm, 2 courses £9.50

Thurs – traditional fish & chips £6.95 (take-away £5.95)

Dogs welcome in Public Bar

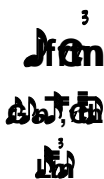
LIVE MUSIC:

Fri 18th May – STEVE WATERS

Fri 1st June – OVER-THE-HILL

LYMPSTONE TAXI HIRE

Call: Phil **07812 661213**



For Superior Quality Home Improvements and All Types of Building Work including Kitchens &



Lindsey Waddell
Foot Health Practitioner
MAFHP

Nail Cutting & Treatment of
Corns, Callus, Fungal Infections
and Verrucas

Home Visits [01395 263496](tel:01395263496)

PROPERTIES WANTED!

A continued increase in bookings means we are looking for more holiday letting properties to add to our portfolio:



EATON-TERRY CLARK
EXMOUTH HOLIDAYS

HELPING TO MANAGE YOUR PROPERTY MORE EFFICIENTLY

HOLIDAY LETS

RESIDENTIAL LETS

BLOCK MANAGEMENT

Tel: 01395 269955 Email: info@exmouthholidays.co.uk

www.exmouthholidays.co.uk

Members of ARLA and ARMA



DustAway



All Work and no play, we are here to help

Friendly Efficient Cleaning Service

Lympstone Based

Weekly, fortnightly, monthly

One off cleans ie moving house, holiday lets,

End of tenancy cleans, just redecorated or a spring clean

We also offer an ironing service

All materials supplied. Fully insured

Please call

Tracey 07727168817

or

Jill 07818484864

SMALL ADS

LYMPSTONE GREETING CARDS AND POSTCARDS

Scenic photographs of your village - from the harbour, pretty corner, and washing- lines...to sunsets! Available from Post Office or Frances Longhurst 263495

REGISTERED HOMEOPATH

Libby Clapham BA, RSHom; Safe, eco-friendly, non-addictive; wide range of conditions; safe with conventional medicines; allergy testing. Clinics Exmouth and Exeter. libbyclapham naturalhealth .co.uk; tel 01395 267432

PICTURE FRAMING. For all your framing requirements; also frame restoration & chair caning. Caro Ambridge 01392 877460, Topsham.

Advertise here for just 60p a line

DAWN 'TIL DUSK

Creative Gardening service
Routine maintenance, Designs & Creates. 0786 6566 883
dawnc@live.co.uk

**DE-STRESSING ,RELAXING,
THERAPEUTIC** Neck & Back
Massage, Indian Head Massage
Reflexology & Reiki. Suppliers of
unique MBT shoes to improve posture
and relieve muscle, back & joint
problems. Call 01392 873178 At The
Studio, Lower Lane, Ebford
www.atthestudio.co.uk

LADYBIRD GARDEN SERVICES

Your eco-friendly gardeners from
Lymptone for all your gardening
needs. Reasonable rates. Telephone
Annie on 01395 275673/07814510760

PIANO with a VIEW

Lessons for all ages, beginners and improvers,
"purely for pleasure" and ABRSM exams to Grade 8. Theory to Grade 5.
Tel: Judy Joss (BA Mus, Dip Ed) on 222749

MATHS TUITION

Experienced tutor available to teach primary to GCSE level maths.
Reasonable rates Tel: Jane Moffatt on 279952

ACCOMMODATION

Withall's House bed and breakfast. A modern and spacious home close to the heart of the village. Ample parking and flexible accommodation.

Call Pete and Jan Hardy on 01395 270157
Or visit www.lympstonebedandbreakfast.co.uk

Cygnat Cottage – 3 Bedrooms, close to water, £70 a night, minimum 2 nights
Call Chris or Judy Carter on 01395 274104
Or chriscarterathome@hotmail.com

**WHAT'S ON
JUNE**

MAY

12 Plant sale/Coffee Morning
13 Methodist Church service
14-18 Hospiscare Will Week
15 Charity Bingo
19 Estuary Cleanup
19 Hospiscare Midnight Walk
20 Methodist Church service
21 Annual Parish Meeting
24,25 & 26 Café Theatre
27 Methodist Church service
31 Lympstone Band at Manor Gdns

2 Jubilee Tennis tournament
2 Sailing Club Regatta
3 Jubilee Thanksgiving Service
3 Jubilee Picnic – Candy's Field
3 History Society display
3 Twinning Association display
4 Family Treasure Hunt
4 & 5 Torch Relay
5 Party Night w/ bonfire & fireworks
6 Cream Tea
8,9,10 Craft, Art & Quilting
9 Relax at the church
15 & 17 The Lookout Garden Open
16 Tennis Club Disco

JULY

12th *The Little Sweep*

Photocopied at cost by: **Optima Graphics**



Litho and Silk Screen Printers
For an efficient and friendly service

Tel: 01392 873822

Fax: 01392 875760

Email: john@optimagraphics.co.uk

Website: www.optimagraphics.co.uk

20b High St, Topsham, Exeter, Devon, EX3 0EA