



## From the Parish Council

### Flooding

Flooding in the Parish continues to be a great concern. Cllr Richard Eastley is the Parish Champion for the Environment and has done a sterling job in working with the Environment Agency to keep things moving. We have had a visit from an Officer and a list of works has been prepared but things seem to have come to a halt. We are also due for a visit from DCC Highway Engineers to look at works for highway drains to be cleared as these are also causing problems. Roger Stewart and Alfie Beer have volunteered to check flood problems and they made valiant and successful attempts to clear blockages in the Wotton Brook a few weeks ago. If you spot anything that you think might need attention, please let Richard, Roger or Alfie know so that we can arrange for something to be done before it grows into a bigger problem.

### Affordable Housing

The Planning permission for the land to the West of Strawberry hill includes 10 affordable houses. Cllr Jim Bailey, Affordable Housing Champion for the Parish will be approaching EDDC, The Community Council for Devon and Sovereign Housing Association to try to get the best deal for the Parish from this. We hope that the houses will be let to people with a local connection but these properties can only be let to those who are on the Housing Waiting List and have a clear housing need This can include people wishing to move to smaller accommodation as this will release a larger house for a family. So if you think that you are in housing need it is important that you register with EDDC as soon as possible so that you can get on the List. Please support all the good work that Jim has done over the last few years by registering now.

**Cont**

---

Editor: Chris Carter, Tel 274104. Copy editor – P Acca  
Deputy Editors - Terri Scott & Jan Teague, Advertising - Liz Griffiths

Lympstone web site – [www.lympstone.org](http://www.lympstone.org)

Copy deadline for the next issue – Tuesday Mar 5<sup>th</sup> by 10 am  
Copy by e-mail, if possible to [chriscarterathome@hotmail.com](mailto:chriscarterathome@hotmail.com)

The Editor at Hillcrest, Greenhill Ave, Lympstone, EX8 5HW

Distribution by the Telfers, Tel 272275 and others

## **Exe Estuary Flood and Coastal Erosion Risk Management Strategy**

This is the Environment Agency plan to manage tidal flood and erosion risks around the Exe Estuary over the next 100 years.

They are running a public consultation on the draft Exe Estuary Strategy from Monday 21 January 2013 until 5pm Monday 4 March 2013. This draft strategy takes into account predicted changes in sea level rise up to 2110 and sets out recommendations for new and improved coastal defences to protect local communities. The draft strategy also has to look after wildlife and landscape, as well as people and property.

The draft strategy recommends future improvements to flood defences at various places around the estuary, including at Dawlish Warren village, Exmouth, Starcross and Topsham. You can view the draft strategy, Environmental Report and other supporting documents, and comment on the strategy, on their Exe Estuary strategy consultation pages.

You can also find out more at one of their drop-in sessions:

21 January 2013: 5pm – 8.30pm,  
Dawlish Community College

28 January 2013: 1pm – 6pm, Topsham  
Matthews Hall

6 February 2013: 12 noon – 6pm,  
Exmouth Pavilion

This will be a major item for discussion at the next Parish Council meeting on

18th February 2013 so come along and hear what is proposed and how we think it might affect our Parish

*Clerk to the Council: A J Le Riche, DMS,  
43 Salisbury Road, Exmouth, EX8 1SL, Tel  
279665/ 07866 535580  
<mailto:clerk@lympstone.org>*

## **PLANNING CONFUSION**

Many of you will have seen the articles in the Parish Council minutes or in the Exmouth Journal about an application for planning permission to build houses behind homes on land described as being to the West of Strawberry Hill. People have tried to criticise the hard work that is being done by Parish Councillors and volunteers led by Cllr Rob Longhurst, in writing a Neighbourhood Plan for the Parish. They have clearly not understood the Planning process and have got their arguments completely wrong. In fact EDDC are now in a position of having to admit that they have got things terribly wrong and will have to consider granting planning permission for houses anywhere in the District unless there are good planning reasons for refusing them. I have sent them the following letter:

**Dear villagers,**

Planning in Lympstone

Having heard your statement at the last Parish Council meeting, I thought it might be helpful if I explained matters relating to planning applications for Lympstone.

As you know, planning applications are decided by the Development Management Committee or by Planning Officers of EDDC acting under a comprehensive scheme of delegation. The Parish Council must be consulted by law on all planning applications. There are other 'statutory' consultees as well. In coming to a decision on a planning application, planning matters take precedence over other matters. The guiding source for these is the East Devon Local Plan, National Planning Policy Framework and Supplementary Planning Guidance. Decisions and statements from Planning Inspectors who determine appeals against the refusal of planning applications are also a strong guide on how future similar applications might be considered.

The East Devon Local Plan (1995-2011) is the current, adopted Local Plan. It was adopted in 2006 and sets out the current planning policy for development in East Devon. The policies of the current adopted Local Plan should remain in place until the adoption of the New Local Plan (2011-2026). At this point all current policies will be superseded. However, the current Local Plan is now regarded as being out of date and a Planning Inspector has suggested that it will cease at the end of March 2013. From then until the new Local Plan is adopted the Planning Inspector's view is that there will be no Local Plan for East Devon.

Development proposals are judged against the relevant policies of the development plan for the area. In East Devon, this is currently made up of the adopted East Devon Local Plan, the Devon Structure Plan and the Devon Minerals and Waste Local Plans. A general description of key elements of the planning system, including its structure, the determination of planning applications and the Secretary of State's role is provided in a Communities and Local Government publication which can be viewed [The Planning System: General Principles](#).

You might see from this that the Parish Council plays one small part in the process for a planning application. So, where does a Neighbourhood Plan fit into this?

The Localism Act gave a statutory basis for Neighbourhood Plans to be drawn up.

The Government suggested that neighbourhood planning will allow communities, both residents, employees and business, to come together through a local parish council or neighbourhood forum and say where they think new houses, businesses and shops should go – and what they should look like.

These plans can be very simple and concise, or go into considerable detail where people want. Local communities will be able to use neighbourhood planning to grant full or outline planning permission in areas where they most want to see new homes and businesses, making it easier and quicker for development to go ahead.

Provided a Neighbourhood Development Plan or order is in line with national planning policy, with the strategic vision for the wider area set by the local authority, and with other legal requirements, local people will be able to vote on it in a referendum. If the plan is approved by a majority of those who vote, then the local authority will bring it into force.

Local planning authorities will be required to provide technical advice and support as neighbourhoods draw up their proposals. The Government is funding sources of help and advice for communities. This will help people take advantage of the opportunity to exercise influence over decisions that make a big difference to their lives.

However, the steps to achieve a full Plan were not readily defined and so those few Councils that have tackled them have been, to some extent, working in the dark. Despite promises from Government, EDDC have not offered technical help or applied for funding (until recently).

After the appeal against development at Courtlands was finished, the Council felt that a Neighbourhood Plan was essential to help to defend the Parish against future unwelcome planning applications. Cllr Rob Longhurst, as the Parish Council's Planning Champion, has been leading this process. He set up a Working Group to look at the detailed contents of a Neighbourhood Plan and the requirements for a detailed process to show that the statements contained in any plan were sound and had the

support of the Community. This Working Group included Councillors and Volunteers from our community, all of whom have put in a considerable effort, in their own time, to make progress.

At the same time, this Group has also been working through the SHLAA process (three times), the Local Development Framework process, the village boundaries process, the Housing Sites assessment and the Parish Council's response to the draft Local Plan (three times).

As you will have read above, the Neighbourhood Plan has to conform to various local regional and national planning policies. However, you will also see that there is no Local Plan for East Devon and it is expected that the draft Local Plan will not come into force until next year. Because of this, any Neighbourhood Plan cannot be adopted until a Local Plan is in place.

When the Parish Council heard that the Planning Inspectors took the view that there was to be a period of time when there was no Local Plan for East Devon, it urged the Working Group to continue its work as quickly as was reasonably possible so that at least we had a statement of community aspirations to use in defence of unwelcome planning applications. It will have no legal force but the Parish Council can only hope that it will have some measure of persuasion.

I hope that you can now understand that the Neighbourhood Plan cannot be brought into force through no fault of

the Parish Council and cannot be completed until after the draft local plan has been adopted. This means that it could not be used to back up any objections to the application for development on the land to the West of Strawberry Hill.

The Housing Sites Assessment by the Parish Council did not include this site as being suitable for development to meet the perceived needs for housing for the parish for the next fourteen years. This was the basis for the Parish Council's statement relating to the application.

In their report, the Planning Officers were of the view that several of the sites that were included were not capable of being developed at the moment as the owners or developers had not made any progress with regard to development. In doing so, this resulted in a perceived shortage of housing land. The Parish Council was extremely angry at this and held a meeting with the Chief Executive of EDDC to express its anger at the current failings of the Planning department and Council as a whole with regard to planning.

Under the current Local Plan there is provision for sites outside the Built up Area boundary to be developed as 'Exception' sites and this site fell into this category. The owner had prepared a scheme for development and a planning application was on the table. In planning terms this suggested that the land was capable of meeting perceived planning needs for housing.

The Officers therefore recommended that the application should be approved and this was accepted by the Development Management committee. The situation is much worse across the whole of East Devon as a result of two recent appeal decisions. These are stating that EDDC must have a developable land supply for housing to meet perceived needs over the next five years plus 20% to give developer's some choice as to where they might build. They are also making it clear that this land supply for housing has not been identified. This means that EDDC will have great difficulty in refusing any planning applications or defending appeals for housing development anywhere in the District.

There was a report put up to the meeting of the Development Management Committee on the 5<sup>th</sup> of February on this subject.

None of this is the doing of your Parish Council. The Working Group, under Cllr Longhurst's able leadership have made great progress on all of the major planning issues that have arisen over the last two – three years and without this, other applications may also have been approved.

I understand that Cllr Longhurst gave up two hours of his time to try to explain the position to you. I hope this somewhat lengthy letter has added to his explanation.

The Parish Council is still convinced of the need for the Neighbourhood Plan work to continue if we are to have any hope of defending the parish against

unwanted development but at the moment, we feel that EDDC has pulled the rug from under the feet of the whole District and we must do what we can to reduce the effect of this, if at all possible.

Yours sincerely, *A J Le Riche, Clerk to the Parish Council*

## **OUR PREDICAMENT from the Chairman of Lympstone Planning Committee.**

### **Background**

Government legislation requires all local planning authorities to maintain at least a five-year housing land supply (5YLS) in their area. East Devon District Council (EDDC) produces an Annual Monitoring Report which monitors the supply of housing land and that they can deliver a flexible supply of land for housing.

The “current” Local Plan for East Devon, which sets out the housing requirement for the District, expired in 2011 – the New Local Plan 2006-26 is currently in production and has now closed for consultation. Prior to it being adopted it has to go through a Public Enquiry led by a Planning Inspector. It is unlikely to be adopted until 2014.

As you can see there is a “Time Gap” between the end of the old plan and the adoption of the new plan.

The Localism Act seeks to devolve greater powers to local communities. It is from this legislation that we as a community get our right to determine

our own future through a Neighbourhood Plan.

### **Recent cases**

So where does this leave Lympstone (or indeed any other Town or Parish in East Devon). In truth the answer must be “we just don’t know”!! There have been three significant events which all conflict with each other;

1. In January 2013 the planning application for Glebelands was approved by EDDC against the wishes of the local residents and the community (as expressed in the Neighbourhood Plan consultations). It was justified on the grounds that it met EDDC’s policy of allowing mixed schemes for affordable and market housing outside the built up area of a village provided that a local housing need had been established and two thirds of the housing would be geared to meeting this need. The community wishes as to where housing should go (part of the Neighbourhood Plan) were not yet validated nor proven and could not therefore be given sufficient weight to justify a refusal.

2. In 2012 there were 5 large appeals (Courtlands Cross being the first). Of most significance was the appeal in November 2012 in Ottery St Mary. The appeal inquiry was heard from November 27<sup>th</sup> – 29<sup>th</sup> and inspector Neil Pope (who presided over the Courtlands enquiry) has since ruled in favour of the developer, saying there is a “*compelling*” case to approve the outline planning application. He acknowledged that there was

significant local opposition to the proposal, but said in the ruling: *“There is much local opposition to the appeal scheme and I have noted a government objective of empowering local people to shape their surroundings. Whilst I do not set these concerns aside lightly, local opposition is not in itself sufficient to withhold permission.”* In short, EDDC refused the application because it was felt the proposal was contrary to adopted development strategy and would lead to the loss of agricultural land, but the developer claimed that EDDC used “aged development plan policies” which were in conflict with the more recent National Planning Policy Framework. The inspector sided with the developer and said: *“I conclude that there is a shortfall in the five-year supply of housing land within the district and the proposal would not have any harmful implications for the adopted and emerging spatial vision for East Devon. I conclude that the proposal would not result in a significant and unacceptable loss of best and most versatile agricultural land. When all of the matters are weighed, there is a compelling case for releasing this site for housing and there are no adverse impacts that would significantly and demonstrably outweigh the benefits of the scheme. Whilst my findings will disappoint many residents, the evidence leads me to conclude that permission should not be withheld. The appeal should therefore succeed*

3 EDDC’s 5YLS figures have now been updated (along with a 20% penalty increase for not having a 5YLS in place in September 2012). The methodology used by EDDC has been based on the uniqueness of Cranbrook and they have therefore looked at the 5YLS in two sections the “West End” (Cranbrook) and the remainder of East Devon.

The Officers go on to state in paragraph 7.1 –*“In the light of the above considerations it is not regarded as appropriate to apply a ‘free-for-all’ or anything goes approach to granting planning permission. But the likelihood must remain (based on the reasoning used by the Inspector at the Ottery St Mary appeal) that we will, for some time at least, fall below having a five year land supply. Arguments of over-supply or even just having an acceptable supply of land will not therefore be a reasonable factor to use in refusing planning permission.”*

**This is completely unacceptable** since this gives developers carte blanche to put forward planning applications for land just outside the Built-up Area Boundary (BuAB) on the justification of a lack of a 5YLS. These without any heed of the need or effect on the local community – I can count in excess of potentially 500 new homes around Lymptstone, and currently our defences are very weak.

## **Action**

1. That is one reason why we must continue with the Neighbourhood Plan.

It may not carry “significant weight” until it has been subject to an examination and referendum – but it will reflect and represent the community view and it might be all we have in our defence in the absence of an up-to date Local Plan.

2. Pressure must be brought to bear upon EDDC to come up with an alternative to a “accept the inevitable” as a working policy. Members must insist that an interim policy is put in place until the New Local Plan is adopted in 2014 and will be defended by them at appeals.

3. The seriousness of this situation must be brought to public attention through exposure to the media.

*Some of Lympstone Council attend the Meeting of the EDDC Management Development Committee on the 5th Feb - and will report on progress. The Herald and Lympstone.org web site will carry the latest developments.*

*Rob Longhurst, 27<sup>th</sup> January 2013  
(Abridged by C M Carter)*

## **ANNUAL PARISH DINNER**

If you wish to join your council for dinner at the Redwing on the 9<sup>th</sup> of March contact Cllr P Acca on 279209.



## **GARDEN CLUB MEETING GARDENING FOR WILDLIFE**



Wednesday 13th February in the Village Hall, Function Room, at 7.30 pm. Following last year's popular talk, John Allen (Leader of the RSPB Torbay) returns. This time he will tell us how we, as gardeners, can encourage wildlife in our gardens. £3 entry, all welcome.

*Ian Stratford*

## **POLICE**



Two crimes reported since the last meeting: KE/13/103 – Fraud which occurred on the 11<sup>th</sup> January KE/13/187 – Burglary to dwelling which occurred at a property on the 26<sup>th</sup> January. This crime is being investigated by our CID department.

Calls to our communications centre during this period:

1 x administration; 1 x road traffic incident: 4 x highway disruption:

2 x abandoned calls/ false alarms: 1 x lost property: 1 x gunshots heard (checked by officers and all in order)

The rural Police team will be looking at Rural Crime, Crime prevention and speed awareness.

*PCSO Sarah Trayhurn 30110*

*Sarah.trayhurn@devonandcornwall.pn  
n.police.uk.General enquiries 101*



## 'It's Behind You'....Robin Hood and his Merry Maidens'



....a dog is behind you – behind you..... Fear not for Robin will be there and the worst that might happen is a trickle on your leg or the comely Dame might seek you out.

And we hear that Prince John and his Princess Arachnid with her golden locks choose in the end to retire to Lympstone. Do we want them here or should they be repatriated to Topsham so that we can truly rejoice in our King Richard and his interesting pouch? And the big question - the dumbbell - was it that the village boy and Robin were strong and the rest were weaklings??? Had you ever dreamed that Nutwell, Haldon Woods and Exeter castle held this treasure-trove of local history of Robin Hood and his band of merry maidens? Well now you know. The pantomime, the story of Robin Hood and the Merry Maidens was indeed a treasure trove of bright happenings that wove its way through the attempts of Prince John to wrest the crown from the more substantial head of King Richard via intrigues of taxes on the villagers, the Sheriff with his own fearsome agenda, a flouncy dame and the growing attachment of Robin Hood and, inevitably, Maid Marion. A fantastic effort from all on and off, behind and in front of stage, the music, the director, the musical director, the pianist and other musicians, the

children, the newcomers and those established performers.

*Jenny Moon*

## NEW GAS SUPPLY

From Wednesday 13 February 2013

Anticipated finish Friday 15 February 2013 No person shall cause or permit any vehicle to proceed or wait on the sections of Affected Roads except for access to land or premises on or adjacent to the roads affected - Underhill, Lympstone the alternative, signed, route for vehicles will be - via chapel road, the strand this temporary restriction is considered necessary to lay a new gas supply For additional information contact: Wales & West Utilities

Telephone: 07899 062950

Dated: Wednesday 6 February 2013

*Wales and West Utilities*

## THANKYOU

Fen and Richard Bound and family would like to express their sincere thanks to the many kind messages and cards received with regards to the illness of Fen's Mother Hazel MacDonald who sadly passed away on Saturday 12<sup>th</sup> January. Your thoughts greatly helped the family during a very difficult time

*Lisa Riggs*



## PARISH CHURCH

### CHOIR

Philip White writes: Following my earlier notices in Advent I now have a number of children who are interested in joining the choir. I intend to start with practices for these children in the next few weeks. It is intended that practices will be held in church after school. Any children who are interested in joining please contact Philip White, organist and choirmaster, tel: 01395 264469.

TAIZE - "Everyone's welcome to the Mission Community Taizé Service in Lymptone Parish Church on Sunday 10th February at 5 pm. It will be an informal service, including Taizé chants, prayers and readings. Musicians and singers of all abilities, who would like to help lead the chants, are invited to a sing-/play-through before the service at 4pm. If you have any questions, or want to know more, please ring Revd Maureen Douglas (225963) or Demelza Henderson (272243)".

### ARE YOU INTERESTED IN BEING CONFIRMED?

The next confirmation service is going to be at Holy Trinity Church on Sunday 5th May at 4pm. The Bishop of Exeter will be leading the service. Please contact Revd James or any member of the ministry team if you would be interested to know more - whether as a young person or an adult of any age - it's never too late! Preparation for



being confirmed will begin in mid-March.

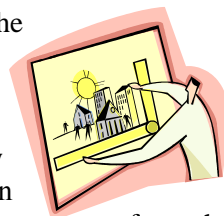
### THE LENT COURSE FOR 2013

#### LIFE ATTITUDES:

A 5 week course on living the Beatitudes( the Sermon on the Mount) Sundays 5-6pm, (PLEASE NOTE THE REVISED EARLIER TIME) 17th February – 17th March, to be held in Lymptone Church, Mondays 7-9pm, 18<sup>th</sup> Feb - 18<sup>th</sup> March, at Holy Trinity Hall, Tuesdays 10- 12noon, 19<sup>th</sup> Feb – 19<sup>th</sup> March, in Littleham Church. You can mix and match these venues as the courses will be running concurrently. Please sign up on list at the back of the church as soon as possible so that the course booklets can be ordered. Donations towards the cost will be welcome. Tel: Vanessa Simpson (224734) or Graham Pearson (225153) for more details.

#### DATES FOR YOUR DIARY

Re-ordering of the east end of the church – there will be a presentation, accompanied by architect's plans, on



Sunday 10 February after the 9.30am service in church. Coffee will be served, and there will be an opportunity for people to discuss the re-ordering in small groups, and then to ask questions and make comments.

#### LENT LUNCHESES

The very popular Lent Lunches begin on Monday 18th February every week until 18th March, served from noon until 1.30pm in the Methodist Hall,

Chapel Rd, Lymptone. A simple lunch of bread and homemade soup, cheese and apples. £3.50 in aid of charity. Everyone welcome to enjoy this social occasion with a frugal lunch.

#### **FAIR TRADE**

Fair Trade fortnight is coming up. The church will hold a service and stall with fair trade goods on 17th February and again at the usual coffee morning on Tuesday 26th February.

#### **HYMNS OF FAITH**

Rev'd. Geoffrey Wrayford will lead a twenty minute reflection on five "Hymns of Faith" by writers from George Herbert to Tom Troeger at 10.30am on Wednesdays 20<sup>th</sup> & 27<sup>th</sup> February and 6<sup>th</sup>, 13<sup>th</sup> & 20<sup>th</sup> March at Lymptone Parish Church. These reflections will provide an opportunity to explore the faith of the writers of these five hymns, from the well-known to those lesser-known. There will be a short break before the 11am said Eucharist to enable people to leave or arrive.

*Jill Wilson and Brian Mather*

#### **FURRY DANCE OPEN MEETING UPDATE**

The Friends of the Furry Dance were pleased with the turn out at the recent open meeting. It was unanimously agreed that the increasing anti-social behaviour experienced after the dance needed to be addressed and a more family friendly atmosphere should be encouraged.

With this in mind the committee was happy to take away the following positive suggestions to be discussed at the next full committee meeting;

Make the Furry Dance and the Fancy Dress Competition an afternoon event.

Bring all the day's events into the heart of the village.

Resurrect the Pannier Market.

Careful consideration to be given to the location of the Fancy Dress competition to accommodate the needs of both spectators and entrants.

Encourage greater family participation, with craft workshops, entertainments and the involvement of local youth groups.

We will keep you informed of further developments.

*Chris Doak*



#### **PTFA**

It's Quiz Time! Saturday March 2nd is the PTFA's annual quiz and supper evening. Tickets are only £10 a head, with tables of 8 or buy as many or as few tickets as you need. It's a really fun evening (with a licensed bar!) and a great way to raise money for the school. Please phone Sam Bungard on 07973 473 961 for tickets or register interest on the Facebook page ([www.facebook.com/LymptonePTFA](http://www.facebook.com/LymptonePTFA)) .

*Suzie Creighton*

## TREASURER NEEDED, CAN YOU HELP

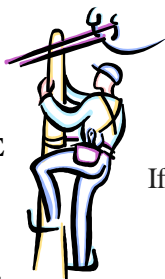
In April this year at Lypstone History Society's AGM the gentleman who's acted as Treasurer for many years will sadly be standing down. This leaves a vacancy which must be filled in order for the society to continue. The Treasurer's role includes producing a computer print-out of our balance, of which can be done without any particular software, the outgoing Treasurer is happy to go through the duties with anyone interested. The History Society has a special place within Lypstone's community and it would be a shame to call it a day, when the Society has so much more to offer. Please ring Angela Coles on 01395 264824 or email [LypstoneHistorySociety@hotmail.co.uk](mailto:LypstoneHistorySociety@hotmail.co.uk) if you feel you can help, thank you.



*Angela Cole*

## Underhill & Lower Lypstone Area SUPERFAST BROADBAND UPDATE

you have received a leaflet from us you are one of the 202 properties who will not have the option to be connected to the Lypstone Superfast network. A big thank you to the 38



properties who have already taken our suggested actions.

If you are still to do so, please act before 20 February by registering at <http://www.connectingdevonandsomers.co.uk/we-need-you/>, and don't forget to let us know that you have done so on: [superfastnow@sky.com](mailto:superfastnow@sky.com) and we will add you to our email group to provide future updates on progress.

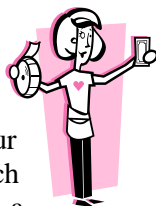
You may also contact us on: [superfastnow@sky.com](mailto:superfastnow@sky.com) if you need any information or help.

*Miles Freeman, Alan Burton & Don Mildenhall*

## METHODIST CHURCH

We would like to up-date readers about a recent change to the letting arrangements for our premises. The Church Council has approved a proposal to allow Raffles to be held at Lypstone Methodist Church. These can take place from now on - providing no prize exceeds a monetary value of £50 and no alcoholic beverages be offered as prizes.

For details about hiring the premises for events, please contact Gillian Hipkins on 224442, e-mail: [gillianhipkins@hotmail.co.uk](mailto:gillianhipkins@hotmail.co.uk).



*Margaret Wearn*

## SCAM WARNING

New Area Code - PLEASE READ Be sure you read this and pass it on.

809 Area Code We actually received a call last week from the 809 area code. The woman said 'Hey, this is Karen. Sorry I missed you- get back to us quickly. I have something important to tell you.' Then she repeated a phone number beginning with 809. We did not respond. Then this week, we received the following e-mail: Do Not DIAL AREA CODE 809, 284, AND 876 from the UK . U.S. Australia or Canada They get you to call by telling you that it is information about a family member who has been ill or to tell you someone has been arrested, died, or to let you know you have won a wonderful prize, etc. In each case, you are told to call the 809 number right away. Since there are so many new area codes these days, people unknowingly return these calls. If you call from the UK you will apparently be charged a minimum of \$2425 per-minute. And you'll also get a long recorded message. The point is they will try to keep you on the phone as long as possible to increase the charges. WHY IT WORKS: The 809 area code is located in the Dominican Republic ....

The charges afterwards can become a real nightmare. That's because you did actually make the call. If you complain, both your local phone company and your long distance carrier will not want to get involved and will most likely tell you that they are simply providing the

billing for the foreign company. You'll end up dealing with a foreign company that argues they have done nothing wrong.

Please forward this entire message to your friends, family and colleagues to help them become aware of this scam.

*Police Community Messaging System*

## LYMPSTONE BROWNIES

Lympstone Brownies' 90th Birthday Party on 16th January was a



great success. It was lovely to have past Brownies and Leaders to help us celebrate. The cake was fantastic and the Brownies, parents and guests had a great time. Everyone received a specially made badge to commemorate the occasion. A big thank you to Lympstone Parish Council for their financial support of our party. Also in January we had a Winter themed evening with crafts and a "newspaper" snowball fight! Plus a World theme evening with activities and songs.

February themes will include Chinese New Year and World Thinking Day celebrations.

We have a new way to put names onto the Brownies waiting list. Parents should go to [girlguiding.ukjoinus](http://girlguiding.ukjoinus) website to register their daughter.

*Rosie Jones*

## CHARITY AFTERNOON TEA

Please come and support Motor Neurone Disease by having a traditional cream tea in Lymestone Village Hall on March 16th between 3 and 5 pm.



Local resident and professional caterer Diana Richards will be attempting various half marathons plus the London Marathon in order to raise funds and awareness for Motor Neurones. Rather than asking for sponsorship (although that would be very gratefully received!) Diana and her family are asking friends and neighbours to come and enjoy tea in the village hall. All profits will go to the charity as part of her running and baking fund raising attempt. Adult afternoon tea will be £4.00 and for a family of four (2 adults plus 2 children) £10.00.

Tickets to be booked/purchased in advance from Diana on 01395 260095. Your support would be gratefully appreciated.

*Diana Richards*

## FRIENDS OF LYMPSTONE PARISH CHURCH

The winner of the January Church Lottery was Mr Gordon with ticket no. 881.

*Joyce Malster*

## YOUR NEXT FILMS

The February Film Society matinee is *Paper Moon* with Ryan & Tatum O'Neal. See it at 2.15pm Tuesday 19<sup>th</sup> Feb at the Methodist Hall; £3 inc refreshments.



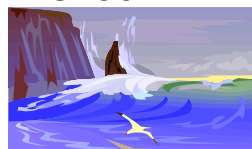
The next Friday film is on 8<sup>th</sup> March (6.45 for 7.30pm) and is *Double Indemnity*. This is Billy Wilder's classic thriller with crackling screenplay by Raymond Chandler. Free to members; £5 at the door for others.

This year we have seen disappointingly small audiences at our Tuesday matinees. We need about 25-30 people to make them viable and this year we have had 6 to 17. If you value these screenings, do let us know – and come along. Without more support we will be unable to continue matinees next year.

*Don Mildenhall*

## LYMPSTONE ART GROUP

The next talk is on Thursday 21st February on "Seascapes



in Oils" by Roy Lang, an accomplished seascape artist who will give a talk and demonstration, illustrating the techniques he uses. It will be held at 7.30pm in the Methodist Hall, Chapel Road. All are welcome, free to members, £3 for guests. If you would like to join the Art Group it is only £10 a year which includes attendance at all

talks . Just come along on the night or contact [judith\\_carter@hotmail.com](mailto:judith_carter@hotmail.com) 274104.

We have two workshops this Spring ; the first on 6th March which is a "Pure Colour using Acrylics" by Patrick Jones and the other on 10th April is a Printing workshop using mono and collograph printing techniques. If you are interested in either of these workshops contact Mai Targett for further details [maitargett@btinternet.com](mailto:maitargett@btinternet.com) 271915

*Judith Carter*

## **MOBILE LIBRARY**

Friday, 16<sup>th</sup> Feb. Friday,  
March 2nd, 16th and 30<sup>th</sup>.

Meadow Close 10.50-  
11.10am, Car Park 11.30 - 12.45pm



*Diana Letcher*

## **WI**

At our February meeting we were given a very informative talk by Mike and Vera Saffin, volunteers with the Devon Air Ambulance Trust, which is the charity which raises funds to keep two emergency Air Ambulances flying – one of which is owned by the Trust, the other is leased. Following the death of her 18 year old son, Ceri, in a road accident in 1986, Ann Thomas asked the doctors at the hospital if there was anything that might have been done to save her son. She was told the quicker

a patient receives emergency medical treatment, the better chance there is of survival, so, following her initiative, in 1992 the Devon Air Ambulance Service went into operation. The charity has no Government or Lottery funding, but is entirely dependent on the goodwill of donations, primarily from Devon people of all ages. It now has eleven shops and runs its own lottery. There are many ways for volunteers to get involved.

In the business section of the meeting, we were encouraged to look at the various notices about forthcoming area W.I. events – including canoeing on the River Dart! The Lymptone lunch will be on 21<sup>st</sup> February and the Annual Meeting on 3<sup>rd</sup> April.

Our next meeting is on Wednesday, 6<sup>th</sup> March at 2.30 p.m. in the Village Hall, and bearing in mind the approach of Easter, the talk will be “An Egg is not only for Easter, its folklore and history”.


*Heather Stratford*

## **FROM THE EDITOR**

**Disclaimer** This site is compiled from emails sent to the editor by numerous people and very little of the information is checked before publishing which is done in good faith!

*Chris Carter*





Open the door  
to your property's  
potential...

The Wilkinson & Grant & Co Open House campaign is proving a great success, with many properties attracting more than 20 viewings in just 90 minutes and in some cases multiple bids on the same property. If you are interested in selling, contact us now for more details.

**Topsham: 01392 875000**

**Exeter: 01392 427500**

**[www.wilkinsongrant.co.uk](http://www.wilkinsongrant.co.uk)**

**WG** **Wilkinson  
Grant & Co**  
PROPERTY AGENTS



## Clock Repair & Restoration



*Sensitive treatment of Quality clocks*

### *Carriage clocks to Longcase*

Chris Cartwright MA Cantab MBHI  
*Certified Member of the  
British Horological Institute*

Topsham based

- ✓ Fully equipped workshop
- ✓ Collection/delivery available
- ✓ No obligation estimates

01392 204879 [clocks@fpcl.demon.co.uk](mailto:clocks@fpcl.demon.co.uk)



### **Do you have friends or family wanting to stay?**

Why not recommend one of our modern self-catering cottages.

Open all year round.

Short breaks available early/late

Located on the B3180

Exmouth Road | Nr Aylesbeare | Exeter | EX5 2LF  
01395 233619

Best Chimney Clean Ltd est 1954,  
APICS and HETAS Approved

## **Chimney Sweep**

Brush and Vacuum, Fully insured  
Jonathan on 01392 254 120

[hello@bestchimneyclean.co.uk](mailto:hello@bestchimneyclean.co.uk)  
[www.bestchimneyclean.co.uk](http://www.bestchimneyclean.co.uk)

## **SIMON QUICK THE LOG MAN**

For all your coal, kindling & gas  
supplies - **Tel 01395 267490**

## **HOST FAMILIES WANTED**

Families required to host foreign teenage students in 2013. The host families are required to provide bed, breakfast, a hot evening meal and a packed lunch. In addition to the lessons in the morning we organise a full sport and entertainment programme for the students in the afternoon and evening. We offer very good rates and conditions. For information regarding dates, fees etc. please contact Ray or Claudia at The Lymestone Language School,  
Tel. / Fax 01404 815190 or 07831 385220  
e-mail:

[LymestoneLanguageSchool@btinternet.com](mailto:LymestoneLanguageSchool@btinternet.com)  
website  
<http://www.lymstonelanguageschool.co.uk>



# Considering Selling?

Contact us for more information  
and a free, no-obligation market appraisal.

- London Mayfair office
- Local, regional and national advertising
- Over 300 associated office across the UK
- Friendly and enthusiastic selling staff
- Good quality photography and detailed floor plans
- 20 years' experience selling good quality homes across Devon
- Individual service focusing on our clients' needs
- Regular feedback
- Available for evening and Sunday viewings

**01395 225303** [www.bainbridgesouthwest.co.uk](http://www.bainbridgesouthwest.co.uk)



**HOMERESTYLER**  
IDEAS • INSPIRATION • INTERIORS



Whether you want a quick makeover or a complete re-design, I offer creative, affordable & personal interior styling services to help you make the most of your home.

07799712338

katey@homerestylar.co.uk

www.homerestylar.co.uk

*As seen in Devon Life magazine*

---

## LYMPSTONE TAXI HIRE

Call: Phil 07812 661213



---

**r & b Interior decorators**

**The female painting and  
decorating service**

Friendly, local, reliable,  
fully insured

Call Sam or Marge  
T: 01395 225182  
M: 07973 473961

## **DOG GROOMING.**

*Kind & Qualified Groomer.*

Commissions for PET

### **PORTRAITS**

in pastel also undertaken.

Make Superb Presents.

(Examples of work can be viewed).

**Tracey Crompton, Greenways,**

Courtlands Lane, Lympstone.

Tel: 01395 272815 / 07973 986 268.



## **CLOCK REPAIRS**

**Terence C. Matthews - Horologist**

- Westminster Chimes
- Wall Clocks
- Grandfather / Grandmother Clocks
- Dial Clocks
- Long Case Clocks
- Carriage Clocks

**Free estimates and house visits**

**Tel: 01395 273563**



## **COMPUTER REPAIRS**

**ELECTRO  
COMPUTERS**

**NO FIX - NO FEE**



**01395 548151 / 07944 051987**

## **Need Assistance In Your Own Home?**

Home help available including:  
housework, laundry, ironing, food  
preparation, shopping,  
administration, collections and  
deliveries and errands.

Please call Mandy on  
07891 678 177.

## **Peter J Acca**

Carpenter/Joiner

Specialist PVCu

Window Repairs

Replacement double glazed sealed  
units

**01395 279209**

**07801365097**

Let me make your old windows  
like new

## **IAN L MOIR**

### **PROPERTY MAINTENANCE**

Painting, decorating, pressure washing,  
window and gutter cleaning, fencing,  
decking and much more. All jobs to keep  
your property in tip top condition.

I am Lympstone based and offer free no  
obligation quotes.

Contact Ian on (home) 01395 263 716

Mobile 07702 804537

**ELITE CARPENTRY &  
BUILDERS**

All aspects of carpentry and building works including fencing and decking  
Undertaken to the highest standard  
Fully insured references available  
Call Daniel for free quotation or advice  
Tel 07872 018482 or 07886 500081

***Comfy casa near the Costa  
Blanca, Spain***

Peaceful, two-bedroomed home. Roof terrace, gorgeous views, communal pool and tennis. Beaches, cycling, golf, hiking and more. Suits all ages.  
Flights from Exeter & Bristol

**Lympstone residents 15% discount**

Tel: 07986 607610 or  
see website for details:  
**[www.algorfaholiday.com](http://www.algorfaholiday.com)**

**FOOD WITH FLAIR  
CATERING**

Small and Large Events -  
Menus to Suit your Budget  
Telephone Shirley or Michael  
on **265147** or see our Website  
**[www.foodwithflair.co.uk](http://www.foodwithflair.co.uk)**

**ELECTRICIAN**

Specialising in domestic work;  
happy to do small jobs.

Call Simon on: 07985 963075

**SUMMER HOLIDAY**

Why go abroad when one of  
Cornwall's finest surfing beaches  
is under 2 hours away!

**Static home close to Polzeath beach,**  
2 bedrooms (1 double, 1 twin)

Mains H & C

Shower room with flush toilet  
Fridge, gas cooker, . Colour TV/DVD.

**For further details call 01626 333539**

# PROPERTIES WANTED!

A continued increase in bookings means we are looking for more holiday letting properties to add to our portfolio:



EATON-TERRY CLARK  
EXMOUTH HOLIDAYS

HELPING TO MANAGE YOUR PROPERTY MORE EFFICIENTLY

HOLIDAY LETS

RESIDENTIAL LETS

BLOCK MANAGEMENT

Tel: 01395 269955 Email: [info@exmouthholidays.co.uk](mailto:info@exmouthholidays.co.uk)

[www.exmouthholidays.co.uk](http://www.exmouthholidays.co.uk)

Members of ARLA and ARMA



## DustAway

**All Work and no play, we are here to help**

Friendly Efficient Cleaning Service

Lympstone Based

Weekly, fortnightly, monthly

One off cleans ie moving house, holiday lets,

End of tenancy cleans, just redecorated or a spring clean

We also offer an ironing service

All materials supplied. Fully insured

Please call

Tracey 07727168817 or Jill 07818484864

[www.dustaway-cleaning.co.uk](http://www.dustaway-cleaning.co.uk)

## SMALL ADS

---

### **LYMPSTONE GREETING CARDS AND POSTCARDS**

Scenic photographs of your village - from the harbour, pretty corner, and washing- lines...to sunsets! Available from Post Office or Frances Longhurst 263495

### **REGISTERED HOMEOPATH**

Libby Clapham BA, RSHom; Safe, eco-friendly, non-addictive; wide range of conditions; safe with conventional medicines; allergy testing. Clinics Exmouth and Exeter. libbyclapham naturalhealth .co.uk; tel 01395 267432

**PICTURE FRAMING.** For all your framing requirements; also frame restoration & chair caning. Caro Ambridge 01392 877460, Topsham.

**DAWN 'TIL DUSK**  
Creative Gardening service  
Routine maintenance, Designs & Creates. 0786 6566 883  
[dawnc@live.co.uk](mailto:dawnc@live.co.uk)

### **FOOT HEALTH PRACTITIONER**

- Lindsey Waddell MAFHP. Nail Cutting and Treatment of Corns, Callus and Verrucas. Home Visits. 01395 263496

---

### **SIMON QUICK THE LOG MAN**

For all your log, coal, kindling & gas supplies Tel 01395 267490

### **LADYBIRD GARDEN SERVICES**

Your eco-friendly gardeners from Lymptone for all your gardening needs. Reasonable rates. Telephone Annie on 01395 275673/07814510760

---

### **PIANO with a VIEW**

Lessons for all ages, beginners and improvers, "purely for pleasure" and ABRSM exams to Grade 8. Theory to Grade 5. Tel: Judy Joss (BA Mus, Dip Ed) on 222749

### **MATHS TUITION**

Experienced tutor available to teach primary to GCSE level maths. Reasonable rates Tel: Jane Moffatt on 279952

## **ACCOMMODATION**

### **WITHALL'S HOUSE BED AND**

**BREAKFAST.** A modern and spacious home close to the heart of the village. Ample parking and flexible accommodation. Call Pete and Jan Hardy on 01395 270157 Or visit [www.lympstonebedandbreakfast.co.uk](http://www.lympstonebedandbreakfast.co.uk)

**CYGNET COTTAGE** – 3 Bedrooms, close to water, £70 a night, minimum 2 nights Call Chris or Judy Carter on 01395274104 or email to [chrisarterathome@hotmail.com](mailto:chrisarterathome@hotmail.com)

**Advertise here for just 60p a line**

## WHAT'S ON

### FEBRUARY

**10** Architect in church 9.30am  
**10** Taize Service 5pm  
**13** Garden Club  
**16** Mobile library  
**17 & 26** Fairtrade  
**18** Parish Council meeting  
**18** Church lent lunches begin  
**19** Paper Moon  
**21** Art talk  
**21** WI Lympstone Lunch  
**26** Heathfield allotment trustees

### MARCH

**2** Quiz  
**4** Parish Council meeting  
**6** Pure Colour using acrylics  
**6** WI meeting  
**8** Double Indemnity  
**9** Parish Dinner  
**16** Cream tea

---

Photocopied at cost by: **Optima Graphics**



**Litho and Silk Screen Printers**  
For an efficient and friendly service

**Tel: 01392 873822**

**Fax: 01392 875760**

**Email: [john@optimagraphics.co.uk](mailto:john@optimagraphics.co.uk)**

**Website: [www.optimagraphics.co.uk](http://www.optimagraphics.co.uk)**

**20b High St, Topsham, Exeter, Devon, EX3 0EA**