

THE LYMPSTONE HERALD

Nov 2014

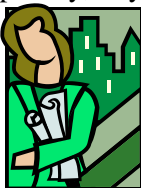
Volume 38, No 3

50p
where
sold



NEWS FROM THE PARISH COUNCIL

Neighbourhood Plan. Hopefully, by now, this has moved from EDDC to a Planning Inspector. He has indicated that he will deal with the Neighbourhood Plan by



examining the written evidence rather than holding a Public Inquiry. This is good news as it should help to move things along at a timely pace. The Village Neighbourhood Plan Group, led by Cllr Jenny Clark is now starting to think about the referendum and then publicising The Plan when it has been finally approved.

The Group is also starting to look at an Action Plan to achieve the Community policies that are identified in the Limpstone Neighbourhood Plan. If you would like to find out more or offer help please contact Jenny on Tel; 274292.

A Defibrillator for the Village. The Parish Council is acting on a request by Lucinda Telfer to provide a public access defibrillator for the Village. Lucinda has been asked to make application to the British Heart Foundation for a subsidised machine

and a similar application is to be made by the Village Hall Management Committee. The Friends of Limpstone Surgery have offered a contribution towards the cost of each one and for its part the Parish Council have gratefully accepted this. The new owners of the Village Shop have agreed that this can be fixed on the wall outside the shop and they will provide a power supply for it. The Parish Council is to put on a 1st Aid course which will include a module on using the Defibrillator, for anyone who is interested.

12 places will be available and preference will be given to businesses around the Shop and people living nearby as they are the most likely ones to be called upon to use it. There will be a nominal charge of £5.00 per head. The equipment is very simple to use and does not require specialist knowledge or training. More details will be published when the equipment is available.



Grants from the Parish Council . The Parish Council has approved the following grants:

Limpstone Young Persons Society – £600 for the purchase of inflatable suits-

1st Limpstone Scouts – purchase of tools for woodsman training

Lympstone Garden Club – waiver of hire charge for portable staging
Exmouth & Honiton CAB – IT update-£250

Ring & Ride (This is an annual contribution) - £250

Lympstone Tennis Club £100 towards the cost of a scoreboard.

Lympstone Pre-School Committee members, Emma Winter, Claire Whiter and Vicki Drinkwater came to the Parish Council meeting to



present an exciting idea for a permanent structure for the Pre-School. This will be on the site of their existing facilities but will mean that the pre-School will be self-contained and will have space for exhibitions etc of the work of children who attend. This could be a major step in achieving an 'Excellent' status from Ofsted. This move will also free-up the Function Room during the day for other Village activities and events. The Parish Council fully supported the idea of creating another permanent community asset for the Village.



Development at
Goodmores Farm –
Architects are arranging a public

exhibition from 4.00 – 8.00pm on 18th November 2014 to give early ideas for the development of 150 houses on land in this area. The venue has yet to be announced. This is a major development and some of it is on land in the Parish of Lympstone so it is vital that the planning implications are given full consideration from a Lympstone point of view.

Cllr Mrs Terri Scott has now resigned as a Parish Councillor as she and her husband are taking a sabbatical volunteering in Malawi.

Terri's contributions to the Parish and Parish Council will be sorely missed but Terri is leaving on a high note due to her success in leading the Parish through a very successful entry in the Best Kept Village Competition. Terri has also been able to bring new volunteers on-board to continue with the Competition next year.

I am sure that all who know her will wish her similar success in her new venture.

*Clerk to the Council: A J Le Riche,
DMS, 43 Salisbury Road, Exmouth,
EX8 1SL, 279665/ 07866 535580
clerk@lympstone.org*

Editor: Chris Carter, Tel 274104. Copy editor – P Acca Deputy Editor – Terri Scott

Advertising - Liz Griffith: Lympstone web site – www.lympstone.org

Copy deadline for the next issue – Tuesday Nov 4th, 10am

Copy by e-mail, if possible to chriscarterathome@hotmail.com

The Editor at Hillcrest, Greenhill Ave, Lympstone, EX8 5HW

Distribution by the Telfers, Tel 272275 and other

PARISH CHURCH

CHURCH RE-ORDERING. A message from the Rector Rev'd James Hutchings. The Parochial Church Council is pleased to report the progress of plans for re-ordering work. The agreed final plans are on display in church.

We are now seeking detailed costings from potential contractors. We will shortly send the plans to the various conservation and planning bodies (consultation with them is a compulsory part of the process). When the quotes are received and approved by the PCC, we will submit the plans to the diocese (the "Diocesan Advisory Committee" or DAC for short) to consider. So by finalising plans after a long process of consultation and discussion, we have reached one milestone! The next stage will take several more months and therefore the work, if and when approved with a faculty from the diocesan chancellor, will not take place until well into 2015. Please speak to John Lupton, myself or one of the churchwardens if you would like any further details.

CHRISTMAS CARDS The church has produced some beautiful Christmas cards showing scenes from the colourful nativity stained glass window in the church. There are 2 designs and the cards are blank inside so that you can write your own message. They come in packs of 5 and cost £2.50 per

pack. All profit goes to church funds. They are on sale in Lymestone Newsagents, and are also available from Jill Wilson (264753). Jill will have them available for sale in church on most Sundays. We hope you will enjoy supporting this new venture.

OPERATION CHRISTMAS CHILD: Would you like to bring

a smile to the face of a poor or orphaned child this Christmas? In collaboration with the school, we will be running the 'Shoebbox appeal' again this year. All you have to do is fill (and wrap and label) a shoebox with items suitable for a girl or boy aged 2-4, 5-9 or 10-14, and bring it to church by Sunday 9th November. Leaflets answering all your questions are available at the back of the church. Last year, we collected an amazing 87 shoeboxes for children in Eastern Europe – can we do better this year? For more info, see Demelza, Tel 272243.



REMEMBRANCE

SUNDAY – 9th

November – service

begins at 10.00 a.m. with a slightly shorter service



to enable us to be outside at 10.50 am. There will be a short order of service by the War Memorial where others from the village usually join us. All are most welcome and orders of service will be handed out. A cup of hot chocolate will be available to all in the church after the service.

QUIET PRAYER TIME: Our next gathering is on Monday 10th November at 9.30am. We are open to everyone, so do please join us if you can for half an hour of prayer, Bible readings and quiet contemplation. For your diaries, our Advent Quiet Hour will take place on Monday 8th December from 9.30-10.30am. For more information, or just a chat, please ring Demelza on 272243.

SOCIAL EVENT AT LITTLEHAM
Saturday 15th November – Littleham Community Centre – Mission Community Social Event – Cabaret performed by an international group visiting from Lee Abbey Community – 6.30 to 9.00 pm - £3 per ticket to include cider/soft drink, pasties & ice cream – vegetarian option available. Tickets on sale now from Mary Blair.

MISSION COMMUNITY SERVICE
This special service unites the three parishes and this time will be in Lymptstone on 16th November at 10am. Because of this service the next family service will be held the following week on the 23rd November.

MORNING WORSHIP As explained above this all age family service will be on the fourth Sunday this month at 10 with coffee from 9.30am. This service is non Eucharist and with the worship band accompanying the singing. All are welcome to attend.

CHRISTMAS BPPK EXHIBITION
On Sunday 7th December before and after the Family Eucharist there will be the opportunity to see books and gifts

from 'Pathfinder' the new Christian bookshop which has opened on the Strand in Exmouth. The books and Traidcraft goods will be on sale from 9.30 until the service begins at 10 and then after the service from 11 onwards until midday. All welcome to come and have a look. Any other information from June Dingle, Parish Church

Brian Mather

FRIENDS OF THE CHURCH

The lucky £25 winner of the October draw of the Friends of the Church monthly lottery is Mary Truell.

Clive Wilson

PS A big thank you to the nearly 60 people who came to our Curry Lunch on 26 October which raised around £400 towards our work to maintain the fabric of the Church.

Clive Wilson

MOBILE LIBRARY

Dec 5th
Meadow Close 10:15 - 10:35
Village car park 10:45 - 11:45

Diana Letcher



FROM THE EDITOR

MERRY CHRISTMAS AND A HAPPY NEW YEAR FROM ALL OUR CONTRIBUTORS

Contributors, please note that Christmas is in December not November and as usual our Herald will be published in December.

HELP

I am looking for help in preparing this Herald. Could you spare a few hours at the beginning of each month to retype or edit some of the items I get sent every month? Occasionally this also means phoning contributors to check on the source of information so a good telephone manner is important.

Chris Carter, Editor

RYA DAY SKIPPER COURSE

Lympstone Sailing Club is considering running the RYA shore based Day Skipper Course if we have sufficient people interested. Details of the course syllabus can be found on the RYA website. We would run the course over 5 weekend days, (3 single weekend days and one full weekend) during January and February. Cost for the course would be around £250. Please email me if you are

interested in finding out more or would like to attend.

judith_carter@hotmail.com

FRIENDS OF UNDERHILL SURGERY CHRISTMAS/NEW YEAR DATES



Please note that our last trips in 2014 will be on Monday 22 December and will restart Monday 5 January 2015. The members of FUS all are fellow residents of Lympstone Parish who require transport to and from surgery and hospital appointments. This is a door to door service and drivers are not expected to accompany clients onto wards or into appointments. Trips are arranged with drivers via our co-ordinator and there is a mileage allowance. In the period April 2013 to March 2014, 235 journeys were made. For many of us who do not live near our parents, grandparents, aunts or uncles we would consider a scheme like this a valuable service if we were unable to take our loved ones to their appointments. If you could spare occasional time during the month to join our team of drivers please contact Underhill Surgery or our co-ordinator Gillian Hipkins on 224442 or gillianhipkins@hotmail.com.

M. Wheeler

CON SPIRITO?

What or who is that? It's a cappella singing – no instruments, just human voices – by a choir of that name. And as their name suggests, they sing in a spirited and lively manner! At the invitation of the Friends of the Church, Con Spirito are giving a concert covering a wide and entertaining repertoire in the Church on Friday 21 November, starting at 7.30 pm.

Tickets are £7.50, which includes a glass of wine and mince pie, and are available now from the village Newsagents or on the door on performance night.

Clive Wilson

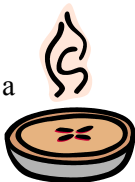
COFFEE MORNING

In aid of Children's Hospice Southwest

You are invited to a coffee morning and sale at the Methodist Church on 15th November from 10 'til 12. There will be cakes, books, bric a brac and CHSW Christmas cards for sale.

Come along with your friends to help raise much needed funds for this admirable charity.

Sally Burton



GET YOUR KNOTWEED UNDER CONTROL OR FACE £2,500 FINE

Homeowners who fail to control Japanese Knotweed in their gardens could be fined up to £2,500 under new rules. The plant, which can grow almost 12 inches in a week, has been listed by the Home Office in anti-social guidance alongside Himalayan Balsam and Giant Hogweed.

ED The Knowledge

LYMPSTONE GARDEN CLUB



With the nights drawing in, Lymestone Garden Club is turning its attention to winter in the garden. At the next meeting on Wednesday 26 November in the Village Hall Function Room at 7.30pm, a short AGM will be followed by an illustrated talk by Sheila Parker on 'Winter Interest in the Garden'.

Everyone is welcome, and it's £3 on the door, with no membership fee. There'll be a free glass of wine or soft drink and nibbles, and the chance to catch up with green-fingered friends. Plants and locally made preserves will be on sale.

And if you need a different idea for Christmas presents, tickets for the Toby Buckland talk on Saturday 7 March 2015 will also be available. If you can't make the evening, then do contact Suki on 269989 for more details.

At the AGM, Viv Day will be standing down as Chair of the club. We're sure you'd like to join us in thanking her for all the hard work, wise words and enthusiasm she has brought to the role. News from the Garden Club is sent out regularly by email. If we don't have your details and you'd like to be kept up to date with what's coming up then do send your name and email address to suki.commin@googlemail.com We'll be delighted to add you to our email list for reminders and updates, and any new events and outings.

You'll also find more information about the club and forthcoming events at www.lympstone.org

Gail McKenzie

SILVER LINE

We need volunteers
Volunteers are vital to the Silver Line's ability to achieve our aim of reducing loneliness and improving the lives of older people. They are our link to communities and older people across the UK, as well as providing our organisation with invaluable skills and capacity to help us make a difference. We hope that many of our callers will volunteer to become Silver Line Friends.

What is a Silver Line Friend?

Silver Line Friends are volunteers who enjoy offering friendship to older people. Silver Line Telephone



Friends offer a befriending service to older people, calling an older person once a week to check they are ok and to have a chat. Silver Line Letter Friends offer a befriending service to older people through written word, exchanging regular letters and correspondence. We match older people to like-minded volunteers. It is not a counseling service and Silver Line Friends will not ever meet or know the address of the people they speak to.

Who can be a Silver Line Friend?

Anyone who likes people, especially older people, and who would enjoy having a friendly conversation on a regular basis with someone, who may share your interests. For telephone befriending, you need to be able to access the internet (i.e. browse to a web page) and have a UK land-line telephone number.

Where are volunteers based?

Calls are managed through a 'virtual call centre' and so can be made from home or from an office space. All befriending calls made, and befriending post sent by our Silver Line Friends are paid for by the charity.

Call 0800 4708090 to access the service or 02072242020 or info@thesilverline.org.uk to find out more about being a volunteer.

Above copied from Silverline web site – Ed (*Brought to the Parish Council meeting by Kathy Rogers*)

WORKSHOP - THE DYNAMIC OF DRAWING



On Wednesday 26th November from 10am to 4pm Lympstone Art Group are running a workshop on Drawing and Perspective. It will be run by Peter Reid and will be about drawing and how to make perspective work, taking the fear out of the process making it achievable and fun. We will sketch outside if the weather is good. Peter is a local photographer and artist and has taught Art for many years. Cost £30. If you are interested in attending email judith_carter@hotmail.com or phone 274104

Judith Carter

LYMPSTONE CONVENIENCE STORE



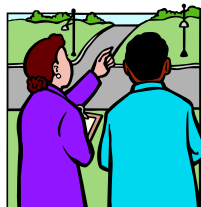
Central Convenience Stores would like to thank you for the fantastic support you have given in the six weeks since acquiring the store.

After difficult and worrying times for all within the village and store it is wonderful to have your support and with Central Convenience Stores having over 30 stores all in the South West we are able to offer a great range of products and many special offers.

We will be holding a special event on Wednesday 12th of November from 5 until 8pm and we would love to see you. There will be an opportunity to meet us, tell us what you think or what you would like and sample wines, beers, hot food, bakery and much more. We hope we will see you before the 12th, if so, don't forget to pick up our leaflet and enter the prize draw to be held at our special event and give yourself a chance win a flat screen TV. Many villagers have told us how important the store is not only for the convenience but as a real asset to the community. Come and see us, cut down on those trips to the big stores, enjoy buying just what you need rather than worrying if you have everything. We are here to help from 6am to 10pm every day for all our services including the Post Office.

Sandra Clark and all the team
01395 263655

BEST KEPT VILLAGE COMPETITION 2015



Following Lympstone's success as "runner-up" in the Devon-wide entry category, we will be "going for gold" next year and will enter the "large village" category.

So how can you help? Community Busy Bee mornings will be arranged after Christmas to tidy up target areas.

However, in the meantime, let's make a collective effort to clean up our telegraph poles. Please remove old staples and only use drawing pins or string to secure posters. Many hands make light work!

Greg Crum & Sharon Wayland (BKV Co-ordinators 2015) Tel: 275441

*Tel: 01395 274551 or 07808 862694
Skype: sharon.wayland*

POLICE

Exmouth Rural Neighbourhood Police team revisited the Lympstone Sailing Club on the 18th October to carry out further property marking on residents sailing equipment and property. A further 22 pieces of equipment were marked up by the Police during the event. This sends a clear message to thieves that residents are working in partnership with the Police to prevent crime and to protect their property.

Exmouth Police Station Front Office is now closed to the public from the 1st November. We no longer have Station Enquiry Officers, however the station is still manned by Frontline officers and Neighbourhood Policing teams 24 hours a day. We will continue to respond to calls. You can contact Police via the 101 system (999 in an emergency) or via the Devon and

Cornwall Police website. Any property lost or found can be reported via the Devon and Cornwall police website by clicking on the "report my loss" link. Please visit www.devon-cornwall.police.uk for more information.

Autumn has now arrived and the nights are drawing in so I would like to remind all residents to take the necessary precautions when cycling/walking in poor light. Be safe be seen – bright fluorescent/reflective clothes, carry a torch and make sure that all your lights are in full working order for bikes. Remember our rural roads have far higher accident records than major arterial roads

*PCSO Sarah Trayhurn 30110
Emergency 999 Enquiries 101
sarah.trayhurn@devonandcornwall.pnn.police.uk*

ANNUAL CHRISTMAS ARTS & CRAFTS SHOWCASE

This year is on 22nd and 23rd November. We will be open from 11am until 5pm at Brook End Studios, Harefield Cottages, Lympstone (down the lane by the newsagents). As always, we are supporting local talent in the village. Lots of handmade Christmas Cards and goodies to choose from! Hope to see you there.

Lin Holdridge

LYMPSTONE QUILT GROUP

..... invite you to come and see what we are up to. Come and enjoy a cuppa, a piece of cake and a chat. Maybe buy a Christmas present, card, wall hanging, bunting or a bag. We will be selling raffle tickets for a lovely bed size quilt in aid of Breast Cancer Research UK
The Methodist Hall, Friday 21 November; 10 – 12.



Sally Harradine

PLAYERS SOCIAL EVENING -- THE GLOBE

As heralded in , er , last month's Herald (see 'Not Enough Drama in Your Life') the Players had a social evening in the Globe on 26 October. We particularly encouraged anyone who might be interested in finding out about what we do to come along and we were pleased to meet quite a few new faces. And everyone had an enjoyable evening too! So much so that we shall be repeating the occasion this month on Sunday 30 November and look forward to seeing Players and non-Players then -- from 7.30 pm in the Globe



One of the Players regular activities is a monthly play reading, usually in a member's house. These are advertised to our members, not publicly. However we are always happy to welcome non-members who would like to give it a try - and there is no obligation to read if you would rather not. So if you might be interested do please let me know. Our next reading is Sunday 23 November, starting at 3.00pm.

*Clive Wilson (Chairman) 264753;
clivewilson264@gmail.com*

LYMPSTONE ENTERTAINMENTS VILLAGE CONCERT SATURDAY 28 FEBRUARY 2015



New to the Village? Never heard of the 'Village Concert? Read on. The Village Concert is the occasion when the Village entertains itself, a neo pagan ritual of self-examination and flagellation... and that is just the audience. Fast moving, post-post modern, the Village Concert is all you can imagine in your wildest dreams about Village life and there are only 20 weeks left to plan ways in which you may be able to contribute.

The date of the concert will be Saturday 28 February with a technical rehearsal on Friday 27 February. Following the successful introduction of a matinee performance at 3pm, evening performance starts 7.30pm.



We are always looking for new acts – clowns, dancers, actors, storytellers, jugglers, magicians, tumblers, and musicians of all shapes and disguises...for contributions that reflect the wide variety of talent in the village including grouping our more experienced entertainers in different ways, or with new and perhaps not so confident contributors. Can you help us to identify new talent including newcomers to the village who may be just waiting to be asked to join in?

One of our successes has been the



contribution of village groups...the Floodgate Wardens, the Station Adopters, the Sailing Club, the Calendar Girls, Historic Houses Group, the Parish Council...a way of persuading many people onto the stage who had never suspected they had such talent! Do you belong to a group that might be persuaded to perform in 2015?

THE RULES OF ENGAGEMENT! (1)
Acts are between three and five

minutes long. (2) Once again we do not plan to use amplification but rely on your natural talent! We need to build a balanced programme so Grace Packman and I will be glad to discuss the way you may like to contribute and how it will fit in
Johnwelton68@gmail.com

John Welton 01395 271915. Grace Packman

LYMPSTONE SCHOOL AND PTFA CHRISTMAS FAIR

Please come along to the Lympstone School and PTFA Christmas Fair on Sunday 30th November, 12pm - 3pm at Lympstone Primary School! Entrance is free and there will be a bar and BBQ, craft stalls, lots of games for the children, raffles, competitions, prizes and a lot of fun! There will also be a very special guest taking up residence in a well appointed grotto! Tickets to visit Father Christmas are pre-bookable, so please book a slot in the week before the fair in the school playground after school. We hope you will come along to have fun and to support your local school!



Suzie Creighton

LYMPSTONE FURRY DANCE CHRISTMAS EVENT - SATURDAY 6TH DECEMBER



The Friends of Lypstone Furry Dance are holding their Annual Mulled Wine and Mince Pie Morning with Santa and the South West Comms Training Band at the Globe Inn. Doors open at 1030 am, shortly followed by the arrival of Santa. Be there to welcome him as the snow falls outside in a snowy winter wonderland. Sit by the log fire and enjoy festive music by the band. Chance your luck in our seasonal prize draw and fun tombola. Bring your children to meet Santa in his special grotto. Entrance on the day £2.50, including mulled wine or coffee and a mince pie, plus a free soft drink and biscuit for children. Visit to Santa and Christmas present. £1 per child. Come along and join in the festive fun from 1030 to 1230.

Chris Doak.

NOVEMBER FILMS



The Friday film this month is *Captain Phillips*, on 14th November at the Village Hall. Screening starts at 19.30; bar from 18.45. The film is closely based on the hijack of an American cargo ship off Somalia. Tense drama with Tom Hanks. Free to Film Society

members; £5 on the door for visitors. The Tuesday Matinee on November 25th is *Written on the Wind*, with Rock Hudson and Lauren Bacall. Film starts at 14.15 in the Methodist Hall. £3.50 including tea and biscuits.

Don Mildenhall

FURRY DANCE 2014



The committee has now held its first meeting to consider feedback on this year's event. Generally the feedback has been very positive. Most comments received supported the new format and we have also received some helpful suggestions to improve the event next year. We are still keen to hear of any other ideas or comments you may have so please contact any member of the committee to put these forward. We were pleased to note that the Dog Show entries increased this year and we also had increased entries in the Fancy Dress competition with the new group class proving popular.

Once again we wish to thank our generous sponsors, our hard working support team and of course the stall holders and all the other helpers too numerous to mention. Special thanks must also go to the SW Comms Band who made a major contribution to the day's



fun including their impromptu mini concert at The Saddlers Arms, much enjoyed by the exhausted dancers and the spectators at the top end of the village.

Chris Doak

HARPS, ANGELS AND FESTIVE FOOD



See in advent with festive music, mulled wine and home-made mince pies. Be enticed by the angelic tones of Harpe Noir, Devon-based harp duo Emma Graham and Liz Grier, who will play a programme of seasonal music in Lymptone Church on Saturday, 29 November at 7.30. Tickets are £10 (£1 children), to include mulled wine and mince pies, from the Lymptone Entertainments Box Office c/o 2 Brookfield Cottages, (opposite the Lymptone Newsagent), telephone 01395 272243 or 07516322853.

Grace Packman

VILLAGE WEB SITE



Any updated information please contact Update@lympstone.org or call 01395 489506 *Mark Reynolds*

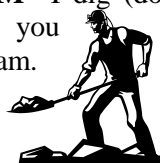
NOTICE TO CONTRIBUTORS TO THE LYMPSTONE HERALD

Whilst we understand the attraction of cheap mobile devices, the articles written on them and sent for publication often are incompatible with standard software. As a result the articles sent to us are frequently corrupted either in transmission or printing. Couple this with messages which are mis-typed or contain 'special characters' eg *emoticons* which are unprintable by a high-speed printer and we hope you understand why we sometimes have to return corrupted messages to their author(s).

This is particularly unfortunate for those items which are sent to us on or close to the deadline for any particular issue when we may not have time to sort out such problems (Like these silly dotted lines).

The editors

DIGGING FOR OXFAM I dig (do gardening jobs). What you pay me goes to Oxfam. 01395-276569



Jenny Moon

DISCLAIMER This news letter is compiled from emails sent to the editor by numerous people and very little of the information is checked before publishing which is done in good faith!

.....
Chris Carter

BADLY PLACED SIGNS



NOT-SO-ATTRACTIVE LYMPSTONE

Photos all taken on the afternoon of Wednesday the fifth of November 2014



Oh – and I missed the bins and the dog poo. Ed

LYMPSTONE WI

The women of Lympstone WI had something to celebrate at our meeting on Wednesday the 5th November – our 95th birthday! Although slightly younger than the Women's Institute itself, which will celebrate its centenary next year, we nevertheless marked the occasion by tucking into a delicious cake made by our President, Diana de la Rue.

Continuing the food theme, our speaker was Mrs Susan Champion, who came along to tell us about Oakhouse Foods, which supplies and delivers frozen ready meals (and some groceries) to clients throughout Devon, Cornwall, and most of Somerset. Susan explained that the company, which has been running for over 15 years, offers a personal service and takes great care to ensure the nutritional value of their food as well as offering meals for special diets. She had brought along some samples for us to try, so that we could see for ourselves how good they tasted.

Once we had filled up on birthday cake and Oakhouse samples, we heard from our Vice President, Bobby Brunt, about her excellent day out at Barnstaple for the WI Autumn Council meeting, which was held on Wednesday the 15th October with Miranda Restovnikoff as the Guest Speaker. We also heard about the proposed move of Devon WI Headquarters from a house in Heavitree

to a bungalow in Clyst Honiton, which, although smaller, is disabled friendly and has better parking facilities.

Our final litter pick of the year will start at 2.15 on Wednesday the 26th November. The previous litter pick, which was held in the re-scheduled morning slot on the 21st October, was apparently quickly over, as the high winds seemed to have dispersed most of the litter from the village.

Our next – and final – meeting of the year will be our Christmas meeting, held in the Main Hall of the Village Hall at 2.30 on Wednesday the 3rd December. Everyone is asked to dress festively and bring a dish to share and a bran-tub gift. The Estuary Group Carol Service will be at Glenorchy Church, in Exmouth, at 2.30 on Wednesday the 10th December, and the County Carol Service in Exeter Cathedral is due to take place on 2nd December at 2.15 pm. Our members are also invited to what promises to be a truly wonderful Christmas Tree Festival in Clyst St Mary Church, running from the 5th to the 7th December.

We are very pleased to welcome anyone who thinks she might be interested in finding out about the Lympstone WI. For more information please phone Diana de la Rue on 01395 274099 or find us on the village website.

Lindy Newton

Redwing



The REDWING

Wishes you all a Merry Christmas
and a Happy New Year

Seasonal Opening Times

Christmas Eve Open for Lunch & Dinner

Christmas Day, Boxing Day & 27th Closed

28th, 29th, 30th, 31st, Open for Lunch & Dinner

New Year's Day Open for Lunch and Closed at 4:30

01395 222156

www.redwingbar-dining.co.uk

CELEBRATING OUR FIRST ANNIVERSARY!


ZUMBA® AT LYMPSTONE YOUTH HUT

Fun, friendly fitness class, suits all abilities!

Weds 9.20 – 10.20am. £4.50/£5 drop in

Contact Susan on 07583 242719 or




susanmason99@hotmail.co.uk



East of **EXE**

Exceptional Estate Agents

**for East Devon,
Topsham and Exeter**

www.eastofexe.co.uk **01392 877240**

NEED A HAND AT HOME?

Sarah can help! Home help/cleaning/ironing/shopping/dog walking/light gardening.

07791 944938 Refs available.

DBS checked

FRENCH HOLIDAY LET, Vendee: overlooking golf course and only 10 mins drive from superb beach. 3 bedrooms, 2 bathrooms, communal swimming pool and tennis courts. From just £350 per week. Tel 01395 272032 or email: annhurley1@sky.com

CYGNET COTTAGE - Quiet self-catering cottage just yards from the foreshore. Sleeps 3/4. From £70 per night. Visit www.cygnetcottage.net, or ring Demelza on (01395) 272243.

JEFF CROMPTON

Greenways, Courtlands Lane,
Lymestone

For Superior Quality Home
Improvements and All Types
of Building Work including
Kitchens & Bathrooms

Tel: 01395 272815

Mobile: 07768 282 129

EXE-GAS

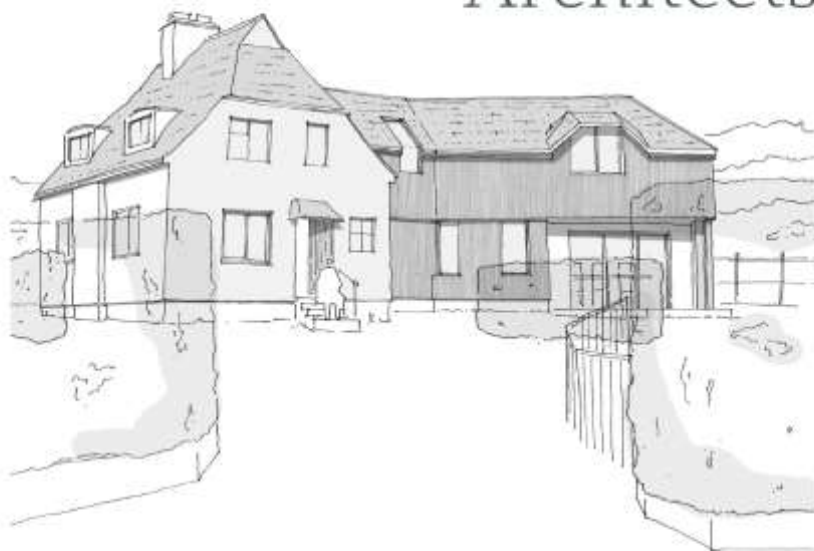


Plumbing & Heating
Boiler breakdown & service
New installations
Fires & cookers fitted & serviced
LPG systems
Plumbing
Home. 01392 877345
Mobile. 0787 1621157

Qualified Bookkeeper

available for bookkeeping
work, year end accounts,
self assessment, VAT
returns. Tel 01395 263280

Hilton Barnfield Architects



We offer a personal, creative and professional design service for your project.

- Design expertise
- Planning applications
- Building Regulations documentation
- Detailed drawings
- Construction co-ordination

Call for a **free initial consultation:**

01395 224 829

www.hiltonbarnfield.co.uk



**COMPUTER
REPAIRS**

**ELECTRO
COMPUTERS**

NO FIX - NO FEE

01395 548151 / 07944 051987



PETER J ACCA
Property Maintenance
PVCU WINDOW REPAIR SPECIALIST
Replacement Double Glazed Units

thesccas@yahoo.co.uk
07801365097
01395489791
53 Evergreen Close
Exmouth EX8 4RR



PROPERTY MAINTENANCE –

James Waddell Interior & Exterior,
Carpentry, Flooring, Fencing &
Gates, Plumbing, Decking,
Bathrooms & Kitchens, General
Repairs. Free advice & Estimates.
01395 263496

SIMON QUICK THE LOG MAN

For all your log, coal, kindling & gas
supplies Tel 01395 267490

*Adverts cost 60p a line or £12 to £15 a
box or £90 a page (with reductions on
runs).*

COUNSELLING THERAPY

Jenni Gates MA, Adv Dip Couns,
MBACP. 07565 288004 Email
jennigatestherapy@gmail.com.
www.jennigatestherapy.co.uk

DOG GROOMING

Kind & Qualified Groomer.
Commissions for PET
PORTRAITS
in pastel also undertaken.
Make Superb Presents.
(Examples of work can be viewed).
Tracey Crompton, Greenways,
Courtlands Lane, Lymptstone.
Tel: 01395 272815 /07973 986 268.



EXE VALLEY FUELS

Traditional Coal Merchants

- Supplying quality coal and smokeless fuels
 - Stockist of bottled gas
 - Regular deliveries in your area
- 01392 841464

Email: exevalleyfuels@btconnect.com

Website: exevalleyfuels.co.uk

CLOCK REPAIRS

Terence C. Matthews - Horologist
Westminster Chimes
Wall Clocks
Grandfather / Grandmother Clocks
Dial Clocks



Long Case Clocks
Carriage Clocks
Free estimates and house visits
Tel: 01395 273563

Find some winter sunshine!
Comfy casa near the Costa Blanca, Spain

Peaceful, two-bedroomed home. Roof terrace, gorgeous views, communal pool and tennis. Beaches, cycling, golf, hiking and more. Suits all ages.
Flights from Exeter & Bristol

Lymptstone residents 15% discount
Tel: 07986 607610
www.algorfaholiday.com

FOOD WITH FLAIR CATERING

Small and Large Events -
Menus to Suit your Budget
Telephone Shirley or Michael
on 265147 or see our Website
www.foodwithflair.co.uk



WALK IN's AND EVERYBODY WELCOME !
Perms, Barbering, Shampoo and Sets, Colouring, Highlights, Foils, Massages, Waxing, Geleration Nails, Facials, Makeovers, Tanning and more .**For an appointment call us on 01395 274089 Text only on 07552313653**



DustAway

All Work and no play, we are here to help

Friendly Efficient Cleaning Service

Lympstone Based

Weekly, fortnightly, monthly

One off cleans ie moving house, holiday lets,

End of tenancy cleans, just redecorated or a spring clean

- We also offer an ironing service

All materials supplied. Fully insured

Please call Tracey 07727168817 or Jill 07818484864
www.dustaway-cleaning.co.uk

LASH EXTENSIONS by Cara de ella for your Christmas and New year parties! Treat yourself to beautiful, natural individual lashes for a special occasion. Call 07736050748 to book. Face Book page 'Make up artist Sadie Slade-Smith'

SMALL ADS

LYMPSTONE GREETING CARDS AND POSTCARDS

Scenic photographs of your village - from the harbour, boats and washing-lines.....to sunsets and Lymptone Life! Available from the Newsagents or Frances Longhurst 263495

PREGNANT? Experience the magic of birth: release fear and tension, remain conscious, deeply relaxed, in control. Hypnobirthing antenatal classes: for more info phone 01392 412767 or see libbyclaphamhypnotherapy.co.uk

PICTURE FRAMING. For all your framing requirements; also frame restoration & chair caning. Caro Ambridge 01392 877460, Topsham.

DAWN 'TIL DUSK

Creative Gardening service Routine maintenance, Designs & Creates. 0786 6566 883 dawnc@live.co.uk

TUTOR AVAILABLE Local experienced Primary School Teacher available to teach Maths and English. Can also prepare children for SATS, Colyton and 11+ exams. Reasonable rates. For more information call Becky on 07806554106 or email: beckychurch@hotmail.co.uk

PIANO with a VIEW Lessons for all ages, beginners and improvers, "purely for pleasure" and ABRSM exams to Grade 8. Theory to Grade 5. Tel: Judy Joss (BA Mus, Dip Ed) on 222749

MATHS TUITION Experienced tutor available to teach primary to GCSE level maths. Reasonable rates Tel: Jane Moffatt on 279952 or **07730877889**

PRISTINE CLEAN - Domestic ironing and cleaning services. Local lady. Call Niki - 01395 740727

FOOT HEALTH PRACTITIONER - Lindsey Waddell MAFHP. Nail Cutting and Treatment of Corns, Callus and Verrucas. Home Visits. 01395 263496

ACCOMMODATION

WITHALL'S HOUSE BED AND BREAKFAST. A modern and spacious home close to the heart of the village. Ample parking and flexible accommodation. Call Pete and Jan Hardy on 01395 488123 Or visit www.lympstonebedandbreakfast.co.uk

WHATS ON

NOVEMBER

8 Pre School Christmas Fayre
9 Shoe Boxes to church
9 Remembrance Sunday
12 Convenience Store Special Event
14 Film – Captain Phillips
15 Coffee Morning
16 Mission Community Service
17 Parish Council
21 Art Group workshop
21 Quilt Group
21 Con Spirito
22-23 Arts & Craft Showcase
25 Film – Written on the Wind
26 Garden Club AGM & Talk

26 Drawing Workshop
29 Harps, Angels & Festive Foods
30 School and PTFA Christmas Fair
30 Players Social Evening

DECEMBER

1 Parish Council
5 Mobile Library
6 Furry Dance Christmas Event
8 Advent Quiet Hour
15 Church Carol Service



Optima Graphics

Topsham Ltd
silk screen, digital & litho printers

*We provide a high quality, good value
and prompt printing service.*

Silk Screen Vinyl Stickers Estate Agent Boards Printing on: Metal, Acrylic, Plastic, Wood	Large Format Digital Banners Display Panels Window Graphics Pull-up Display Stands Magnetic Vehicle signs	Litho Brochures & Leaflets Stationery Labels & Invitations Pads NCR sets
---	---	--

T: 01392 873822
E: sales@optimagraphics.co.uk **W:** www.optimagraphics.co.uk
20b High Street, Topsham, Exeter, Devon EX3 0EA