



THE LYMPSTONE HERALD

Dec 2014

Volume 38, No 4

50p
where
sold



NEWS FROM THE PARISH COUNCIL

The Lymington Neighbourhood Plan has been passed by the Planning Inspector who recommended that it now goes to a public referendum. He has proposed a number of amendments to the text but these do not affect the policies and aims of the Plan. The Plan still needs a 'habitats assessment' which will be prepared by EDDC and they are appointing a Specialist Officer to prepare this for their Local Plan and all the other Neighbourhood Plans that are being considered across East Devon. This post should be filled soon and so it is hoped that a Parish Referendum could be held early in the New Year. The Village Neighbourhood Plan Working Group are proposing three advice sessions to raise awareness of the neighbourhood Plan and the need for a vote in the referendum to show public support. All this will be paid for

using Government money from EDDC and the Community Development Foundation. Details will be announced as soon as they are available.

A Casual Vacancy – Not the amazing novel by J K Rowling but a seat on Lymington Parish Council! The new Councillor will only sit for about 5 months as the next elections are in May 2015 but this will give a taste of Parish Council life. If you are interested, talk to a Parish Councillor and then come along to the next meeting on 15th December 2014 at the Village Hall.

Development off Marley Road – Developers held an exhibition of the proposals to build 150 homes on land off Marley road. (see page 14)

Cont

*Clerk to the Council: A J Le Riche,
DMS, 43 Salisbury Road, Exmouth,
EX8 1SL, 279665/ 07866 535580
clerk@lympstone.org*

Editor: Chris Carter, Tel 274104. Copy Editor – P Acca, Deputy Editor – W. Headeach
Advertising - Liz Griffith: Lymington web site – www.lympstone.org

Copy deadline for the next issue – Tuesday 6th Jan, 10am
Copy by e-mail, if possible to chriscarterathome@hotmail.com
The Editor at Hillcrest, Greenhill Ave, Lymington, EX8 5HW
Distribution by the Telfers, Tel 272275 and others

Cont

Part of this lies in Lympstone Parish so Parish Councillors went along to assess the impact of this. The clerk has the Plans and the Parish Council will be arranging its own exhibition to ensure that residents are fully aware of the proposals. The plans will be on display from 6.30pm on Monday 15 December in the Committee Room at the Village Hall.

Courtlands House- Future owners are arranging an exhibition of their proposals to restore the Georgian mansion and turn it into a luxury Country Hotel and Restaurant. A similar application a few years ago was refused as the main access was down Courtlands Lane which was felt to be inadequate. There is to be a public exhibition of the proposals in the Lympstone Methodist Church at 4.00pm on Monday 8th December 2014. Please go along and have a look at what is being proposed and then make your views known when any planning application is discussed by the Parish Council.

Exe Estuary Trail – Judith Carter is continuing to press DCC for a new route to avoid cyclists coming straight through the Village. DCC are still designing some minor safety improvements but nothing is happening at the moment. Some incidents are being reported via the police 101 number but it seems that some may not be reported as it is difficult to get through on that number. If you have

tried to report an incident but couldn't get through, please let Judith know. Tel 274104. This will help build up the statistics that DCC seem to thrive on.

The Dinan Way link road received publicity in the Exmouth Journal a few weeks ago and so this was a major item for discussion at the Parish Council meeting. The possibility of a link road was first raised in about 1988 when it was said that there should be no new development in Exmouth until this road was in place and the A376 had been improved. Well, there has been a lot of development in Exmouth and the only improvements to the A376 have been traffic lights to help slow down the traffic. Dave Tyrrell and Julie Russell made it clear that motorists from the top of Exmouth want to go north towards Exeter and not westwards to join the traffic queue on the A376 each morning. This road is to be funded by money from developers who want to build hundreds of houses to the north of Exmouth. All of this will affect Lympstone and it is vital that the route does not lead to more unwelcome planning applications.



*Clerk to the Council: A J Le Riche,
DMS, 43 Salisbury Road, Exmouth,
EX8 1SL, 279665/ 07866 535580
clerk@lympstone.org*



PARISH CHURCH

Come and Celebrate Christmas together

15th December, 7pm - The Lymptone Carol service.

21st December, 5pm - Christingle service at Lymptone church. In aid of the work of the Childrens Society

21st December, 6.30pm - Services of 9 Lessons & Carols at Holy Trinity Church and Littleham Church.

The Nativity

Look for posters giving details of the Nativity activity taking place on 23rd December

Christmas Eve - Christingle service at Littleham church. 3pm and 5pm.

4pm Christmas Eve - Crib service at Holy Trinity church.

Christmas Day

11.30pm Christmas Eve. - Christmas Midnight Mass (Holy Communion) in all three churches.

8am Christmas Day. - Said Holy Communion at Holy Trinity church and Lymptone church.

10am Christmas Day. - Sung Eucharist with carols at all three churches.

A Vigil for children and young people past and present who have suffered abuse will be held on Holy Innocents Day, Sunday 28thth December 2014 Lymptone church 12 noon until 3 p.m. Lymptone Church, on behalf of our mission community, is joining with churches across Britain in this vigil, part of how we confront the sexual abuse of children found across all communities.

We wish to bring this darkness before God, asking for his mercy, healing and light. We wish to show solidarity with people who have been affected by sexual abuse as well as challenging perpetrators to stop. We wish to pray for communities and families who are bravely trying to deal with sexual abuse or any kind of abuse.

During the vigil we hope there will be at least one person present as a steward throughout, taking turns in 20 minute slots to be a welcoming presence (stewards are not expected to offer any kind of expertise or counselling, Revd. Sid will be available throughout the vigil; a list of professional agencies' contact details will also be available).

Please put your name down for the 'stewards' rota - It is only for 20 minutes from 12.00 noon to 3.00 p.m. For further information please contact Revd Sid 01395 274512 or email sid.humphries2@btinternet.com

The Church is now celebrating the Advent Season - Advent is the four weeks leading up to Christmas which marks the beginning of the Church's year. The emphasis in Advent is on waiting for the coming of God and so it is a season of hope as we seek to silence the noise of the mind, be still, and wait in expectation.



A Thought for Advent

'Prayer is not our attempt to make contact with God but a sign of our confidence, fragile sometimes, that God is already present, and has always been present, awaiting our invitation to come and be at home in us.' (Timothy Radcliff, OP)

Books and Christmas Gifts

On Sunday 7th Dec. there will be an exhibition of books and other Xmas gift items from the new Christian bookshop in Exmouth. These will be available to purchase before and after the Family Service. Come and get great ideas for stocking-fillers. Traidcraft items also included.

Advent Quiet Hour

9.30-10.30am on

Monday 8th December:

Come and share in an hour of quiet prayer and contemplation as the busy Advent season begins, especially if you belong (or would like to belong) to one of



Lympstone's House Groups. There will be Bible readings, music, prayers and time for reflection - and most importantly coffee and biscuits from 10.30. If you can't get here early, do join us for coffee and a chat from 10.30am!

Brian Mather

GOOD NEWS ON THE NEIGHBOURHOOD PLAN!



The inspector has now finished his review of our plan and has been very complimentary. He has proposed some minor amendments, and these were circulated to Parish Councillors for their views. After a discussion at the Parish Council meeting on Monday 1st December, the council voted in favour of accepting the amendments, meaning that we can now move forward to the next stage.

A referendum will be planned where every Parish elector will have their chance to say whether they wish the plan to become part of the planning process or not.

We intend to hold some question and answer events throughout the village in the New Year and an information leaflet will be circulated to each household at the appropriate time.

Jenny Clark (merryfield@etcpm.com)

POLICE

Christmas is fast approaching and I am sure many of you are rushing around Christmas shopping. Please see below some very useful tips from the Suzy Lamplugh Trust to think about whilst you are out and about.



1 - Don't get loaded down with too many bags. Try to keep one hand free.

2 - Try and avoid taking young children into busy shopping areas. If it is unavoidable make sure they know what to do if they lose you, e.g. tell the nearest shop assistant that they are lost and NEVER leave a shop without you.

3 - Agree a meeting point with older children in case you get separated.

4 - Be careful where you park your car, especially if you will be returning to it after dark.

5 - If parking in a multi-storey car park, choose a well-lit space as close to the exit as possible and away from pillars. Reverse into position.

6 - Keep car doors locked whilst driving in built-up areas, especially if you've got bags of presents in the car.

7 - Don't leave presents on show in a parked car, as they could tempt thieves.

8 - Keep alert and aware of your surroundings, especially in busy shops and crowded streets where thieves and pickpockets may well be operating.

9 - Keep a close watch on your valuables and try not to keep them all in one place.

Devon and Cornwall Police have recently re-launched their website. You can find all the information you need on reporting crime, lost property, what is going on in your area and much more. Please visit. www.devon-cornwall.police.uk

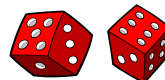
I would like to wish a very Merry Christmas and New Year to all residents. Thank you for your continued support throughout the Year.

Best wishes

Emergency 999, General Enquiries 101
Sarah.trayhurn@devonandcornwall.pnn.police.uk

PCSO Sarah Trayhurn 30110

FRIENDS OF THE CHURCH LOTTERY



November brings this month's fortune (£25) to Rosemary Langridge. Next month is a Christmas bonus - £50! - to look forward to!

Clive Wilson

ANOTHER SCAM



This message relates to Scam telephone cold calling, where the caller will state that your bank account has been compromised and stating they are

calling from the police or the bank and are able to provide you with details of a new "Safe" bank account. The cold caller will then insist that funds be transferred into this account. Please note -The Police will NEVER call you and ask for your bank card, PIN or cash.- Your Bank will NEVER call and ask you for your bank card, PIN or cash. -NEVER give or disclose your PIN no: or any other banking or personal details to anyone. If you receive a call and suspect it is a scam - tell the caller you will be reporting it to the police. Please report any incidents of this nature to the police via the 101 no: quoting Operation Fardel which is the Devon and Cornwall Police response to crime of this type. We would ask recipients of Community messaging to make your more elderly and vulnerable neighbours aware of this message. Thank you

Devon and Cornwall police

**METHODIST CHURCH,
CHAPEL ROAD
WEDNESDAY, DEC 17TH**



Lympstone Methodist Church are hosting the Commando Training Centre chaplaincy plus members of the Royal Marines band service in leading carol singing throughout the village. This event is open to all. If you would like to sing, please meet at the Methodist hall

at 6.30 p.m. for a 7 p.m. start – or join us as the procession goes through the village. Song sheets and jingle bells will be provided. Collections will be taken for Lympstone Preschool. Everybody is welcome back at the hall afterwards for mince pies, cookies and hot chocolate.

Christmas Eve at 5.30 p.m. "Carols Around the Crib".

The shopping is over, the presents are wrapped, the turkey prepared – come and celebrate with us at our family friendly service ~ everyone is warmly welcome. Service led by Rev. Bruce Sawyer. Coffee and mince pies to follow.

Sunday Services are held weekly at 10.30 a.m. Rev. Sawyer can be contacted on 01392 256716.

Julia Tolman-May



'RETURN OF THE DEVIL'S FOOTPRINTS'



A Mummers play will be performed by the Laughing BanShees on December 17th at The Redwing 8.00pm; The Swan 8.30pm and at The Globe at 9.00pm.

JennyMoon

PLUSH HAIR AND BEAUTY STUDIO



We said goodbye to hairdresser Leanne Mills at the end of November. Leanne is off to pastures new and has gone for a change in career to work for the Co-operative group in Topsham. We wish her all the very best. Theresa and Craig would like to introduce Rachael Kenny to your village salon as our Senior Stylist. Rachael has just short off 20 years knowledge and experience in the hair industry and is qualified to NVQ Level 3 in all aspects of hairdressing and barbering! She has built up an excellent reputation in and around the Exmouth area. We wanted to recruit the very best of hairdressers for your village and were very careful in our recruitment process. We are very confident in Rachael's skills and capabilities and know you will be too! Rachael has in the past owned her own salon and also worked in many other top class salons around the South West and Oxfordshire areas.

If you have any questions about your hair then Rachael can help!!! From colour correction to the very best of haircuts etc, she is very qualified in all. Rachael is well known to Lymestone Village as she has many family and friends that live in the village. Rachael is going to be an asset with her exquisite experience to our lovely Lymestone Village Hair and Beauty

Studio and we look forward to seeing you all at Plush. Please ring or call in for an appointment on 01395 274089.

Theresa, Craig and Rachael wish all our customers and everyone a very merry Christmas and New Year 2015. As a thank you for your support and to introduce you to Rachael the salon is offering 10% of all services in January. Quote 'herald' for this offer!

Theresa Armstrong

HEATHFIELD ALLOTMENTS



Once the shortest day has passed, it will soon be time to think about planting, sowing and planning next season's crops. If your thoughts turn in this direction, and you live in the village, now is a good time to apply for an allotment as the waiting list is very short. Applications forms can be obtained from me on 274099.

Diana de la Rue

LYMPSTONE RESIDENTS OVER 60'S LUNCH CLUB



Many thanks to Mary Blair and her team and also anyone responsible for providing the delicious meals. From Margaret Green and the other over 60's

Margaret Green

ART WORKSHOP AND TALK



Lympstone Art Group are holding a workshop on Calligraphy run by Ruth Sutherland which is on Wednesday 14th January 10am to 4pm Lympstone Sailing Club,(cost £30). The day will include an explanation of good preparation, organisation of workspace, equipment, how to sit and how to layout your paper. Ruth will explain how alphabets vary, all deriving from historical scripts. You will start by drawing pencil letters and then progressing on to pen and ink. You will also have the opportunity to create painted letters and to decorate these and finally writing out a quote using the script that has been learnt on the day. If you are interested in attending contact Mai Targett, 271915 email maitargett@btinternet.com

There will be a talk, "Plein Aire or Not?", by Phil Creek on Thursday 5th February at 7.30pm in the Methodist Hall, Chapel Road. Plein Aire, or painting directly from your subject, as a painting methodology, is becoming increasingly popular. Is it important to paint from direct observation, often outside, or is working from photographs or drawings just as successful? Phil will discuss his own work and compare different ways of working and how different methods can impact upon the qualities you can

achieve. All are welcome, members free, others £3 on the night.

Lizzie Hodge

SOUTH WEST COMMS BAND



It has been another busy year for the Band, with the renegotiation of another two years sponsorship with South West Communications Group; hence the bands' name change and the retirement of our long standing Musical Director, Charlie Fleming and the start of a new tenure for Rich Harvey the bands' new conductor.

The Senior Band along with the Training Band will be performing a Christmas Concert in the Lympstone Band Centre on Friday 19th December commencing at 7:30pm. Where you can meet the new Musical Director and see and hear how both the Senior Band and the Training Band have progressed over 2014. The programme of music will include Christmas favourites and the odd Christmas Carol or two. Refreshments will be served during the interval and tickets are available on the door, on the night, £4 each for adults, with free entry for children under 16.

To find out more about the Senior Band and the Training Band, please contact Robbie Steel on 07951 839654.

Finally the Lympstone Senior and Training Band would like to wish all a

very merry Christmas and a Happy New Year.

Robbie Steel

BOXING DAY SWIM



A great way to recover from merry Christmas indulgence- a dip in the estuary at Lympstone Harbour at 10am. The Sailing Club will be open from 9.30 am and there will be hot drinks and changing facilities available. If you are not quite brave enough to take the plunge come along and cheer others on. There will be a collection for training boats for youngsters.

Judith Carter

WHO WAS JOHN JENNINGS?

The Lympstone Christmas Cards that are proving such a hit at the Newsagents – The Three Wise Men and The Shepherds – are images from the Nativity window in the Parish Church made by a Victorian stained glass artist called John Jennings. But who was John Jennings? Well, we know he lived in Clapham High Street in London SW4, because he scratched his address on the glass. We know that he made windows in Wales and Sussex. But that's about all. He is not famous, like the makers of other windows in the



church – Clayton & Bell, for instance, or Heaton, Butler & Baines. But his pictures are full of character. Just look at the facial expressions. There is a wonderfully fearful and astonished shepherd, and the face of the baby is one of childlike curiosity as he gazes down at the Kings offering their gifts. We should have heard of this artist from the last years of the 19th century. There are two more of his windows in the church. If you buy these cards and send them this Christmas, you will be showing your friends these richly-coloured images, and contributing to the upkeep of Lympstone's finest building. At £2.50 for a pack of 5, that's a bargain.

Harland Walshaw

DAY SKIPPER COURSE



There are still a few places available on the RYA Shore Based Day Skipper Course which will be run over 6 days on Saturday 10th and Sunday 11th, Saturdays 17th, 24th and 31st Jan and 1st Feb or 7th Feb for the exam. It will be held at Lympstone Sailing Club from 9am to 5pm. The cost will be £250 per person + Cost of Course Materials(£35). If you are interested in a place contact judith_carter@hotmail.com 274104

Judith Carter

EXE ESTUARY TRAIL

We are still awaiting a response from DCC on several issues. First, they have not responded to the recommendation by Devon Countryside Access Forum (DCAF), an independent body, to develop an off-road route for the EET through Lympstone. Secondly, they have not sent the Parish Council proposals to improve the safety of the existing route (promised much earlier in the year). Following recent telephone calls and emails to chase these issues, the safety proposals are now expected by 15 Dec, the date of the next parish council meeting. We will continue to pursue a formal response to the long term issues.

A summary of incidents reported in November is given below. As we all know, this is likely to be only a fraction of the actual number of incidents. The problem is the confusion of the reporting system. One resident had to wait half an hour on the Police 101 telephone system before speaking to anyone. We are investigating this and trying to identify the best approach, i.e., easy to use and building the evidence we need to influence DCC. Please contact us if you have any suggestions. In the meantime, please remember to report any incidents (including near misses) using the forms in the Newsagent and on the village website, and/or directly to me either verbally or in writing: judith_carter@hotmail.com

- (1) A near collision between a car driver and 2 cyclists, cycling 2 abreast, on the corner at Sowden End. It was nearly dark and, although wearing hi-viz jackets, they had no lights. The driver was left very shaken and distressed.
- (2) A near collision between a car and cyclist at the junction of Chapel Road and The Strand. The car driver was edging slowly out of Chapel Road when a fast cyclist coming from the direction of Station Hill nearly collided with the car, swerved and swore at the driver.
- (3) A distressing incident when a man talking to another person on The Strand next to the Newsagents had a cyclist travel at speed between them and when they asked the cyclist to slow down when travelling through the village they got an extremely aggressive and rude response.
- (4) A near miss between a pedestrian on the Strand and a cyclist coming very fast down Cox's Hill. The pedestrian had to jump out of the way to avoid being hit.



Judith Carter

DECEMBER FILMS



The Friday film this month is *Behind the Candelabra*, on 12th December at the Village Hall. Screening starts at 19.30; bar from 18.45. The film is based on the colourful and way-over-the-top life of Liberace. Free to Film Society members; £5 on the door for visitors. Mince Pies and Mulled Wine available.

The Tuesday Matinee on December 9th is *Whisky Galore*, the classic and much praised Ealing Comedy . Film starts at 14.15 in the Methodist Hall. £3.50 including tea and biscuits.

Don Mildenhall

VILLAGE WEB SITE



Any updated information please contact Update@lympstone.org or call 01395 489506 *Mark Reynolds*

MEMORIAL SERVICE

We would like to congratulate the people who organised the service and memorial for the World War 1. It was very moving and we really enjoyed the evening. Well done!

Gill and Mick Cornish.

We can't do the work we do without the support of our priceless volunteers in our shops. We are always looking for more people to donate their spare time to support our incredible hospices and neurological care centres. Sue Ryder runs 7 Hospices and 6 Neurological Centres helping people with such conditions as MS, Parkinsons, Brain injuries and strokes.

Worried about commitment – Don't worry! We are grateful for whatever time you can give, it doesn't have to be a full day or even a half day. Give I or 2 hours a week or everyday its entirely up to you, we'd love to see you.

To have a chat and find out more then please contact Debra Wellington on 01395224802 or 07947363142 or email, debrawellington@talktalk.net. Alternatively pop into our shop on Exeter Road and ask to speak to Laura or Fiona.

Debra Wellington

KARATE CLUB

Thursday evenings in the Youth Club hut.

peteredwards74@hotmail.com

.....
**SUE RYDER CHARITY SHOP
EXMOUTH NEEDS YOU!!!**

.....
NEIGHBOURHOOD FRIENDS

Pledge your support to help older people in Lympstone this coming winter, and become a “Neighbourhood Friend”. Westbank has secured Cabinet Office funding to mobilise an army of volunteers to support people aged 75 this coming winter in their community, with the main aim of trying to reduce hospital admission, or length of stay in hospital and therefore reduce the costs to the NHS. Referrals are received into the project by GP’s or health professionals and Underhill Surgery is particularly supportive of the project. Volunteers can sign as one of the following:-

Welcome Home Friend – someone to help settle an older person into their home following a hospital stay

Rapid Response Friend – someone who can react to a variety of requests from clearing snow to picking up a prescription, to feeding a cat

Wellbeing Friend – someone able to offer that longer term befriending support.

As a volunteer you can expect support training and all agreed out of pocket expenses.

For more information contact Sarah Forde – s.forde@westbankfriends.org.
Tel: 01392 823690

Sarah Forde

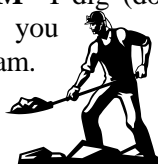
MOBILE LIBRARY



Dec 5th
Meadow Close 10:15 -10:35
Village car park 10:45 -11:45

Diana Letcher

DIGGING FOR OXFAM I dig (do gardening jobs). What you pay me goes to Oxfam.
01395-276569



Jenny Moon

LYMPSTONE WI

Meeting, as we do, on the first Wednesday of each month means that the Lympstone WI has the perfect excuse to kick off the Christmas celebrations early. Everyone brought along a bran-tub present and a dish to share to our Christmas meeting, which was held in the Main Hall of the Village Hall on the afternoon of the 3rd December.



Before getting down to the food, gifts, and entertainment we were reminded about the Estuary Group Carol Service, followed by tea and mince pies, due

to take place at Glenorchy Church, in Exmouth, at 2.30 pm on the following Wednesday, the 10th December, as well

as the Christmas Tree Festival in Clyst St Mary Church, running from the 5th to the 7th December.

For Christmas entertainment, we were delighted to have some of the children from Lypmstone Primary School, led by headteacher Emily Mellor, sing some Christmas songs, with the final song being accompanied by energetic actions. This was followed

by poems, sketches and songs from Sharon



Wayland and

Wendy, who, some may remember, made a splendid Dame in last winter's pantomime.

Our next meeting will be back in the Committee Room on Wednesday the 7th January at 2.30 pm. We will start the New Year by paying our subscriptions and discussing and voting on the seven resolutions outlined in the latest issue of WI Life. Our speaker that day will be Mrs Jasmine Sleight, who will be helping us keep some of those New Year Resolutions by advising on how to "Declutter your Home".

As well as our regular monthly meetings, we have some exciting extra activities planned for 2015, starting

with a New Year evening meal at the Redwing on Tuesday the 13th January and a lunch at the Sailing Club on Tuesday the 24th February.

We are very pleased to welcome anyone who thinks she might be interested in finding out about the Lypmstone WI. For more information please phone Diana de la Rue on 01395 274099 or find us on the village website.

Lindy Newton

DISCLAIMER This news letter is compiled from emails sent to the editor by numerous people and very little of the information is checked before publishing which is done in good faith.

Formatting of this issue is slightly irregular because of the lateness of several contributions and the quality of articles and advertisements submitted.

Merry Christmas from and to everyone connected with producing and delivering the Lypmstone Herald.

Chris Carter, Editor

Below is an illustrative concept plan setting out the broad parameters of the proposed development.



MARLEY RD DEVELOPMENT

Redwing



The REDWING
Wishes you all a Merry Christmas
and a Happy New Year

Seasonal Opening Times

Christmas Eve Open for Lunch & Dinner

Christmas Day, Boxing Day & 27th Closed

28th, 29th, 30th, 31st, Open for Lunch & Dinner

New Year's Day Open for All-day Breakfast & Lunch
from 11.30 and Closed at 4:30

01395 222156

CARNIVAL HOUSE



FANCY DRESS

To avoid disappointment book early for Xmas and New Year. We have many more costumes to buy this year as well as fun accessories to make your perfect costume.

We also sell picture frames and mounts.

5 Exeter Rd, Exmouth, EX8 1PN
Phone 01395 224664

Merry Christmas from all @ THE GLOBE INN



.....
New Menu of the Day

Available Monday to Friday 12pm till 2pm

1 Course only £4.95, 2 Courses for £6.95

3 Courses for £7.95

Collect your loyalty stamps & receive your 7th meal free

6th December from 10.30am

Mince Pies & Mulled wine event courtesy of Lympstone Furry Dance

Meet & Greet Santa, Raffle, & South West Telecoms Band

14th December from 5pm

Globe – tastic Christmas Raffle

Followed by a live performance from Sherlock Holmes & the case of the mincing pies & the fabulous BOUNDLESS BROTHERS back from their recent record deal to perform especially for us for Christmas

20th December @ 10pm - Lympstone Mummers are here

21st December from 8pm

Christmas Carols in the Snow with Symon Ellis Harpist

LIVE MUSIC

5th – The Late Shift

10th – Lympstone Folk

12th – Dave Rich

19th - Roger Styles

28th - Open Mic & Karaoke from 7pm

New Years Eve – The Real Me

Limited tables remaining



CHRISTMAS & NEW YEAR OPENING HOURS

Christmas Eve 12pm till 1am

Christmas Day 11am till 3pm

(no food service)

Boxing Day 12pm till 12am

New Years Eve 12pm till 2am

New Years Day 12pm till 12am

Normal food service unless stated.

THE GLOBE INN

THE STRAND

LYMPSTONE

T: 01395 263166

FOOD SERVED

Monday to Friday 12pm till 2pm & 6pm till 9pm


Saturday All day 12pm till 9pm

Sunday All day 12pm till 8pm

.....

CELEBRATING OUR FIRST ANNIVERSARY!
ZUMBA® AT LYMPSTONE YOUTH HUT




Fun, friendly fitness class, suits all abilities!
Weds 9.20 – 10.20am. £4.50/£5 drop in
Contact Susan on 07583 242719 or
susanmason99@hotmail.co.uk



East of Exe

Exceptional Estate Agents

for East Devon,
Topsham and Exeter



www.eastofexe.co.uk 01392 877240

NEED A HAND AT HOME?

Sarah can help! Home help/cleaning/ironing/shopping/dog walking/light gardening.
07791 944938 Refs available.
DBS checked

FRENCH HOLIDAY LET, Vendee: overlooking golf course and only 10 mins drive from superb beach. 3 bedrooms, 2 bathrooms, communal swimming pool and tennis courts. From just £350 per week. Tel 01395 272032 or email: annhurley1@sky.com

CYGNET COTTAGE - Quiet self-catering cottage just yards from the foreshore. Sleeps 3/4. From £70 per night. Visit www.cygnetcottage.net, or ring Demelza on (01395) 272243.

JEFF CROMPTON

Greenways, Courtlands Lane,
Lymestone

For Superior Quality Home
Improvements and All Types
of Building Work including
Kitchens & Bathrooms

Tel: 01395 272815

Mobile: 07768 282 129

EXE-GAS & OIL



Plumbing & Heating

Boiler breakdown & service

New installations

Fires & cookers fitted & serviced

LPG systems

Plumbing

Oil Boilers

For free estimates or advice please call

Peter Williams: 01392 877345

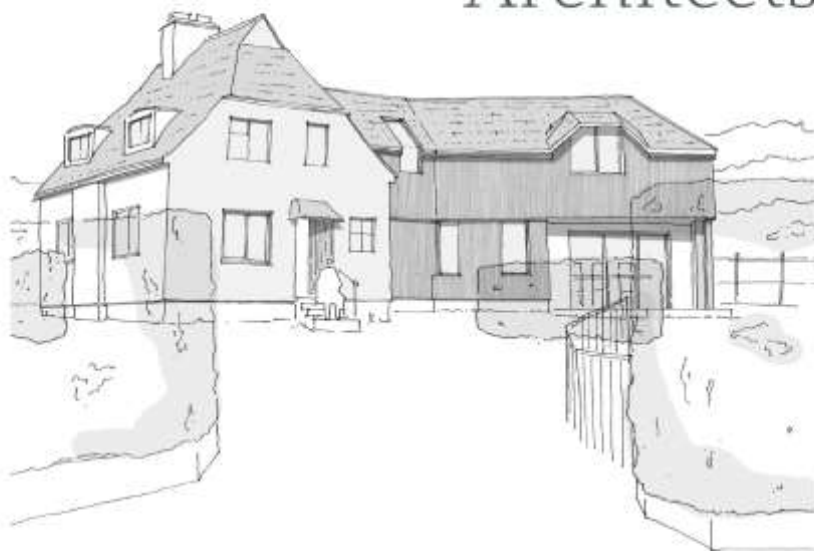
Mobile: 0787 1621157

Boiler Servicing from £50

Qualified Bookkeeper

available for bookkeeping
work, year end accounts,
self assessment, VAT
returns. Tel 01395 263280

Hilton Barnfield Architects



We offer a personal, creative and professional design service for your project.

- Design expertise
- Planning applications
- Building Regulations documentation
- Detailed drawings
- Construction co-ordination

Call for a **free initial consultation:**

01395 224 829

www.hiltonbarnfield.co.uk



**COMPUTER
REPAIRS**

**ELECTRO
COMPUTERS**

NO FIX - NO FEE

01395 548151 / 07944 051987



PETER J ACCA
Property Maintenance
PVCU WINDOW REPAIR SPECIALIST
Replacement Double Glazed Units

thesccas@yahoo.co.uk
07801365097
01395489791
53 Evergreen Close
Exmouth EX8 4RR



PROPERTY MAINTENANCE –

James Waddell Interior & Exterior,
Carpentry, Flooring, Fencing &
Gates, Plumbing, Decking,
Bathrooms & Kitchens, General
Repairs. Free advice & Estimates.
01395 263496

SIMON QUICK THE LOG MAN

For all your log, coal, kindling & gas
supplies Tel 01395 267490

*Adverts cost 60p a line or £12 to £15 a
box or £90 a page (with reductions on
runs).*

COUNSELLING THERAPY

Jenni Gates MA, Adv Dip Couns,
MBACP. 07565 288004 Email
jennigatestherapy@gmail.com.
www.jennigatestherapy.co.uk

DOG GROOMING



Kind & Qualified Groomer.
Commissions for PET PORTRAITS
in pastel also undertaken.
Make Superb Presents.
(Examples of work can be viewed).
Tracey Crompton, Greenways,
Courtlands Lane, Lympstone.
Tel: 01395 272815 /07973 986 268.

EXE VALLEY FUELS

Traditional Coal Merchants

- Supplying quality coal and smokeless fuels
 - Stockist of bottled gas
 - Regular deliveries in your area
- 01392 841464

Email: exevalleyfuels@btconnect.com

Website: exevalleyfuels.co.uk

CLOCK REPAIRS

Terence C. Matthews - Horologist
Westminster Chimes
Wall Clocks
Grandfather / Grandmother Clocks
Dial Clocks



Long Case Clocks
Carriage Clocks
Free estimates and house visits
Tel: 01395 273563

Find some winter sunshine!
Comfy casa near the Costa Blanca, Spain

Peaceful, two-bedroomed home. Roof terrace, gorgeous views, communal pool and tennis. Beaches, cycling, golf, hiking and more. Suits all ages.
Flights from Exeter & Bristol

Lympstone residents 15% discount
Tel: 07986 607610
www.algorfaholiday.com

FOOD WITH FLAIR CATERING

Small and Large Events -
Menus to Suit your Budget
Telephone Shirley or Michael
on 265147 or see our Website
www.foodwithflair.co.uk



WALK IN's AND EVERYBODY WELCOME !
Perms, Barbering, Shampoo and Sets, Colouring, Highlights, Foils, Massages, Waxing, Geleration Nails, Facials, Makeovers, Tanning and more .**For an appointment call us on 01395 274089 Text only on 07552313653**



DustAway

All Work and no play, we are here to help

Friendly Efficient Cleaning Service

Lympstone Based

Weekly, fortnightly, monthly

One off cleans ie moving house, holiday lets,

End of tenancy cleans, just redecorated or a spring clean

- We also offer an ironing service

All materials supplied. Fully insured

Please call Tracey 07727168817 or Jill 07818484864
www.dustaway-cleaning.co.uk

LASH EXTENSIONS by Cara de ella for your Christmas and New year parties! Treat yourself to beautiful, natural individual lashes for a special occasion. Call 07736050748 to book. Face Book page 'Make up artist Sadie Slade-Smith'

SMALL ADS

LYMPSTONE GREETING CARDS AND POSTCARDS

Scenic photographs of your village - from the harbour, boats and washing-lines.....to sunsets and Lymptone Life! Available from the Newsagents or Frances Longhurst 263495

PREGNANT? Experience the magic of birth: release fear and tension, remain conscious, deeply relaxed, in control. Hypnobirthing antenatal classes: for more info phone 01392 412767 or see libbyclaphamhypnotherapy.co.uk

PICTURE FRAMING. For all your framing requirements; also frame restoration & chair caning. Caro Ambridge 01392 877460, Topsham.

DAWN 'TIL DUSK

Creative Gardening service Routine maintenance, Designs & Creates. 0786 6566 883 dawnc@live.co.uk

TUTOR AVAILABLE Local experienced Primary School Teacher available to teach Maths and English. Can also prepare children for SATS, Colyton and 11+ exams. Reasonable rates. For more information call Becky on 07806554106 or email: bekychurch_@hotmail.co.uk

PIANO with a VIEW Lessons for all ages, beginners and improvers, "purely for pleasure" and ABRSM exams to Grade 8. Theory to Grade 5. Tel: Judy Joss (BA Mus, Dip Ed) on 222749

MATHS TUITION Experienced tutor available to teach primary to GCSE level maths. Reasonable rates Tel: Jane Moffatt on 279952 or **07730877889**

PRISTINE CLEAN - Domestic ironing and cleaning services. Local lady. Call Niki - 01395 740727

FOOT HEALTH PRACTITIONER - Lindsey Waddell MAFHP. Nail Cutting and Treatment of Corns, Callus and Verrucas. Home Visits. 01395 263496

ACCOMMODATION

WITHALL'S HOUSE BED AND BREAKFAST. A modern and spacious home close to the heart of the village. Ample parking and flexible accommodation. Call Pete and Jan Hardy on 01395 488123 Or visit www.lympstonebedandbreakfast.co.uk

WHATS ON

DECEMBER

5 Mobile Library
6 Furry Dance Christmas Event
8 Advent Quiet Hour
8 Courtlands House development
9 Film Matinee
12 Film + Mince pies
15 Church Carol Service
15 Parish Council- Marley Rd Dev
17 Carols with Royal Marine Band
17 Mummers in village pubs
19 Band Xmas Concert
21 Christingle Service at Lympstone
24 Carols Round the Crib
24 Midnight Mass at Lympstone
25 Sung Eucharist with carols
26 Sea swim at the Harbour

JANUARY

5 Parish Council
7 WI
10 Sailing Course starts
14 Art Group Workshop



Optima Graphics

Topsham Ltd

silk screen, digital & litho printers

*We provide a high quality, good value
and prompt printing service.*

Silk Screen
Vinyl Stickers
Estate Agent Boards
Printing on:
Metal, Acrylic,
Plastic, Wood

Large Format Digital
Banners
Display Panels
Window Graphics
Pull-up Display Stands
Magnetic Vehicle signs

Litho
Brochures & Leaflets
Stationery
Labels & Invitations
Pads
NCR sets

T: 01392 873822

E: sales@optimagraphics.co.uk W: www.optimagraphics.co.uk

20b High Street, Topsham, Exeter, Devon EX3 0EA