

## NEIGHBOURHOOD PLAN

Whether you were in the 'Yes' or 'No' camp when it came to the Neighbourhood Plan you cannot be anything other than very proud of the passion the parishioners showed when it came to the all-important referendum. The national average for local elections is 31.3% but Lympstone Neighbourhood Plan Referendum achieved a turnout of 43.59% which was truly amazing! The result of the vote held on 26<sup>th</sup> March saw that 86.5% of voters were in favour of the Plan.

Speaking on behalf of the Neighbourhood Plan Working Group, Linda Lyon said "We want to thank everyone who voted in the referendum. We are truly overwhelmed by the result and it makes all the hard work so worthwhile. "

The Neighbourhood Plan isn't just about housing and the result demonstrates that local people really want to have a view in shaping their community. It also gives the Parish Councillors a clear mandate to support the community policies the plan contains.

The Neighbourhood Plan has included contributions from many local residents over the last 3 years and the Working Group would like it to continue to be 'inclusive'. They are always keen to see fresh faces in the Group and would love to hear from any parishioners who may be interested in helping with a particular project, joining the group, being an occasional volunteer, or getting involved in the Plan.

Further information will be available after the elections in May.

---

Editor: Chris Carter, Tel 274104. Copy Editor – P Acca, Deputy Editor – W. Headeach

Advertising - Liz Griffith: Lympstone web site – [www.lympstone.org](http://www.lympstone.org)

Copy deadline for the next issue – Tuesday 12<sup>th</sup> May, 10am

Copy by e-mail, if possible to [chriscarterathome@hotmail.com](mailto:chriscarterathome@hotmail.com)

The Editor at Hillcrest, Greenhill Ave, Lympstone, EX8 5HW

Distribution by the Telfers, Tel 272275 and others

## THE PARISH CHURCH



**Annual General Meeting** Voting. Following the good turn out and emphatic majority vote for the Village Development Plan, the television coverage of which can now to be seen on the village website, perhaps you are ready for the General Election. Well, there is one more vote you are entitled to. There are no polling cards and no booths but the entitlement is there in the law of the land and the established church. All parishioners may vote for the church wardens of the parish. The Church AGM is to be held on Sunday 26th April at 11.15 following the morning service.

**The Children's Society** wrote to thank the village for the donation of £455.52 collected by carol singers and the Lymptstone Mummers last Christmas. This was the highest donation collected when the Mummers played to pubs in Topsham, Exmouth and the village. Thank you for your support. They wrote "Thank you so much. We promise that we'll spend every penny you've raised wisely. Your

contribution could change the young people's stories forever."

**Reordering the East End of the Church** - Whenever a church makes a permanent change to the building a faculty (or permission) has to be obtained. The Diocesan Advisory Council has to give the approval. The DAC have come back to the PCC with comments and the correspondence is to be found in a folder at the back of church. The two slight alterations that they requested are to reduce the height of the pulpit and a change to the design of the tower arch screen. These have been redrawn. The other points raised have been addressed in writing and with photographs. The Churchwardens or John Lupton will be happy to discuss any matters concerning the application.

**Lent Lunches:** A huge thank you to all who helped. The makers of soup, the waiters and waitresses, the kitchen maids and men, and not forgetting the Downes who put the tables up each week and put them away again, often helping in between as well. The total sum raised was £357.97 which will be shared between Exmouth Open Door and St Petrocks.

**Wednesday Lunches:** Each week in the Methodist Hall at 12.30 pm. Cost £5. The number of customers has dwindled considerably since

Christmas – so if you know of anyone of pensionable age who might like a two course lunch in congenial company, do contact Mrs Diana Winterford-Young (260307) or myself, Mary Blair (265586)

**Making Contact With The Church And Team.** Team Rector: Revd James Hutchings – contact via the office or out of hours on 01395-225212. Assistant Curate: Revd Sid Humphries – 01395 274512.

Holy Trinity Office is open 10am-1pm Monday to Friday. Tel: 01395 263681.

websites:

[www.exmouthcoastalchurches.org.uk](http://www.exmouthcoastalchurches.org.uk);  
&.. [www.lympstonechurch.org](http://www.lympstonechurch.org)

**Afternoon Tea** will be served in Holy Trinity Church on Saturday 18th April for a donation to the Children's society and the Mother's Union.



**Social Events for All** with dates for your diary:

**Beetle Drive** will be held in church at 6.30 until 8 pm on Saturday 11th April please bring and share drinks and nibbles. Dice shakers at the ready!



**The Village Trail** will be held on 25th May from 2 until 5pm, make a note in your diary

**The Friends cricket match** will be held on the 11<sup>th</sup> June at St Peter's School see notices later for more details

**Sea Sunday.** 12<sup>th</sup> July is the date for the Sea Sunday service at Lypstone Harbour. The service begins at 11.30.

**The Pew Sheet**, which is the source of most of the copy for the church Herald report, needs information for publication and it should be sent to Philip White at 01395-264469, E-mail: [pcw\\_31@btinternet.com](mailto:pcw_31@btinternet.com) by 6 pm on Wednesday.

*Brian Mather*

## FRIENDS OF THE CHURCH LOTTERY



Our last winner of the 2014/15 lottery year is Mrs Carol Brister. Our new year starts at the end of this month. Thank you so much to all who have already bought their tickets - your support is a real help in keeping our lovely old church in good repair. I'd be happy to hear from anyone who would like to buy a ticket and has not been asked to buy one so far. (£6 for a whole year, ie 12 chances to win £25)

*Clive Wilson*

## ELECTIONS

Ben Ingham & Rob Longhurst are standing as Independent Candidates for East Devon District Council on May 7th. We will be holding two "Under the Bridge" sessions on Saturday 18th April and Saturday 25th April between 9.30 and 12.30. Please come along and ask us any questions you may have on this very important District Election. This is your real chance to get involved with LOCAL policies and how Lypstone is run by EDDC.

*Ben Ingham & Rob Longhurst  
Prospective District Councillors*

prices. We also sell Prints and Cards, so whether you want to buy something for yourself or a present for someone else, or just enjoy viewing the display; it is well worth a visit. Tea, coffee and cake also available.

A brief reminder that on Wednesday 15th April, Anne Satow will be running a workshop on 'Colour' from 10am to 4pm at Lypstone Sailing Club. Cost £30. There are a couple of places remaining- contact Mai Targett Tel 01395 271915 email maitargett@btinternet.com if interested.

*Lizzie Hodge*

## FROM THE EDITOR

I am told that 'patching' our roads is still underway although no schedule is available.

*Chris Carter*

## LYMPSTONE ART GROUP EXHIBITION



The Lypstone Art Exhibition will run from Sunday 24th to Sunday 31st May in the Village Hall. It will be open from 10am to 5pm except for Sunday 31st of May when the Exhibition will close at 2pm. The exhibition includes both pictures and 3D Art, most of which can be purchased at very reasonable

## HELP

Would you like to have a say in the way the village is run? Have you a few hours to spare each month? Then why not join the Parish Council? You would be very welcome as we are sure to have several vacancies due to some of the existing member having left Lypstone. In any case, all members have to resign on the 7<sup>th</sup> of May and re-election is not automatic. If you have not seen Lypstone Parish Council in action then come along to one of the meetings which are normally held twice a month – the schedule is on the Parish notice boards.

Many on the Council have special interests – Affordable Housing,

Amenities, Burial Ground, Communications (the village web site etc), The Environment, Travel and Transport including the Cycle Way, The Village Hall and the Youth Club. Or perhaps you have something different to add to this list. Please don't be afraid of being stuck with something you don't like. Minute taking and typing is all done by the Parish Clerk who will also help you find short introductory course(s) if you wish and generally helps us to stay within government guidelines.

The existing membership is a varied group with about 25% female, 30% retired and 20% professional. Everyone is welcome. Give either The Parish Clerk, myself or any other member of the Council a ring for further information.

*Cllr Chris Carter*

## **HARBOUR CRANING OUT**



The annual craning afloat of winter dry-berthed boats to the brook is planned to take place on the morning of Saturday 18<sup>th</sup> April 2015 from 6am to midday. For those boat-owners involved, it is a must. It is also a spectacle that attracts the attention of a wider audience, but perhaps not at 6am! A very large mobile crane will arrive in the village mid- to late afternoon on Friday 17<sup>th</sup> and depart early afternoon on Saturday. Owners

of vehicles normally parked on the route between the Harbour via The Strand, Bergmann's Hill, Nutwell Road and the A376, particularly on the corner turning into the Harbour outside the Swan Inn, and at the parking bays on The Strand furthest from and in sight of the railway bridge are asked to co-operate as usual in parking with extra care. Thank you.

*The Harbour Board  
Richard Crisp*

## **FRIENDS OF UNDERHILL SURGERY**

The Annual General Meeting of Friends of Underhill Surgery will be held on Monday 18<sup>th</sup> May 2015 at 2:30 pm at the Methodist Chapel, Chapel Road, Lymestone. All members, volunteer drivers and those who may be interested in becoming a driver are most welcome. Your support is very much appreciated for this busy, valuable and friendly village service.

*M. Wheeler*

## **MOBILE LIBRARY**

April 24th  
Meadow Close 10.15 -10.35  
Car park. 10.45-11.45

*D.Letcher*

## DEVON'S FAVOURITE 'BUOY' BAND LYMPTSTONE TENNIS CLUB

Devon's favourite "buoy band", The Exmouth Shanty Men, return to Lymptstone Village hall on Saturday 9 May. They plan to take us on a long trip – to Australia and back, with rollicking sea shanties and an exploration in song of some topics close to sailors' hearts: beer perhaps, the fairer sex for sure and some heroes from past deck lore.

Since they saw us last, the lads have been on a few trips themselves, to France, Belgium and Holland to sing at maritime festivals – and to Krakow in Poland, where they were honoured to win the Stan Hugill trophy for the most authentic shanties. They have found themselves on national television both here and overseas and have made two more albums .

The crew will have all its four "North Exmouth" members on board: anchorman Tony Day, David "Dai" Wright (ship's doctor), new cabin boy Ian Herbert and the gracious Lady Helen Highwater (Heather Redding).

Doors and bar open at 7.30pm for an 8pm start. Tickets £8 (£1 for under 16s) from the Lymptstone Entertainments 'box office' at 2 Brookfield Cottages, the Strand, or call 07516 322853, or 01395 272243.

*Grace Packman*  
*On behalf of Lymptstone*  
*Entertainments*

Date for your diary – Saturday 18 April

Our junior coaching programme begins on Saturday 18 April when our junior coach, Callum, will be at the courts from 10.30 - 12 to welcome new and existing junior members and to give details of our summer Saturday coaching programme. This will run for 8 weeks and is aimed at children of all abilities from school year 1 and above. Places should be booked on that day and numbers will be limited because of court safety.

Adults who want to give the club a try are invited to come along to the afternoon club session from 2pm. New members are always welcome and for those who haven't played for a while, we are planning to run "rusty racquets" sessions and senior coaching starting next month. In the meantime please contact Jill Dixon for information:  
[jilldixon100@hotmail.com](mailto:jilldixon100@hotmail.com)

*Liz Griffiths*

**LYMPTSTONE  
PLAYERS  
SPRING INTO  
ACTION!**



.Thursday, Friday, or Saturday 16 --  
18 April? Which night are you going

to see the Players performing 'Plaster' and 'Separate Tables - Table Number 7'? Do not leave it too late to decide especially if you want also to have the supper before the performances on either Friday or Saturday nights. More details are in the March edition of the Herald but in brief these are two very different plays, the first, by Richard Harris a wickedly funny piece; the second is vintage Terence Rattigan drama - we are performing a version never seen in his lifetime so if you think you know the play or the film version. come and see if you can spot the difference!

Tickets (£8 for the plays and £5 for the supper are available from our Box Office at The Haven (next to the Globe in the Strand) between 4 and 7.00pm daily. Reservations can be made by phone (274551) or by email to [lympstoneplayers@gmail.com](mailto:lympstoneplayers@gmail.com)

*Clive Wilson*

### **SOCIAL EVENING - Sunday 26 April From 8.00 pm**

For those in need of a drink after the reading or anyone else who just fancies a drink and a chat in congenial company, we shall have another of our 'drop in' pub evenings - this time in **The Redwing**. Hope to see you there - a chance to tell us what you really thought about our last production! *Clive Wilson*

### **WILL WRITING FORTNIGHT 11<sup>TH</sup>-22<sup>ND</sup> MAY IN AID OF HOSPISCARE - BOOK FROM 20<sup>TH</sup> APRIL**

A great opportunity to make or update your Will and support your local hospice.

Hospiscare is your local hospice charity caring for the people and their families in our community who are affected by terminal illness. We are only one quarter NHS funded so rely on the generosity of local people making gifts to us in their Wills to continue helping local people make the most of life.

Having a professionally written Will is the best way to ensure that you can protect those you love and remember the causes you care about. 26 Devon solicitors are supporting Hospiscare's Will Writing Fortnight and will write or update your Will for free so you can make a donation to Hospiscare instead.

This opportunity is open to everyone. Simply choose a participating solicitor and make an appointment.

Your most local solicitors include Exmouth

Every's Rachel Gedy, 01395 264384  
Ford Simey Jane Pickup, 01395 272241

Vine Orchards Jim McIntosh, 01395 273035

*Hospiscare*

## **EDDC AGENDA CABINET**

**DATE OF MEETING: 15 APRIL**

Public Document: Yes Exemption:  
None Agenda item: 16

**Subject: Lymestone Neighbourhood  
Plan to be formally ‘made’**

Purpose of report: The Lymestone Neighbourhood Plan has now passed referendum and it must be formally ‘made’ by East Devon District Council for it to form part of the development plan.

Recommendation:

It is recommended that:

1. The Lymestone Neighbourhood Plan is ‘made’ so it forms part of the development plan.
2. That the Council write to the Neighbourhood plan group to congratulate them on all their hard work and advise that once ‘made’ the Lymestone Plan will carry its full weight in the planning decision making process;

Reason for recommendation: The Lymestone Neighbourhood Plan received a majority ‘yes’ vote in the referendum as required by the regulations and there is no substantive reason not to ‘make’ the Plan.

Officer: Timothy Spurway,  
Neighbourhood Planning Officer  
(01395 571745) [tspurway@eastdevon.gov.uk](mailto:tspurway@eastdevon.gov.uk)

Financial implications:

Government grant has been received for the various stages of the plan.

Once ‘made’ the Parish Council will be eligible to receive 25% of CIL

receipts for development that occurs within the parish upon adoption of the CIL charging scheme.

There are no direct financial implications contained within this report.

Legal implications: Following a majority vote in the referendum the Council must proceed to adopt (or ‘make’) the plan, unless in doing so it causes a breach of EU obligations or Convention rights. The Independent Examiner concluded that regard has been added to Convention rights. Moreover, the Council has adopted a Screening Opinion, accepted by Natural England, which confirms that there is no breach as far as EU legislation is concerned in respect of European Protected Sites. It is not considered that there are any other breaches of EU obligations that can be identified. Accordingly, the legal position is that the Council must ‘make’ the Neighbourhood Plan. As noted, following being made, it will become part of the Development Plan for decision making on planning applications.

Equalities impact: Low Impact

The Neighbourhood Plan has been produced with considerable community engagement. All persons living in the parish have been engaged throughout its production and all persons registered to vote in the area could vote in the referendum.

91

Risk: Low Risk



The only reason for the NP not to be made now is if the Council consider that to do so would breach an EU obligation or Convention right. There is a risk that should we take that decision it will be subject to legal challenge and that the Parish Council will feel disenfranchised that their right to produce a Neighbourhood Plan under the Localism Act has been prevented.

Links to background information:

- o The Localism Act
- o Plain English Guide to the Localism Act:
- o National Planning Policy Framework:
- o Neighbourhood Planning Regulations:

o Lymington Neighbourhood Plan  
Link to Council Plan: Living in, working in, enjoying this outstanding place

Report in full

1.0 Lymington Neighbourhood Plan Referendum

1.1 On 26 March 2015, a referendum was held on the Lymington Neighbourhood Development plan at the Lymington Methodist Church Hall, Chapel Road Lymington EX8 5ER from 7am to 10pm.

1.2 Voters were asked the following question:

*"Do you want East Devon District Council to use the neighbourhood plan for Lymington to help it decide planning applications in the neighbourhood area?"*

1.3 The regulations advise that if more people vote 'yes' than 'no' in the referendum, East Devon District Council should use the Neighbourhood Development Plan to help it decide planning applications in Lymington. The Neighbourhood Development Plan once adopted will then become part of the Development Plan.

1.4 In East Devon the development plan currently consists of the adopted East Devon Local Plan, 2006; the adopted Devon Waste Plan, December 2014, and the Minerals Local Plan, June 2004.

1.5 The final results of the referendum are shown below:

Yes: 561 No: 87. Voter turnout 43.54% In favour: 86.5%

1.6 The results show a clear majority in favour so now the cabinet must consider whether it would be appropriate to 'make' the neighbourhood plan.

1.7 Once the Neighbourhood Plan is formally made it will carry its full weight in the planning decision making process. As part of the Development Plan any planning applications in Lymington will be judged against it as well as policies of this Council and also the National Planning Policy Framework. Application of the policies of the Neighbourhood plan will ensure that the hard work that has gone into its production will result in effective application of local community

expectations and aspirations in the decision making process. It is also noted, as well, that the plan extends beyond town planning matters and will, therefore, give voice to local community based policy initiatives.

1.8 The only reason for the NP not to be made now is if Cabinet consider that to do so would breach an EU obligation or Convention right. When the Neighbourhood Plan was independently examined the examiner noted the following:

*"I am satisfied that the Neighbourhood Plan has regard to fundamental rights and freedoms guaranteed under the ECHR and complies with the Human Rights Act 1998 and there is no substantive evidence to the contrary."*

2 Next stages

2.1 Following the decision whether or not to make the NP (or where the referendum results in a 'no' vote or the NP is refused as it would cause a breach of an EU obligation or Convention right), we will produce a decision notice (detailing the decision and reasons for it and where it may be viewed) and publish it;

☐☐ on the NP pages of our website

☐☐ by sending a copy to the plan producer and requesting that the Plan Producer notifies those persons who live, work or carry on business in the NA to which the NP relates

☐☐ by notifying the 'consultation bodies' referred to in the consultation statement

☐☐ by advising those adjoining authorities

☐☐ Anyone who asked to be notified of a copy of the decision

☐☐ All those who made representations on the plan.

## **T.A.P. SPRING 2015. THIRD AGE PROJECT**

10th April- Easter Bonnet Competition, Bring A Plate Of Food, Games And Quiz Afternoon  
17th April - Dream – A – Way  
A talk by Mr. Jeff Merrett MBE (Chairman of Dream-A-Way).

Diana B. 24th April - The River Dart  
A talk by Mr. John Stuart.

Diana B.

## ***D Budgen***

## **OPEN GARDEN**

Ki and Mona Moudry have very kindly offered to hold an Open Garden at their home, Sowden Orchard, Sowden Lane, on Sunday 7th June, 2 - 5 pm. in aid of Exmouth & Lympstone Hospiscare. Further details will be in the May Herald.

*Frances Longhurst*

## LYMPSTONE GARDEN CLUB

More than 100 people joined us for our special spring event in the Village Hall last month. TV gardener and local nurseryman Toby Buckland gave a wonderful talk about spring in the garden, which was followed by afternoon tea and delicious homemade cakes. Many thanks to everyone who supported us in this big venture.

April sees the return of the ever-popular ‘Gardeners’ Question Time’, with local experts Sheila Parker, Jill Wilson, Robin Telfer and Geoff Ames of Greenfingers Garden Centre. It’s at 7.30pm on Tuesday 14 April in the Village Hall Function Room. Entry £3 – refreshments served, and plants and produce for sale. Do bring along your questions for the panel.

On Saturday 9 May we’re holding our annual Coffee Morning and Plant Sale in the Methodist Church from 10am to 12noon. Lots of lovely plants and home produce for sale, and a raffle and seed swap. Entry £1 on the door (children free), which includes a free coffee and biscuits. It’s a great way to kick off the growing season.

We’re just planning our next season of talks and events. News from the Garden Club is sent out regularly by email – if we don’t have your details and you’d like to be kept up to date with what’s coming up then please do send your name and email address to [suki.commin@googlemail.com](mailto:suki.commin@googlemail.com)

You’ll also find more information about the club and forthcoming events at [www.lympstone.org](http://www.lympstone.org)

*Gail McKenzie*

## LYMPSTONE FILM SOCIETY AGM



The FilmSoc AGM will be held at 7.30pm on Friday 1<sup>st</sup> May at the Village Hall. In addition to the AGM business (which should take around 20 minutes), we’re screening *My Week with Marilyn*, starring Michelle Williams, Kenneth Branagh, Eddie Redmayne, and Judi Dench. Based on two books by Colin Clark, it depicts the making of the 1957 film *The Prince and the Showgirl*, which starred Marilyn Monroe (Williams) and Laurence Olivier (Branagh). The film focuses on the week in which Monroe spent time with Clark (Redmayne), after her husband, Arthur Miller had left the country. Bar as usual. This bonus film is free to current members and to anyone who joins on the evening. We are offering ‘earlybird’ membership for next season with 9 films for £15 for renewing members. £18 for lapsed members and £20 for new members. Cheaper than 2008 when it was £25. Earlybird offer closes Sunday May 3<sup>rd</sup>; contact Helen Dimond on 223433.

*Don Mildenhall*

## SAILING CLUB OPEN EVENING APRIL 24<sup>TH</sup>

Are you a member of the Sailing Club (or are you thinking of joining)? Please pop in between 7.30pm and 9pm to find out what's happening at the club this year or how to join the 'learn to sail' course. If you're considering joining, or you are a new member, this is the ideal opportunity to meet people and to get involved.

*Lesley Anderson*

## VILLAGE WEBSITE

Any updated information  
please contact  
Update@lympstone.org or call  
01395489506.

*Mark Reynolds*

## DIGGING FOR OXFAM

I dig / do simple garden jobs, you pay £10 an hour and it all goes directly to Oxfam 276569.

*Jenny Moon*

## OTTER ROTTERS (Garden waste collection)



Mandy Jennings, the functional head of this non-profit making organisation

has promised to start collections of garden waste as soon as is possible after they have collected a list of possible users and worked out their collection round. If you are interested in using their services you can assist them by letting them have your name and address. Their contact details are by phone on 07837 477050 or email: info@otterrotters.co.uk

NB Their normal collection day for this area is Friday. To avoid conflict with our usual EDDC collections on this day they propose to collect our garden waste on every other Tuesday.

*Chris Carter*

## EBAY SCAMS (Part 2)

3. Be wary of "private" auctions which do not disclose the names of the bidders. Scammers do not want buyers to warn each other, so they hide our identities as well as theirs. A private auction is not a defacto sign of ill intent. If everything else looks good on a sale, this should probably not be a deal breaker.

4. What is the return policy, and how much do they charge for shipping? Don't be impressed by money-back guarantees and dirt-cheap shipping. If it is a scam, they aren't going to give your money back and they aren't going to ship anything.



5. Look at the seller's feedback. Carefully! Don't just look at an impressively large number and call it good. There is a ton of useful information here if you take the time to really investigate. If it is a stolen account, they are somebody else's points anyway. But you can learn a lot:
- A. Has he bought or sold anything **recently**, and what was it? Accounts that have no recent activity are much more likely to be stolen accounts.
- B. Is this auction consistent with items bought and sold in the past? If a buyer of \$5 trinkets is suddenly selling a \$4000 drum set, take note. It may be valid, but it is suspicious.
- C. Is the item location the same for this sale as for his last sales? Does the location actually exist, or is it some fictional locale?
- D. Are his accepted payment methods the same as his last sales? If he accepted PayPal before, why is he insisting on a wire transfer or cashier's check now?
- E. The seller's positive feedback points for purchased items are not very useful to you as a buyer, so don't over-value them.
6. What else is the seller posting for sale at the time? Follow the link for Seller's Other Items. If they have a large number of unrelated big-ticket items currently for sale (musical instruments, computers, cameras, bicycles...) that is very suspicious.
7. Look at the photos. Are they just stock pictures from the company web site or are they apparently authentic photos of the item? Scammers can get pictures of anything from the web, including from other Ebay auctions. If you have seen the exact same photo in other auctions, be suspicious. Also, look at the backgrounds in the photos. Does it look like they just took their digital camera into a store and started clicking away?
8. Talk to the seller! How? Use a phone number web-site or directory assistance to verify that the person's name, location and phone number make sense. Don't be afraid to ask very specific questions about the product and sale.
9. Is the item in the correct category? Another device scammers with use to hide their skullduggery is to post items in obscure places. Instead of searching the entire Ebay universe for your item, specify your category.
10. Payment method is a very big deal. C.O.D. is great if they will go with it. Escrow.com is good (though a little pricy), and the only escrow Ebay recommends. Some criminals set up bogus sites that sound and look like Escrow.com, but do not be fooled. DO NOT use any other escrow site. PayPal is good too, up to a point, but the sale does not qualify for their \$1000 protection unless it specifies that on the posting. In that case, the best you can hope for is the

\$200 coverage extended by Ebay (minus a \$25 service fee).

If you use PayPal, use your credit card rather than your own bank account. Many credit card issuers will refund money stolen from you. It is not fail-safe, but it is another layer of protection. Never use Western Union for these transactions. Western Union's own web site will tell you that. Wire transfers and any kind of cheque is a one-way ticket to fraud.

11. Most second-chance offers are scam attempts. Real second-chance offers are **ONLY** tendered via Ebay's My Messages, not an outside E-mail account. They will not ask you to directly contact the seller. If there is a hot-link on the page, take a look at the URL it points to when you roll your cursor over it. (The URL is usually displayed at the bottom of your web browser) There are fake Ebay and PayPal sites that attempt to steal your login information. If the URL does not start with "https:" it is not a secure site. Do **NOT** log in there!

12. Finally, do not wait until the last hour of the sale to get interested in it. If it is something you want, there is some homework for you to do. Give yourself the time to evaluate things and give the seller time to respond to your questions. Do not burn bridges, but do not allow yourself to be burned.

*You are doing business with total strangers here, and don't forget it.*

Most people are decent and honest, but some aren't, and they can really mess up your day.

*Published by luiz\_b\_7*

## **LYMPSTONE VILLAGE HALL**

The AGM of the Council of Management for the Village Hall will be held at 7.30pm on Thursday 23<sup>rd</sup> April at the hall. This will hear financial and management reports for the 2014 year. The hall had a successful year in 2014 and is in a strong financial position.

There is the opportunity for new people to join the committee, which consists of a mix of representatives from village organisations and co-opted people. The hall is now raising funds for a major capital project – to entirely replace the heating system with a more flexible and economic system. We would particularly like the help of people with experience of fundraising and commercial heating.

The committee meets normally 4 times a year.

*Don Mildenhall*

## **TIED TO THE TIDE**

A big thank you to everyone who came along to the two fishy suppers with local documentary in the Village Hall last month. If you missed the



events, or would like to watch the film again, DVDs are now on sale at a cost of £7 from Brian Mather - fbmather@btinternet.com.

*Sue Mildenhall, Lizzie Hodge and Suki Commin.*

## **EXE ESTUARY TRAIL**

No incidents have been recorded in the accident book since it moved from the Newsagent to the Post Office shelf in Central Stores. Despite there being nothing recorded, several people have told me of incidents regarding both safety and abusive behaviour. For example, someone walking on the designated area for pedestrians on Station Hill was shouted at by a cyclist for being in his way, a couple of near misses at the blind corner of Sowden Lane, an accident involving a cyclist and a pedestrian and inconsiderate behaviour by large groups of cyclist occupying the whole road and disregarding other users.

Devon County Council have done none of the things they promised regarding improvements to safety, additional signs or considering seriously an alternative route for the trail through Lymptstone despite recommendations from the Devon Countryside Access Forum on the basis that The Strand and Sowden Lane were totally unsuitable for a major cyclist route. My latest letter to DCC Councillor Stuart Hughes did

not get an acknowledgement. Now that the Neighbourhood Plan referendum has been completed and the wishes or residents for an alternative route endorsed, we will be contacting Devon County Council again about the actions they have promised and also seeking the support of the Parish Council in achieving the objective of an alternative route for the village.

Please send me any video clips demonstrating the problems along this stretch of road as these all help to provide evidence of the problems. We do not wish to take the approach of Devon County Council that the road is considered safe until a fatality occurs!

*Judith Carter  
Trail Action Group*

## **LYMPSTONE WI**

Our President, Diana de la Rue, began our Annual General Meeting on Wednesday the 1<sup>st</sup> April with a report of activities over the previous month, as well as information about future events. Members had joined forces with the Garden Club on Tuesday the 24<sup>th</sup> March for a very enjoyable visit to Bickton College. Luckily the weather stayed fine for this, since it included a tractor and trailer tour of the Bickton Estate. The first litter pick of the year took place at the end of

March, and the next is scheduled for Friday the 24<sup>th</sup> April at 11 am.

The WI Spring Group meeting will be held at 2 pm on Monday the 13<sup>th</sup> April at Glenorchy Church Hall in Exmouth, at a cost of £3. This will be followed by the Spring Council meeting on Wednesday the 22<sup>nd</sup> April at Torquay, where Doctor Alice Roberts will once again be our lead speaker. On Saturday the 16<sup>th</sup> May we will be teaming up with another Lymptone group and joining members of the History Society to visit Torre Abbey. The date for our Summer Supper, at the Sailing Club, has been confirmed for Thursday the 23<sup>rd</sup> July. We will take this opportunity to celebrate the WI Centenary with displays of memorabilia and a Centenary Cake. Refreshed by chocolates, tea and biscuits, members then proceeded to the business of the AGM. We discussed and voted for the Resolution – requesting the government to remove the distinction between continuing nursing and social care –to be put forward at the National Federation’s Centenary Annual Meeting, which will be held at the Albert Hall on Thursday the 4<sup>th</sup> June. Diana de la Rue will be

representing Lymptone and Woodbury WI’s at this event. Heather Stratford and Janet Ward then presented the Treasurer and Committee Report respectively.

Our next meeting will be held on Wednesday the 6<sup>th</sup> May at 2.30 pm in the Committee Room of the Village Hall, where Mr Frank Letch MBE, the Mayor of Crediton, will give his “Feet First” talk about his work as a Trustee of Reach children’s charity and the ways in which he overcomes the challenges of thalidomide.

We are very pleased to welcome anyone who thinks she might be interested in finding out about the Lymptone WI. For more information please phone Diana de la Rue on 01395 274099, find us on the village website, or just come along to one of our meetings.

*Lindy Newton*

**DISCLAIMER** This news letter is compiled from emails sent to the editor by numerous people and very little of the information is checked before publishing which is done in good faith.

*.Chris Carter, Editor*



# THE GLOBE INN

**The Strand    Lympstone**  
**Telephone 01395 263166**

## **Live Music April**

**Wed 8<sup>th</sup>** – Lympstone Folk Night

**Fri 10<sup>th</sup>** - Just Misbehavin'

**Fri 17<sup>th</sup>** – The Real Me

**Fri 24<sup>th</sup>** – Roger Styles

## **May**

**Fri 8<sup>th</sup>** - A38's

**Wed 13<sup>th</sup>** – Lympstone Folk Night

**Fri 20<sup>th</sup>** – Ian Boyd

## **Special Events & Offers**

### **New Menu of the Day**

Available Monday to Friday until 2pm

1 Course only £4.95, 2 Courses for £6.95, 3 Courses for £7.95

Collect your loyalty stamps and receive your 7<sup>th</sup> meal free!

**Every Tuesday** is Quiz night from 9pm

### **Wednesday night**

2 dine from our grill with a complimentary bottle of house wine for only £25

### **Every Thursday is Fish Supper Night**

Eat in or Takeaway available for only £7 from our specially selected menu

### **Sunday Lunch**

Served 12 lunch until 8pm

Choice of 2 local meats and vegetarian options

1 course £7.95, 2 Courses £9.95, 3 Courses £11.95

Specials Board also available

## **HOURS**


Opening daily from 12 till Late

Food Served Monday - Friday 12 till 2 & 6 till 9

Saturday All day from 12 till 9, Sunday All day 12 till 8

 The Globe Inn  @GlobeinnLymp






**East of EXE**

Exceptional Estate Agents

**for East Devon,  
Topsham and Exeter**



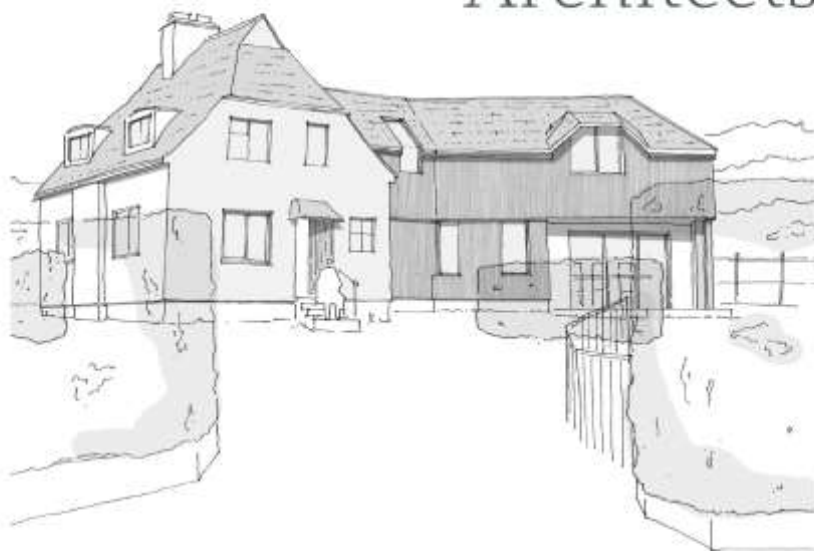
[www.eastofexe.co.uk](http://www.eastofexe.co.uk) 01392 877240

**French and Italian tuition** available with qualified and experienced teacher.  
Can teach all levels up to Alevel. Please email [clairearrowsmith@hotmail.com](mailto:clairearrowsmith@hotmail.com)  
for more info

***NEW- EVENING ZUMBA !***

Want to get in shape, feel fitter,  
more energised and mobile? Enjoy  
a fun, informal atmosphere?  
Whatever your age or fitness level,  
try Zumba and see the results!  
Starts Thursday 16<sup>th</sup> April 7.30pm,  
Lympstone Methodist hall. £5  
drop-in. Contact Susan on  
07583 242719 or  
[susanmason99@hotmail.co.uk](mailto:susanmason99@hotmail.co.uk)  
Also Wed 9.20 - 10.20am at  
Lympstone Youth hut. *Bring a  
friend along for free first class!*

# Hilton Barnfield Architects



**We offer a personal, creative and professional design service for your project.**

- Design expertise
- Planning applications
- Building Regulations documentation
- Detailed drawings
- Construction co-ordination

Call for a **free initial consultation:**

**01395 224 829**

**[www.hiltonbarnfield.co.uk](http://www.hiltonbarnfield.co.uk)**





**COUNSELLING THERAPY** Jenni  
 Gates MA, Adv Dip Couns, MBACP.  
 07565 288004 Email  
 jennigatestherapy@gmail.com.  
 www.jennigatestherapy.co.uk

**ROOFER.** Specialist in roof tiles and  
 slates, fascias and guttering, repairs and  
 replacement, general maintenance. Call  
 Liam on 01395 277236 or 07528 970  
 950 email: liam@liamandemma.com.

**ANDY WESTERN - GARDENER**  
 established in Exmouth since 1992. I  
 live in Lypstone and provide regular  
 grass cutting services and hedge  
 trimming. Tel 01395 741656.

**SIMON QUICK THE LOG MAN**  
 For all your log, coal, kindling & gas  
 supplies Tel 01395 267490

**ELECTRICIAN** Specialising in  
 domestic work; Happy to do small jobs.  
 Call Simon on: 07985 963075

*Adverts cost 60p a line or £12 to £15 a  
 box or £90 a page (with reductions on  
 runs).*

## JEFF CROMPTON

Greenways, Courtlands Lane,  
Lympstone

For Superior Quality Home  
Improvements and All Types of  
Building Work including Kitchens &  
Bathrooms

Tel: 01395 272815

Mobile: 07768 282 129



## LYMPSTONE HAIR & BEAUTY STUDIO

**WALK IN's AND EVERYBODY  
WELCOME!**

Perms, Barbering, Shampoo and Sets,  
Colouring, Highlights, Foils,  
Massages, Waxing, Gelation Nails,  
Facials, Makeovers, Tanning and more  
**.For an appointment call us on 01395  
274089 Or text only on 07552313653**

## DOG GROOMING



Kind & Qualified Groomer.

Commissions for PET PORTRAITS  
in pastel also undertaken.

Make Superb Presents.

(Examples of work can be viewed).

Tracey Crompton, Greenways,  
Courtlands Lane, Lympstone.

Tel: 01395 272815 /07973 986 268.

## FOOD WITH FLAIR CATERING

Small and Large Events -  
Menus to Suit your Budget  
Telephone Shirley or Michael  
on 265147 or see our Website  
[www.foodwithflair.co.uk](http://www.foodwithflair.co.uk)

## CLOCK REPAIRS

Terence C. Matthews - Horologist  
Westminster Chimes

Wall Clocks

Grandfather / Grandmother Clocks

Dial Clocks



Long Case Clocks

Carriage Clocks

Free estimates and house visits

Tel: 01395 273563

Find some winter sunshine!

**Comfy casa near the Costa Blanca,  
Spain**

Peaceful, two-bedroomed home. Roof  
terrace, gorgeous views, communal  
pool and tennis. Beaches, cycling, golf,  
hiking and more. Suits all ages.  
Flights from Exeter & Bristol

Lympstone residents 15% discount

Tel: 07986 607610

[www.algorfaholiday.com](http://www.algorfaholiday.com)

---

## DustAway



All Work and no play, we are here to help

Friendly Efficient Cleaning Service

Lympstone Based

Weekly, fortnightly, monthly

One off cleans ie moving house, holiday lets,

End of tenancy cleans, just redecorated or a spring clean

- We also offer an ironing service

All materials supplied. Fully insured

Please call Tracey 07727168817 or Jill 07818484864

[www.dustaway-cleaning.co.uk](http://www.dustaway-cleaning.co.uk)

---

**OFFICE SUPPORT** Looking for support with secretarial, administration, marketing, proof reading, print and design purchasing, PR or copy writing?

Phone 01395 275436 or 07587 146223. From £10 per hour.

**FRENCH HOLIDAY LET**, Vendee: overlooking golf course and only 10 mins drive from superb beach. 3 bedrooms, 2 bathrooms, communal swimming pool and tennis courts. From just £350 per week. Tel 01395 272032 or email:

[annhurley1@sky.com](mailto:annhurley1@sky.com)

**CYGNET COTTAGE** - Quiet self-catering cottage just yards from the foreshore. Sleeps 3/4. From £70 per night. Visit [www.cygnetcottage.net](http://www.cygnetcottage.net), or ring Demelza on (01395) 272243.

### NEED A HAND AT HOME?

Sarah can help! Home help/cleaning/ironing/shopping/dog walking/light gardening.

07791 944938 Refs available.

DBS checked

## SMALL ADS

### **LYMPSTONE GREETING CARDS AND POSTCARDS**

Scenic photographs of your village - from the harbour, boats and washing-lines.....to sunsets and Lymptone Life! Hopefully back soon but meanwhile available from Frances Longhurst 263495

**PREGNANT?** Experience the magic of birth: release fear and tension, remain conscious, deeply relaxed, in control. Hypnobirthing antenatal classes: for more info phone 01392 412767 or see libbyclaphamhypnotherapy.co.uk

**PICTURE FRAMING.** For all your framing requirements; also frame restoration & chair caning. Caro Ambridge 01392 877460, Topsham.

### **DAWN 'TIL DUSK**

Creative Gardening service Routine maintenance, Designs & Creates. 0786 6566 883 dawnc@live.co.uk

**TUTOR AVAILABLE** Local experienced Primary School Teacher available to teach Maths and English. Can also prepare children for SATS, Colyton and 11+ exams. Reasonable rates. For more information call Becky on 07806554106 or email: beckychurch\_@hotmail.co.uk

**PIANO with a VIEW** Lessons for all ages, beginners and improvers, "purely for pleasure" and ABRSM exams to Grade 8. Theory to Grade 5. Tel: Judy Joss (BA Mus, Dip Ed) on 222749

**MATHS TUITION** Experienced tutor available to teach primary to GCSE level maths. Reasonable rates Tel: Jane Moffatt on 279952 or **07730877889**

**PRISTINE CLEAN** - Domestic ironing and cleaning services. Local lady. Call Niki - 01395 740727

**FOOT HEALTH PRACTITIONER** - Lindsey Waddell MAFHP. Nail Cutting and Treatment of Corns, Callus and Verrucas. Home Visits. 01395 263496

**PROPERTY MAINTENANCE** - Carpentry, Flooring, Fencing, Gates, Decking, Bathrooms, Kitchens, General Repairs. Free advice & estimates. James Waddell 01395 263496

### **ACCOMMODATION**

**WITHALL'S HOUSE BED AND BREAKFAST.** A modern and spacious home close to the heart of the village. Ample parking and flexible accommodation. Call Pete and Jan Hardy on 01395 488123 Or visit [www.lympstonebedandbreakfast.co.uk](http://www.lympstonebedandbreakfast.co.uk)

## WHATS ON

### APRIL

**5** Easter Sunday  
**10** PCSO at Central Stores  
**10** Easter Bonnet Comp.TAP  
**10** Film What Maisie Knew  
**11** Beetle Drive, Parish Church  
**15** EDDC Report to Cabinet  
**15** Colour Workshop  
**16/17/18** Play, "Plaster"  
**17** Talk TAP  
**18** Tennis Coaching  
**18** Afternoon Tea, Parish Church  
**18/25** Meet District Councillors  
**18** Craning Afloat  
**23** Village Hall AGM  
**24** Litter Pick WI  
**24** Sailing Club Open Eve.  
**24** Mobile Library  
**24** Talk TAP

### APRIL Cont

**26** Players Social Evening  
**26** Parish Church AGM  
**24** Sailing Club Open Eve.  
**24** Mobile Library  
**24** Talk TAP  
**26** Players Social Evening  
**26** Parish Church AGM

### MAY

**1** AGM Lympstone Film Soc.  
**6** WI meeting  
**9** Exmouth Shanty Men  
**11-22** Will Writing  
**18** AGM Friends of Underhill  
**24-31** Art Exhibition  
**25** Village Trail



# Optima Graphics

Topsham Ltd  
silk screen, digital & litho printers

*We provide a high quality, good value  
and prompt printing service.*

<b>Silk Screen</b> Vinyl Stickers Estate Agent Boards Printing on: Metal, Acrylic, Plastic, Wood	<b>Large Format Digital</b> Banners Display Panels Window Graphics Pull-up Display Stands Magnetic Vehicle signs	<b>Litho</b> Brochures & Leaflets Stationery Labels & Invitations Pads NCR sets
---	---	--

**T: 01392 873822**  
**E: [sales@optimagraphics.co.uk](mailto:sales@optimagraphics.co.uk) W: [www.optimagraphics.co.uk](http://www.optimagraphics.co.uk)**  
20b High Street, Topsham, Exeter, Devon EX3 0EA