

PARISH COUNCIL MEETINGS

The Parish Council decided to cancel the meeting scheduled for 27th April, in view of the elections.

The next meeting of the Parish Council will be the annual meeting which will take place at 7.30pm on Monday 18th May 2015 in the Village Hall. This is when the Chairman for the next year and the Vice Chairman are elected and if needed, the Planning Committee will be appointed. As you should know, there are twelve people standing for election, to fill eleven seats. Some existing Parish Councillors are not standing for re-election and so there should be at least two new faces on the Parish Council. At 7.00pm on the same night, there will be the Annual Parish Meeting. This is not a Parish Council meeting but is a meeting of all electors for the parish. Parish Councillors and Reps from any Groups in the Village can come along and let electors know

what they have been up to over the last year and what they propose to do for the next year. It is also a chance for any elector to ask for a community discussion about anything that affects life in Lympstone

Election Day – Thursday 7th May 2015. I guess that everyone knows about the election. In Lympstone, you will have three elections and so you will get three ballot papers when you go to the Polling Station in the Village Hall. You have a choice of 11 out of 12 for the Parish Council, 2 out of 3 for the District Council (EDDC) election and 1 out of 5 for the General election. It might sound confusing but it will be straight forward on the day. The Election Staff are there to help you.

Cont

Clerk to the Council: A J Le Riche, DMS, 43 Salisbury Road, Exmouth, EX8 1SL, Tel 279665/ 07866 535580 clerk@lympstone.org

Editor: Chris Carter, Tel 274104. Copy Editor – P Acca, Deputy Editor – W. Headeach
Advertising - Liz Griffith: Lympstone web site – www.lympstone.org
Copy deadline for the next issue – Tuesday 2nd June, 10am
Copy by e-mail, if possible to chriscarterathome@hotmail.com
The Editor at Hillcrest, Greenhill Ave, Lympstone, EX8 5HW
Distribution by the Telfers, Tel 272275 and others

Cont

Please use your vote. You should never think that a vote is wasted. Our country is based on democracy and our systems are first class. The outcome is never certain and so you should not be put off from voting because you think that the overall outcome is already known. The Parish Council is confident that each of the 20 candidates would say the same – your vote always matters.

Clerk to the Council: A J Le Riche, DMS, 43 Salisbury Road, Exmouth, EX8 1SL, Tel 279665/ 07866 535580 clerk@lympstone.org

THE PARISH CHURCH



Annual Parochial Church Meeting

The meeting was held in two parts as explained in last month's Herald. The new churchwarden until April 2016 is Richard Giles who will continue for another year. Mary Blair stepped down, after being in post for as long as allowed, and was warmly thanked for all her work. She also stepped down from the P.C.C. but will continue in other roles.

The Deputy Churchwarden will be Demelza Henderson.

Jill Wilson was replaced as secretary by Brian Mather. She was thanked for her co-ordination of so many church matters.

The meeting elected Bobby Brunt as the new P.C.C. member.

The P.C.C. appointments were as follows: Chairman Revd Sid Humphries, Deputy Chairman Richard Giles, Secretary Brian Mather, Treasurer John Lupton, Deputy Churchwarden Demelza Henderson.

Committee Appointments were made for the following committees: 'Standing, Building and Finance, Social Group and Children, Youth and Worship. For those who do not know the 'Standing' committee is a small group of senior P.C.C. members who may take quick decisions when the need arises.

Committees which operate over the Mission Community have Lympstone representative as the committees cover: Discipleship and Evangelism, Mission Action Plan, Social Group, Communication and Publicity, House Groups and Youth and Family.

The PCC approved the renewal of the licensing of Demelza Henderson as Licensed Reader.

In the finance report the meeting heard that the church had made a small operating excess of income over expenditure. This in spite of the running costs of the church being over

£50,000 of which just over half goes directly to the Diocese to pay for the clergy stipends and diocesan work. The church has photovoltaic panels on the roof which contributed over £1,700 in 'Feed in Tariff' payments.

Copies of the annual reports by church groups such as the bell ringers and the meetings of the Deanery Synod are available in church for anyone to read.

Message from Revd Sid – I have received numerous comments, regarding Holy Week and Easter, thought provoking, wonderful, meaningful, real sense of belonging to a community, Christ's love in action, to name but a few.

It would be difficult to name all who contributed towards Holy Week and Easter Day as there are so many who contributed so much. What I do sense is a deep presence of love and caring towards each other.

Ascension Day 14th May at 7.30 pm –
Sung Eucharist for Ascension Day

Brian Mather

FROM THE EDITOR

Tony, our Clerk, has assumed (see above) that this copy of the Herald will reach you before the 7th of May but this issue was unscheduled and I was unprepared and distribution by The Telfers and team was in a bit of a rush so my apologies if you did not

receive your copy until after the election

Contributors please note that your next deadline will be the 2nd of June – for the June issue of course.

Chris Carter

VILLAGE WEBSITE

The Village Notice Board on the Village Website (www.lympstone.org) can be used to advertise articles for sale or wanted, lost or found, items to give away, tend or borrow and services offered. Your notice will stay on the Notice Board for a month after it has been posted. If you would like it to continue longer, you will need to re-submit it. This service is completely free. To submit items to the Notice Board, please email noticeboard@lympstone.org. (Please attach a picture if possible)

Mark Reynolds

DORIS BEATTIE

Doris would like to thank everyone for their lovely cards and gifts of flowers in celebration of her 100th birthday.

Mary Blair

(Apologies for not getting this in the previous issue Ed)

AND A NIGHTINGALE SANG...



...in myth and legend, in fairy tale and poetry, in song and music, in Old Road, Tiverton and in Berkeley Square. With pictures and recordings, and with a live performance on a very special musical instrument, Harland Walshaw talks about the most magical of songbirds. You will hear the nightingale as you have never heard it before, and experience the very first outside broadcast as it was made some 90 years ago. For a thousand years the nightingale has been the most celebrated songbird in the western world. Come to the Village Hall at 3pm on Sunday afternoon, 17th May, as the nightingales themselves are returning from their African winter quarters, and fall under their spell. Tickets are £3, and can be bought on the door, which will open at 2.30pm. Tea will be served. There will be magic abroad in the air.

Harland Walshaw

HARRY POTTER VILLAGE TRAIL FOR FAMILIES

Following on from the Easter Egg hunt in church this year and two very successful themed trails around the village in previous years, there will be a Harry Potter themed trail on Bank Holiday Monday 25th May, starting at

2.00 pm at the Parish church. Entry £1 /person or £4 for family upto 6 persons

Children and youngsters with parents, grandparents or carers can have fun following a route around the village and solving clues. It will end back at the church.

Why not dress up as a Harry Potter character, come and enjoy yourself. Although we can't promise the Hogwarts Express or any new spells, there will be Harry Potter clues and characters. Tea and refreshments will be available at the end.

Ian Stratford
Church Social Committee

THE PLAYERS ARE BACK!



Thank you to all of you who came to our recent production of 'Plaster' and 'Separate Tables'. It was good to be back in front of such appreciative audiences. We have had much favourable comment. A review has been posted on the Lymptone Village website (under Lymptone Players) together with some excellent pictures taken by Bill Boaden. You can add your own comments there too if you wish.

Players' Social Evening

We will be having our usual informal gathering in the Redwing from 8.00pm on Sunday 31 May. If you are interested in possibly being involved

in our activities - or just fancy a drink please do drop in and join us.

Clive Wilson

FURRY DANCE CREAM TEAS



Our annual cream tea event will be on Sunday 14th June between 2:30 and 4:30pm in the beautiful setting of the cliff-top garden at Four Winds, Sowden Lane. Relax and enjoy a delicious cream tea as the tide flows in and the estuary looks at its most picturesque. By popular request the Lymptone Training Band will be playing a musical selection, directed by Roger Riggs. As usual, archive photographs will be on display and if you have any photos of the Furry Dance from previous years, that you would like to share, please bring them along.

Chris Doak

EXMOUTH SHANTY MEN'S RUN ASHORE IN LYMPSTONE

There is still just time to buy tickets for Exmouth Shanty Men's visit to the Village Hall on Saturday 9th May. We are promised a trip – to Australia and back, with rollicking sea shanties and an exploration in song of some topics close to sailors' hearts: beer perhaps, the fairer sex for sure and some heroes from past deck lore.

Performing in costume of the time, four members of the crew hail from "North Exmouth" (or Lymptone, as we know it better) – Tony Day (anchorman), David Wright (ship's doctor), Ian Herbert (new cabin boy) and Helen Redding (gracious Helen Highwater).

Doors and bar open at 7.30pm for an 8pm start. Tickets £8 (£1 for under-16s) available from the Lymptone Entertainments "box office" at 2 Brookfield Cottages, The Strand, or call 07516 322853, or 01395 272243. Or feel free to approach Viv or Tony Day direct!

Viv Day

BROADBAND

BT Openreach has started work to provide broadband in the lower village. A new cabinet has been fitted near the toilets in the car park and engineers have been seen fitting the electronics and making connections. If you are in the area served (The Strand, Underhill and adjacent houses), you should hear from your broadband provider once the work is completed offering 'superfast' service as an option (probably at a higher price). The Herald will carry information as it becomes available.

Don Mildenhall

POLICE REPORT



Between the 21st and 23rd of March a vehicle parked in Underhill car park had 4 alloy wheel discs stolen. If anyone has any information on this theft, please contact police quoting CR/024618/15.

A burglary occurred on the 3rd April in Lymptone in which a male was seen dragging items out of a shed. The male was interrupted by the owner at which point he left. An investigation is ongoing. CR/022486/15 refers.

Between the 3rd and 9th April a property in the area of Underhill was burgled. The home owner was not at home at the time. If anyone has any information regarding this incident, please contact Police on the details below quoting CR/04267/15.

There have been two burglaries in the village of Lymptone in April, in which high value pedal bikes were stolen. One of the burglaries occurred at a property overnight on the 17th April in which 3 pedal bikes were stolen from an outbuilding. The bikes are described as a dark grey £600 Cannondale mountain bike, A blue F400 Cannondale mountain bike and a black Giant hybrid. The other burglary occurred between Thursday 9th and Sunday 12th April in which a white cube road bike was stolen from a garden shed. The bike was well secured and considerable efforts were

made to remove the bike. If anyone has any information regarding these burglaries please contact Police quoting CR/026539/15.

I would like to ask all residents to be very vigilant at this time. Please make sure that your property is secure at all times and keep doors and windows locked. If you see any person or vehicle acting suspiciously, please contact Police as soon as possible.

On the 12th May I will be outside the Central Stores in The Strand between 2pm and 2.30pm. This is an opportunity for residents to come along and speak to me and raise any policing concerns or issues, or simply say hello!! (I am a front line officer and sometimes we get called away to incidents, if I should be called away, I will reschedule soonest)

*PCSO Sarah Trayhurn 30110
Enquiries 101 Emergencies 999
sarah.trayhurn@devonandcornwall.p
nn.police.uk*

PRESCHOOL FUND RAISING

Whilst we wait for our funding bid to DCC to proceed, day to day fund raising continues! A big thank you to our families and friends for their support so far this year. Planned next is a Prize Draw (with prizes totalling £1,300 , (which include a Fine Art original sketch from Jeff Rowland, one of the UK's biggest publishing

houses most popular artists worth £650 and a stunning contemporary Canvas by Adam Hart, one of the North's finest) which will be drawn at the PreSchool on 1st June at 3pm accompanied by a Table Top Sale.

On 13th June Caroline Armstrong from the preschool (and small support team) and Hayley Reynolds from Lypmstone Primary, will be donning their lycra and completing a non-stop cycle all day outside The Swan to raise money. Please come along and show your support and give generously to support the children of our village. A huge thank you to Matt and Amy at The Swan for their support. If you would like to offer support with fundraising or help the preschool email us at lypstonepreschool@yahoo.co.uk

Vicki Drinkwater

OPEN GARDEN

Ki & Mona Moudry have confirmed details about their Open Garden on Sunday 7th June 2pm til 5pm at Sowden Orchard for Exmouth & Lypmstone Hospiscare.

On the day as well as enjoying the garden, there will be interesting plants for sale and a display of Bonsai plants. If you have room after your Sunday lunch then you might be tempted to indulge in a cream tea or a cake with a cuppa. Parking is an issue

so we are restricting our advertising of the event to Lypmstone hoping that a walk through the village will ensure there is no parking problem - there will be a very few disabled parking places available. No dogs please. Entrance will be £2.50 on the gate.

Francis Longhurst

OTTER ROTTERS (Garden waste collection)

Otter Rotters is an established not-for-profit community enterprise based in East Devon. Their primary aim is to find a sustainable way to tackle, at a local level, the growing problem of domestic waste disposal, in particular organic matter.. They believe that waste is a resource which should be processed, re-used or recycled as near as possible to where it came from. Bags are available from Central shop in the village. Their contact details are phone 07817 477050 or email: info@otterrotters.co.uk

Wendy Headeach (Dep.Editor)

DIGGING FOR OXFAM



I dig / do simple garden jobs, you pay £10 an hour and it all goes directly to Oxfam 276569.

Jenny Moon

FRIENDS OF THE CHURCH LOTTERY



The Friends would like to say a big thank you to all who have bought tickets for the 2015/16 round of the Lottery, raising nearly £1600 towards maintaining the fabric of the church. This sum will reduce of course as prizes to the winners are paid out. And the first lucky £25 winner of the new round is Angie Connolly at the Globe.

Clive Wilson

CRICKET, LOVELY CRICKET!



Forget the miseries of the cricket World Cup, England are winning again! And now you have the chance to Root (?) for your local heroes as the Gentlemen of Lymptstone take on the Gentlemen of St Peter's (and possibly Gentlewomen) in their annual charity match at St Peter's School. The setting is idyllic and In keeping with traditional village cricket, there will be - we hope - much betting on the final scores! And prizes for the most sixes! Special rules Boycotting boring play and with strictly independent umpires - both from Lymptstone, as it happens!

When? Thursday 11 June starting at 6.00pm. As well as the guarantee of

entertaining cricket there will be other diversions – the Lymptstone Training Band , a barbecue and bar, ice cream and other attractions for all the family . What better way to celebrate a lovely summer evening? Admission is free and there is ample parking space. It's a good idea to bring something to sit on, whether it's a chair or a rug.

All funds raised go to help maintain the fabric of Lymptstone Parish Church, our oldest and finest building. Do come along!

Clive Wilson

Friends of Lymptstone Parish Church..

LYMPSTONE ART GROUP EXHIBITION



The Lymptstone Art Exhibition will be held in the Village Hall starting Sunday 24th May and running until 2pm on Sunday 31st May. Apart from the last Sunday, opening times are 10am to 5pm. Entry is £1 for Adults but free for children. The exhibition has been highly praised in previous years and is well worth a visit. On display are paintings and 3 D art. Most items are for sale and cards and prints are also available for purchase. Hope to see you there - tea coffee and homemade cakes will be available

Judith Carter

**THE ANNUAL
SUMMER PARTY (36th
Sherry Morning)**



Proceeds of the Grand Summer Draw going to Anti-Slavery International

Sunday 26 July 2-6pm at The Globe
As many will know “The Sherry Morning” has now evolved into an annual Summer Party at The Globe, Lypmstone, courtesy of Ange and Mike. Complementary gourmet food is kindly provided, and live music in many forms also take place with No Admission Charge!

The Grand Summer Draw (with over £1500 of prizes!) provided £2000 or more to the work of Anti-Slavery International. Draw tickets are now on sale at £1 each, or £10 per book, and I hope to be calling on our regional donors as soon as I can. If anyone else would like to help sell draw tickets, please phone me on 01395 274485. There are also A3 posters advertising the Annual Summer Party and the Grand Summer Draw – modern slavery is known in the South West – I attended a conference (with 250 others) at the Eden Project in Cornwall on modern slavery on 2nd March. There is also going to be a similar conference in September in Devon. Thank you for all your support.

Graham Martin

LYMPSTONE WI

The next WI meeting is on Wednesday 6th May 2.30 pm. In the Committee Room, Village Hall. The speaker will be Frank Letch, who will give a talk on Thalidomide "Feet First". Everyone welcome.

Still time to join the Lypmstone History Society and the WI's combined outing to Torre Abbey, Torquay on Saturday, 16th May. Tickets in advance for the Abbey £7.00 from Diana Letcher. 01395267693

Diana Letcher

**WE WANT TO WALK YOUR
DOG!**

- Trustworthy mother & daughter team with a combined 50 years of experience of owning and caring for dogs, available to walk your furry friends in the day, in the evenings or at weekends! Small animal pet-sitting also possible. Based in Lypmstone village. Very reasonable rates. Please call Roxanne or Lyn on 07934916079 / 07940 516694 or email roxhackett@gmail.com
See Advert.

DISCLAIMER This news letter is compiled from emails sent to the editor by numerous people and very little of the information is checked before publishing which is done in good faith.

.Chris Carter, Editor

CRANING-IN TOOK PLACE ON SATURDAY, 18TH APRIL.

This offered excellent photo opportunities, from all angles, for camera buffs.

Much preparation and planning is needed to ensure a smooth operation.



Photos courtesy of Messrs Crisp and Jupp

EXE ESTUARY SPRING CLEAN UP Saturday 9th May 2.30pm – 4.30pm
Meeting at Imperial Recreation Ground Slipway. Free cruise, buffet and music (limited spaces).

THE LOOKOUT

NGS Open Garden 2-5pm 26th June, 2-6pm 28th June

Look in at The Lookout, Lymptone this June when the garden is opening for The National Garden Scheme, which raises millions of pounds each year for charities including Macmillan Nurses, Marie Curie & Help The Hospices.



Featured on Alan Titchmarsh's recent TV series **Britain's Best Back Gardens**, this 2 acre wildlife friendly, estuary-side garden has been lovingly created from a derelict 1920's shellfish factory.

Naturalistic seaside planting designed to blend the garden with its surroundings, creates that relaxed, washed up on the beach feel. A short circular walk takes you from a small jungly area, passed banks of ornamental grasses, through a wild flower meadow to a pond, into a fern filled copse and then back above the shore to a Mediterranean courtyard. There are numerous places to stop and take in the extensive views, estuary bird life & salty air.

Cream teas, refreshments, plant stall, giant sandpit for children with buckets & spades, Love Local pop up shop presenting a range of hand crafted, quality gifts.

Some narrow gravel paths, slopes & steps so limited disabled access. No dogs except Guide Dogs

Adults £4, accompanying children free. Sign posted parking in adjacent field if weather permits. Otherwise park in village car park, a short stroll away. Nr Exe Estuary Trail, plenty of bike parking.

Map & full details on www.ngs.org.uk & in The NGS Yellow Book.

WG **Wilkinson
Grant & Co**

PROPERTY & ACQUISITION AGENTS

People of Lymptone... are you thinking of selling your home?

As a resident of Lymptone and a local estate agent, I am well aware of the very many benefits of living in this much sought-after, lovely village and I believe the in-depth local knowledge this affords, gives me a huge advantage when trying to sell your home and get the best price.

At Wilkinson Grant & Co, this local knowledge is supported by an award-winning professional team including in-house surveyors, financial and legal experts with a track record of achievement dating back over 20 years, which combine to ensure that your property move is handled with complete professionalism from start to finish.

**For free, confidential advice please contact
Joel Moore in the Topsham office**

Telephone 01392 875000
j.moore@wilkinsongrant.co.uk



THE GLOBE INN



The Strand Lympstone
Telephone 01395 263166

OPEN DAILY from 12 'til late

LIVE MUSIC

MAY:

Fri 8th – A38's

Wed 13th – Lympstone Folk Night

Fri 29th – Eat The Rich

JUNE:

Fri 5th – Go Tell Alice

Wed 10th – Lympstone Folk Night

Fri 12th – Ian Boyd

Fri 26th – The Peaceful Hooligan

FOOD SERVED

Monday to Friday 12 till 2 & 6 till 9

Sat All day 12 till 9, Sun All day 12 till 8

Menu of the Day available Monday to Friday to 2pm

1 Course only £4.95; 2 Courses for £6.95; 3 Courses £7.95

Collect your loyalty stamps & receive your 7th meal free!

Wednesday Nights, 2 dine from our grill with a complimentary bottle of house wine for only £25!

Thursday is Fish Supper Night

Eat in or Takeaway for £7.95 from our specially selected menu.

Sunday Lunch

Served 12 lunch until 8pm

Choice of 2 local meats and vegetarian options

1 course £7.95, 2 Courses £9.95, 3 Courses £11.95

Specials Board also available

Every **Tuesday** is Quiz Night from 9pm

OUR NEW SPRING/SUMMER MENU IS OUT NOW!

Why not follow us to keep up to date with our events and special offers

The Globe Inn @GlobeinnLymp





Exceptional Estate Agents

for East Devon,
Topsham and Exeter



www.eastofexe.co.uk 01392 877240

French and Italian tuition available with qualified and experienced teacher.
Can teach all levels up to A level. Please email clairearrowsmith@hotmail.com
for more info

DOG walking and Pet- sitting. Call Roxanne or Lyn
on 07934916079 / 07940 516694 or email roxhackett@gmail.com

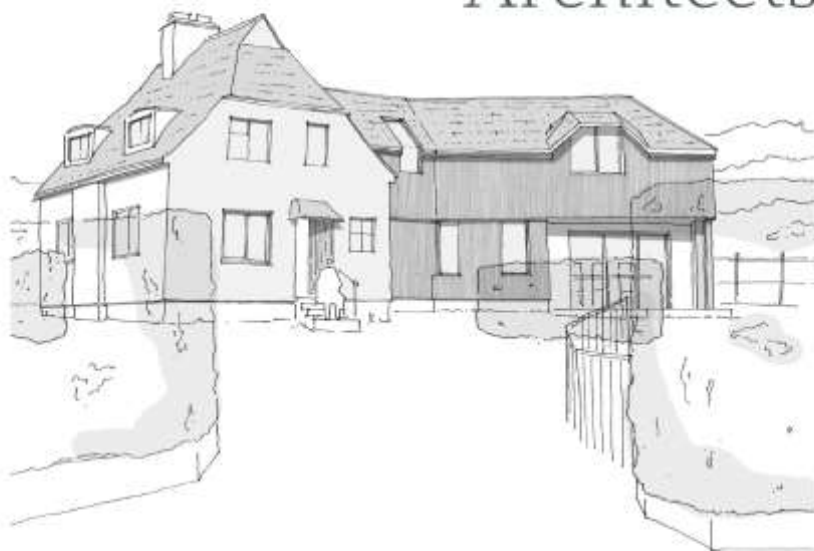
*Lympstone preschool is proud to present our
Summer Prize Draw...*

Amazing prizes include:

- Fine Art Originals*
- Limited Edition Collector Books*
- Pamper Hamper from Exmouth's finest
Beauticians*

*Tickets £5 each via 07792846555 or email
lympstonepreschool@yahoo.co.uk*

Hilton Barnfield Architects



We offer a personal, creative and professional design service for your project.

- Design expertise
- Planning applications
- Building Regulations documentation
- Detailed drawings
- Construction co-ordination

Call for a **free initial consultation:**

01395 224 829

www.hiltonbarnfield.co.uk



COMPUTER REPAIRS

ELECTRO COMPUTERS

NO FIX - NO FEE

01395 548151 / 07944 051987



PETER J ACCA
 Property Maintenance
PVCU WINDOW REPAIR SPECIALIST
 Replacement Double Glazed Units

thesaccas@yahoo.co.uk
 07801365097
 01395489791

53 Evergreen Close
 Exmouth EX8 4RR



COUNSELLING THERAPY Jenni Gates MA, Adv Dip Couns, MBACP. 07565 288004 Email jennigatestherapy@gmail.com. www.jennigatestherapy.co.uk

ROOFER. Specialist in roof tiles and slates, fascias and guttering, repairs and replacement, general maintenance. Call Liam on 01395 277236 or 07528 970 950 email: liam@liamandemma.com.

ANDY WESTERN - GARDENER established in Exmouth since 1992. I live in Lypstone and provide regular grass cutting services and hedge trimming. Tel 01395 741656.

FRENCH AND ITALIAN TUITION

available with qualified and experienced teacher. Can teach all levels up to Alevel. Please email clairearrowsmith@hotmail.com for more info.

SIMON QUICK THE LOG MAN

For all your log, coal, kindling & gas supplies Tel 01395 267490

ELECTRICIAN Specialising in domestic work; Happy to do small jobs.

Call Simon on: 07985 963075

Adverts cost 60p a line or £12 to £15 a box or £90 a page (with reductions on runs).

JEFF CROMPTON

Greenways, Courtlands Lane,
Lympstone

For Superior Quality Home
Improvements and All Types of
Building Work including Kitchens &
Bathrooms

Tel: 01395 272815

Mobile: 07768 282 129



LYMPSTONE HAIR & BEAUTY STUDIO

**WALK IN'S AND EVERYBODY
WELCOME!**

Perms, Barbering, Shampoo and Sets,
Colouring, Highlights, Foils,
Massages, Waxing, Geleration Nails,
Facials, Makeovers, Tanning and more
**For an appointment call us on 01395
274089 Or text only on 07552313653**

DOG GROOMING



Kind & Qualified Groomer.

Commissions for PET PORTRAITS
in pastel also undertaken.

Make Superb Presents.

(Examples of work can be viewed).

Tracey Crompton, Greenways,
Courtlands Lane, Lympstone.

Tel: 01395 272815 /07973 986 268.

FOOD WITH FLAIR CATERING

Small and Large Events -
Menus to Suit your Budget
Telephone Shirley or Michael
on 265147 or see our Website
www.foodwithflair.co.uk

CLOCK REPAIRS

Terence C. Matthews - Horologist

Westminster Chimes

Wall Clocks

Grandfather / Grandmother Clocks

Dial Clocks

Long Case Clocks

Carriage Clocks

Free estimates and house visits

Tel: 01395 273563



17

Find some winter sunshine!

**Comfy casa near the Costa Blanca,
Spain**

Peaceful, two-bedroomed home. Roof
terrace, gorgeous views, communal
pool and tennis. Beaches, cycling, golf,
hiking and more. Suits all ages.

Flights from Exeter & Bristol

Lympstone residents 15% discount

Tel: 07986 607610

www.algorfaholiday.com

DustAway



All Work and no play, we are here to help

Friendly Efficient Cleaning Service

Lympstone Based

Weekly, fortnightly, monthly

One off cleans ie moving house, holiday lets,

End of tenancy cleans, just redecorated or a spring clean

- We also offer an ironing service

All materials supplied. Fully insured

Please call Tracey 07727168817 or Jill 07818484864

www.dustaway-cleaning.co.uk

OFFICE SUPPORT Looking for support with secretarial, administration, marketing, proof reading, print and design purchasing, PR or copy writing?

Phone 01395 275436 or 07587 146223. From £10 per hour.

FRENCH HOLIDAY LET, Vendee: overlooking golf course and only 10 mins drive from superb beach. 3 bedrooms, 2 bathrooms, communal swimming pool and tennis courts. From just £350 per week. Tel 01395 272032 or email:

annahurley1@sky.com

CYGNET COTTAGE - Quiet self-catering cottage just yards from the foreshore. Sleeps 3/4. From £70 per night. Visit www.cygnetcottage.net, or ring Demelza on (01395) 272243.

NEED A HAND AT HOME?

Sarah can help! Home help/cleaning/ironing/shopping/dog walking/light gardening.

07791 944938 Refs available.

DBS checked

SMALL ADS

LYMPSTONE GREETING CARDS AND POSTCARDS

Scenic photographs of your village - from the harbour, boats and washing-lines.....to sunsets and Lymptone Life! Hopefully back soon but meanwhile available from Frances Longhurst 263495

PREGNANT? Experience the magic of birth: release fear and tension, remain conscious, deeply relaxed, in control. Hypnobirthing antenatal classes: for more info phone 01392 412767 or see libbyclaphamhypnotherapy.co.uk

PICTURE FRAMING. For all your framing requirements; also frame restoration & chair caning. Caro Ambridge 01392 877460, Topsham.

DAWN 'TIL DUSK

Creative Gardening service Routine maintenance, Designs & Creates. 0786 6566 883 dawnc@live.co.uk

TUTOR AVAILABLE Local experienced Primary School Teacher available to teach Maths and English. Can also prepare children for SATS, Colyton and 11+ exams. Reasonable rates. For more information call Becky on 07806554106 or email: beckychurch_@hotmail.co.uk

PIANO with a VIEW Lessons for all ages, beginners and improvers, "purely for pleasure" and ABRSM exams to Grade 8. Theory to Grade 5. Tel: Judy Joss (BA Mus, Dip Ed) on 222749

MATHS TUTOR Experienced tutor available to teach primary to GCSE level maths. Reasonable rates Tel: Jane Moffatt on 279952 or **07730877889**

PRISTINE CLEAN - Domestic ironing and cleaning services. Local lady. Call Niki - 01395 740727

FOOT HEALTH PRACTITIONER - Lindsey Waddell MAFHP. Nail Cutting and Treatment of Corns, Callus and Verrucas. Home Visits. 01395 263496

PROPERTY MAINTENANCE - Carpentry, Flooring, Fencing, Gates, Decking, Bathrooms, Kitchens, General Repairs. Free advice & estimates. James Waddell 01395 263496

ACCOMMODATION

WITHALL'S HOUSE BED AND BREAKFAST. A modern and spacious home close to the heart of the village. Ample parking and flexible accommodation. Call Pete and Jan Hardy on 01395 488123 Or visit www.lympstonebedandbreakfast.co.uk

WHATS ON

MAY

- 8 A38's at The Globe
- 9 Exmouth Shanty Men
- 9 Estuary Spring Clean
- 11-22 Will Writing
- 12 PCSO Central Stores
- 13 Folk night
- 17 Nightingale Talk
- 18 AGM Friends of Underhill
- 18 Annual Parish Meeting
- 22 Library
- 24-31 Art Exhibition
- 25 Harry Potter Trail
- 29 Eat the Rich, The Globe
- 31 Players Social Evening

JUNE

- 1 Preschool Prize Draw
- 3 WI
- 5 Go Tell Alice, The Globe
- 7 Open Garden, Sowden Orchard
- 10 Folk night
- 11 Cricket at St Peters
- 12 Ian Boyd, The Globe
- 13 Pre school non stop cycle
- 14 Furry Dance Cream Tea
- 19 Library
- 26 & 28 Open Garden The Lookout
- 26 The Peaceful Hooligans, The Globe

MOBILE LIBRARY

Friday May 22nd., June 19th
Meadow Close: 10.15 to 10.35 am
Car park: 10.45 to 11.45 am



Optima Graphics

Topsham Ltd
silk screen, digital & litho printers

*We provide a high quality, good value
and prompt printing service.*

Silk Screen Vinyl Stickers Estate Agent Boards Printing on: Metal, Acrylic, Plastic, Wood	Large Format Digital Banners Display Panels Window Graphics Pull-up Display Stands Magnetic Vehicle signs	Litho Brochures & Leaflets Stationery Labels & Invitations Pads NCR sets
--	--	---

T: 01392 873822

E: sales@optimagraphics.co.uk W: www.optimagraphics.co.uk
20b High Street, Topsham, Exeter, Devon EX3 0EA