

## PARISH COUNCIL MEETINGS

### Dinan Way extension.



Devon County Council will be undertaking public consultation about the Dinan Way road extension; a scheme which has been in development for many years and which aims to extend Dinan Way from Hulham Road to the A376 with the aim of providing a suitable alternative to the minor residential streets and country lanes currently being used by traffic accessing the principal route in/out of Exmouth.

The County Council does have an approved route for the extension which was agreed many years ago; however, that alignment lies almost directly between the end of the existing Dinan Way to a point on the A376 near to Lympstone and has since raised a number of issues including cost, environmental impact and the encouragement of coalescence of the

Exmouth and Lympstone built up areas. Because of these complications, that approved alignment has sat dormant but we are under increasing pressure to update and define our formal position, particularly for the purpose of the East Devon Local Plan update and greater certainty for landowners currently affected by a large, safeguarded area.

The designs have been reviewed by our engineers in an effort to find options which have a lower cost and a lower impact. To help inform us, we have already commissioned technical studies looking at topography, landscape and other environmental matters; our next step is to engage in public consultation before we decide upon our recommendation to DCC Cabinet prior to submitting a planning application.

### Cont

*Clerk to the Council: A J Le Riche, DMS, 43 Salisbury Road, Exmouth, EX8 1SL, Tel 279665/ 07866 535580  
clerk@lympstone.org*

---

Editor: Chris Carter, Tel 274104. Copy Editor – P Acca, Deputy Editor – Wendy Jupp

Advertising - Liz Griffith: Lympstone web site – [www.lympstone.org](http://www.lympstone.org)

Copy deadline for the next issue – Tuesday 7<sup>th</sup> July, 10am

Copy by e-mail, if possible to [chriscarterathome@hotmail.com](mailto:chriscarterathome@hotmail.com)

The Editor at Hillcrest, Greenhill Ave, Lympstone, EX8 5HW

Distribution by the Telfers, Tel 272275 and others

## Cont

The consultation will focus on seeking views about two proposed route options which both lie on an east-west alignment between Pitt Farm to the north and Summer Lane to the south.

The consultation will commence this week in the following forms:

- A webpage containing information about the route options will go live on Tuesday 2<sup>nd</sup> June. A preview of the webpage material can be found here [https://devoncc.sharepoint.com/sites/PublicDocs/Corporate/\\_layouts/15](https://devoncc.sharepoint.com/sites/PublicDocs/Corporate/_layouts/15)

- The webpage contains a link to an online questionnaire; preview [tp://surveys.devon.gov.uk/s/dinanwayextension/](http://surveys.devon.gov.uk/s/dinanwayextension/)

A DCC exhibition will be held at Brixington Community Church on Friday 12<sup>th</sup> June (2pm to 7pm) and Saturday 13<sup>th</sup> June (10am to 2pm) showing information about the options with DCC staff available to answer questions and guide people through the information. Paper questionnaires will also be available. It is vitally important for Lymptstone residents to find out details of the routes on offer and to really think about how either of these routes will affect Lymptstone and how they might open up areas to unwelcome development.

**The Exe Estuary Trail** continues to cause problems in the Village. The Trail Action Group is keeping up the

pressure on DCC to agree to an off-road route for the section through Lymptstone as well as keeping the on-road section for residents and those who wish to visit the Village. It is thought that the EET has failed to attract the number of commuters that was expected and so an Off-road route is likely to be more attractive to those who want to get to work quickly and easily.

DCC have proposed a number of measures involving laying cobbles across sections of the carriageway to encourage cyclists to use the other sections. Details of these were presented to the Parish Council on 1<sup>st</sup> June 2015 and will be looked at in detail at the next meeting which is on 15<sup>th</sup> June 2015.

The National Trust are proposing to create a Multi user path from between nos 321 and 347 Exeter road, Exmouth to the EET.

The aim of this is to make easy access to the EET for people living in the north of Exmouth. They have submitted a planning application for this to EDDC. The ref is 15/1222/MFUL. Please have a look at this on the EDDC planning search page and consider whether you should object on the grounds that this is premature until an off-road route has been provided through the Village to serve the commuters who will be attracted to this route.



Creating an off-road route is one of the major policies of the Lymestone Neighbourhood Plan and has full community backing and so Judith Carter has been invited to join the Neighbourhood Plan Delivery Group which has the task of taking steps to implement the policies in the Neighbourhood Plan or keep up pressure on others to do so. Judith also wants to meet various cycling groups and commuters who use the route to get their views on the possible options that are available. If you use the EET to commute or would like to but are put off for any reason please contact Judith via the Editor of the Lymestone Herald.

*Clerk to the Council: A J Le Riche,  
DMS, 43 Salisbury Road, Exmouth,  
EX8 1SL, Tel 279665/ 07866 535580  
clerk@lympstone.org*

## NEIGHBOURHOOD PLAN

The Lymestone Neighbourhood Plan was formally 'made' by East Devon County Council in April (This is a Legal term, not ours! which means it has been accepted by East Devon County Council and has to be taken into consideration when making decisions about the Parish). Neighbourhood Planning has three stages



1. Consult and develop the plan
2. Have the plan approved by the authorities and, through a referendum, by the electorate
3. Deliver the community actions contained in the plan

Stages 1 and 2 are now finished and at the Parish Council meeting on 18<sup>th</sup> May the new council voted to establish a team to start stage 3. This new team will comprise Parish Councillors, some members from the working group who oversaw stages 1 & 2 and further volunteers. Everyone is welcome, so please come forward if you would like to be involved in any or all of the projects. Further information on this will be published in next month's Herald, on the Lymestone Village website and on Parish Notice boards

Those who have taken the Plan through the development and referendum will meet in June in order to review the processes followed. We can then document best practices and lessons learned and will be able to pass this knowledge and experience onto other Parishes who are currently drafting their own Plans.

*Linda Lyon*

*(Providing a bypass to Lymestone for the Estuary Trail was incorporated in the Neighbourhood Plan. Ed)*

## THE PARISH CHURCH

### Services

All are welcome to our services.

Sunday 8am-Morning Prayer 10 am-Sung Eucharist

1st Sunday every month is Family Eucharist at 10am

3rd Sunday every month is Morning Praise at 10 am with all age worship.

3rd Sunday Holy Communion at the 8am service.

Every Wednesday 11am Said Eucharist

Once a month on the last Sunday we have an Evensong service at 5pm.

Please come and join in an extra service of worship that complements the morning service.

The Choir welcomes new members. If you are interested please speak to Philip White, our organist (264469) Thank you.

Sunday 7th June. At the Family Communion we will have prayers of thanksgiving for marriage. Couples who have been married in Lympstone during the past 3 years will be invited to join us. Please invite anyone else you know who was married at one of our churches to come along. If you are married you will of course also be included.

**Growing our Church.** This is a course running through June with part two in September at the three churches of the Mission Community.



It is intended to allow everyone in the church to have their say in the way the churches develop and grow. Each church will run the same sessions but at different times to make it possible for as many as can to take part. Holy Trinity times are Mondays from 2.30 to 4pm, Lympstone Tuesdays 7.30 to 9 pm and Littleham Sundays from 5.30 to 7.30pm. See sign-up sheets at back of church. This is not a 'course' in the usual sense so please don't be put off if you don't like courses! It will be a chance for you to have your say and hear what others think about the future of our churches in an informal and friendly atmosphere.

**Bishop's Visit.** It has now been confirmed that Bishop Robert will come and preside at a special Eucharist at Lympstone church on Monday 22nd June at 7.30pm. Part of the purpose will be to commission Revd James Hutchings as the next Rural Dean of Aylesbeare Deanery, but more importantly it provides an opportunity to have the Bishop come to our deanery. We expect details of the service from the Bishop's office shortly, when we can arrange readers, specifically to Lympstone. I hope it will be an opportunity for a mission community celebration with refreshments afterwards; maybe including a glass of wine?

**Church Cleaning** Thank you to all the 'Holy Dusters' who faithfully clean the church week by week,

and also a big thank you to Mary Blair who has coordinated this group over the last few years. We are always pleased to welcome anyone who could give up a little time each week (at a time of your own choosing) to help clean just a small part of the church - if you can do this, please contact the new coordinator, Bobby Brunt.

**Bible Study:** Demelza Henderson is hoping to host a new Bible Study Group, running from 7.30-8.30pm on the first Monday each month (starting on 6th July). Please contact her if you would like to attend (272243), even just on a trial basis.

### **Dates For Your Diary**

12<sup>th</sup> July – Sea Sunday service at Lympstone Harbour – 11.30 am

26<sup>th</sup> July – Barbecue in Candy's Field when we will say goodbye to Katherine Lyddon our Children & family Worker for the last 2 years. More details to follow.

*Brian Mather*

### **FRIENDS OF THE CHURCH LOTTERY**



Whatever the weather, June will be brighter for Mrs Alison Gail – the lucky winner in the May draw of the Friends of the church Lottery.

*Clive Wilson*

### **FROM THE EDITOR**

As you may have seen elsewhere, I have been re-elected as a Parish Councillor and was elected by the other councillors as Chairman last month. I don't expect to give up being editor of the Lympstone Herald just yet but recognise that this new job will be my highest priority for the next year or possibly two.

This month's Herald is tightly packed and we expect July's to be the same plus plans are afoot to have a photo on the cover (paid for by someone else).

*Chris Carter*

### **KEEPING LYMPSTONE BEAUTIFUL**



Yes, summer has arrived and everything is growing in abundance! However, can we still keep an eye out for litter as well as spend a bit of time tidying up our property boundaries and verges? A little weeding and sweeping can make all the difference. Why not help a neighbour too? Although the Best Kept Village Competition is not happening this year, we can still display community pride by continuing to keep our lovely village looking at its best.

*Greg Crum and Sharon Wayland*

## FURRY DANCE CREAM TEAS

Our annual cream tea event will be on Sunday 14th June between 2:30 and 4:30pm in the beautiful setting of the cliff-top garden at Four Winds, Sowden Lane. Relax and enjoy a delicious cream tea.



*Chris Doak*

## FURRY DANCE NEWS

This summer's Furry Dance on the 1st August marks a special anniversary for dance leader Graham Wills. It is 50 years since Graham first led the dance. To celebrate this remarkable achievement the committee and Friends of the Dance are organising a party at the Globe Inn on the 13th July between 1800 and 2100 hrs. We are hoping that many of you will join in the celebration of Graham's 50 years commitment and enthusiasm for this old village tradition. We look forward to seeing you there. Don't forget our next event, cream teas at Four Winds on Sunday 14th June.



*Chris Doak*

## WI

The WI meet on Wednesday, 1st July in the Committee Room, the Village Hall, starting at 2.30 pm when '7 Habits of Highly Healthy People' will be the subject of a talk presented by Rachel Dunn, County Chiropractic, Exeter and North Devon. Visitors welcome.

*Diana Letcher*

## WEDNESDAY LUNCHES



These are nicknamed The Wednesday lunch Club, but it is not a "club" and is open to any Lymptone Resident of pensionable age. They take place at the Methodist Church in Chapel Street and offer a cooked two course lunch for £3 starting at 12.30pm. Please book in two days before by ringing Mrs Diana Winterforde-Young 260307. Why not come with a friend – try us out?

*Mary Blair*

## COFFEE MORNING & BIG BAKE-OFF SALE!

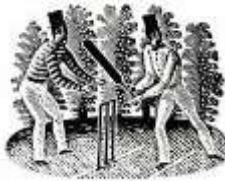


Saturday, 11th July at "Glenhaven" (Next to The Church, Church Road): Official Opening: 10.30 a.m.

Come along to The Lympstone Players' annual fund-raising event to be held in the beautiful garden of "Glenhaven". Sample and take home a wonderful array of delicious home-baked delights produced by some of the best bakers in Lympstone! Cakes, cookies, pastries and bread will be on sale as well as preserves, books, bric-a-brac and games. Bring your family, friends and neighbours and enjoy this popular annual event.  
Entrance Fee£2 (including tea/coffee and home-made biscuit)

*Sharon Wayland,*

## **CRICKET, LOVELY CRICKET!**



The forecast seems good for the most traditional evening in the Lympstone social calendar – the Annual Cricket Match on St Peter's lovely ground. There will be a barbecue, an ice cream stall, a licensed bar, a Brass Band, wonderful views and an entertaining game of Village Cricket, as the Gentlemen of Lympstone pit their skills against the Players of St Peter's, all in aid of the Friends of Lympstone Church. Watch the sun setting over the Haldon Hills as the white-clad run-scorers flicker to and fro. This is one of the most enjoyable ways to spend a sunny summer's evening with your family

and friends – Thursday, 11<sup>th</sup> June from 6pm at St Peter's School. Entrance is free, and parking available.

*Harland Walshaw*

## **DON'T BECOME THE VICTIM OF CRIME**

Since the end of February 2015, there has been a notable rise in burglaries to homes in this area. The burglaries have occurred day or night often when the occupants are at home and the majority have been via insecure doors or windows. Once entry has been gained the offenders have stolen small items such as cash, wallets, phones etc. There are rarely signs of forced entry and some people still may not even know that they have been the victim of a crime.

Police advise that it is important to remember that wherever you live you need to secure doors and windows to remove the possibility of becoming the victim of an opportunist thief. If you see someone acting suspiciously, don't be afraid to ring 999 and tell the Police. Nobody will criticise you if the person or persons you have seen turn out to be genuine, but you won't be thanked by the victim of a crime or by the Police if you haven't bothered to pick up the phone and report it.

*Gerry Moore - Community Safety  
Officer*

**AUDITIONS FOR THE  
LYMPSTONE PLAYERS'  
CHRISTMAS PANTOMIME,  
2015: BEAUTY AND THE BEAST**

Building on the recent success of our Spring Production, "Plaster" and "Separate Tables, Table No. 7", the Lympstone Players will be staging a traditional Christmas pantomime, the classic fairytale, "Beauty and The Beast".

The production dates will be 10th, 11th and 12th December, including a matinee on the Saturday. Rehearsals will be held on a weekly basis (excepting October half term) on Tuesdays and Thursday evenings, starting on 15th September.



We really would like as many folk as possible from the community of Lympstone to be involved either on stage or back stage. So, auditions for this production will be held on Tuesday, 30th June, 2015 at Lympstone Village Hall.

Even if you don't want to act, please come along and join the team, let us know how you would like to be involved. Children: please arrive at 6.00 p.m. prompt;

Adults - please arrive at 7.45 p.m. prompt. All ages and abilities are welcome.

For further information, contact Matt Hood (Director) on 07530 916553 or

Sharon Wayland (Production Secretary) on 01395 274551.

**POLICE**



Between 20<sup>th</sup> May and 22<sup>nd</sup> May a perimeter fence which is a temporary structure on a foot path was criminally damaged. CR/035194/15 refers.

The Gents toilets in Underhill car park have suffered criminal damage to the toilet door. It is believed this occurred between the 10<sup>th</sup> May and the 14<sup>th</sup> May. CR/034370/15 Refers.

Between the 8<sup>th</sup> May and the 9<sup>th</sup> May barbed wire was stolen from a gate in Stone Lane. CR/031827/15 refers.

Over a period of time criminal damage has occurred to a padlock in which superglue has been used. This has happened on three occasions to a gate at the end of Underhill. CR/031827/15 refers.

If you have any information about any of the above crimes, please contact Police quoting the crime number on the details below.

On the 10<sup>th</sup> June I will be outside Londis between 2pm and 2.30pm. This is an opportunity for residents to come along and raise any Policing concerns or issues (as a front line officer sometimes we are called away, should this happen I will reschedule an alternative date - or contact me, details below)



And finally, I have joined the world of social media and I now have a Police twitter account. I will try and tweet about what I get up to whilst on patrol and any interesting policing information. If you would like to follow me on twitter, my handle is @ExmouthPolice

*PCSO Sarah Trayhurn 30110  
Enquiries 101 Emergencies 999  
sarah.trayhurn@devonandcornwall.p  
nn.police.uk*

### **ARE YOU INTERESTED IN TRYING BOWLS OR CROQUET?**

Following the success of the open days at Budleigh Salterton Croquet Club last month, there will be an open evening on Friday, 3<sup>rd</sup> July between 5pm and 8pm. So why not come along and try the games and tour the club and lawns. Members will be on hand to help and explain the games. All equipment will be supplied for you to have a go. The bar will be open and tea and coffee will be available.

Please wear flat soled shoes to protect the lawns. If you want further information, you can contact me on 01395 224759 or the club email: enquiries@budleighcroquet.org. From Exmouth turn left at the traffic light in Budleigh and follow the road round up the hill. The club is just before the top of the hill on the right. The club

address is Westfield Close, Budleigh Salterton, EX9 6ST

*Ian Stratford*

### **FAMILY FUN DAY**

11th July, 10 am - 4 pm, The Strand, Exmouth. Only a few weeks now till our big event of the year and the team are working hard to ensure it is just that - a day filled with fun for all the family including singers, dancers, stalls, fun games, bouncy castle carousel, wildlife, cash prizes and so much more! Every penny that day will go to Exmouth & Lymington Hospiscare meaning that the money will only be spent in EX8 looking after local patients and their families. Please come and support your local Charity and help make the day a success.



*Frances Longhurst*

*(NB Whilst we do not normally carry advertising for events outside Lymington I am assured by Mrs Longhurst that many supporters of this hospice charity come from the generous people of Lymington.)*

## **UK'S LEADING DENTIST CALLS FOR TAX ON SUGARY FOOD AND DRINK**



A tax on sugary food and drink would be an "entirely appropriate" way to improve health and reduce tooth decay among children, according to Mick Armstrong, Chairman of the British Dental Association.

The Knowledge ,EDDC

## **FLOOD RISK WARNING OVER PAVED FRONT GARDENS**

A steady tide of concrete is rolling over Britain's front gardens, with the number being paved more than tripling in 10 years, research has found. Three million more front gardens have been completely paved over since 2005, making 4.5 million in total, according to the Royal Horticultural Society. Concreting or paving increases the risk of flooding.

*East Devon – The Knowledge*

## **COFFEE MORNING**



The local friends' group of Children's Hospice South West are holding a coffee morning in the Methodist Church on Saturday 27th June from 10 til 12. Join us for a drink and a chat, and help raise money for this amazing charity. We will be selling bric a brac, DVDs, books and cakes. Donations welcome.

*Sally Burton*

## **A POLITICAL THANK-YOU**

We would just like to say a big thank you to the Lypmstone Community who voted us onto the District Council at the recent election. We look forward to representing you over the next four years and seek to repay the faith you have placed in us. We will also be attending the Parish council meetings should you wish to see us in person. By e-mail to [rlonghurst@eastdevon.gov.uk](mailto:rlonghurst@eastdevon.gov.uk) or [BIngham@eastdevon.gov.uk](mailto:BIngham@eastdevon.gov.uk)

Rob will also be running his website [www.RobLonghurst.org](http://www.RobLonghurst.org) with up to date news on Planning and other issues of interest.

Thank you all

*Cllr Rob Longhurst & Cllr B Ingham  
East Devon District Council*

## POLICE MESSAGING SYSTEM

Trading Standards have received a number of complaints about unsolicited visits from doorstep traders offering gardening, building and driveway



works. These complaints often mention poor quality work, excessive costs, and even sometimes elderly people being driven to the bank to withdraw cash.

By law, doorstep traders have to give you written information before you agree to a contract - including their name and address, how much the work will cost and how long it will take to complete. They also have to give you a written notice telling you about your right to a 14 day cooling off period. Trading Standards always advise not to enter into contracts with unsolicited visitors to your home. Take your time and always get 3 quotes for any work that you want to be done. Always get a second opinion if you are told by an unsolicited visitor that you need work doing to your home. If you want advice, details of approved traders, or to complain about a doorstep trader, please call Citizens Advice on 03454 040506. If you feel threatened by a doorstep caller, contact the police. That's Citizens Advice on 03454 040506 for any information regarding approved traders. Thank you. This is typical of

the sort of message we are now receiving from the Police Community Messaging System asking for public vigilance.

*Chris Carter, Editor*

## SW COMMS BAND

The band have been fairly quiet in terms of concerts and contests for the last couple of months with only a few engagements at Sandy Park playing at the the Chief's home games. We haven't however been quiet in terms of music, as our neighbours will testify, as we have been practising for our summer performances and a forthcoming concert. We are pleased to be playing at Exmouth Pavilion on Thursday 25th June from 7.30. Music will include classical overtures, marches, music from the stage and screen and virtuoso solo items from guest performers. We would be delighted if you could join us there.

*Jane Sword*

## MOBILE LIBRARY

Friday, June 19th and  
July 17th

Meadow Close: 10.15 to  
10.35 am

Car park: 10.45 to 11.45 am

*D.Letcher*



## LYMPSTONE ENTERTAINMENTS



On Friday 19th June at 7.30pm in Lymptstone Village Hall we are pleased to present THE DEVON YOUTH JAZZ ORCHESTRA And the DYJO Ambassadors They've performed at the House of Commons, the Royal Albert Hall and the Montreux Jazz Festival. Now the young musicians of the award-winning Devon Youth Jazz Orchestra bring their top-class playing to the Village Hall. Also featuring an appearance by the county's very best young soloists, the DYJO Ambassadors. Doors and bar open at 7pm. Tickets £8 for adults, and £4 for under 16s On Sunday 28th June at 7pm in Lymptstone Parish Church THE STARLING OCTET performing Ancienne et Moderne. The Exeter-based mixed a capella group in a soirée of French music spanning the ages, from raunchy sixteenth century madrigals to sacred motets and secular chansons of the Romantic era. Tickets, to include a glass of wine or a soft drink, £8 for adults and £1 for under 16s. Finally on Saturday 11th July in the grounds of Ellenthorpe, Lymptstone by kind permission of Judith and Robin Telfer – bring your own chairs! The Cygnet Training Theatre's production of THE TRIUMPH OF LOVE by Pierre de Marivaux We're delighted to be welcoming back this young Exeter

company in a new translation of a witty and seductive comedy by one of the most important French playwrights of the eighteenth century – 'a delicious soufflé' said one critic. Full details will follow in our June issue. If fine the performance will begin at 6pm, but why not come at 5pm and bring a picnic? In the Village Hall at 7pm if the weather is unkind to us. Tickets for all events are, or will in due time be, available from the Lymptstone Entertainments booking office at 2 Brookfield Cottages, the Strand, or telephone 07516 322853, or 01395 272243.

*Brian Mather*

## EXMOUTH LEISURE CENTRE NEW GYM OPENING

LED opened the doors to its simply spectacular new gym at Exmouth



Leisure Centre on Monday 18 May 2015. Perfectly timed to help you feel great this summer!

In addition, two of the five fabulous new studios were also unveiled – with stunning estuary views and a state of the art air conditioning system. The gym has more than doubled from its original size and has relocated to the ground floor with a new range of

equipment. It forms one of the key features of the £2 million redevelopment programme the centre is currently undergoing, in partnership with East Devon District Council.

Interactive treadmills and bikes provide Freeview TV channels and give access to social media and web browsing and can link to outside exercise activities. Whilst there is an abundance of new equipment, it is all exceptionally user-friendly. The revolutionary toning suite is intended for people of all ages, abilities and mobility and enables exercise in a comfortable environment – especially great if you don't want to attend the gym or a high energy class. The remaining studios are also ready for the Mind & Body and Studio Cycling classes.

The culmination of the work will also see the opening of Exmouth's long awaited climbing wall. With 11 different walls, climbers of all ages and abilities will be able to have fun and test their nerve with this fabulous addition to the community. A shortlist of entries for the design of one of the walls is being finalised. Anyone who takes out an unlimited membership in May or June will be given a month FREE – let's all feel great this summer!

For further details contact:

Kate Williams, Marketing, LED Leisure Management Ltd, 01395 562502 [kwilliams@ledleisure.co.uk](mailto:kwilliams@ledleisure.co.uk)

## **DITCH THE JUNK MAIL**

Don't let Devon go to waste is encouraging people to sign up to the Mailing Preference Service (MPS) to reduce junk mail.

Nearly 50,000 tonnes of junk mail is created in Devon every year which is a waste of natural resources and unless it's recycled could end up in landfill. If this years target is reached that would be a saving of 440 tonnes alone.

The MPS is a free service, funded by the direct mail industry to enable consumers to have their names and home addresses in the UK removed from lists used by the industry. It is actively supported by the Royal Mail and all directly involved trade associations and fully supported by The Information Commissioners Office.

People can register by visiting [www.recycledevon.org/junk](http://www.recycledevon.org/junk).

*InTouch DCC*

## **DIGGING FOR OXFAM**

I dig / do simple garden jobs, you pay £10 an hour and it all goes directly to Oxfam 276569.

*Jenny Moon*

## LYMPSTONE GARDEN CLUB – SUMMER VISIT

On Tuesday 23 June, there'll be a Garden Club coach trip to Lanhydrock in Cornwall, with its extensive gardens and a beautifully kept Victorian house to explore.

The coach will leave from the Saddlers Arms at 9.00am on the day.

The cost is £12 for travel, plus entry to the National Trust property – free to NT members and £8.00, a special reduced group rate, for non NT members.

This visit is open to all village residents and their friends and family. Please contact Pat Boaden 01395 272067 or patb@millcombe.com to book your place. Hope you can join us.

*Gail McKenzie*

## ART EXHIBITION

The Lympstone Art Group Exhibition which finished on 31st May continues to move from strength to strength. The judge, Phil Creek commented on the high standard, the range of Art work and the quality of presentation. He said that it was the best local exhibition and that the 3D exhibits added an additional dimension lacking in some other exhibitions. Comments made in the visitor book: " I think this is the finest art display by the Lympstone



Group to date", " Amazing paintings and sculptures - so much artistic skill and talent". This year we ran some demonstrations during the week on creating art on an ipad which were run by Ian Goult. These were rated excellent and were enjoyed by both young and old.

The Alison Leadley-Brown Trophy, for the best exhibit overall went to Louise Banks for her painting, "Sleeping Woman" and Highly Commended Awards went to John Cowlshaw for his painting of Lympstone and Mariangela Williams for her painting, "From Otter Head".

The Pat Ferguson Award for best Abstract went to Jenny de la Haye for her Painting "Hope".


The winner of the Norman de La Rue Trophy was Sheila Stone for her etching, "Untitled" with Highly Commended Awards going to Louise Goult for her Painting "The Garden" and to Mai Targett for her wire sculpture, "Long Tailed Tit". The Award for the best 3D Exhibit went to Angie Wilkinson for her bronze sculptures.

Thank you to everyone who contributed to the Exhibition, all our helpers and also the buyers as the contribution of all made it a very successful and enjoyable exhibition.

*Judith Carter*

*Lympstone Art Group*

## VILLAGE WEBSITE

Any updated information  
please contact   
Update@lympstone.org or call  
01395489506.

*Mark Reynolds*

## LYMPSTONE WI

The Committee Room at the Village Hall was full to bursting for our 3<sup>rd</sup> of June meeting, when the actor and musician, John Telfer, who plays the part of Alan Franks, the vicar in the Radio 4 series, *The Archers*, told us about his “Life in Ambridge”. John, who combines teaching at the Bristol Old Vic Theatre School with composing music for a variety of productions, is also the voice behind a host of audio books, and has appeared in many radio and TV dramas, such as *Bergerac*. He kept us all thoroughly entertained with his anecdotes about life behind the scenes in *The Archers* and his descriptions of the processes involved in recording the series.

After a lively Q&A session, which carried on well into the tea break, our secretary, Bobbie Brunt, chaired the meeting in place of our president, Diana de la Rue, who had to leave immediately after the talk to catch a train up to London, where she will be the Link Delegate for the Woodbury

and Lymptone WIs at the WI Centenary celebration at the Royal Albert Hall the next day, in the presence of the Queen, Princess Anne, and Sophie Countess of Wessex. We heard about the enjoyable trip made by some of our members to Torre Abbey on Saturday the 16<sup>th</sup> May along with members from the Lymptone History Society. We were also reminded that, there having been no litter pick during May, the next litter pick will be at 11 am on Friday the 26<sup>th</sup> June.

Our next meeting will be held on Wednesday the 1<sup>st</sup> July at 2.30 pm in the Committee Room of the Village Hall, when the chiropractor, Steve Drake, will help us prepare for the summer with tips on “Seven Habits of Highly Healthy People”.

We are very pleased to welcome anyone who thinks she might be interested in finding out about the Lymptone WI. For more information please phone Diana de la Rue on 01395 274099 or find us on the village website.

*Lindy Newton*

**DISCLAIMER** This news letter is compiled from emails sent to the editor by numerous people and very little of the information is checked before publishing which is done in good faith.

*Chris Carter, Editor*



## **People of Lympstone... are you thinking of selling your home?**

As a resident of Lympstone and a local estate agent, I am well aware of the very many benefits of living in this much sought-after, lovely village and I believe the in-depth local knowledge this affords, gives me a huge advantage when trying to sell your home and get the best price.

At Wilkinson Grant & Co, this local knowledge is supported by an award-winning professional team including in-house surveyors, financial and legal experts with a track record of achievement dating back over 20 years, which combine to ensure that your property move is handled with complete professionalism from start to finish.

**For free, confidential advice please contact  
Joel Moore in the Topsham office**

**Telephone 01392 875000**  
[j.moore@wilkinsongrant.co.uk](mailto:j.moore@wilkinsongrant.co.uk)





**THE GLOBE INN**



**The Strand Lympstone**  
**Telephone 01395 263166**

**OPEN DAILY from 12 'til late**

**LIVE MUSIC**

**JUNE:**

Fri 5<sup>th</sup> – Go Tell Alice

Wed 10<sup>th</sup> – Lympstone Folk Night

Fri 12<sup>th</sup> – Ian Boyd

Fri 19<sup>th</sup> – The King of Pop Michael Jackson dance tribute

Fri 26<sup>th</sup> – The Peaceful Hooligan

**JULY**

Fri 3<sup>rd</sup> – The A38's

**FOOD SERVED**

Monday to Friday 12 till 2 & 6 till 9

Sat All day 12 till 9, Sun All day 12 till 8

Menu of the Day available Monday to Friday to 2pm

1 Course only £4.95; 2 Courses for £6.95; 3 Courses £7.95

Collect your loyalty stamps & receive your 7<sup>th</sup> meal free!

**Wednesday Nights**, 2 dine from our grill with a complimentary bottle of house wine for only £25!

**Thursday** is Fish Supper Night

Eat in or Takeaway for £7.95 from our specially selected menu.

**Sunday Lunch**

Served 12 lunch until 8pm

Choice of 2 local meats and vegetarian options

1 course £7.95, 2 Courses £9.95, 3 Courses £11.95

Specials Board also available


Every **Tuesday** is Quiz Night from 9pm

**OUR NEW SPRING/SUMMER MENU IS OUT NOW!**

Why not follow us to keep up to date with our events and special offers

 The Globe Inn  @GlobeinnLymp








**East of Exe**

Exceptional Estate Agents

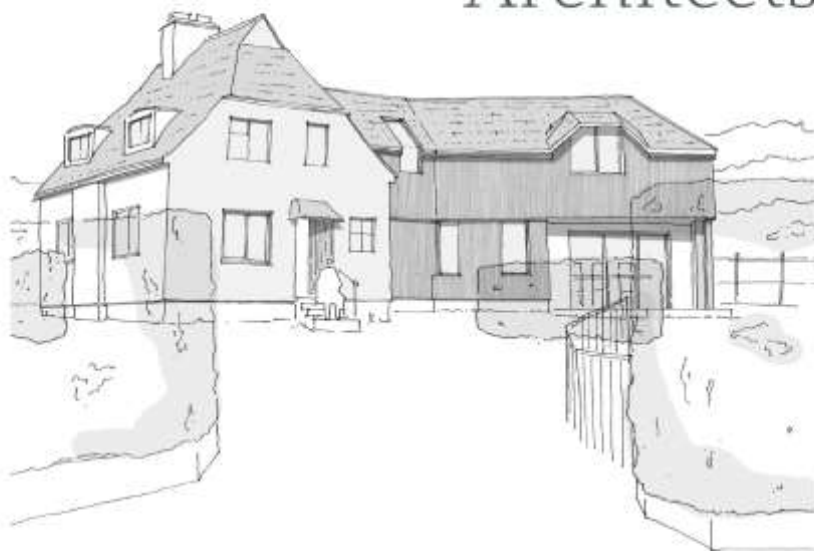
for East Devon,  
Topsham and Exeter



[www.eastofexe.co.uk](http://www.eastofexe.co.uk) 01392 877240

**French and Italian tuition** available with qualified and experienced teacher.  
Can teach all levels up to 'A' level. Please email  
[clairearrowsmith@hotmail.com](mailto:clairearrowsmith@hotmail.com) for more info

# Hilton Barnfield Architects



**We offer a personal, creative and professional design service for your project.**

- Design expertise
- Planning applications
- Building Regulations documentation
- Detailed drawings
- Construction co-ordination

Call for a **free initial consultation:**

**01395 224 829**

**[www.hiltonbarnfield.co.uk](http://www.hiltonbarnfield.co.uk)**



<p><b>COMPUTER REPAIRS</b></p> <p><b>ELECTRO COMPUTERS</b></p> <p><b>NO FIX - NO FEE</b></p> <p><b>01395 548151 / 07944 051987</b></p> 	 <p><b>PETER J ACCA</b> Property Maintenance <b>PVCU WINDOW REPAIR SPECIALIST</b> Replacement Double Glazed Units</p> <p>thesccas@yahoo.co.uk 07801365097 01395489791 53 Evergreen Close Exmouth EX8 4RR</p>
--	---

**COUNSELLING THERAPY** Jenni Gates MA, Adv Dip Couns, MBACP. 07565 288004 Email jennigatestherapy@gmail.com. www.jennigatestherapy.co.uk

**ROOFER.** Specialist in roof tiles and slates, fascias and guttering, repairs and replacement, general maintenance. Call Liam on 01395 277236 or 07528 970 950 email: liam@liamandemma.com.

**ANDY WESTERN - GARDENER** established in Exmouth since 1992. I live in Lymptstone and provide regular grass cutting services and hedge trimming. Tel 01395 741656.

## **FRENCH AND ITALIAN TUITION**

available with qualified and experienced teacher. Can teach all levels up to Alevel. Please email clairearrowsmith@hotmail.com for more info.

## **SIMON QUICK THE LOG MAN**

For all your log, coal, kindling & gas supplies Tel 01395 267490

**ELECTRICIAN** Specialising in domestic work; Happy to do small jobs. Call Simon on: 07985 963075

*Adverts cost 60p a line or £12 to £15 a box or £90 a page (with reductions on runs).*

## JEFF CROMPTON

Greenways, Courtlands Lane,  
Lymestone

For Superior Quality Home  
Improvements and All Types of  
Building Work including Kitchens &  
Bathrooms

Tel: 01395 272815

Mobile: 07768 282 129



## LYMPSTONE HAIR & BEAUTY STUDIO

**WALK IN's AND EVERYBODY  
WELCOME!**

Perms, Barbering, Shampoo and Sets,  
Colouring, Highlights, Foils,  
Massages, Waxing, Gelation Nails,  
Facials, Makeovers, Tanning and more  
**.For an appointment call us on 01395  
274089 Or text only on 07552313653**

## DOG GROOMING



Kind & Qualified Groomer.  
Commissions for PET PORTRAITS  
in pastel also undertaken.  
Make Superb Presents.  
(Examples of work can be viewed).  
Tracey Crompton, Greenways,  
Courtlands Lane, Lymestone.  
Tel: 01395 272815 /07973 986 268.

## FOOD WITH FLAIR CATERING

Small and Large Events -  
Menus to Suit your Budget  
Telephone Shirley or Michael  
on 265147 or see our Website  
[www.foodwithflair.co.uk](http://www.foodwithflair.co.uk)

## CLOCK REPAIRS

Terence C. Matthews - Horologist  
Westminster Chimes  
Wall Clocks  
Grandfather / Grandmother Clocks  
Dial Clocks



Long Case Clocks  
Carriage Clocks  
Free estimates and house visits  
Tel: 01395 273563

Find some winter sunshine!  
**Comfy casa near the Costa Blanca,  
Spain**

Peaceful, two-bedroomed home. Roof  
terrace, gorgeous views, communal  
pool and tennis. Beaches, cycling, golf,  
hiking and more. Suits all ages.  
Flights from Exeter & Bristol

Lymestone residents 15% discount  
Tel: 07986 607610  
[www.algorfaholiday.com](http://www.algorfaholiday.com)



## DustAway

All Work and no play, we are here to help

Friendly Efficient Cleaning Service

Lympstone Based

Weekly, fortnightly, monthly

One off cleans ie moving house, holiday lets,

End of tenancy cleans, just redecorated or a spring clean

- We also offer an ironing service

All materials supplied. Fully insured

**Please call Tracey 07727168817 or Jill 07818484864**

**[www.dustaway-cleaning.co.uk](http://www.dustaway-cleaning.co.uk)**

---

**OFFICE SUPPORT** Looking for support with secretarial, administration, marketing, proof reading, print and design purchasing, PR or copy writing?

Phone 01395 275436 or 07587 146223. From £10 per hour.

**FRENCH HOLIDAY LET**, Vendee: overlooking golf course and only 10 mins drive from superb beach. 3 bedrooms, 2 bathrooms, communal swimming pool and tennis courts. From just £350 per week. Tel 01395 272032 or email:

[annhurley1@sky.com](mailto:annhurley1@sky.com)

**CYGNET COTTAGE** - Quiet self-catering cottage just yards from the foreshore. Sleeps 3/4. From £70 per night. Visit [www.cygnetcottage.net](http://www.cygnetcottage.net), or ring Demelza on (01395) 272243.

### **NEED A HAND AT HOME?**

Sarah can help! Home help/cleaning/ironing/shopping/dog walking/light gardening.

07791 944938 Refs available.

DBS checked

## SMALL ADS

---

### **LYMPSTONE POSTCARDS**

**BACK!** The Lympstone postcards are once again on sale in the Ice Cream parlour. Village photograph greeting cards still available on request to Frances Longhurst - 263495

**PREGNANT?** Experience the magic of birth: release fear and tension, remain conscious, deeply relaxed, in control. Hypnobirthing antenatal classes: for more info phone 01392 412767 or see libbyclaphamhypnotherapy.co.uk

**PICTURE FRAMING.** For all your framing requirements; also frame restoration & chair caning. Caro Ambridge 01392 877460, Topsham.

### **DAWN 'TIL DUSK**

Creative Gardening service Routine maintenance, Designs & Creates. 0786 6566 883 dawnc@live.co.uk

### **TUTOR AVAILABLE**

Local experienced Primary School Teacher available to teach Maths and English. Can also prepare children for SATS, Colyton and 11+ exams. Reasonable rates. For more information call Becky on 07806554106 or email: beckychurch\_@hotmail.co.uk

**PIANO with a VIEW** Lessons for all ages, beginners and improvers, "purely

for pleasure" and ABRSM exams to Grade 8. Theory to Grade 5. Tel: Judy Joss (BA Mus, Dip Ed) on 222749

**MATHS TUITION** Experienced tutor available to teach primary to GCSE level maths. Reasonable rates Tel: Jane Moffatt on 279952 or **07730877889**

**PRISTINE CLEAN** - Domestic ironing and cleaning services. Local lady. Call Niki - 01395 740727

### **FOOT HEALTH PRACTITIONER -**

Lindsey Waddell MAFHP. Nail Cutting and Treatment of Corns, Callus and Verrucas. Home Visits. 01395 263496

### **PROPERTY MAINTENANCE -**

Carpentry, Flooring, Fencing, Gates, Decking, Bathrooms, Kitchens, General Repairs. Free advice & estimates. James Waddell 01395 263496

### **ACCOMMODATION**

#### **WITHALL'S HOUSE BED AND**

**BREAKFAST.** A modern and spacious home close to the heart of the village. Ample parking and flexible accommodation. Call Pete and Jan Hardy on 01395 488123 Or visit [www.lympstonebedandbreakfast.co.uk](http://www.lympstonebedandbreakfast.co.uk)

## WHATS ON

### JUNE

- 5** Go Tell Alice, The Globe
- 7** Open Garden, Sowden Orchard
- 10** Folk night
- 11** Cricket at St Peters
- 12** Ian Boyd, The Globe
- 13** Pre school non stop cycle
- 14** Furry Dance Cream Tea
- 19** DYJO Concert Village Hall
- 19** The King of Pop
- 22** Visit from Bishop Robert
- 23** Garden Club coach trip
- 26 & 28** Open Garden The Lookout
- 26** The Peaceful Hooligans, The Globe
- 27** SW Childrens Hospice Coffee Morn.
- 30** Christmas Panto Auditions

### JULY

- 1** WI
- 3** Croquet Club open eve.
- 3** The A38's, The Globe
- 6** Bible Study Group
- 11** Family Fun Day, Exmouth
- 11** Lymptone Players Coffee Morn
- 11** Cygnet Theatre Open Air production
- 12** Sea Sunday Service
- 13** Furry Dance Party. The Globe
- 26** Barbecue Candy's Field



## Optima Graphics

Topsham Ltd  
silk screen, digital & litho printers

*We provide a high quality, good value  
and prompt printing service.*

<p><b>Silk Screen</b> Vinyl Stickers Estate Agent Boards Printing on: Metal, Acrylic, Plastic, Wood</p>	<p><b>Large Format Digital</b> Banners Display Panels Window Graphics Pull-up Display Stands Magnetic Vehicle signs</p>	<p><b>Litho</b> Brochures &amp; Leaflets Stationery Labels &amp; Invitations Pads NCR sets</p>
---	---	--

**T: 01392 873822**

**E: [sales@optimagraphics.co.uk](mailto:sales@optimagraphics.co.uk) W: [www.optimagraphics.co.uk](http://www.optimagraphics.co.uk)**

20b High Street, Topsham, Exeter, Devon EX3 0EA