

THE LYMPSTONE HERALD

November 2016

Volume 40, No 3

50p
where
sold



PARISH COUNCIL

Dinan Way Extension - The planning application for this has now been submitted. Details are at <https://planning.devon.gov.uk/PlanDispx.aspx?AppNo=DCC/3909/2016>

Parish Councillors have met Officers of DCC several times to discuss the implications of this road on the Parish. The main concern is the increased risk of surface water run-off which will add to the already poor and overloaded drainage system including the Wotton Brook.

The Parish Council will hold a public open meeting at 7.00pm on Thursday 24th November 2016 in the Village Hall to hear views from the public and formulate a response to the application. Please come along and hear the various comments about how this road might affect your house.

Sewage – Di Beatty reported that there had been more occasions when raw sewage had been discharged into the River Exe recently even though there had been no rain for a long time. Cllr Rob Longhurst reported a similar situation last month and has asked for details of this and how the number of discharges is monitored. To date no information has been forthcoming. The Council also received the Exe Estuary Management Plan which had as one of its objectives to press SWW to reduce these discharges. The Parish Council will be lobbying SWW to improve this situation and will lobby the Exe Estuary Management Partnership to increase its pressure on SWW to do better.

Cont

*Clerk to the Council: A J Le Riche, DMS,
8 Drakes Gardens, Drakes Avenue,
Exmouth, EX8 4AD Tel 279665/07866
535580 clerk@lympstone.org*

Editor: Chris Carter, Tel 274104. Copy Editor – P Acca, Deputy Editors – Terri Scott
Advertising - Liz Griffith: web site – www.lympstone.org

Copy deadline for the next issue – **Tuesday 3rd Dec, 10am**

Copy by e-mail, if possible, to chriscarterathome@hotmail.com

The Editor at Hillcrest, Greenhill Ave, Lymington, EX8 5HW

Distribution by the Telfers, Tel 272275 and others

Exe Estuary Trail – In December 2015 the Trail Action Group wrote to Devon County Council with a request for an update on our request for support for an off-road route for the Exe Exeter Trail through Lypstone (as identified in our Neighbourhood Plan). David Whitton, DCC Head of Highways, replied and placed responsibility for any progress on Lypstone Parish Council. He proposed that Lypstone Parish Council should develop the route into a viable proposition, consider how it could be funded, and get permission from Network Rail. Judith Carter and the Trail Action Group are keeping up their hard work on the project to have an off-road route through the Village. They have secured the services of Engineering Consultancy, Sands Consultants of Exeter. Sands will be liaising with DCC and Network Rail Engineers to draw up plans for the feasibility of an off-road route. They have already visited the area to gain an impression of what might be possible. The next stage will be for Sands with an Engineer and a Network Rail Engineer to walk a potential route. No costs have been charged so far but this next phase will cost in the region of £2,000. Sands are at pains to point out that they will only recommend proceeding beyond initial investigations if

discussions with Network Rail are positive, construction costs appear reasonable, the route appears broadly acceptable, and DCC are supportive.

Cllrs Jenny Clark and others reminded the Council that this was the most popular of all the community actions from the Neighbourhood Plan and that the Council had been setting aside funds for Neighbourhood Plan Projects. The Parish Council wholeheartedly supported the Trail Action Group on the progress that they have made and agreed to fund the first phase of time at a cost of approximately £2,000.

Lypstone Youth Club and Lypstone Pre-school – The project to replace Lypstone Youth Club building is moving on. The idea is to demolish the building, build a new Pre-school building on the site of the Youth Club so that it has easy access to the excellent outdoor play facilities at the Village Hall and then build a new Youth Club building next to the Pre-school building. The Youth Shelter will be removed and the Basket swing, a very popular piece of equipment, will be moved to the other side of the Multi User Games Area. DCC have submitted a bid for Government funding for a ‘turn-key building for the Pre-school. A decision on that will be known in December. If this is successful it will release some Parish Council funds for a new Youth Club building. The

Parish Council has authorised a lottery bid for £100,000 towards the cost of a new Youth Club and will apply for other sources of funding to meet the balance. If these are not forthcoming, then the Council will take out a loan to cover the balance. With low interest rates, some councillors considered this to be a good opportunity to create a new public building for the Parish.

We need a new Parish Councillor.

There is a vacancy for a Parish Councillor on Lymptstone Parish Council caused by the resignation of Sandra Everett. Parish Council Chairman thanked Sandra for her time as a Parish Councillor and now the hunt is on to find a successor. The vacancy has been formally advertised and no request for an election has been received so it is now up to the Parish Council to co-opt a new Councillor. Anyone interested in filling this vacancy should write to or email the Clerk or contact a Parish Councillor saying why they would like to become a Councillor and the skills and experience they could offer. Applications will be considered at the meeting of the Parish Council on Monday 5th December 2016.

NHS BEDS

Northern, Eastern and Western Devon Clinical Commissioning Group (NEW Devon CCG) are consulting on proposals to improve your future care in the area by providing more care in people's homes and avoiding hospital

admissions where possible. They are doing this by reducing the number of beds in local hospitals including Exmouth to fund the cost of the different service. Saying "In addition to the consistent and enhanced provision of community health and social care delivered in people's homes, the services will be supported by consolidating community inpatient beds in the following possible configurations, subject to consultation:

Option A, Beds at: Tiverton 32, Seaton 24, Exmouth 16

Option B, Beds at: Tiverton 32, Sidmouth 24, Exmouth 16

Option C, Beds at: Tiverton 32, Seaton 24, Exeter 16

Option D, Beds at: Tiverton 32, Sidmouth 24, Exeter 16

It is worth noting that Options C & D will see the closure of all beds at Exmouth."

There is concern that this and the closure of other homes in the area will reduce the number of convalescent beds for those who need them and do not have family living nearby to help people recover from time in hospital. The area generally has an ageing population and so it takes longer for them to recover from treatment.

There is also concern that, at the moment, hospitals are not discharging patients because there is a lack of services to support them when they get home. You need to have your say on the shape of health services at this

local level. Details are on the New Devon website (www.newdevonccg.nhs.uk/about-us/yourfuture-care/102019.) You can also respond in writing addressed to Freepost YOUR FUTURE CARE. (Use the capitals as shown and there is no postage to pay).

Clerk to the Council: A J Le Riche, DMS, 8 Drakes Gardens, Drakes Avenue, Exmouth, EX8 4AD Tel 279665/ 07866 535580 clerk@lympstone.org

THE PARISH CHURCH



- Where all are welcome.

Choir – Our small choir provides a vital lead to the music in our worship – if you love singing and would like to join our choir, Philip White, our organist, will be pleased to discuss your involvement over a cup of coffee after any service or Tel: 264469.

The Eucharist (or Holy Communion) Jesus celebrated a Last Supper with his disciples on the night before he died. He broke bread with them, and shared a cup of wine. Ever since then Christians have repeated his actions in the Eucharist service..

Children are always very welcome to join in all our 10am services at Lympstone. We especially look forward to welcoming them with their parents at the Eucharist. The first and third Sundays are family services with

Eucharist on the first Sunday and Morning Praise on the third.

Sunday School / Sunday Club:

There is no Sunday School at the moment, however if a few children are present week by week on the 2nd, 4th and 5th Sundays, we can re-start a Sunday Club for children in the vestry during the service.

Communion Boxes containing material to help children follow and understand the Eucharist are available at the back of the church. If you wish to share the worship with your child please ask a sidesperson for a box.

The Family Corner is available near the entrance to the church where there are activity bags for small children.

Christmas dates. As we approach the festive season we look forward to the celebration of the birth of Jesus in the singing of carols, celebrations, giving and receiving gifts. The main Christmas services will be listed in the December Herald but the earlier ones need to be given this month to make sure you know in good time.

Christmas Shoebox Appeal: Once again, Lympstone Primary school is hoping to fill shoeboxes with presents for under-privileged children who won't otherwise receive anything this Christmas. If you would also like to contribute, filled shoeboxes can be brought to church no later than Sunday 13th November (and will then be passed on to the school); leaflets about what can and cannot be packed are available at the back of the

church. If you cannot put a full shoebox together, please add something to the box at the back of church by this date, and the School Council will assemble shoeboxes from these donations. Thank you for your support. Demelza.

Carol Singing around the village is early because we wanted to include the Royal Marines



who are coming to help with a number of bandmen to play for the carolers. We will meet at the Parish Church at 6pm on Monday 12th December and finish up at the Methodist Church for refreshments and maybe a mince pie at the end of our journey. All are welcome and it is a very special experience to carol in the dark with torches and lanterns to bring the good news and cheer to the village on a winter's evening. Do come along.

Christingle Eastern European Churches gave us the Christingle service where the world is represented by an orange with a red band symbolising the blood of Christ. Purses of money are donated to the Childrens' Society. After all the oranges are distributed the candles are lit to shed Christ's light on the world. The electric lights are put out and, in



the darkness, the candles light up the whole church with their gentle glow. A memorable and moving experience. Everyone is welcome to come and join in the carol singing and enjoy the candlelight and the message of the Christ child.

Carol Service

The ever popular Carol service in the church will



be on Monday 19th December at 7pm but come early for a seat!

Finally for the month the '**Scratch Nativity**' starts from the Nursery at 6pm on Wednesday 21st December. All ages are welcome and shepherds, angels, kings, Josephs and Marys are wanted to act out their various parts. You may wish to come as a donkey or a sheep or bring one along! We progress, retelling the story of the first Christmas, towards the church and later arriving at the altar, the angels announce the news to the shepherds and all progress to the stable to see the newborn baby. Carols are sung and with some refreshment the Nativity is complete. Young children and some older ones enjoy the playing of the participants of the story and many adults love to act it out too. All are welcome. We would like to have more than 100 this year. Some costumes are available in church from 5.30 or bring your own.

Brian Mather

LOCAL BAND PLAYING FOR LOCAL CHARITY



Exmouth & Lympstone Hospiscare are delighted that the Lympstone Training Band have agreed to put on a Christmas Concert for the Charity. As many of you will know the Band have entertained at several village events during 2016, and their ever growing popularity and skill continues to bring smiles to every audience! The Concert is on Monday, 5th December, at Holy Trinity Church, Exmouth from 7.30pm - 9.00pm.

Mulled wine and mince pies are included in the ticket - £5 each - which will be available in Central Stores. A wonderful way to start celebrating Christmas, we hope many of you will support Roger Riggs and his Band as they support our local Charity.

Exmouth & Lympstone Hospiscare Christmas Cards will also be available soon, one featuring a photograph of Lympstone covered in snow.

Frances Longhurst 263495

LYMPSTONE HISTORY SOCIETY TALK

Breton Craftsmen in Late Medieval Devonshire with John Allan
Wednesday 23rd November 2016,
7.30pm at the Methodist Hall, Chapel

Road. Entry is £3.50 for LHS members, or £5 non-members, and includes tea/coffee and a biscuit. Everyone welcome

Mary Turner

RYA SHOREBASED DAY OR COASTAL SKIPPER COURSES RUN OVER WEEKENDS



Lympstone Sailing Club is running the above courses during January and March 2017 at the club. Both courses involve 40 hours tuition (the course content is on the RYA website). There is also about 20 hours' homework to do over the period of the course. The courses will run 9.30 to 5pm over 5 weekends. Day Skipper Course days start Saturday 7th and Sunday 8th January, Saturdays 14th, 21st and 28th Jan and 4th Feb for the exam. The Coastal Skipper Course will be over 5 weekend days starting Saturday 4th and Sunday 5th March, then Saturdays 11th, 18th and 25th with the exam on 1st April. The cost for each course is £250 per person + the cost of the RYA materials which are £35.

Please contact judith_carter@hotmail.com by 30th November if you wish to book a place. Open to all

Judith Carter

POLICE CRIME FIGURES

September – 13 Logs called into the police but no crimes generated.



October – 12 Logs called into police but no crimes generated, there was an incident of suspicious door to door selling but the people involved were stopped in Exeter and checked, they turned out to be canvassing for a company in Exmouth.

PCSO 30734 Justin Willis

*Contact Devon & Cornwall Police on
101@devonandcornwall.pnn.police.uk
Textphone 18001 101 for the deaf,
hard of hearing or speech impaired
Always call 999 in an emergency*

FROM THE EDITOR

Don't be shy. We need two volunteers.

The first, with great ideas and the ability to 'sell' them to a group of people with altruistic views who also sit on the Parish Council. The second with the ability to read what others have written and to apply a bit of common sense and almost intuitive feeling for what the writer meant as they edit the Herald.

If you feel that you would like to try either of these activities then please contact either me or Tony, our Parish Clerk. The contact details for both are



on the front page of this Herald or just ring 274104 right now – No WAITING!.

Chris Carter

FRIENDS OF THE CHURCH LOTTERY



Many thanks to all who supported our recent Curry Lunch in the Hall - a 'sell out' yet again!

Our winner of the £25 Lottery prize for October is Martin Richardson.

Clive Wilson

LYMPSTONE FILM SOCIETY FILMS BEFORE CHRISTMAS



On Sunday afternoon November 20th, Marlon Brando in the famous 1954 film *On the Waterfront*. At the Village Hall 2pm for 2.30pm start.

On Friday evening December 9th - *Hail, Caesar*. The Cohen Brothers' celebration of Hollywood – "affectionately funny". At the Village Hall; 7 for 7.30pm start.

Both films free to members; small charge for others at the door – see posters.

Don Mildenhall

CHURCH CHRISTMAS CARDS

Last year's sale of Christmas Cards showing Lymstone Church stained glass windows was a great success.

This year we are again selling 5 photographic cards of windows in the church. There will be packs of five cards all the same and mixed packs of the five designs

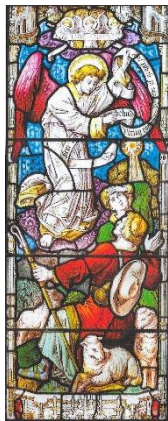
Cards will be on sale in the village at Central Stores, 'Oh Sew Devon' and at Parish Church and Methodist Church services.

John Lupton

LETTER FROM CENTRAL

I would like to express my thanks to all who attended our recent Open Evening. My senior management and I are currently working our way through the excellent suggestions and comments received and we should start to see some new products and initiatives making an appearance soon.

I would also like to thank all of our customers and my store team for the warm welcome extended to me since my arrival. I will continue to make



myself available should anybody have any additional ideas on how we can improve our store.

Kind Regards, Ray Buckley

FROM THE KNOWLEDGE



Repair your own holes in the road Devon County Council wants to create an army of volunteers to fill in potholes. Residents are to be given two days of training and supplied with equipment and materials as part of the 'Dig-It-Yourself' scheme supported by the Government. A pilot scheme across five parishes proved such a success they now plan to roll it out across the whole of Devon. The LGA said a number of other local highway authorities are now considering rolling out similar schemes of their own.

EDDC



COFFEE MORNING

The friends of Children's Hospice South West are holding a coffee morning in the Methodist Church on 26th November from 10 until 12. Do come along for a drink with your friends. We hope to have some cakes to sell (donations gratefully received!) and there will be books and bric a brac to browse.



Sally Burton

ST. PETER'S PREP SCHOOL CHRISTMAS FAIR 1PM - 4PM ON 26 NOVEMBER

St. Peter's Prep School is hosting its Annual Christmas Fair at Harefield, Lymptone from 1pm to 4pm on Saturday 26 November 2016. Entry and parking are free and all are welcome.

Stalls can be purchased for £15 and there are a handful remaining. Please email



fosp@stpetersprepschool.co.uk for further details. There will be everything on sale from toys, cakes and confectionery to Christmas decorations and luxury handmade gifts.

The Lymptone Training Band will be opening the Fair at 1pm and there will

also be Christmas carols, with the raffle being drawn at 3:30pm. Children can visit Santa's Grotto, take part in activities and have their faces painted. Burgers, mulled wine, mince pies and ginger biscuits will be available in the dining room.

Rachel Elliott, Registrar & Marketing Manager at St. Peter's School, comments: "We do hope that members of our local community will join us at this fantastic event either by selling their wares on a stall or coming along at 1pm on 26 November to enjoy the festivities. We very much look forward to welcoming you to our school Christmas Fair.

Rachel Elliott

COFFEE AND CAKE



Please come along to 11 Grange Close on Wednesday 7 December from 10.30 - 12.30 and enjoy coffee and delicious homemade cake. There will also be individual Christmas cakes, fudge and shortbread to buy (cakes are perfect size for a hamper or gift). Proceeds for SNUG, an Exeter based charity providing emotional and practical support to Devon parents of sick or premature babies.

Jill Dixon

LYMPSTONE GARDEN CLUB



On Tuesday 22 November, our Garden Club evening will start with a short AGM followed by a 'What Tree Where?' talk by our very own expert gardener Sheila Parker.

The event is at 7.30pm in the Village Hall Function Room. Entrance is £3 on the door – all are welcome, there's no membership fee. Refreshments available, and plants and preserves on sale.

With Christmas approaching, we also wanted to give you advance notice of what should be a very popular event with Sarah Pepper – on the evening of Tuesday 6 December in the Methodist Hall at 7.30pm. Entry is £6 on the door.

Sarah is back by huge popular demand. She is an exceptional Devon florist who regularly works with the National Trust and RHS. She's known for her natural, classic and contemporary approach to floristry, and is much in demand.

We've been lucky enough to secure her for this 'garden-inspired' Christmas arrangements demonstration, after which her beautiful arrangements (different from last year's demo) will be raffled and Sarah will sell items to use in making your own Christmas displays. We'll also welcome in the season with festive refreshments.

Our events leaflet for 2016-17 is now available – outside the village hall and at various other local outlets – and also online on the Garden Club page of the village website www.lympstone.org

News from the Garden Club is sent out regularly by email – if we don't have your details and you'd like to be kept up to date with what's coming up then please send your name and email address to windygardener@yahoo.co.uk

Gail McKenzie

LYMPSTONE ART GROUP TALKS AND WORKSHOPS



On Wednesday 30th November we are running a Workshop on "Quick Sketching" by Naomi Hart. (This replaces the planned workshop on Life Drawing which has been postponed to next year). The workshop will run from 10am to 4pm at Lympstone Sailing Club. Cost £30. To book a place or for further information contact Mai Targett Tel 01395 271915 email maitargett@btinternet.com

Judith Carter

LYMPSTONE T.A.P. - (THIRD AGE PROJECT)

T.A.P. meets on Friday afternoons at 2.30 p.m. in the Methodist Church Hall, Lymington until the 18th November, 2016 restarting again in early February. Our poster of events is on the notice board under the bridge at The Strand, or can be sent by email - please contact:- d.budgen@sky.com

On the 7th October we had Mr. Ron Howell who gave us a very interesting talk and computer presentation about "3,000 Years from Under the Sea". He belongs to a Sub Aqua Club which explores wrecks on the Devon coast for hidden treasures. The group had found a massive number of 17th century gold coins from one wreck off Salcombe and its possible involvement in the white slave trade which are now in the British Museum. They also found lots of other valuable artefacts. We plan to invite him again in our Spring 2017 programme.

On the 21st October we had an afternoon of games, a quiz and tea. On the 28th October we had Mr. Graham Banks who told us about "Jane Austen and Marriage". This was very interesting and he explained how Jane Austen used the status of your family, which was very important as to who you could marry, in her books.

On November 4th we will be having "Questions and Stories" by Mr. Allen and Mrs. Eileen Dolley.

November 11th - "Gardeners Travels in Madeira" - Mr. Nicholas Baker.

November 18th - "Things I do for Hospicecare" - Miss Leslie Weeks.

We would welcome any new Ladies and Gentlemen to join us at any of our meetings. We look forward to seeing new Members.

Dianna Budgen

THE ANNUAL CHRISTMAS ARTS & CRAFT FAIR, SATURDAY 3RD AND SUNDAY 4TH DECEMBER

art

Brook End Studio from 11am until 5pm (opposite Harefield Cottages). Lots of hand crafted gifts and cards made by local artists! Please come and support us. Deb Mitchell and Lin Holdridge

Lin Holdridge

MOBILE LIBRARY TIMETABLE

Friday Dec.2nd
Meadow Close. 10.15-10.35 am
Car Park. 10.45-11.45 am

Diana Letcher



EXE ESTUARY TRAIL



Last December the Trail Action Group wrote to Devon County Council with a request for an update on support for an off-road route for the EET through Lymestone (as identified in our Neighbourhood Plan). David Whitton, DCC Head of Highways, replied and placed responsibility for any progress on Lymestone Parish Council. He proposed that Lymestone Parish Council should develop the route into a viable proposition, consider how it could be funded, and get permission from Network Rail.

When we met with Network Rail in 2014, they indicated that there are a number of possible options to route the Trail along the railway cutting.

The Trail Action Group has approached several civil engineering firms and Sands Consultants (an Exeter-based firm) have met with us and provided considerable time and advice at no cost and have provided an outline plan with proposed tasks and costs. These include a initial drawings of the route and structures needed for consideration and approval by the Parish Council. .

The Parish Council has agreed expenditure of an estimated £2,000 for this initial work and possible commitment of a further £9,000 to cover a topographical survey and detailed drawings for construction.

We will be discussing these plans with both Network Rail and Devon County Council as we will need their agreement and support.

Update on cobbles

We have continued to ask Nigel Flower, Safety Officer at Devon County Council, about when the proposed cobbles (agreed in mid 2015) will be laid. He has now stated that they will be done in the current financial year. However this will not change the need for an alternative route for the trail alongside the railway line

Judith Carter

DIGGING FOR OXFAM



I dig / do simple garden jobs, you pay £10 an hour and it all goes directly to Oxfam 276569.

Jenny Moon

VILLAGE WEB SITE



We hope you will continue to send us entries for our village website

Phil Corcos

LYMPSTONE WI

On Wednesday the 2nd November we celebrated Lymptone WI's 97th birthday (another excuse for some delicious home-made cake) with the hope that we can continue to be a vibrant and relevant part of our community well into our next hundred years.

Our birthday speaker was zoologist Dan Freeman, whose early work for the Natural History Museum and the RSPB led him to the BBC in Bristol and then on to a career as a freelance film-maker and writer. Dan has travelled the world in his quest to capture some amazing moments on film – which may not always be happening quite as they appear!

After the tea break our Treasurer, Heather Stratford, told us that next year's membership subs of £39 would be due for payment at the January meeting, and that our branch would be resuming offering a Denman learning bursary to members in the New Year, with names drawn by ballot at the Christmas meeting.

Our president, Diana de la Rue, mentioned that the latest litter pick had been very productive (although that might not necessarily be a good thing) and that the final pick of the year would take



place on Tuesday the 22nd November – volunteers welcome! She reminded us that the County Carol service would be taking place at Exeter Cathedral on Tuesday the 6th December at 2.15 pm, and that Lymptone WI would be hosting the Group Carol Service at Lymptone Parish Church on Monday the 12th December at 2 pm. Our New Year Evening meal at the Redwing has been arranged for the evening of Wednesday the 18th January.

Our final meeting of 2016 will be a members-only event held on Wednesday the 7th December at 2.30 pm in the main Village Hall. Entertainment will be provided and members are requested to bring a small plate of food (more delicious cake) and a bran-tub present to the value of approximately £3.

We are very pleased to welcome anyone who thinks she might be interested in finding out about the Lymptone WI. For more information please phone Diana de la Rue on 01395 274099 or find us on the village website.

Lindy Newton

(A big thank you to all our WI members who keep some parts of our village tidy. Perhaps it is the litter picking which keeps our WI members slim. Ed)

**LYMPSTONE
FURRY DANCE
CHRISTMAS
EVENT SAT 3RD
DEC**



Our annual Santa, Mulled Wine and Mince Pie morning will put you in the mood for the Christmas Season.

Join us at the Globe Inn, doors open slightly earlier this year at 10:15hrs and Santa will arrive through a snow shower in his chauffeur driven vintage car at 10:30hrs. Be there in time to greet him in the snow. He will then make his way to his special grotto where the children can meet him.

The popular Lymptone Training Band will add to the atmosphere with seasonal music while you enjoy your mulled wine and mince pie. As usual you can try your luck at the tombola and Christmas Draw.

Entrance at the door £2:50, which includes mulled wine or coffee, a mince pie plus a free drink and biscuit for your children. Visit to Santa's grotto and small gift £1 per child.

Come along and join the festive fun from 10:15 to 12:15hrs.

Chris Doak

LYMPSTONE PRESCHOOL have spaces available for 2.5 and 3 year old children. Please contact Vicki

07792846555 to book a visit to look around.

DISCLAIMER This news letter is compiled from emails sent to the editor by numerous people and very little of the information is checked before publishing which is done in good faith.

Chris Carter, Editor

Advertising

**FRIENDLY NEW
KLEENEZE**

DISTRIBUTOR I will be in and around the village delivering catalogues. Online

and catalogue orders taken tel

07401553455
Facebook page: Helen's Online Offers



DustAway



All Work and no play, we are here to help
Friendly Efficient Cleaning Service
Lymington Based

Weekly, fortnightly, monthly
One off cleans ie moving house, holiday lets,
End of tenancy cleans, just redecorated or a spring clean
We also offer an ironing service

All materials supplied. Fully insured

Please call Office 01392 427776 or Mobile 07879427333

The Little Plumbing Company



The Little Plumbing Company



Fully Qualified & Insured Plumbers
NO Callout Charges & Free Estimates
See our reviews on 'Our Local Expert'
www.thelittleplumbingcompany.co.uk

01395 741962



Water Safe
QUALITY ASSURED



gas safe
REGISTER



East Devon
water softeners

EAST DEVON PRESSURE WASHING

Fully Insured
FREE Quotations

Mob: 07815 514997
email: edpw@gmail.com

**Drives
Patios
Decking
Paths
Steps**

GUEST ANNEXE Available through www.airbnb.co.uk Situated in Jackson Meadow, Lymington Double room with ensuite shower room plus living space with possibility of extra bed/cot From £50 per night.

NOV/DEC @ THE GLOBE INN

01395 263166

www.globelympstone.co.uk



The Globe Inn



@GlobeInnLymp

Quiz night every Tuesday from 9pm

DATES FOR YOUR DIARY:

SCOTT PHILLIPS: **Fri 11th Nov**

Fri 25th Nov: THE REAL ME

THE HUMAN JUKEBOX: **Fri 2nd Dec**

Fri 9th Dec: DAVE RICH

IAN BOYD: **Fri 16th Dec**

Fri 23rd Dec: GO TELL ALICE

****NYE** JOSH SPENCER – DISCO**

**BOOK TODAY FOR REMEMBRANCE SUNDAY LUNCH
SUNDAY 13TH NOVEMBER**

**MEET FATHER CHRISTMAS & JOIN US FOR MULLED WINE & MINCE PIES
SATURDAY 3RD DECEMBER**

Food Special Offers:

All our meats are now sourced from the Butchers at



**DARTS
FARM**

Monday Night- Pie Night ONLY £5.50

Sunday Lunch

only £8.95, 2 Courses for £10.95 or 3 Courses for £12.95

Choice of Beef, Gammon, or Lamb.

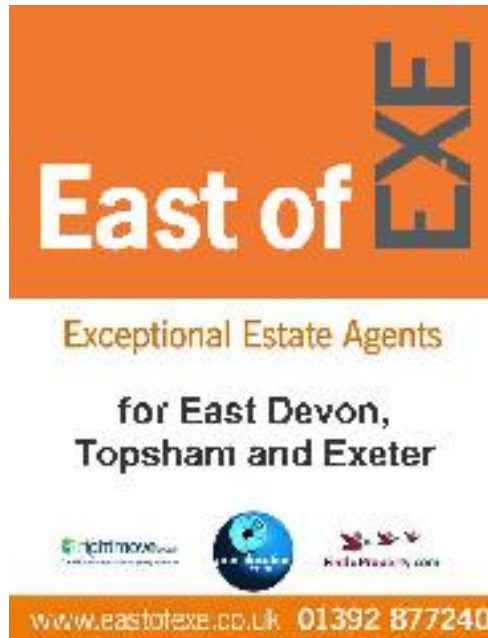
Christmas

Limited tables available book now to avoid disappointment

Premiership Football Fan? Exeter Chiefs fan?

Keep up to date with all your favourite teams with live sport shown on





East of EXE

Exceptional Estate Agents

for East Devon,
Topsham and Exeter

rightmove | globe | Media Property

www.eastofexe.co.uk 01392 877240

LYMPSTONE HERALD ADVERTISING RATES 2015/2016

Copies of the Lymptone Herald are delivered free to every household in Lymptone (approx 1100) every month with a further copies being sold through the village shops. Please send your enquiries to Chris Carter, Editor, Lymptone Herald, chriscarterathome@hotmail.com or 01395 274104

Costs per issue

- £90 a page
- £45 a half page
- £22.50 a quarter page
- Lineage in the *Small Adverts* cost 60p a line or £1.20 a line if boxed.
- Boxes (approximately business card size and 6 or 8 to a page) cost £12 – £15 a box.

Graphics can be included in any box.

Discounts are normally available on annual contracts.

Receipts are normally issued annually.

PEOPLE OF LYMPSTONE ARE YOU THINKING OF SELLING YOUR HOME?



As a resident of Lymington and a local estate agent, I am well aware of the many benefits of living in this much sought-after, lovely village and I believe the in-depth local knowledge this affords, gives me a huge advantage when trying to sell your home and get the best price.

At Wilkinson Grant & Co, this local knowledge is supported by an award-winning professional team including in-house surveyors, financial and legal experts with a track record of achievement dating back over 20 years, which combine to ensure that your property move is handled with complete professionalism from start to finish.

For free, confidential advice please contact Joel Moore - j.moore@wilkinsongrant.co.uk



THE THINKING PROPERTY AGENT

01392 875000

wilkinsongrant.co.uk

SALES LETTINGS PROPERTY MANAGEMENT ACQUISITIONS
LAND & PLANNING NEW HOMES DEVELOPMENT MORTGAGES SURVEYS

Hilton Barnfield Architects



We offer a personal, creative and professional design service for your project.

- Design expertise
- Planning applications
- Building Regulations documentation
- Detailed drawings
- Construction co-ordination

Call for a **free initial consultation:**

01395 224 829

www.hiltonbarnfield.co.uk



PAINTER/DECORATOR and general maintenance. Over 20 years experience. Call Jim on 01395 277813/ 07929606895

CALPE, SPAIN : 2 bedroomed apartment for rent. sleeps 4-6 people . beach front, 3 pools, 2 tennis courts. tel: Jane Moffatt 279952.

TWO-BEDROOM HOLIDAY COTTAGE in centre of village available for minimum 2 night stay. Call 01395 488123 or go to www.lympstoneholidaycottage.uk

SIMON QUICK THE LOG MAN
For all your log, coal, kindling & gas supplies Tel 01395 267490

**COMPUTER
REPAIRS**

**ELECTRO
COMPUTERS**

NO FIX - NO FEE

01395 548151 / 07944 051987



PETER J ACCA
Property Maintenance
PVCU WINDOW REPAIR SPECIALIST
Replacement Double Glazed Units

theaccas@yahoo.co.uk
07801365097
01395489791
53 Evergreen Close
Exmouth EX8 4RR

PAINTER & DECORATOR

Free Advice & Quotes



**Specialising in superior high quality
Interior painting and decorating
Reliable & trustworthy
No job too small**

Peter J Bond

Mobile: 0797 100 6957

Office: 01395 265202

Email: bondpeterjohn@hotmail.com

JEFF CROMPTON

Greenways, Courtlands Lane
Lymestone

For Superior Quality Home
Improvements and All Types of
Building Work & Renovations
Plus Kitchen & Bathroom Installation

Mobile: 07768 282 129

Email: jeffcrompton@btinternet.com



LYMPSTONE HAIR & BEAUTY STUDIO

**WALK IN's AND EVERYBODY
WELCOME!**

Perms, Barbering, Shampoo and Sets,
Colouring, Highlights, Foils,
Massages, Waxing, Gelation Nails,
Facials, Makeovers, Tanning and more
**For an appointment call us on 01395
274089 Or text only on 07552313653**

DOG GROOMING



Kind & Qualified Groomer.
Commissions for PET PORTRAITS
in pastel also undertaken.
Make Superb Presents.
(Examples of work can be viewed).
Tracey Crompton, Greenways,
Courtlands Lane, Lymestone.
Tel: 01395 272815 /07973 986 268.

FOOD WITH FLAIR CATERING

Small and Large Events -
Menus to Suit your Budget
Telephone Shirley or Michael
on 265147 or see our Website
www.foodwithflair.co.uk

CLOCK REPAIRS

Terence C. Matthews - Horologist
Westminster Chimes
Wall Clocks
Grandfather / Grandmother Clocks
Dial Clocks



Long Case Clocks
Carriage Clocks
Free estimates and house visits
Tel: 01395 273563

Find some winter sunshine!
**Comfy casa near the Costa Blanca,
Spain**

Peaceful, two-bedroomed home. Roof
terrace, gorgeous views, communal
pool and tennis. Beaches, cycling, golf,
hiking and more. Suits all ages.
Flights from Exeter & Bristol

Lymestone residents 15% discount
Tel: 07986 607610
www.algorfaholiday.com

FRENCH AND ITALIAN TUITION

Available with qualified and experienced teacher. Can teach all levels up to A level. Please email clairearrowsmith@hotmail.com for more info.

ELECTRICIAN Specialising in domestic work; Happy to do small jobs. Call Simon on: 07985 963075

FRENCH HOLIDAY LET

Vendee: overlooking golf course and only 10 mins drive from superb beach. 3 bedrooms, 2 bathrooms, communal swimming pool and tennis courts. From just £350 per week. Tel 01395 272032 or email: annhurley1@sky.com

ROOFER specialising in pitch roofs and flat roofs, fascias and guttering, general maintenance, pest control, repairs, fully insured. Please call for a free quote. 01395 277236 075 28 970950. Liam@liamandemma.com.



Marketing & PR

No time to promote your business?

Need new brochures?

Want to update your website?

Want to reach more customers?

**Take the first step by
contacting us!**

lesley@hedgerowmarketing.co.uk

SWEDISH MASSAGE

Calm Swedish massage and holistic therapy, Japanese rejuvenating face massage. Lovely beauty room, parking, appointments available 07958599387



SMALL ADS

LYMPSTONE POSTCARDS are on sale in the Central Stores and cafe. Village photograph greeting cards are still available on request from Frances Longhurst 263495

PICTURE FRAMING. For all your framing requirements; also frame restoration & chair caning. Caro Ambridge 01392 877460, Topsham.

TUTOR AVAILABLE Local experienced Primary School Teacher available to teach Maths and English. Can also prepare children for SATS, Colyton and 11+ exams. Reasonable rates. For more information call Becky on 07806554106 or email: bekychurch_@hotmail.co.uk

PIANO with a VIEW Lessons for all ages, beginners and improvers, "purely for pleasure" and ABRSM exams to Grade 8. Theory to Grade 5. Tel: Judy Joss (BA Mus, Dip Ed) on 222749

MATHS TUITION Experienced tutor available to teach primary to GCSE level maths. Reasonable rates Tel: Jane Moffatt on 279952 or **07730877889**

FOOT HEALTH PRACTITIONER - Lindsey Waddell MAFHP. Nail Cutting and Treatment of Corns, Callus and Verrucas. Home Visits. 01395 263496

PROPERTY MAINTENANCE - Carpentry, Flooring, Fencing, Gates, Decking, Bathrooms, Kitchens, General Repairs. Free advice & estimates. James Waddell 01395 263496

PRISTINE CLEAN - Domestic ironing and cleaning services. Local lady. Call Niki - 01395 740727

ACCOMMODATION

WITHALL'S HOUSE BED AND BREAKFAST. A modern and spacious home close to the heart of the village. Ample parking and flexible accommodation. Call Pete and Jan Hardy on 01395 488123 Or visit www.lympstonebedandbreakfast.co.uk

CYGNET COTTAGE

Quiet self-catering cottage just yards from the foreshore. Sleeps 3/4. From £70 per night. Visit www.cygnetcottage.net or ring Demelza on (01395) 272243

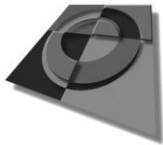
WHATS ON

NOVEMBER

10 Firecracker Open Mic – Saddlers
11 Gardeners Travels in Madeira
11 & 20 Film Club –On the Waterfront
13 Shoeboxes to Church
18 TAP Things I do for HospisCare
22 Litter Pick
22 Lympstone Garden Club AGM
23 Lympstone History Society Talk
24 Public Meeting -Dinan Way 7pm
25 The Real Me – The Globe
26 Children's Hospice Coffee Morning
26 St Peters School- Christmas Fair
30 Workshop, “ Quick Sketching”

DECEMBER

2 Mobile Library
2 The Human Juke Box-The Globe
3 Furry Dance Christmas Event
3-4 Brook End Christmas Fair
5 Hospiscare Concert- Exmouth
6 Xmas Flower Arrangement
7 SNUG Coffee Morning
7 WI
9 Film Club- Hail Caesar
9 Dave Rich- The Globe
12 Afternoon Carol Service
12 Carol Singing round the Village
16 Ian Boyd – The Globe
19 Carol Service at the Church
21 Scratch Nativity
23 Go Tell Alice- The Globe
31 Josh Spencer Disco – The Globe



Optima Graphics

Topsham Ltd

silk screen, digital & litho printers

*We provide a high quality, good value
and prompt printing service.*

Silk Screen
 Vinyl Stickers
 Estate Agent Boards
 Printing on:
 Metal, Acrylic,
 Plastic, Wood

Large Format Digital
 Banners
 Display Panels
 Window Graphics
 Pull-up Display Stands
 Magnetic Vehicle signs

Litho
 Brochures & Leaflets
 Stationery
 Labels & Invitations
 Pads
 NCR sets

T: 01392 873822

E: sales@optimagraphics.co.uk W: www.optimagraphics.co.uk

20b High Street, Topsham, Exeter, Devon EX3 0EA