

THE LYPMPSTONE HERALD



ART, FUNDRAISING AND EVENTS APLENTY

The village activity is on the increase with many events coming up to keep us entertained through the summer months and the estuary coming to life with plenty of folks in various boats. In this month's issue read about the village's annual cricket match (p.8), the art

group exhibition (p.18) and the amazing primary school children fundraising for the school's playgroup equipment fund (p.19). There's also a peek into Lymptstone's glorious past in this month's edition through an extended Lymptstone Lives article (p.16).

Editors: Claire and Rob Hilton - theherald@lympstone.org | 07739969311

Copy Editor: P Acca | Cover Art: Louise Banks

Copy deadline for the next issue : Sunday 3rd June, 6pm by email

Distribution by the Telfers Tel. 272275

Village website: www.lympstone.org | webmaster@lympstone.org

PARISH COUNCIL NEWS

Cllr Jenny Clark was elected Chairman again for this year and Cllr Kathy Rogers was elected Vice-Chairman. This team will lead the Parish Council up to the next full elections in May 2019. Some members have already hinted that they may not stand for election again and so there could be room for some new faces and new ideas.

New Parish Clerk Lucy Tyrrell attended this meeting and gave a presentation about the new General Data Protection Regulation. This will be in force from 25th May and will affect the way in which the Parish Council hold details about any individuals and what it does with that information. If we hold your details you may get a message asking that we can continue to hold them. This is usually so that we can write to you about something. We don't sell these details and may only pass them to others as part of an email conversation that will involve you.

A Devon Air Ambulance Night landing site took a step closer when the Parish Council agreed to fund this share for this from its balances. DAA will fund about half of the cost too. The Clerk was looking into additional funding but reported that whilst there might be some opportunities for this it could take some months to get a decision. The

Parish Council felt that it was wrong to wait and this would be a good use of its funds. **The Annual accounts for the Parish Council were signed off.**

Underhill car park is included in the EDDC Car Parking Review. There are several changes proposed that affect Lympstone including the loss of the Village permit. Cllrs Helen Dimond and Rob Hilton will be submitting the Parish Council's response.

Anyone else can local residents, businesses, organisations, town and parish councils, visitors to the area etc. can have a say by filling in the online questionnaire before 1 June 2018: <http://eastdevon.gov.uk/consultation-and-surveys/car-park-review/>

*Clerk to the Council: A J Le Riche, DMS,
8 Drakes Gardens, Drakes Avnue,
Exmouth, EX8 4AD*

*Tel: 279665 / 07866 535580
clerk@lympstone.org*

Annual Accounts 2017/18 & Bank Reconciliation

Current Account		
Opening balance at 1st April 2017		£47,862.70
Receipts		£67,877.00
Total receipts		£115,739.70
Transfer from dep ac		
Total paid in to current ac		£115,739.70
less, Payments		£61,736.56
Net balance		£54,003.14
less, Unpresented cheques		£388.00
Receipts not on statement		£0.00
Balance at Bank		£54,391.14

Deposit Account		
Balance at 1st April 2017		£161.44
Interest to 1st March 2018		£0.21
Transfer to current ac		£0.00
Total		£161.65
Total Funds		£54,164.79

Allocated balances 31st March 2018			
Elections			1,500.00
Reserve for Village hall car park			15,000.00
NP Projects			8,856.50
Total allocated balances			25,356.50

THANK YOU EVERYONE.....

who has put their change or donation into the Exmouth & Lymestone Hospiscare collection tin in Central Stores. We are so grateful to the shop for supporting our local Charity and it is true what our grandparents used to say 'pennies make pounds'! The tins recently collected from the shop have raised £101.21 !

As our Nurses look after some Lymestone residents, local support is so appreciated. Our new 'Hospiscare @ Home' nurses can now provide 24hr care and have already made a huge difference to 100 patients and their families in Exmouth and Lymestone.

Frances Longhurst
Trustee

THE GLOBE INN

01395 263166

www.globelympstone.co.uk

*With heavy hearts it's now time to go,
To be newlyweds & allow our love to grow.*

*For 5 years we hope we have served you well,
& created memories which we shall forever tell.*

*We feel so lucky to have made so many good friends,
& our love for you all will never end.*

*Thank you all for your love & support,
& the good news is, to our new home we shall not need much
transport.*

*We are to stay in this beautiful village we all adore,
& we invite you all to join us one last time on the dancefloor!*

*We shall start at 8,
so don't be late,*

*As on Friday 25th of May, The Globe is the only place to be,
But there is to be no sadness or tears, only love, laughter &
plenty of glee.*

*Let us raise a glass or 2... perhaps a few,
To show our love & thanks to our fabulous friends.
YOU!*

*All our love forever & always, Ange, Mike, & May.
xXx*

LYMPSTONE GARDEN CLUB

Another date for your diary – on Saturday 12 May we're holding our annual Coffee Morning and Plant Sale in the Methodist Church from 10am to 12noon. Lots of lovely flower and veg plants, and a raffle and seed swap.



Do join us and stock up for the summer, and if you have any plants you could kindly donate to the sale then please bring them along at the start of the morning. Entry is £1 on the door (children free), which includes a free coffee and biscuits.

We are now gearing up to the Annual Show in the Village Hall on Saturday 18 August, and also planning our next year of events. You can pick up an events leaflet at the show, or around the village.

News from the Garden Club is sent out regularly by email – if we don't have your details and you'd like to be kept up to date with what's coming up then please send your name and email address to windygardener@yahoo.co.uk

Gail McKenzie

GOOD NEWS FOR LYMPSTONE TAP

Because the Speakers are now very expensive and the shortage of Members we thought that T.A.P. would have to finish after the Spring programme. I am very pleased to say that we will be continuing in the Autumn. We are very grateful to the Lymptone Parish Council who have given us some funds. At the moment we have decided to meet fortnightly on the following dates:

September 14th and 28th,
October 12th and 26th,
November 9th and 23rd.

We would like to welcome anyone over the age of 60 years to our meetings which are held at 2.30 p.m. on Friday afternoons at the Methodist Church Hall, Lymptone. Doors open at 2.15 p.m.

Diana Budgen
01395 278152
d.budgen@sky.com

PARISH CHURCH

Christian Aid Week, to help fight injustice and poverty, is 13 - 19 May. There are many ways to donate. You may receive an envelope and a call from one of our collectors or send your donation in the envelope by freepost, go online to caweek.org, call 08080 006 006 or text GIVE to 70040 to donate £5.

Good Vision. You may think you have had some healing to your sight when you are next in church-possibly but more probably due to the recent upgrade in lighting!

Open Door Exmouth, which is supported financially by our church, has been at the heart of our community for over 20 years. It is a Christian charity, motivated by the call to 'love your neighbour,' seeking to make a positive difference in peoples' lives and to help those most in need in our town.

There are many opportunities for Volunteer roles. At the Child Contact Centre: in the Community Café: as a Kitchen Assistant, assisting in the Coffee Bar, helping in the Laundry, as a Befriender, or Support Worker, Reception; on the Door; or helping in one of the projects. The manager, Helen Tribble, will be speaking at church on June 3rd.

Meet the Rector at the Swan 10th at 11; 17th at noon; 24th at 11; 31st at 1.

New members of the PCC-elected at the recent Church Annual Meeting were John Billington and Tim Whiter

Sid Humphries - A special mention for Sid and in his appointment to the position as Vicar of the neighbouring Whitecross Mission Community.

Tick Tock –the meeting of songs, games, stories and refreshments for Pre School children and their parents/carers. Fridays 0900-1100.

Monthly Coffee Mornings. Note there is a vacant slot for the May coffee morning on 29th May so if you would like to take it on please add your name to the list at the back of the church.

Quiet Morning in Church on Monday on 14th May, organised by Demelza Henderson, from 9.30-12noon. It's part of the Thy Kingdom Come season, and entitled 'the River of Life'. Everyone welcome - refreshments throughout, and people are invited to drop in for as long or short as they can (they don't have to stay all morning!)

Brian Mather

LYMPSTONE'S PARTY ON THE SLIPWAY

You will want to keep the afternoon of Sunday 1st July free when you hear what Lympstone Entertainments has planned! As a thank you to the village for the support it gives our many events, we are arranging a free show to which all villagers are warmly invited. Look out for further details contained in your invitation in the pages of the June Herald. Be sure to be at there to enjoy music, a party atmosphere and a performance by hilarious comedy entertainer, Goronwy Thom, (surely the strangest name in show business!).



Goronwy has toured the world bringing his unique style to countless audiences including performing at The National Theatre, taking his cabaret troupe to the Edinburgh Festival, and Just For Laughs in Montreal. He is regularly seen entertaining passengers on ocean liners, including Cunard Lines. He has performed street theatre shows in most countries across Europe and recently in Beirut!

He comes to us directly from a West End run and from Sunday night at the London Palladium. After wowing the crowds in Lympstone he will fly off to South Africa to star in the biggest comedy festival in Africa.

His shows amaze and amuse audiences of all ages. Improvisation, circus skills and an infectious energy make each of them an unmissable, unique experience. What is planned and what is chance?

Expect the unexpected and get yourself down to see the show on 1st July! Look out for the invitation in June's Herald for full details. We are looking forward to seeing you there!

Viv Day
Lympstone Entertainments

PLAY UP! PLAY UP! AND PLAY THE GAME!

There's a breathless hush in the close tonight,

Ten to make and the match to win...

The Annual Cricket Match comes to the fields of Harefield on Thursday 14th June, at 6pm, when the men (and women?) of the village take on the Gentlemen (and Ladies?) of St Peter's School, in the annual Cricket Match. Twenty overs each, but rather more sedate than the professional 20/20 version.

On a beautiful sunlit evening, it is one of the most enjoyable events of the summer, with a bar and a barbecue, ice creams and prizes, a pair of partial umpires and the Last Great Scorer (Tony Day in his own box), all accompanied by the wonderful Lympstone Training Band.

Last year provided celebrity players and a nail-biting finish, in the best traditions of this annual fixture. Will we see the same again? Come and enjoy a proper old-fashioned game of cricket in the beautiful setting of St Peter's School, with its views over the estuary and the Haldon Hills. Entrance and parking is entirely free, but proceeds from the bar and barbecue, ice cream and raffle, will go to support the Friends of Lympstone Church, who organise this most enjoyable of annual occasions. Bring a rug or folding chair, or stroll round the boundary and prop up the bar.

Harland Walshaw

LYMPSTONE CRICKET CLUB

The village cricket season is now in full swing with two fixtures played against Newton Poppleford and Woodbury.

Newton Poppleford v Lympstone 26th April 2018

Lympstone lost the toss and were asked to field on a chill and cloudy April evening.

Result

Newton Poppleford 157-4

Burton 1-8, David Wright 1-10, G Abrahams 1-19

Lympstone 118-9

Burton 40 no, Maytum 19, McGregor 19,

Lympstone lost by 39 runs.

Scorer's man of the Match: James Burton, best with bat, best with ball.

Woodbury v Lympstone 2nd May 2018

Despite a wet and windy evening, an almost unplayable pitch and bad light throughout, two sides keen to win this local Derby produced a great game of cricket that was closer than the scorebook suggests.

Result

Lympstone 126-9

Harris 31 ret, P hall 30 no, James 12, Woodbury 113-4

P Hall 2-10, Gibbons 1-22, McGregor 1-25

Lympstone won by 13 runs.

Scorer's man of the Match: Patrick Hall, three sixes, plus the over that won it.

Scorer Day

THE RETURN OF THE DANTE QUARTET

Just a year ago, the Dante Quartet began their series of six summer concerts in Lymptstone Church, playing all the Beethoven string quartets. It was a huge success, and well over 1,000 tickets were sold. "There is something truly magical about the Dante Quartet," wrote Jenny Clark, just one of many tributes to the excitement of their playing.

On June 24th they return to the village to perform a single concert. Picking up from where they left off, they will play the last Beethoven Quartet, Opus 135 in F, followed by quartets by two great Russian composers – Shostakovich No. 4 in D, and the first Tchaikovsky

quartet. Shostakovich quartets are full of simple melodies and strong rhythms. No. 4 is particularly delicate. The slow movement of the Tchaikovsky moved Tolstoy to tears when he first heard it.

The concert takes place at 4pm on Sunday, 24th June in Lymptstone Parish Church. Tickets at £15 each can be bought by emailing boxoffice@lympstone-entertainments.net, or by phoning 01395 272243.

You can also buy them directly from Demelza at 2 Brookfield Cottages, Lymptstone EX8 5ES

Harland Walshaw

Photo by Nick Harries



FURRY DANCE CREAM TEAS

Our annual Sunday cream tea event will be held at the beautiful venue of Four Winds, Sowden Lane, on Sunday 24th June between 2:30 and 4:30pm. As usual the Lypstone Training Band will be playing a musical selection, directed by Roger Riggs. The Furry Dance photo archive will be on display and if you have any photos from previous years you would like us to add, please bring them along.

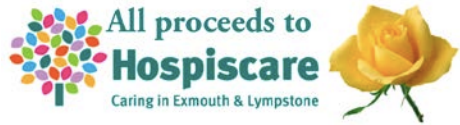
Our next big event will be the Furry Dance itself on Saturday 4th August, more details in the next Herald. We have started to receive requests for Pannier Market pitches and our priority is to accommodate regular and local supporters. Places are limited so any village individuals or organisations wanting a pitch should contact Pauline Stewart as soon as possible on 01395 263097 or email hollywell@hotmail.co.uk.

Chris Doak

ONE SPLENDID SUMMER

Summer 2017 saw some of the keenest gardeners in Lypstone open their gardens for the weekend in aid of Exmouth and Lypstone Hospiscare. Now, exactly a year later, behind-the-scenes films of all those beautiful gardens are being shown in the Village Hall. In the main film each gardener gives a guided tour of their own garden,

whilst in the two supporting films Sheila Parker gives a tree and flower masterclass and we meet up with the scarecrows again.



Sunday 15 July, 7.00 pm, Lypstone Village Hall

Tickets from sue.m@lypstone.net,
suki.commin@googlemail.com or
parkeracorns@gmail.com.

£8 to include glass of Pimms. Again, all proceeds to our local Hospiscare.

Sue Mildenhall

Professional Eye Care and it's local



**Comprehensive eye examinations
& contact lens services.**

**Latest ZEISS dispensing technology
Home Visits**

New patients always welcome

*Benefit from optical excellence today at
Topsham's independent optician.*

Open 6 days a week: Tel 01392 873612

Peter Tosh Opticians
FOCUSING ON YOU

21 High Street, Topsham.
www.petertoshopticians.co.uk



FLOOD RISK MANAGEMENT

Culvert repair work at Pretty Corner

To help reduce the risk of flooding at Pretty Corner, Devon County Council is planning to repair the culvert under Longmeadow Road and to install a liner to ease the flow of water. The work is scheduled for **21st May to 8th June and will involve closure of part of Longmeadow Road for the 3 week period.**

Many of you will remember the storms in November 2012 when 10 properties at Pretty Corner were flooded. This is an area that is prone to flooding, and the work is therefore important. However, it is recognised that it is only the first phase. Other work to increase the level of protection will be considered by Devon County Council following the hydraulic modelling study (part of Lympstone Flood Risk Management Project).

Flood risk protocol for developers

In light of recent concerns about the drainage plans of residential developments in the village, Lympstone Flood Resilience Group has developed a draft protocol to highlight the flood risks and communicate key principles for drainage. Our aim is to encourage developers to discuss options with us prior to submitting planning applications. We are currently gaining feedback from the flood risk agencies (Environment Agency, Devon County Council, East

Devon District Council, and South West Water) and local developers.

Upper catchment study

Funded by EDDC's Parishes Together Fund, we recently commenced work on this study. The aim is to understand the contribution of surface water runoff from the upper Wotton Brook catchment to the flood risk in Lympstone. A start-up meeting was held on 25 April including our main contractor, a catchment specialist from Westcountry Rivers Trust, a soil management specialist from the Environment Agency, and the leader of Woodbury Flood Resilience Group. The plan is to conduct a strategic review of potential sources of surface water runoff in the upper catchment followed by observation of runoff pathways during significant rainfall events.

If you have any questions or comments, please feel free to contact me.

Cllr Phil Corcos

Chair, Lympstone Flood Resilience Group

Tel. 01395 272973

Email: philcorcos@gmail.com

CORRECTION FROM LAST MONTH'S HERALD:

The LFRG remains under the leadership of Phil Corcos; Clem Davies is the Chair of the Lympstone Flood Risk Management Project steering group.

JEFF CROMPTON

Greenways, Courtlands Lane
Lympstone

For Superior Quality Home
Improvements and All Types of
Building Work & Renovations
Plus Kitchen & Bathroom Installation

Mobile: 07768 282 129

Email: jeffcrompton@btinternet.com

LYMPSTONE HAIR & BEAUTY STUDIO



WALK INs & EVERYBODY WELCOME!

Perms, Barbering, Shampoo and
Sets, Colouring, Highlights, Foils,
Massages, Waxing, Geleration
Nails, Facials, Makeovers, Tanning
and more.

**For an appointment call us on 01395
274089 or text only on 07552313653**

DOG GROOMING

Kind & Qualified Groomer.

Commissions for PET PORTRAITS
in pastel also undertaken.

Make Superb Presents.

(Examples of work can be viewed).

Tracey Crompton, Greenways,
Courtlands Lane, Lympstone.

Tel: 01395 272815 / 07973 986268.

Emma's House - Lympstone Childminder.

Reliable, Ofsted approved childcare
in a home from home environment.

Spaces available for babies and
children. For more information

please contact Emma on
07969602440 or visit my Facebook
page: Emma's House Lympstone
Childminder.

CLOCK REPAIRS

Terence C. Matthews - Horologist
Westminster Chimes

Wall Clocks

Grandfather / Grandmother Clocks

Dial Clocks

Long Case Clocks

Carriage Clocks

Free estimates and house visits

Tel: 01395 273563

Find some winter sunshine!

Comfy casa near the Costa Blanca, Spain

Peaceful, two-bed roomed home.
Roof terrace, gorgeous views,
communal pool and tennis. Beaches,
cycling, golf, hiking and more. Suits
all ages. Flights from Exeter & Bristol.

Lympstone residents 15% discount
Tel: 07986 607610
www.algorfaholiday.com

Norton Plumbing & Building Contractors

All aspects of plumbing, building, roofing work undertaken.

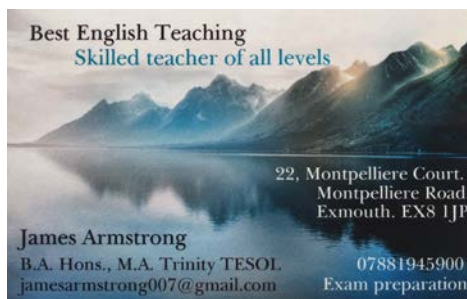
We Specialise in disabled and independent bathing and living solutions.

Wetrooms, Ramps, lifts, grab rails.

Contact Mark

01395 278647

07967 68586



Best English Teaching
Skilled teacher of all levels

22, Montpellicre Court,
Montpellicre Road,
Exmouth. EX8 1JP

James Armstrong
B.A. Hons., M.A. Trinity TESOL
jamesarmstrong007@gmail.com

07881945900
Exam preparation

FRIENDS OF GULLIFORD CEMETERY

A BIG thank you again to all who helped on the final clearing day when we hired an industrial chipper to shred the foliage previously cut down. We are now looking to form a "Friends of Gulliford Cemetery" group to support, promote & fund raise for restoration works for this historical site. If you are interested and feel you can help at any level, you will be made most welcomed. The public open meeting is at Lympstone Methodist Chapel, Tuesday 22nd May at 7.30pm.

Angela Coles

LYMPSTONE HISTORY SOCIETY

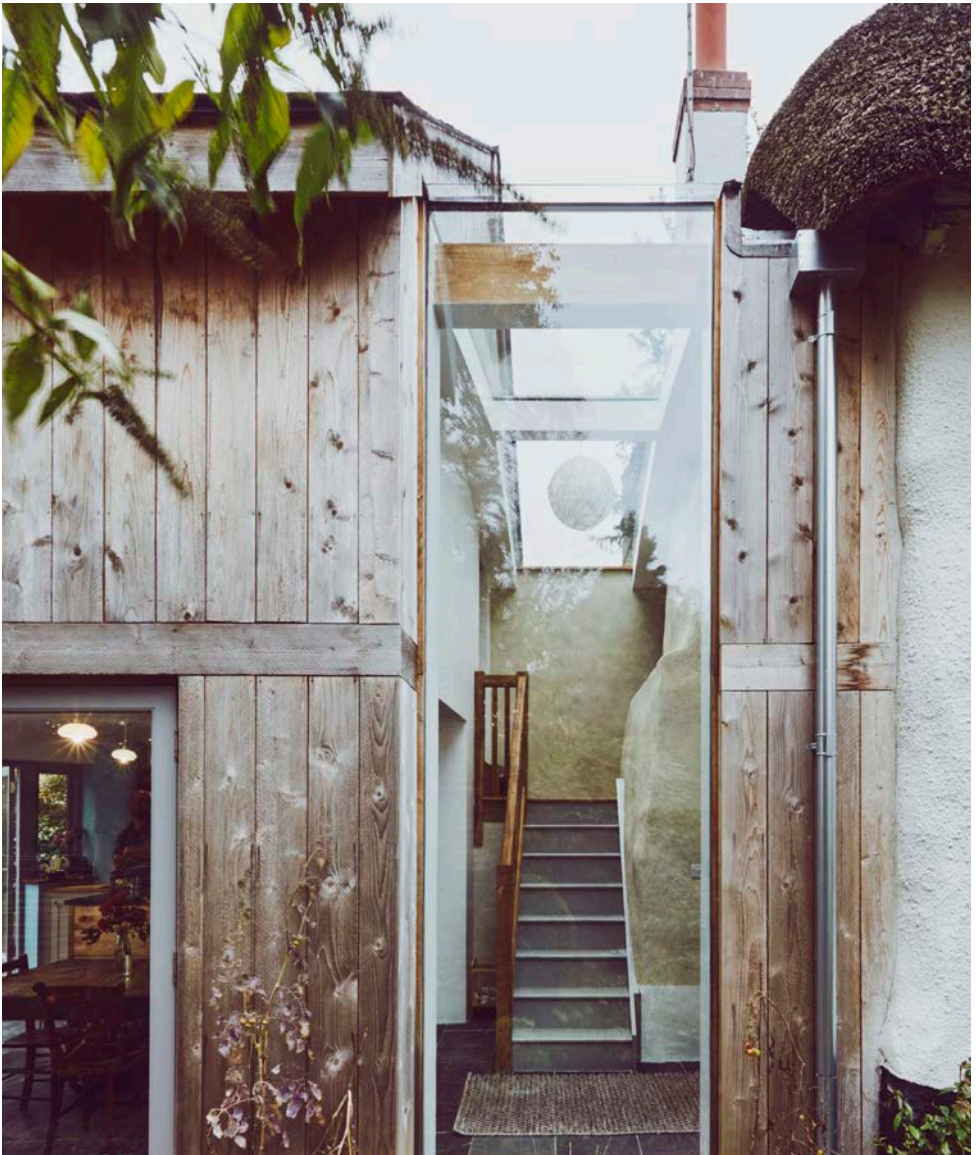
Our April talk was an informative and fascinating insight into Anglo-Saxon mints in Devon from John Allan. Our next meeting, on Thursday 24th May, begins with a brief AGM at 7pm followed by a talk from Michael Downes entitled Our Great Elizabethan, about Sir Walter Raleigh. As usual the talk will start promptly at 7.30pm in the Methodist Hall. We are always keen to welcome new members onto the committee, so do let us know if you would be interested in getting involved.

The full programme of talks for 2018 is on the village website calendar www.lympstone.org/whatson and on our notice-board under the railway arch.

Our new booklets 'Devon Boy, 1590'; 'Cooking and eating in a Devon Village: A Historical Scrapbook'; and 'A Sketchbook of Lympstone' can be purchased at our events, or from our treasurer Graham Banks (Clays, The Strand), or via email: lympstonehistorysociety@gmail.com

Mary Turner

Secretary, Lympstone History Society.



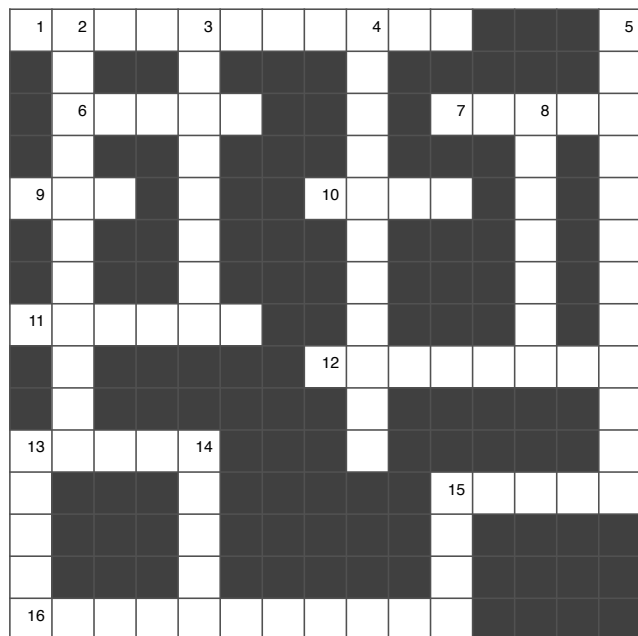
Hilton Barnfield Architects

EXETER LIVING AWARDS 2017: **CREATIVE WINNER**

"A small, independent practice with national recognition."

www.hiltonbarnfield.co.uk • 01395 224 829

THE LYPMPSTONE CROSSWORD



ACROSS

1. Heavy music loving crustation of the B52s (4,7)
6. Pushover conceals cause (5)
7. About near a stadium (5)
- 10, 9 & 13. The Specials have a view on age (4,3,5)
11. Sailed badly revealing dreams of a perfect world (6)
12. Edge land in disarray for Viking tax (8)
15. Leapt about for term of endearment (5)
- 16 & 2. DOWN The Clash's indecision on leaving (6,1,4,2,6,1,2)

LAST MONTH'S ANSWERS are available from James in the Redwing or by request from the editors at theherald@lympstone.org

Correct answers received last month from: Tor Laney-Hubbard, Frances and Laurence Pearce, Margaret Turgoose, Sally, Alan and Leonie Burton

DOWN

2. See 16 ACROSS
- 3 & 4. Zero score at tennis will rip us assunder say Joy Division (4,4,4,2,5)
5. Noel Edmunds in bargaining mood on the telly (4,2,2,4)
8. Bible letter? (7)
13. Pulls sharply from the USA (5)
14. Sounds like a cruel way to make soup (5)
15. Children do this production (4)

Jane Lees and Crew and Dave Mountain. The winner of the £25 voucher for the Redwing this month was Shirley and Simon Friend.

Please do visit the Redwing to try to tease some clues from James for this month's prize!

CALL FOR LAST MONTH'S WINNERS:

Shirley and Simon Friend, please visit the Redwing or email theherald@lympstone.org to collect your £25 voucher for last month.

LYMPSTONE LIVES - MICK CORNISH



Mick Cornish and his wife Gill have been married for 57 years and have lived every one of them in Lymington. They were both born in the village, and even during his years in the RAF Mick was able to spend at least some time in Lymington, the one exception being in 1958. They have two children, six grandchildren and two great grandchildren. Now approaching his eightieth year, Mick is often seen out and about in the village; he takes an active interest in everything around him, and is always happy to share his wonderful historical knowledge of the village and its residents.

‘I was born on 26 May 1938 in our house, 2 Harefield Cottages, the youngest of three brothers and two sisters. Sadly I never really knew my father who was killed in action at the start of the Second World War. It must have been difficult for my mother to be left with six children, but we managed and I don’t remember ever wanting for anything. I went to Lymington Primary School and then the Exmouth Boys School in 1949. Lymington was very different in those days; it seemed a lot busier, filled with shops, banks, a chemist, Charlie Venus the barber, an ironmonger, a fish and chip shop and even an undertaker with a mortuary on the premises. Hodge’s the bakery was one of my favourites, where you could buy four delicious buns for a penny. There was a coal yard, Foxwell, at Longmeadow Rd that had coal delivered to the railway station siding for the steam trains; I remember the station had a proper ticket office and waiting room with a coal fire. There were hardly any cars in the village then, just the doctor’s and Walter Webb who kept his lorry where the sailing club is now.



*Lymington Train Station
in some of its former
glory.*

As a boy I was always on the go; I learned to row a boat when I was ten, built rafts, walked in the brook, and was always on the lookout for valuable bits and pieces on the foreshore. I'd collect bits of lead and copper wire on the beach, and then swap them for a few fishing hooks from one of the shopkeepers, 'Doggy' Shears as he was known. I suppose I grew up being a hunter-gatherer; I'd row out to the 'Lymptone lake' in the estuary on my own, drop an anchor, and have five or six lines down at once to catch flounders. I caught a silver eel once, and sold it for the princely sum of two shillings. My fishing grew into a part time job; I had my own little salmon boat for about ten years; the biggest salmon I caught was 26 and a half pounds. I'd sell my catch to the local fish merchant. I sometimes used to shoot the rats with my air gun for Harry Prings at his piggery.

I left school at 15, started a plumbing apprenticeship and then did my National Service for two years with the RAF. For most of that time I was based in Yemen. When I came back I finished my apprenticeship and eventually started my own plumbing business, which I kept on until I retired. I've enjoyed being involved in village life; I was part of the scout group for many years, and led the Beating of the Bounds walk for nearly twenty years. I was one of the

first of the 'Twinnings' and was there at the signing of the Charter at Bieville Beuville in France in 1979; we've had lots of our French friends staying with us over the years. I still enjoy going to France, particularly to the Onion Festival weekend at Roscoff. I've been an allotment holder in the village for about fifty years.

The three biggest influences in my life were my mother, who really made me what I am today, National Service, a real eye opener for me at the time, and the Fifties, a time when there were jobs for all and it was a more peaceful world.



Giles Wood Property Maintenance

Painting & Decorating
Handyman Service
Plastering & Drywall
Carpentry
Tiling
Flooring

Giles Wood
T - 07880717869 E - gileswood@gmail.com
Free Quotes
References available | No Job Too Small
Professional Service | Friendly & Reliable

LYMPSTONE ART GROUP

This picture on our posters and below has been donated as the raffle prize by Paul Barclay who will be opening and judging the exhibition. Paul grew up in Lymptone , his mother, Susy ran a delicatessen shop in Dingles on Church Road and many residents will remember them both . Paul is now an Artist and Illustrator for Crew Clothing , super yachts, and for other prestigious merchandise and has a gallery in Dartmouth. We are delighted that he is our judge this year. Lymptone Artist and Art Teacher, Louise Banks has donated one of her water colours (see front cover) for our secret auction - her water colours are in great demand. She has been the winner of the Exhibition over several years and takes a key role in organising the Exhibition display.



The exhibition is held over the half term week, 27th May to 3rd June and we will have a wide range of paintings, as well as sculpture, ceramics and other 3D art on show and for sale. Open from 11pm to 5pm in the Village Hall, although on the final day, Sunday 3rd June we

finish at 2pm. Tea, coffee ,cakes and soft drinks are available.

Entry £1, free for children under 12

Judith Carter

DEVON HOME LIBRARY SERVICE

Do you love reading, but find yourself unable to get out to the Library in Exmouth?

Would you like books or audio books of your choice to be brought to your home?

If so, the Devon Home Library Service (which is completely free of charge) is what you need.

A local volunteer will talk to you about what you like to read or listen to, then seek out the right books at the Library and bring them to you.

If you would like to take part, or for more information, contact the Service Manager on 07786 635163 or email CornwallDevonHub@royalvoluntaryservice.org.uk

Sally Burton

HOUSE-MARTINS IN LYPMPSTONE

Last year, as in previous years, the nests of House-Martins have been destroyed in Lymptone.

This is a criminal offence punishable by fines of up to £5,000 and/or 6 months in prison - quite apart from the sheer cruelty.

To report such an offence the number to ring is 101 and ask for the Wildlife Crime Officer. Thank you.

A Concerned RSPB Member

A TOWERING TALK

If you stand on the shingle at Lympstone,
Looking West to the opposite shore,
By bright morning light you'll be struck
by the sight
Of three towers – no, look again – four!

But when Harland Walshaw stands on
the shingle he sees no less than SIX
towers, and he is giving an illustrated
talk about them in the Village Hall on
Friday 18th May at 7.30pm.

He will talk not only about the towers,
but about the people and events
involved with them. Do you know of
the Battle of Lympstone, and how
many died? Or why the daughter of
Edward I lies in Powderham church?
Who was the murderous Earl of Devon,
and what was his fate? Have you ever
seen a statue by E. B. Stephens (you
almost certainly have), or a watercolour
by the Reverend Swete, who visited
Lympstone in the 1790s? Who was it
changed his name from Tripe in order to
inherit a fortune? Why did the Reverend
Palk hero-worship someone with the
bizarre Christian name of Stringer,
and how did he celebrate him? What
does Brunel's tower at Starcross have
in common with the leaning tower of
Pisa? And why does Mary Jane Peters
deserve a tower to commemorate her?

If you pay your £3 entry fee, you will not
only find the answers to these mind-

blowing questions, you will also help
to keep Lympstone Church's 600-year-
old tower standing for a few centuries
longer.

Clive Wilson

PEDALLING FOR PENNIES

Lympstone School PTFA are fundraising
for a new Trim Trail for the school.

Dylan, Rimmi and Reuben helped by
“pedalling for pennies” around the
Exe Estuary. They calculated that they
needed 30,000 turns of the pedals to
get them all the way round. Their aim
was to raise a penny for every push of
the pedals, with a target of £300 for the
Trim Trail.

Bolstered by the sales of cookies and
cakes at the Turf Locks on route the
enterprising pupils eclipsed their goal
raising a grand total of £580 for the new
play equipment.

The boys are more than happy to
discuss the impact of gear ratios,
freewheeling, and how they accounted
for crank rotation in their 30,000 pedal
push estimate. Or you could add to their
total at [https://www.gofundme.com/
pedalling-for-pennies-lympstone](https://www.gofundme.com/pedalling-for-pennies-lympstone)

Well done to everyone involved!

Dave Mountain

Rated

4.7^{/5}



on feefo, the industry's independent customer feedback forum
www.feefo.com/en-GB/reviews/wilkinson-grant-company



‘A wonderful job’

I rate this company as excellent. They kept you informed every step of the sale and answered any queries with professionalism. I would definitely use them again and thank all the team for their quality service. Mr & Mrs J E, Topsham

Find out why so many of our Topsham and East Devon clients rate us so highly for customer experience

Call us now on 01392 875000



wilkinsongrant.co.uk

SALES ACQUISITIONS LETTINGS & PROPERTY MANAGEMENT
LAND & DEVELOPMENT NEW HOMES AUCTIONS MORTGAGES SURVEYS

LYMPSTONE WI

Meeting 2nd May 2018

Visitors were welcomed, a programme for the coming year and a members list circulated.

Our local crime fiction writer from Exmouth, Graham Hurley, gave us a brief biography of his life and career, starting with youthful fantasies, through Cambridge as an under-graduate and on to a position as a documentary script writer, researcher and director for television; he was involved with the TV series covering the search for the Titanic. After 20 years in TV and some writing experience, Graham turned his attention to crime stories set in Portsmouth and the Exmouth area ('The Order of Things' is based in Lymptstone); he has familiarised himself with the local constabularies for his research. The writing continues making good use of modern technology, a great tool for investigation and marketing.

Diana De La Rue gave an account of the Spring Council Meeting held at the Riviera Centre, Torquay. The speakers included Lady Arran who spoke on the Devon Lord Lieutenancy and the inspirational Martine Wright MBE, a survivor of the 07/ 07 terrorist attack in London, paralympian, mentor and charity worker.

Members had attended an Estuary

Group Meeting, Gardening Day and an ACWW Charity Walk from Exeter to Double Locks.

Committee Matters

The resolution chosen nationally to go forward to the National Federation Annual Meeting in June is: Mental Health matters as much as physical health. The NFWI urges all WI members to recognise the importance of parity between mental health and physical health, and take action to make it as acceptable to talk about mental health issues as physical health issues, and to lobby government for better support for mental illness.

Future Events

10th July Summer Supper - Sailing Club
4th August The Furry Dance, we will provide tea coffee and cakes. Details to follow.

Anyone who may be interested in Lymptstone WI will always be welcomed. For more information find us on the village website or come along to one of our meetings on the first Wednesday of the month at the Methodist Hall.

Next Meeting 6th June My VSO Challenge by Lucia Ellis a Lymptstone student.

Terri Scott

houseit
your key to secure storage

01395
239 400

self storage made easy

Woodbury Business Park • Woodbury • Nr Exeter • www.house-it.co.uk

PETER J ACCA
Property Maintenance
PVCU WINDOW REPAIR SPECIALIST
Replacement Double Glazed Units

theaccas@yahoo.co.uk
07801365097
01395489791
53 Evergreen Close
Exmouth EX8 4RR

COMPUTER REPAIRS

**ELECTRO
COMPUTERS**

NO FIX - NO FEE



01395 548151 / 07944 051987

EAST DEVON PRESSURE WASHING

Fully Insured
FREE Quotations

Mob: 07815 514997
email: edpw@gmail.com

**Drives
Patios
Decking
Paths
Steps**

The Little Plumbing Company

LP Co.
The Little Plumbing Company

Fully Qualified & Insured Plumbers
NO Callout Charges & Free Estimates
See our reviews on 'Our Local Expert'
www.thelittleplumbingcompany.co.uk

01395 741962

Water Safe
QUALITY ASSURED

gas safe
REGISTER

East Devon
water softeners

PAINTER & DECORATOR

Free Advice & Quotes



**Specialising in superior high quality
Interior painting and decorating**

Reliable & trustworthy

No job too small

Peter J Bond

Mobile: 0797 100 6957

Office: 01395 265202

Email: bondpeterjohn@hotmail.com

CHRISTIAN AID WEEK

May 13 — 19 is Christian Aid Week when across the country volunteers carry out door to door collections raising over £10m last year. We will be doing so again this year in Lymptstone so if an envelope comes through your door inviting you to donate, please do not just chuck it away with other unsolicited mail but think what you can give - every gift, large or small will help. Last year our community raised over £1300 so it all adds up! Even more if you Gift Aid your contribution by completing the information requested. A collector should call for your envelope a few days after it's been delivered. Not every house in the village is covered but if you wish to donate you can do this on line at caweek.org or by phoning 08080 006 006.

Christian Aid is the official relief and development charity acting for 41 church organisations in the UK. It has over 70 years experience in working with partners on the ground across the world to relieve poverty and tackle its root causes, regardless of religion or race. It responds to refugee and other humanitarian crises as well as funding longer term projects.

Clive Wilson

FRIENDS OF THE CHURCH

Thank you to all who have bought tickets for the Friends of the Church Lottery which has raised over £1900. Our first of the 12 monthly winners of the £25 prize is Christina Dickinson in the 2018/19 round.

Clive Wilson

SMALL ADS

HEALING & FLOWER ESSENCE

THERAPY - Natural ways to maintain a sense of well-being. Appointments, more info Tel. Karen - 01395 269323

BUSINESS BOOKS UPDATED:

Chartered accountant can provide financial budgeting and forecasting, cash flows, monthly reporting, annual accounts. Over 30 years experience. Call Howard on 07902 384288.

EVERYONE'S YOGA

New Class for all levels.

6 - 7.30pm Tuesdays. Pilgrim Hall, Glenorchy Church, Exeter Rd, Exmouth. Enjoy practising yoga in an encouraging, non-competitive atmosphere.

Tel. James Armstrong - 078819645900 for details or to book.
07967 685869



**GARDEN WASTE
GIVING YOU HASSLE?
NO MORE TRIPS TO THE TIP**

07970 806 228

1 X LARGE BULK BAG
COLLECTED AND
PROCESSED FROM **£27.50**

SPECIAL OFFER - 2 BAGS FOR £50

www.bigbagrecycling.co.uk

LYMPSTONE HERALD ADVERTISING RATES 2017/2018

Copies of the Lymington Herald are delivered free to every household in Lymington (approx 1100) every month with further copies being sold through the village shops. Please send your enquiries to Rob and Claire Hilton, Editors, Lymington Herald, theherald@lympstone.org

Costs per issue

- £90 a page
- £45 a half page
- £22.50 a quarter page
- Lineage in the Small Adverts cost 60p a line or £1.20 a line if boxed.
- Boxes (approximately business card size and 6 to a page) cost £15 a box.

Graphics can be included in any box.

Discounts are normally available on annual contracts.

Receipts are normally issued annually.

DISCLAIMER This news letter is compiled from emails sent to the editors by numerous people and very little of the information is checked before publishing which is done in good faith. *Rob and Claire Hilton, Editors*

SMALL ADS

PAINTER/DECORATOR and general maintenance. Over 20 years experience. Call Jim on 01395 277813 / 07929606895

SIMON QUICK THE LOG MAN

For all your log, coal, kindling and gas supplies. Tel. 01395 267490

ELECTRICIAN Lymestone based, specialising in domestic work. Happy to do small jobs. Call Simon on: 07985 963075

FOOD WITH FLAIR

Excitingly different Caterers
For Every Event Large or Small.
Buffets, Lunch and Dinner Parties,
Canapes, Main Course Casseroles,
Salads, Desserts or Individual Dishes
to suit your personal budget.
Telephone Shirley - 01395 265147
Email shirley@foodwithflair.co.uk

FRENCH HOLIDAY LET

Vendee: overlooking golf course and only 10 mins drive from superb beach. 3 bedrooms, 2 bathrooms, communal swimming pool and tennis courts. From just £350 per week. Tel 01395 272032 or email: annhurley1@sky.com

PRISTINE CLEAN

Domestic ironing and cleaning services. Local lady.
Call Niki - 01395 740727

ROOFER specialising in pitch roofs and flat roofs, fascias and guttering, general maintenance, pest control, repairs, fully insured. Please call for a free quote. 01395 277236 07528 970950. liam@liamandemma.com

SWEDISH MASSAGE

Calm Swedish massage and holistic therapy, Japanes rejuvenating face massage. Lovely beauty room, parking, appointments available 07958599387

TOENAIL CUTTING and treatment of common foot health ailments, diabetic foot checks and advice, plus toenail reconstruction. Home visits. Anne Reeves (MRFHP) Foot Health Practitioner. 01395 225062 / 07515 860347

GARDEN JOBS

Jenny is still digging for Oxfam. £10/ hour, all to Oxfam. 276569
Jenny Moon

FOOT HEALTH PRACTITIONER

Lindsey Waddell MAFHP. Nail cutting, foot care, treatment of corns and callus. Home visits. 01395 263496

PROPERTY MAINTENANCE -

Carpentry, Flooring, Fencing, Gates, Decking, Bathrooms, Kitchens, General Repairs. Free advice & estimates. James Waddell 01395 263496

SMALL ADS

ACCOMMODATION

HOLIDAY COTTAGE Cosy cottage in centre of village. One double room and further room with bunks. Minimum 2 nights in low season and 4 nights in high season. Call Pete or Jan on 01395 488123

CALPE, SPAIN : 2 bedroomed apartment for rent. sleeps 4-6 people, beach front, 3 pools, 2 tennis courts. tel: Jane Moffatt 279952.

WITHALL'S HOUSE BED AND

BREAKFAST. A modern and spacious home close to the heart of the village. Ample parking and flexible accommodation. Call Pete and Jan Hardy on 01395 488123 Or visit www.lympstonebedandbreakfast.co.uk

THE OLD DAIRY B&B, LYMPTONE

A very warm welcome awaits you at The Old Dairy B&B situated on the edge of the picturesque village of Lymptone. Recently renovated, this luxury B&B offers three well appointed rooms all furnished to a high standard. Double, twin and family rooms available. Experience the ultimate in home-from-home comfort and style, complete with traditional home-cooked breakfast. Contact: Den and Jules 01395 275679, mobile 07595540562 or email info@theolddairylympstone.co.uk www.theolddairylympstone.co.uk

BYRE COTTAGE - Self-Catering Holiday Let.

Byre Cottage is a delightful two bedroom self-catering holiday let with traditional features and a lovely rustic feel in a contemporary style. Boasting two light and airy bedrooms, accommodating up to four guests, and a well-behaved dog. Contact: Den and Jules 01395 275679, mobile 07595540562 or email info@theolddairylympstone.co.uk www.theolddairylympstone.co.uk

PICTURE FRAMING. For all your framing requirements; also frame restoration & chair caning. Caro Ambridge 01392 877460, Topsham.

PIANO with a VIEW Lessons for all ages, beginners and improvers, "purely for pleasure" and ABRSM exams to Grade 8. Theory to Grade 5. Tel: Judy Joss (BA Mus, Dip Ed) on 01395 222749 or 07939 126190.

MATHS TUITION Experienced tutor available to teach primary to GCSE level maths. Reasonable rates Tel: Jane Moffatt on 279952 or 07730877889

ELECTRICIAN - Fully qualified and insured, all work guaranteed. No job too small. Phone Paul on 01395 744028 / 077400 99195

NEIGHBOURHOOD PLAN - THE NEXT STEPS!

Our neighbourhood plan contains community actions to help preserve, enhance and develop our community and the parish council provides funds to deliver these actions. The NP group dissolved after the referendum, and the time is now right to consider how the community actions within the plan can be best delivered and supported (e.g funds were used to support the mirror at Sowden End and the Queen's 90th birthday party). Jenny Clark is the NP representative on the Parish Council and Linda Lyon is the NP Champion, but both of us feel that the allocation of funds and support of community initiatives should have a larger and wider representation.

There are many future project ideas but we cannot manage to deliver them all! We propose a 'pool' of people who would be willing to coach, guide and advise others without having to do all the leg-work for an event.

A new 'Lymptone Community Hub' could support or underwrite costs involved in community activities or learning, assist in establishing new groups and strengthening others (helping community groups to raise funds for themselves). Large events could be organised by several groups working together and splitting the profits.

The Parish Council approves the idea in principle – what we now need are people who are keen to get involved. If you feel you have a few hours a year and want to help promote activities and events in the village then please contact me. We especially welcome younger people to our group (we need social media help and really want to get a music festival off the ground!)

A sample of future ideas are

1. Village Handbook.
2. Village Map under the Railway Arch
3. An annual community event for all residents
4. Arts festival.
5. Christmas lights
6. List of village resources and skills.
7. IT community workshops/training
8. Annual or biennial music festival

For more information please contact Jenny or Linda on merryfield@etcpm.com

WHAT'S ON IN LYMPSTONE

MAY

- 11 Film Society - Fly Away Home
- 12 Garden Club Coffee and Plant Sale
- 13-19 Christian Aid Week
- 14 Quiet Morning - Parish Church
- 16 Friends of Underhill Surgery AGM
- 17 Exmouth Library - Poetry Evening

- 18 A Towering Talk
 - 22 Friends of Gulliford - Open Meeting
 - 23 Station Tidying Morning
 - 24 AGM & Michael Downes Talk - WI
 - 27 Art Group Exhibition Opens
-

JUNE

- 3 Art Group Exhibition Closes
- 3 Helen Tribble Talk - Parish Church
- 4 Parish Council Meeting
- 6 WI

- 9 Sam Banks Memorial Dinner
 - 14 Annual Cricket Match
 - 24 Furry Dance Cream Teas
 - 24 Return of the Dante Quartet
-

JULY

- 1 Party on the Slipway
- 2 Parish Council Meeting
- 4 WI

- 10 WI Summer Supper
- 15 Hospiscare Open Garden Film Night

YOGA LYMPSTONE

AT LYMPSTONE VILLAGE HALL

MONDAY 7.00 - 8.00 PM
YOGA FOR STRETCHING &
STRENGTHENING
BEGINNERS WELCOME



WWW.YOGALYMPSTONE.WORDPRESS.COM
WWW.FACEBOOK.COM/YOGALYMPSTONE