

# THE LYPMPSTONE HERALD



Editors: Claire and Rob Hilton - [theherald@lympstone.org](mailto:theherald@lympstone.org) | 07739969311  
Advertising: Steve Morgan [sjmorgan222@gmail.com](mailto:sjmorgan222@gmail.com) | Copy Editor: P Acca  
Copy deadline for the next issue : Sunday 2nd December, 6pm by email  
Distribution by Robin and Judith Telfer Tel. 272275  
Cover Art : Wall Hanging by Pat Boaden  
Village website: [www.lympstone.org](http://www.lympstone.org) | [webmaster@lympstone.org](mailto:webmaster@lympstone.org)

# PARISH COUNCIL NEWS

**Public Session** – several different topics were raised from members of the public including:

- The Village Stores shop window display. A resident asked whether anything could be done to reduce the type of signage displayed. The concerns of the resident had been noted but Councillors explained they had no power to enforce internal displays that were chosen to be used on the inside of properties.
- The **Traffic lights** at the Saddlers Arms again was raised regarding the timing of lights changing and the build-up of traffic. County Councillors explained that the timings of the traffic lights had been investigated and they had not and would not be changed. County Cllr Scott added that a survey will be taking place regarding these lights and their use in due course.
- The PC were thanked for their continued support at the DMC. The resident also added his disappointment with the EDDC Officers who had seemingly let South West Water go unchallenged with their report which had been the same one submitted in June. The LFRG responded and added that they were continually working with SWW who are responding to the needs highlighted in the village and

believed the drainage systems in the village would be rectified.

- The 2014 Parish Council's Nurseries Development Site Brief. A resident enquired about this document being made public. Councillors explained that this document could be found on the Lymestone village website however, they outlined, that this brief is nothing to do with the current private development.

**Casual Vacancy** – We currently still have one Councillor vacancy. It would be great to hear from any parishioner who is passionate about Lymestone Parish. The best way to be part of the action is to become part of the Parish Council body to share your personal expertise and knowledge to get things resolved. If you think you could make a real difference, then please do get in touch with me or any of our Councillors to apply.

**Chairman's report** – Unfortunately our Chairman had sent her apologies due to illness, so the Vice Chairman outlined the events planned for the Armistice Day weekend of remembrance and timetabled events planned. A lot of hard work, dedication and preparation has been invested in ensuring events run as successfully and as smoothly as possible, especially by Linda Lyon of the Community Hub group. It will be

a busy weekend of remembrance for both young and old to participate and remember. Please support our village for these events – it is important that we all remember.

There was also a debate on allowing cars for disabled users to access and park on Avenue Field. It was decided that, weather pending, a decision would have to be made nearer or on the day if this could be possible.

**District council reports** – Cllr Longhurst explained that he was very sorry regarding the decisions made at the recent DMC did not go in our favour. However, he assured all members that SWW will be putting drainage schemes in place to prevent any discharge or backflow.

Cllr Ingham added that EDDC Officers misinterpreted the Neighbour Plan to allow planning to pass. He believed the PC would need to consider flooding in more depth at the NP review to protect the village.

**Neighbourhood Plan Review** – Cllr Longhurst reported that he had a list of keen volunteers to support and help steer the review of the NP. He is hoping to draft a broad outline of ideas with the current volunteers to move the NP forward. A village meeting will be then be held for a wider audience to add their ideas. A meeting will be publicised in due course by Cllr Longhurst.

### **Reports of Lead Councillors:**

**ESTATES** – A new lock has been put on the vehicular access gate at Candy's Field due to the constant opening of the gate and it is being left open. Certain bodies in the village will receive a key to allow monitored access in and out of the field.

It has also been brought to the PC attention that the path from Trafalgar Road to Candy's Field is becoming unsafe for pedestrians of all ages, due to the increasing use of children on scooters and adults on cycles speeding down the path into the field. A request has been made that the gate at the field entrance is made self-closing therefore everyone would need to dismount to open it. This will have an impact on all users and villagers' views are being sought before action is taken. One or two near misses have been reported!

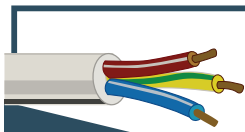
A gentle reminder that all dogs are always to be kept on leads in this field.

*Clerk to the Council:*

*Lucy Tyrrell c/o Minnows, Longmeadow Road, Lympstone EX8 5LF*


*Tel: 07890717081*

*Email: [lympstonepc@gmail.com](mailto:lympstonepc@gmail.com)*



**D.A.B  
Electrical  
Solutions**

**DARREN BOLT**  
 t: 07807698470 / 01395 743053  
 e: dabelectricalsolutions@hotmail.co.uk  
 w: www.dabelectricalsolutions.co.uk  
 a: Exmouth, Devon



10 HULHAM ROAD  
EXMOUTH DEVON

**MOBILE : 07971062837**



**DAVE MANNING BUILDER**

davemanning1098@yahoo.com

**houseit**  
your key to secure storage

**01395  
239 400**



**self storage made easy**

Woodbury Business Park • Woodbury • Nr Exeter www.house-it.co.uk

**CLOCK REPAIRS**

**Terence C. Matthews,  
Horologist**

**Tel: 01395 273563**

All clocks repaired, including  
 Westminster Chimes, Wall Clocks,  
 Grandfather & Grandmother Clocks,  
 Dial Clocks, Long Case and Carriage  
 Clocks.



Free estimates provided, with house  
visits.

## PARISH CHURCH

### Remembrance Sunday

Please note that the service will start at the earlier time of 9:45am to enable people to assemble afterwards at the war memorial for 10:50am. Refreshments afterwards will be the Village Hall where you are invited to join in the celebration of the 100th anniversary of the ending of World War 1. The BBC coverage will be streamed at the hall at this time.

There will be flower displays in church on Saturday and Sunday. Pat Boaden's wall hanging 'Letters from Home' is displayed on the South wall in the south aisle just inside the entrance to the church.

### Apple Day

We were blessed with a beautiful warm sunny day and Lymptone's Apple Day was in full swing. John Lupton's orchard was buzzing with over 200 people.

The traditional apple press was juicing for hours with queues of people clutching bags, and a couple of wheelbarrows, of home grown apples. It has been a good season. Apple tasting was another attraction with 13 different varieties for people to try, including some from Lymptone.

The training brass band was in fine form as people sat around tables with coffee and cake, enjoying the BBQ and pasties. All delicious and sold out by the end of the day. Others were sitting on straw bales under the trees after visiting the cider tent. It was a good occasion to catch up with friends and Lymptone

news.

Some quieter moments could be spent wandering round the garden admiring the display of quilts of many colours and designs. A lot of talent hanging there on the washing lines.

It was lovely to hear so many people saying how much they had enjoyed the day. A big thank you to all those who helped to make it so. Jill Wilson and from John Lupton, the church treasurer; 'A very big thank to all who made this day such an enjoyable and relaxed occasion, as helpers or visitors.'

See You Tube 'Lympstone Apple Day 2018 for a short film of the day..

### **Dates for your Diary.**

#### **Carol Singing around the Village**

The date proposed is - Wednesday 19th December - starting from the Methodist church at 6pm with stops at the Swan Inn; corner of Trafalgar Road/Meeting Lane; Edinburgh Crescent; Glebelands/Churchill Court; Hunton Close right at the bottom; the park between Gibraltar and Trafalgar; Summer Meadow (within Jackson Meadow) and back to the Church through Candy's Field. We will finish at the Anglican Church on Church Rd where there will be real mulled wine for thirsty adults and hot chocolate for the younger ones with tea, coffee and minced pies of course!

#### **Christmas Services**

Service of Nine Lessons and Carols on Monday 17th December at 7:00pm; Christingle service on Saturday 22nd December; Midnight Mass on

Christmas Eve Monday 24th December at 11:30pm; Family Eucharist on Christmas Day at 10:00am

#### **Confirmation**

To be led by Bishop Jackie Searle, the new Bishop of Crediton, at Holy Trinity on Sunday 24th March at 3pm.

A number of candidates are already known, but I would welcome anyone who is interested to contact me – i.e. anyone who has recently come to faith, or any adults baptised but not confirmed. Preparation for confirmation will begin in the New Year James Hutchins.

#### **Meet James, our Rector, at the Swan**

In November 14th at noon, 21st at 10.30am and 28th at 2pm these are all Wednesdays.

*Brian Mather*

#### **'LETTERS FROM HOME'**

The wall hanging (cover art) was made to commemorate the centenary of the First World War 1914 -1918. The names of the fallen from that war can be found sewn on the poppies attached to the border of the hanging.

Pat Boaden designed and made the hanging with the practical help and encouragement of Gill Gray, Liz Walshaw, Hester Walshaw and John Lupton on behalf of Lympstone Parish Church. The poppies were sewn onto the hanging by members of the local community.

*Pat Boaden 2018*

Feeling confident & safer  
when driving.

ZEISS DriveSafe Lenses

**SAVE**

**30%**

**During November  
and December**



ZEISS DriveSafe Lenses

**Recommended for everyday use\***

- Reduce glare
- Enhance vision in low-light conditions
- Improve focus between road, dashboard & mirrors



\*Based on a wearer trial with 100 participants conducted by Aston University, 67% agreed or strongly agreed, they would recommend these lenses for everyday use.  
[www.zeiss.co.uk/vision](http://www.zeiss.co.uk/vision)

**Peter Tosh Opticians**  
FOCUSING ON YOU

Optometrist & Contact Lens Practitioner

**21 High Street, Topsham**

**Tel: 01392 873612**

[www.peter Toshopticians.co.uk](http://www.peter Toshopticians.co.uk)

cover) at any of our events, outside the village hall and at various other local outlets – and also online on the Garden Club page of the village website [www.lympstone.org](http://www.lympstone.org)

At each Club event we're now selling discounted advance tickets (£1 off in advance – £8) for our 9 March special event with Bob Flowerdew. Bob will be sharing his passion for 'No Work Gardening', and tickets for this are already selling – so if you're interested don't leave it too late to book. Contact Suki on 01395 269989 or email [suki.commin@googlemail.com](mailto:suki.commin@googlemail.com)

News from the Garden Club is sent out regularly by email – if we don't have your details and you'd like to be kept up to date with what's coming up then please send your name and email address to [windygardener@yahoo.co.uk](mailto:windygardener@yahoo.co.uk)

*Gail McKenzie*

## LYMPSTONE GARDEN CLUB

On Tuesday 20 November, our short AGM will be followed by a talk on camellias by Jeremy Wilson of Strete Gate Camellias. We'll be in the Village Hall Function Room at 7.30pm. Entry is £3 (no membership fee) on the door.

Strete Gate Camellias is a family-run nursery based in south Devon. It has been in business since the mid 1980s and grows more than 300 varieties of camellias. Camellias make a fantastic addition to any garden – they are evergreen shrubs of many sizes, with rich glossy leaves and bright and beautiful flowers. Plants will be on sale. Do pick up our new events leaflet for 2018-19 (with Bob Flowerdew on the

## NURSERY SITE NEIGHBOURHOOD PLAN DEVELOPMENT BRIEF

As part of the Neighbourhood Plan the Parish Council commissioned a Development Brief in 2014 for the Nursery site. Although this was not ultimately adopted by the Parish Council, the Brief has been made available on the Parish Council website for any one to download if they are interested. The link to the document can be found on the PC website under: Parish Council > Planning Applications > Nurseries Site Documents.

*Nick Harries*



## **APPLE DAY - APPLE TASTING RESULTS**

We had thirteen varieties to taste including many older varieties. We had 108 votes and the outright winner was Ashmead's Kernel with 36 votes. It's a very old apple variety with a drab appearance (it's a russet) but it has a unique pear-drop flavour. In second place with 15 votes was Ribston Pippin, another old variety, which has exceptional flavour.

The results in full:

1 Ashmead's Kernel 36

2 Ribston Pippin 15

3 Newton Wonder 12

4 Fiesta 10

5 Cornish Aromatic 9

6 = Chiver's Delight 8

6 = William Crump 8

6 = Brownlees Russet 8

Adam's Pearmain scored 4 and Kingston Black, Grandpa Ailes and Sweet Cleave scored 2 each and Don's Delight 1

It was great fun.

Many thanks to Kevin Croucher of Thornhayes Nursery, Cullompton for providing the older varieties and Jill Wilson for 3 varieties from her own garden.

*Suki Commin*

## **FRIENDS OF THE CHURCH**

The £25 winner of the October Lottery draw is Anne Billington.

Thank you to all who came along to Graeme Wheeler's talk on 2 November,

'From Amiens to the Armistice - 100 days to win the war.' Huge thanks also to Graeme who managed both to inform and entertain an audience of over 70 so well. The Friends will share the proceeds of the evening with the Royal British Legion Poppy Appeal.

*Clive Wilson*

## **CONCERT WEDNESDAY 21st NOVEMBER**

At the invitation of the Friends, on Wednesday 21 November the musical talents of the children of Lymptone Primary School and St Peter's Preparatory School will be both seen and heard in Lymptone Church. We are very grateful to the children and their teachers for the work they have put into this event in a busy school term. Proceeds will go to the Friends of the Church to support their work in helping to maintain the church building. Starts at 6.30pm. Admission £3, children free. Please come along to enjoy it!

*Clive Wilson*

## **ART & CRAFT CHRISTMAS SALE**

Saturday 17th November, 9.00am - 3.00pm at the Methodist Chapel, once again sees our annual Christmas art & craft sale. Gathering together some of our talented local artists whether they work in wood, paints or beads, the items are of a high standard, ideal pieces for gifts for Christmas or to treat yourselves. Free admission.

*Angela Coles*

## SCHOLARSHIP SUCCESS FOR ST. PETERS YEAR 8s

77% of pupils in Year 8 at St Peter's Preparatory School in Lympstone last year were successful in being awarded scholarships to their senior school of choice. For the last 5 years, the percentage of Year 8 leavers who have been offered scholarships has been steadily rising. 56% of the 2013-2014 cohort of Year 8s achieved scholarships and that figure now stands at 77% - an all-time high.

Although most children remain at St Peter's Preparatory School until the end of Year 8, a small proportion move on at the end of Year 6 and the most popular destination for St Peter's Year

6 pupils in the last 3 years has been Colyton Grammar School. One of last year's Year 6 pupils was successful in securing an A list place to Eton in 2020.

St Peter's is holding a School in action morning from 10:00 until 12:00 on Wednesday 14 November 2018 where prospective parents are given a tour of the School and Nursery by Year 8 pupils and a chance to chat to staff.

To book onto St Peter's School in Action morning, please telephone Rachel Elliott on 01395 280335 or email [rachel.elliott@stpetersprepschool.co.uk](mailto:rachel.elliott@stpetersprepschool.co.uk)



The poster features a dark background with a subtle pattern of circles and stars. At the top left is the school's crest, a shield with three keys. To its right is the text 'ST PETER'S PREPARATORY SCHOOL'. On the top right is a circular logo with a tree and the text 'ST PETER'S PREP SCHOOL PTA GROWING TOGETHER'. The main title 'Christmas Fayre' is written in a large, elegant, white script font. Below the title, the text 'Everyone is welcome to come and enjoy some festive hospitality whilst browsing the wares of numerous independent stallholders.' is displayed. Further down, it says 'Also: Hot Food, Refreshments, Activities for the whole family with Christmas Tunes by Lympstone Training Band'. At the bottom, the event details 'Saturday 1 December 2018 • 1pm 'til 4pm • Free Entry' are listed in a bold, white sans-serif font.

**ST PETER'S**  
PREPARATORY SCHOOL

**Christmas Fayre**

Everyone is welcome to come and enjoy some festive hospitality whilst browsing the wares of numerous independent stallholders.

Also: Hot Food, Refreshments, Activities for the whole family with Christmas Tunes by Lympstone Training Band

**Saturday 1 December 2018 • 1pm 'til 4pm • Free Entry**



## SUSANNAH'S TEA ROOM, LYMPSTONE VILLAGE

Lympstone's one and only tea room was taken over by Susannah Quick at the beginning of August, and the first day of trading happened to be the Furry Dance Day, the busiest day of the year! The tea room is open every day from 9 to 5 until 4th Nov. Winter opening times are Wednesday to Sunday 10 to 4, reverting back to 7-day opening in the Spring.

Susannah has been in catering all her adult life, having worked at Budleigh Salterton Hospital as Head Chef, Killerton House, an Exmouth primary school, a couple of hotels in Exeter and Ottery St Mary, care homes in Exmouth and Budleigh Salterton, and a small bistro at a local campsite. Her claim to fame is that she cooked at Langans' Brasserie, Michael Caine's restaurant - the actor, not the chef!

Susannah's quiet lifelong ambition has been to run her own business, and the opportunity arose to take on the tea room after Oh Sew Devon came on the market. She had long envied its perfect location, right by the station, cycle path and estuary, and had often said to friends "If that place ever comes on the market...!"

It's a family affair – daughter Katie, a trainee accountant, runs the finances, her partner Ben works in the tea room

with Susannah, and photographer son Chris handles the marketing. Susannah has already changed the interior, putting in place rustic wooden tables which seat up to 25 people to enhance the feeling of warmth.

Susannah offers a wide range of delicious home-made soups, cakes and sandwiches, together with hot chocolate, cream teas, milkshakes and Salcombe Dairy ice cream. She wants to attract local Lympstone residents, including groups and societies who may need a venue for their meetings, and passing walkers and cyclists. The tea room is both dog and child friendly.

The Quicks have been overwhelmed by how warm, friendly and welcoming the villagers have been since opening.

Susannah says: "If you haven't yet visited, why not pop down and say Hello!"

Facebook: [fb.me/susannahs.tearoom](https://fb.me/susannahs.tearoom)  
e: [susannahs.tearoom@gmail.com](mailto:susannahs.tearoom@gmail.com)  
m: 07933 095534  
l: 01395 487220

---

## Local Lamb and Hogget

*We have a limited amount of lamb and hogget for sale from our own flock which we keep outdoors on permanent pasture all year round. Raised in Lympstone and butchered in Ottery for the fewest food miles. We sell our spring-born lamb at 8-12 months and hogget at 20-24 months.*

Half a lamb (approx. 12kg) or hogget (approx. 15kg)  
(leg, shoulder, chops, breast, stewing) - £7.00 per kg  
Leg (approx. 2.5kg) whole or half - £8.00 per kg  
Shoulder (approx. 2.5kg) whole or half - £6.00 per kg

Sheep skins from £45.



For more information or to place an order  
email [karen@ballandkin.me.uk](mailto:karen@ballandkin.me.uk)

Edward and Karen Ball  
Lower Coombe Farm

## **LOCAL FREE-RANGE OVEN-READY CHRISTMAS TURKEYS**

**2 traditional breeds to  
choose between to suit  
your celebration**

Free delivery made by the farmer  
who reared them.

For more information contact Ben

07986175612

[info@partridgehill.co.uk](mailto:info@partridgehill.co.uk)

[www.partridgehill.co.uk](http://www.partridgehill.co.uk)



**PARTRIDGE HILL FARM**

## **EXMOUTH & LYMPSTONE HOSPISCARE - OUR CHRISTMAS EVENTS**

### **'Christmas Hamper Campaign'**

December, 2018

Take part in our Christmas Hamper Campaign in December..... Request your Christmas Hamper Pack, Find a suitable box, or get one from us, Fill it with goodies, then raffle it off!

### **'Light up a Life', Holy Trinity Church, Exmouth**

Wednesday 5th December, 6pm

Join our community service to remember someone special this Christmas.

### **'Christmas Fayre', The Strand, Exmouth Saturday 8th December, 10am to 3pm**

We will be having a Christmas stall on the day to include a fantastic Tombola, Christmas Games, Cards & Gifts.

### **'Christmas Concert', Holy Trinity Church, Exmouth**

Monday 10th December, 7pm

Featuring the St David's Singers & The Beacon C of E Primary School Choir - For tickets please contact us on 01395 279113 or call into Central Stores (From 15th November)

### **'Big Christmas Quiz', The Point, Exmouth**

Thursday 27th December, 8pm

A special post Christmas edition of The Point's weekly quiz all in aid of Exmouth

& Lympstone Hospiscare with prizes galore, a grand raffle and guest cheese round.

For any further information on any of the above events please contact Lucy E: [l.hancock@hospiscare.co.uk](mailto:l.hancock@hospiscare.co.uk) or T: 01395 279113

*Lucy Hancock*

## **PREPARING FOR THE 2019 VILLAGE CONCERT**

It may seem early to be thinking about the 2019 annual Village Concert, but with the crucial date being Saturday 2nd February, it is indeed time to make sure you hold that date in your diary.

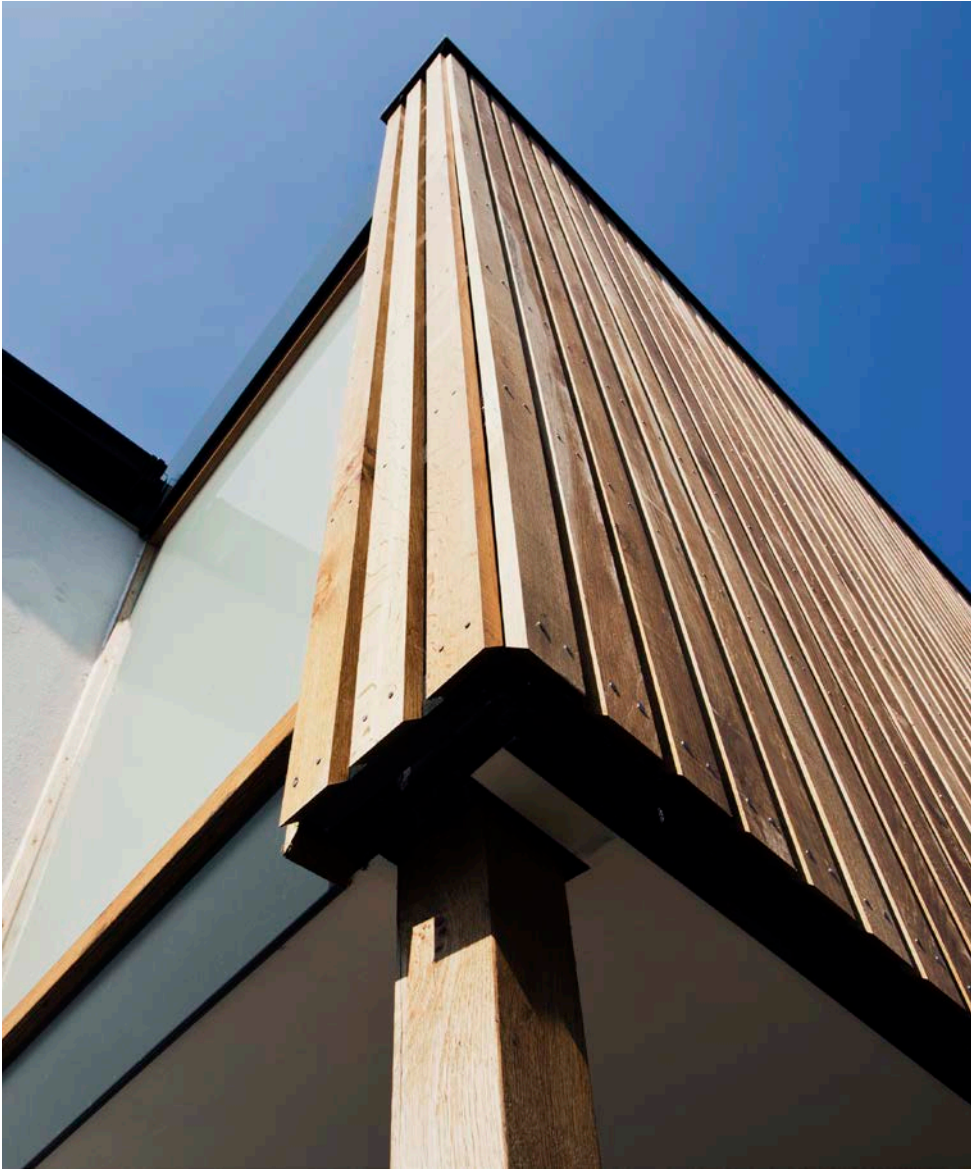
Lympstone Entertainments are always on the lookout for new acts to take part in this showcase of Lympstone talent so, if you are able to entertain an enthusiastic audience for just a few minutes, we'd love to hear from you so don't hesitate to get in touch with Sheila Stone (274356 or [sheilastone@hotmail.com](mailto:sheilastone@hotmail.com)) or Viv Day (268653 or [viv.day@hotmail.co.uk](mailto:viv.day@hotmail.co.uk)).

Don't be shy! This is a wonderful opportunity to be part of one of Lympstone's most popular events.

For those just wanting to secure tickets, full details will be in December's Herald.

*Viv Day*

*Lympstone Entertainments*



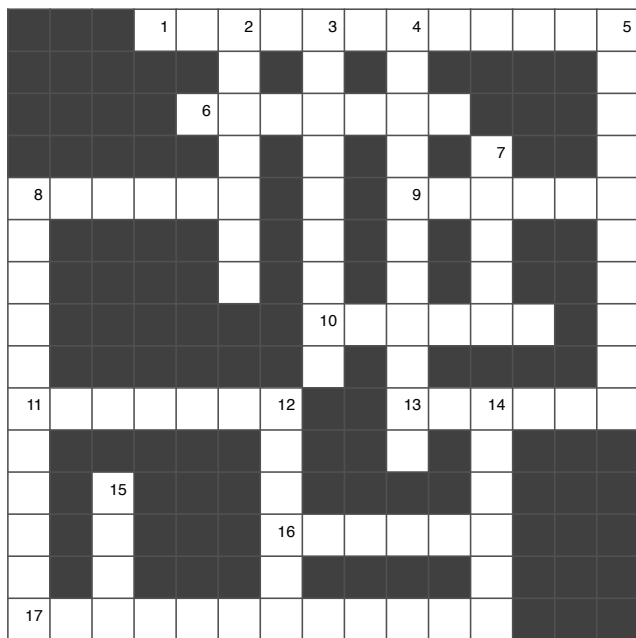
# Hilton Barnfield Architects

EXETER LIVING AWARDS 2017: **CREATIVE WINNER**

*"A small, independent practice with national recognition."*

[www.hiltonbarnfield.co.uk](http://www.hiltonbarnfield.co.uk) • 01395 224 829

# THE LYPMPSTONE CROSSWORD



## CLUES

### ACROSS:

1. Haughty nature - extremely foolish are we, it is said (12)
6. I barged clumsily into group of soldiers (7)
8. Foolish talk and endless awe make one belly laugh (6)
9. Seller of goods and food sounds more disgusting (6)
10. Ascend and alter direction for positive trend change (6)
11. Expresses disapproval of things (7)
- 13 Paths of planets hold the eyes ? (6)
16. Obtained pig product and and whereabouts of The Penguin (6)
17. The result of 8 Down (12)

### DOWN:

2. Hairpiece to judge? (7)
- 3 & 4. Mixed up dingo or I unhesitating means affront at injustice (9,11)
5. "Alright" band snitch to police and do it very well? (10)
7. Definitely a sound way to spot a sub! (5)
8. Revolutionary method of execution? (11)
12. Small peg to pigs gone mad (6)
14. In Zanzibar manacled man serves drink (6)
15. If this jockey rode, they'd break a record 4)

**LAST MONTH'S ANSWERS** are available from James in the Redwing or by request from the editors at [theherald@lympstone.org](mailto:theherald@lympstone.org)

**Correct answers received in October from:** Frances & Laurence Pearce, Dave Mountain, John Brewer, Becky Smith & Nigel Passmore,

The Burtons, Jane & Dave Lees and Tina Bissett. The winners of the £25 voucher for the Redwing in October were Becky Smith & Nigel Passmore. Please do visit the Redwing to try to tease some clues from James for this month's prize!

# LYMPSTONE LIVES - ROGER RIGGS



Roger was born in Exeter and lived in Pinhoe from the age of 7. He is the second eldest of 6 boys who came from a well known butchering family. Roger attended Pinhoe Primary School and then went on to Broadclyst Secondary Modern School (now known as Clyst Vale Community College). In his first year at secondary school he joined the school band, learning to play the French Horn and then moved on to Euphonium in his later years at the school. At the age of 12, Roger took piano lessons but regretfully did not keep it up.

Roger left school and joined his families butchery business and went into partnership with his eldest brother and dad. In 1983 he sold the business and joined Interlink Express Couriers as a driver and after 14 years progressed to a supervisory role. In 1994 Roger married Lisa and they are proud to have two lovely children Siobhan and Gareth. In 1997 Lisa and Roger bought into the franchisee business of Interlink in Barnstaple. Roger is now with DPD, the company which bought out interlink, so has completed 35 years in the parcel courier business.

Roger has been playing in Brass Bands now for 46 years and has been a member and more recently associated with the Lympstone Band (now known as SW Comms Band ) for 42 years. Most of you will know Roger as the conductor of the Lympstone Training Band. He is proud to have had the good fortune of being able to be such a pro-active member of our wonderful community and to have made many Lympstonian friends along the way.

## **How did you come to live in Lympstone?**

In 1976 I joined the Lympstone Band (Now known as S W COMMS Band) having previously started my banding life with the Exeter British Rail Band in 1972. I got to know the Bound family when Richard and his two daughters, Lisa and Sarah, joined some years after. In 1994 I married Lisa and we bought our house in Church Path.

## **What do you consider your greatest achievement?**

This is a good question. Whilst living in Lympstone I feel I have more than one



great achievement, but the greatest has to be seeing our two children Siobhan and Gareth grow up to be the well mannered, kind and respected adults they are.

### **What is the best thing about living in the village?**

There are a few best things about living in Lymptstone. The peacefulness of being away from the hustle and bustle of the outside world just minutes up the road. The panoramic views of our beautiful estuary, which you can see from walking the numerous footpaths around the village. The people around who will always acknowledge you even if they don't know you. The vast number of organisations and events within our community. I could go on and on!

### **What three things have made you who you are?**

I think the three things that have made me what I am are, firstly, having the knowledge and patience to bring a group of musicians of all ages from 8 players to 40 strong in the Training Band. Secondly, having previously run the Furry Dance with Lisa for 9 yrs, and currently still helping to organise the event, now in my 42nd year, has helped me recognise what village life is all about. Lastly, being part of our close family has helped me understand life from a different prospective.

## **Aerial Services** **(Mike Cummings)**

- Same Day Service Available
- 7 Days A Week
- Sales, Service, Installation
- Repairs & Reception Problems
- Digital Aerial Upgrades

**01392 279513**  
**07836 641635**

[www.aerial-services-mikecummings.co.uk](http://www.aerial-services-mikecummings.co.uk)

**NO CALL OUT CHARGE—FREE ESTIMATES**



### **Giles Wood Property Maintenance**

**Painting & Decorating**  
**Handyman Service**  
**Plastering & Drywall**  
**Carpentry**  
**Tiling**  
**Flooring**

**Giles Wood**

**T - 07880717869 E - [gileswood@gmail.com](mailto:gileswood@gmail.com)**

**Free Quotes**

**References available | No Job Too Small**  
**Professional Service | Friendly & Reliable**

## FURRY DANCE CHRISTMAS EVENT

### Santa and Mulled Wine : Sat Dec 8th

Plans are well underway for this year's event. If you haven't joined in with these festivities before, this is the year to come along. The Village Hall is our new venue, which will offer more room inside and plenty of parking outside. The band will use the stage enabling Roger Riggs to bring the full Training Band and provide a wider programme, which is a real bonus. There will be ample space for more tables and chairs to accommodate those who like to sit and listen whilst enjoying their refreshments with friends.

Santa is looking forward to driving through the village, so give him a wave as he passes in his chauffeur driven car. His route will take him down Sowden

Hill, along the Strand, into Church Road and up School Hill for arrival at the Hall at 10:30am. The band will welcome him and magical Christmas snow will fall on all around.

We look forward to a festive atmosphere with our usual old favourites, Santa's grotto, Christmas draw, tombola, mulled wine/coffee and mince pies plus an extra surprise or two.

All Welcome:

- 10:15 to 12:30 ( Santa arrives 10:30 )
- Entry £3.00 per adult, to include mulled wine or coffee and a mince pie.
- Children have free entry plus juice and a biscuit but a visit to Santa's grotto and small gift is £1.00.

Look out for the posters, hope to see you there.

*Chris Doak*

**travel** counsellors



Adrian Walters, Travel Counsellor

**Your personal Travel Expert**

01395 350017 or 07866 716478

[adrian.walters@travelcounsellors.com](mailto:adrian.walters@travelcounsellors.com)

[www.travelcounsellors.com/adrian.walters](http://www.travelcounsellors.com/adrian.walters)

*With us...it's personal*



## **EAST EXE PROBUS CLUB**

Around 35 members, many from Lymptstone, enjoyed a most interesting illustrated talk given by Lymptstone resident Ian Scott on his year managing a farming business in Malawi. Our next meeting will be a talk by the well known Devon raconteur Simon Dell OBE on WW2 in Dartmoor prison. Knowing Simon this will be very entertaining.

If you are a retired professional or business man and would like to meet for a coffee, chat and talk we meet on the first and third Wednesday mornings at Withycombe Rugby Club. For further details please contact Brian Cotton on 278631 or [briancotton@aol.com](mailto:briancotton@aol.com) (there is also a Probus Club for ladies.)

*Brian Cotton*

## **OH WHAT A LOVELY NIGHT**

Tickets are still available for the opening night of Oh What a Lovely War, which is Wednesday, 28th November. First nights are always special in the theatre, and this one looks like being very special indeed. Players productions usually open on the Thursday, but such was the demand anticipated for this show, that we decided to offer four public performances. As usual, tickets can be bought from Demelza, at 2 Brookfield Cottages, by phoning her on 272 243 (there is an answerphone on which you can leave your ticket requests, by emailing [lympstone-entertainments.net](mailto:lympstone-entertainments.net), or by posting money through her door if she is not in. Whatever you do, don't

miss this exciting production.

*Harland Walshaw*

## **LYMPSTONE WI**

We celebrated our 99th birthday with delicious fruit cake made by Linda.

The 'soup and pud' lunch was a great success, tasty home-made soups and a variety of puddings all enjoyed in a genial atmosphere.

The speaker, Paula Steer, cantered through her family history from 1891 when her great grandmother kept Dartmoor Grey Faced sheep. Paula still breeds and rears Dartmoors on the family farm near Chagford. She has developed a business, Lily Warne Wool 'from farm to yarn', selling beautiful coloured yarns, small woolly gifts and has the sheepskin contract for the Household Cavalry saddles.

Arrangements finalised for the members' Christmas meeting (Dec 5th) when members are invited to bring a small gift value £3-5.00 and a small plate of tea time food. The January meeting will be January 9th when Sue Knox will speak about the Lawrence Belvedere Tower. Future events include the Group Carol Service, January Supper at the Redwing, John Lewis Event and Pamper Days.

Lymptstone WI welcomes new members and normally meets on the first Wednesday of the month in the Methodist Church at 2.30pm, see the village website for more details.

*Terri Scott*

**The Little Plumbing Company**



**Fully Qualified & Insured Plumbers**  
**NO Callout Charges & Free Estimates**  
 See our reviews on 'Our Local Expert'  
[www.thelittleplumbingcompany.co.uk](http://www.thelittleplumbingcompany.co.uk)

**01395 741962**






Cycling for All

[www.rideoncycling.org](http://www.rideoncycling.org)

**RECYCLE YOUR OLD BIKE!**

Need to get rid of an old bike?

**PLEASE DON'T DUMP IT!**

Call Steve Morgan on

Mobile 07421 360299 or

Landline 01395 276020

to arrange local collection

and let us recycle it for someone else

to enjoy!

**COMPUTER  
REPAIRS**

**ELECTRO  
COMPUTERS**

**NO FIX - NO FEE**



**01395 548151 / 07944 051987**

[support@electrocomputers.co.uk](mailto:support@electrocomputers.co.uk)

**PAINTER & DECORATOR**

**Free Advice & Quotes**



**Specialising in superior high quality**

**Interior painting and decorating**

**Reliable & trustworthy**


**No job too small**

**Peter J Bond**

**Mobile: 0797 100 6957**

**Office: 01395 265202**

**Email: [bondpeterjohn@hotmail.com](mailto:bondpeterjohn@hotmail.com)**



**PETER J ACCA**  
 Property Maintenance  
**PVCU WINDOW REPAIR SPECIALIST**  
 Replacement Double Glazed Units

[theaccas@yahoo.co.uk](mailto:theaccas@yahoo.co.uk)  
 07801365097  
 01395489791

53 Evergreen Close  
 Exmouth EX8 4RR



**WINDOWS, DOORS,  
CONSERVATORIES,  
ROOF LINE and  
GENERAL PROPERTY  
MAINTENANCE**

**T: 01395 225643**

**M: 07794 477045**

**e-mail: [r\\_accas@hotmail.com](mailto:r_accas@hotmail.com)**

# Lympstone Village Hall

## Serving the community for 85 years

*The Village Hall needs to recruit some extra people to take us forward during a period of development and change. We need to find:*

- ⇒ *A **bookkeeper** with skills in QuickBooks or Xero, to set up and use on-line accounting for payments in and out*
- ⇒ *A **bookings manager** and/or **bookings assistant** to deal with our many and varied bookings*

*We'd like to find people willing to volunteer for these roles, but we would be willing to discuss payment for some of the work. For more details, or a discussion of how this could suit you, please contact Don Mildenhall, Chair of Trustees on 260500 or at [don@lympstone.net](mailto:don@lympstone.net)*

## LYMPSTONE HERALD NEW ADVERTISING RATES FOR 2019

These new rates will come in from next month for all new adverts and from January for ongoing adverts.

ADVERT TYPE	MONTH	HALF YEAR (6 issues)	YEAR (11 issues)
Full Page	£100	£500	£900
Half Page	£50	£250	£450
Quarter Page	£25	£125	£225
Boxed Advert	£15	£75	£135
<b>SMALL ADS (min. charge £5)</b>			
Example: 5 lines or less	5	25	45
Example: 7 lines or less	7	35	63
Example: 10 lines	10	50	90

Copies of the Lympstone Herald are delivered free to every household in Lympstone (approx 1100) every month with further copies being sold through the village shops. Please send your enquiries to Steve Morgan : [sjmorgan222@gmail.com](mailto:sjmorgan222@gmail.com)

**DISCLAIMER** This news letter is compiled from emails sent to the editors by numerous people and very little of the information is checked before publishing which is done in good faith. *Rob and Claire Hilton, Editors*



# Buying, selling or letting in Exeter and East Devon?

Another



review on **feefo** Independent Customer Feedback, the industry's independent customer feedback forum

## **'Professional, efficient & good humoured'**

*I rate Wilkinson Grant very highly during the process of selling my property. The staff have been considerate, well informed and have dealt with me with exceptional good humour. Their handling of this whole process has been faultless. If selling a property might ever be considered enjoyable, then this friendly and efficient team can achieve it.*

**Miss L Keeley, Exeter**

Find out why so many of our Exeter and East Devon clients  
rate us so highly for customer experience

**Call us now on 01392 875000**

**WG** Wilkinson  
Grant & Co

[www.wilkinsongrant.co.uk](http://www.wilkinsongrant.co.uk)

RESIDENTIAL COMMERCIAL LAND & DEVELOPMENT SALES ACQUISITIONS AUCTIONS  
LETTINGS & PROPERTY MANAGEMENT SURVEYS PROBATE & VALUATIONS



## THE GLOBE QUIZ

Eleven teams took part in a fun Halloween Quiz at The Globe in support of Exmouth & Lypstone Hospiscare. Thank you all so much, especially Adam & Jack, for the £100 raised for the Charity - we always hugely appreciate local events that help towards the running costs of our very local Charity.

*Frances Longhurst, Trustee*

## WHALE AND SHARK FISHERY?

I have been told that there was Whale and Shark fishery carried out in Lypstone years ago, do you know where about this was carried out. I am a wildlife film maker and looking at

the community's that hunted Basking Sharks in the UK, with a view to making a film about them. Please contact the editors with any information.

*Regards Alan Mildren*

## LYMPSTONE HISTORY SOCIETY

Our November talk 'Miscellany of little known facts about Devon churches' with speaker Martin Horrall will start at 7.30pm on Thursday November 22nd. As usual we will be in the Methodist Church Hall, Chapel Road, Lypstone, and the entry fee is £3.50 for LHS members, and £4 for non-members (refreshments included).

*Mary Turner*

## SMALL ADS

### GARDEN JOBS

Jenny is still digging for Oxfam. £10/ hour, all to Oxfam. 07929 416066

*Jenny Moon*

**ELECTRICIAN** Lypstone based, specialising in domestic work. Happy to do small jobs. Call Simon on: 07985 963075

### FOOT HEALTH PRACTITIONER

Lindsey Waddell MAFHP. Nail cutting, foot care, treatment of corns and callus. Home visits. 01395 263496

### HEALING & FLOWER ESSENCE THERAPY

- Natural ways to maintain a sense of well-being. Appointments, more info Tel. Karen - 01395 269323

### SIMON AND JACKIE QUICK

#### THE LOG MAN AND LOG LADY

For all your log, coal, kindling and gas supplies. Tel: 01395 267490

### PROPERTY MAINTENANCE -

Carpentry, Flooring, Fencing, Gates, Decking, Bathrooms, Kitchens, General Repairs. Free advice & estimates. James Waddell 01395 263496

### TOENAIL CUTTING AND GENERAL FOOTCARE

Toenail reconstruction and Lacuna™ fungal nail treatment. Home visits.

Anne Reeves (MRFHP)

Foot Health Practitioner.

Tel: 01395 225062 / 07515 860347

## SMALL ADS

### **FOOD WITH FLAIR**

Excitingly different Caterers  
For Every Event Large or Small.  
Buffets, Lunch and Dinner Parties,  
Canapes, Main Course Casseroles,  
Salads, Desserts or Individual Dishes  
to suit your personal budget.  
Telephone Shirley - 01395 265147  
Email [shirley@foodwithflair.co.uk](mailto:shirley@foodwithflair.co.uk)

### **HOLISTIC MASSAGE TREATMENTS**

Prescriptive aromatherapy oils blended  
for individual treatments. Aromatherapy  
massage, Swedish massage, Indian  
head massage, rejuvenating facial  
massage.  
Other beauty treatments available.  
Local beauty room with parking.  
Tel: Zena James MGHT 07958 599387

**PIANO with a VIEW** Lessons for all  
ages, beginners and improvers, "purely  
for pleasure" and ABRSM exams to  
Grade 8. Theory to Grade 5. Tel: Judy  
Joss (BA Mus, Dip Ed) on 01395  
222749 or 07939 126190.

### **ACCOMMODATION**

**HOLIDAY COTTAGE** Cosy cottage  
in centre of village. One double room  
and further room with bunks. Minimum  
2 nights in low season and 4 nights in  
high season. Call Pete or Jan on 01395  
488123

**MATHS TUITION** Experienced tutor  
available to teach primary to GCSE  
level maths. Reasonable rates  
Tel: Jane Moffatt on 279952 or  
07730877889

### **WITHALL'S HOUSE BED AND**

**BREAKFAST.** A modern and spacious  
home close to the heart of the  
village. Ample parking and flexible  
accommodation. Call Pete and Jan  
Hardy on 01395 488123 Or visit [www.lympstonebedandbreakfast.co.uk](http://www.lympstonebedandbreakfast.co.uk)

**TO RENT** Newly renovated 2 bedroom  
cottage. Brand new kitchen & bathroom  
with spacious open plan living room.  
Fully furnished with small garden.  
2 good size bedrooms. Available ASAP.  
Non smoker, pets negotiable. For more  
info tel Sarah on 07719 769750, or  
email [sarahgeale@hotmail.co.uk](mailto:sarahgeale@hotmail.co.uk)

**BYRE COTTAGE** - Self-Catering  
Holiday Let.

Byre Cottage is a delightful two bedroom  
self-catering holiday let with traditional  
features and a lovely rustic feel in a  
contemporary style. Boasting two light  
and airy bedrooms, accommodating up  
to four guests, and a well-behaved dog.  
Contact: Den and Jules 01395 275679,  
mobile 07595540562 or  
email [info@theolddairylympstone.co.uk](mailto:info@theolddairylympstone.co.uk)  
[www.theolddairylympstone.co.uk](http://www.theolddairylympstone.co.uk)

# WHAT'S ON IN LYMPSTONE

## NOVEMBER

9 Literature and Landscape - TAP

9-11 Armistice Weekend

11 Armistice Day

14 School in Action - St Peter's School

15 Fantasy Department - Library

17 Arts and Crafts Christmas Sale

20 Garden Club AGM

21 Friends of the Church Concert

22 History Society - Devon Churches

23 Simple Things Do Do - TAP

28, 29, 30 Oh What A Lovely War

---

## DECEMBER

1 St Peter's School Christmas Fayre

3 Parish Council

5 WI Christmas Party

8 Furry Dance Santa & Mulled Wine

9 Mobile Library

19 Carol Singing Around the Village

22 Christingle

---

## JANUARY

7 Parish Council

9 WI Meeting

