

Volume 45, No 8

MAY 2022
50p where sold

THE LYPMPSTONE HERALD



Editors: Claire and Rob Hilton - lympstoneherald@hotmail.com | 07739969311

Advertising: Steve Morgan sjmorgan222@gmail.com | 01395 276020

Copy deadline for the next issue : Wednesday 11th May, 6pm by email

Distribution by Robin and Judith Telfer Tel. 272275

Cover Illustration: 'Waiting Boats' by Louise Banks

Village website: www.lympstone.org | webmaster@lympstone.org

PARISH COUNCIL NEWS

The Annual Parish Meeting (APM) was held on Monday 4th April in the Meeting Room at 7pm.

The following groups submitted reports for the Parish – Lympstone Flood Resilience Group, History Society, Lympstone Community Hub, Gulliford Burial Ground, Phone box book swap, Lympstone Village Hall CIO, Heathfield Allotments, Lympstone Village Website and Lympstone Youth Club. And, although it had still been a turbulent time for groups to meet and deliver, they had remained resilient and continued to do an amazing job! A massive thank you to all the volunteers who continue to support and work tirelessly for our community within our fantastic groups in the Parish. Thank you!

Following on from the APM, LPC held their monthly public meeting on Monday 4th April in the Meeting Room.

Sgt Stonecliffe - The Chairman welcomed Sgt Stonecliffe to the meeting and invited him to speak. Sgt Stonecliffe explained that he was the neighbourhood Sergeant for the area. He thanked Cllr Linfoot for the invitation to the meeting and presented reports of crime in Lympstone. Sgt Stonecliffe pointed out that anti-social incidents had reduced due to Covid19. He had noted the recent online reports for the public toilets in Lympstone and the request

for a heightened police presence in the village. He explained that he had recently been in to visit the reception children at the primary school and the children had thoroughly enjoyed finding out about the role of the police and how the lights worked on their car!

Clerks Report –The following initial new committees were agreed: **Planning including trees and hedges** – Cllr Linfoot, Cllr Tyrrell and Cllr Francis (inc East Devon Local Plan and Lympstone Neighbourhood plan), **Parish paths, bridleways, rural and village footways and roads** – Cllr Beatty, Cllr Francis and Cllr Staddon (inc Getting around group, Exe Estuary Trail), **Assets, buildings, land and finance** – Cllr Atkins, Cllr Hill, Cllr Tyrrell and Cllr Payne (inc NT field management, grants, football club, Facilities and Estates, Amenities: FLOS, LPC cemetery, The Hub, The Green, The Rag, Green open space at the Nurseries site, The Public toilets. Benches, Gulliford Joint committee and FOBGB), **Community** – Cllr Linfoot, Cllr Francis, Cllr Payne and Cllr Staddon (inc Communications, Youth Club/The Hub, Village Hall, CTCRM, Community Hub group), **Environment** – Cllr Staddon and Cllr Tyrrell (inc Exe Estuary, Wotton Brook, Emergency Plan, Allotments, Exe estuary trail, LFRG), **LPC Cllrs, staffing and compliance** (All Cllrs and Clerk).

Sadly, the start date for the Candy's Field play area refurbishment has been delayed due to unforeseen circumstances. The PC unanimously agreed to install new CCTV in the public toilets (EDDC permission pending). It was also unanimously agreed to plant a new Oak tree in Candys field in the Autumn to replace the old dead oak tree that was felled due to health and safety reasons. The grant application received from the primary school's PTFA was unanimously supported.

Report from the Chairman, EDDC

Cllr Jung - The Chairman informed all present that he had met with Alison Hernandez, Police and Crime commissioner, in March and learnt about the police initiative 'Operation Scorpion'. District Cllr Jung reported that there had been an issue installing electric vehicle charging points and the village car park would have these hopefully installed in May.

East Devon Local Plan Review - Cllr Linfoot explained that the public are invited to drop-in sessions to view and discuss the proposed development sites. All maps of the Parish and proposed sites would be displayed with questionnaires for the public to complete. He invited the District and County Cllrs to come along and listen.

*** *'The existing East Devon Local Plan*

expires in 2026. The current review will last until 2040 and will include housing developments to meet Government set housing needs. As a Parish we must put forward our response and to have our own needs considered as part of the process.

Feedback provided will help shape the response given to EDDC by the Parish Council.'

DATES FOR YOUR DIARY: Public drop-in sessions to express your views on the East Devon Local Plan Review proposed development sites: **29th April 2-9pm and 30th April 9am-1pm in the Meeting Room at the Village Hall.** Please come along if you can! ***

NP Review - Cllr Linfoot explained that the Lypstone Neighbourhood Plan review document had been returned from Angela King, EDDC NP Officer, and it would now be uploaded to the website for members of the public to view.

The next PC meeting will be held in the Meeting Room on Tuesday 3rd June 2022 (due to bank holiday Monday) at 7.30pm.

Clerk to the Council:

Lucy Tyrrell c/o Minnows, Longmeadow Road, Lypstone EX8 5LF

Tel: 07890717081

Email: lypstonepc@gmail.com

PASSMORE PLASTERING

- Domestic and Commercial
- 30 Years Experience
- Internal Plastering
- External Rendering
- Traditional Lime Plastering
- Free Estimates and Advice
- Reliable, Professional Service

Telephone: 01392 432872

Mobile: 07952 643513



**WINDOWS, DOORS,
CONSERVATORIES,
ROOF LINE and
GENERAL PROPERTY
MAINTENANCE**

T: 01395 225643

M: 07794 477045

e-mail: r_acca@hotmail.com

CLOCK REPAIRS

**Terence C. Matthews,
Horologist**

Tel: 01395 273563

All clocks repaired, including
Westminster Chimes, Wall Clocks,
Grandfather & Grandmother Clocks,
Dial Clocks, Long Case and Carriage
Clocks.

Free estimates provided, with house
visits.



houseit
your key to secure storage

**01395
239 400**

self storage made easy

Woodbury Business Park • Woodbury • Nr Exeter www.house-it.co.uk

lendology-cic



Lending with Heart and Mind

East Devon District Council fund a not-for-profit
loan scheme for homeowners and landlords*.

We understand the expense of maintaining your
home and we work with you to take the stress out
of funding repairs, improvements or adaptations.

We see you as an individual, not a credit score.
Our knowledgeable team of advisers will guide
you through the process of applying for a home
improvement loan.

For a no-obligation assessment
or more information visit
www.lendology.org.uk or call 01823 461099

Heatherton Park Studios, Bradford on Tone, Taunton, TA4 1EU

*subject to eligibility

LYMPSTONE



Serving the people of
Lymstone & beyond with joy.

PARISH CHURCH

The Church **Electoral Role** is being updated by Jill Wilson, the electoral role officer for the church. Forms to apply for church membership are in a yellow folder by the noticeboard in church. You have just joined the congregation and you are over 16, then you are eligible.

Church AGM. The AGM will follow the 9.30am service on 1st May. The approximate start time being 10.30 or soon after. There will be the usual elections for Warden, Sidespeople and members of the Parochial Church Council. Nomination forms are available from Jeff.

Lympstone Unlocked is the time for 7 to 11 year olds in church. Next one is on Sunday 15th May from 5 to 6pm. Information from Fiona on 07935 594030

Tick-Tock Fridays term-time 9 - 11am for toddlers and parents/carers

Parish Office Administrator Karen, our cool expert at HolyTrinity, 2 Rolle Rd, Exmouth EX82AB 263681.8:30am-2:30pm Mon-Fri office@exmouthcoastalchurches.org.uk

Church Website Follow church activities by visiting the website at lympstonechurch.com

Flower Arrangers.

The church has been blessed with an enthusiastic team of flower arrangers led for a number of years by Carol Major. Carol has been a great leader and responsible for many arrangements including Flower Festivals and wedding arrangements. She has recently retired and will be missed. If you are interested in taking over this important role please see Jeff.

Queen's Jubilee. On Sunday 5th June the 9.30 service will be a special; celebration to give thanks for Her majesty's 70 year' reign. A unique moment in our nation's history.

Brian Mather



TOPSHAM
SATURDAY
MARKET

Matthews Hall
Every Saturday
8.30am - 1pm

FRESH LOCAL PRODUCE

HOMEWARE

GIFTS, CRAFTS AND CURIOS

GREEN LYMPSTONE TO BE RENAMED 'WILD ABOUT LYMPSTONE'

A steady stream of good news stories are beginning to emerge from across the village – thank you so much to everyone who has been in touch.

Each month we'd like to share a few of these with you. No matter how big, or small, every effort is valuable and together, we can make a real difference to protecting, enhancing and celebrating our amazing local wildlife and nature.

The Strand - Sally has been a nature enthusiast for years and is wonderfully creative when it comes to supporting wildlife and nature. She works two half allotments in the village with nature in mind. She never uses chemicals and is happy with 'untidy' - allowing the grass to remain uncut in the spring. Sally has put up robin nest pouches, an insect hotel, and grows flowers and green manure crops like phacelia specifically to attract pollinators. Closer to home, she keeps overlarge shrubs outside her window for sparrows to shelter in and keeps a welcoming bird feeding and birdbath area.

High Wotton – Judy tells us she has an 'intrinsic disregard for tidying up'! A sure sign of a true nature lover! Knowing that nature and wildlife flourishes when its left to its own devices, Judy ensures



M HOBBS ROOFING
07525146585

mhobbsroofing@gmail.com
Roofing contractor
07525146585

1 Pines Road
Exmouth

PAINTER & DECORATOR
Free Advice & Quotes



**Specialising in superior high quality
Interior painting and decorating
Reliable & trustworthy
No job too small
Peter J Bond
Mobile: 0797 100 6957
Office: 01395 265202
Email: bondpeterjohn@hotmail.com**

she leaves plenty of decaying organic matter lying around in the garden and, over the past few years, has started to leave her orchard grass to grow all summer. She's been delighted to see that this has led to lots more wildflowers naturalising and has attracted larger numbers of bees and other pollinators. Her humble favourites that attract pollinators in the winter is the heavenly-scented honeysuckle shrub happily ensconced in her veg patch! In summer, it's the cotoneaster horizontalis, which literally shimmers and buzzes with pollinators when its tiny cream flowers are in bloom. Judy tells us - 'being so ordinary, it is truly extraordinary'.

Re-wilding at The Old Dairy - has begun in earnest with the planting of 150 hazel and hawthorn saplings. This will create a native hedgerow and small woodland area, providing a wildlife corridor and food and shelter throughout the year for birds, butterflies, bees. Vastly underestimating the sheer hard work required to plant so many bare root trees and hedging plants, Jules and Den enlisted support from the wonderful local community. Along with daughter, Ella, Steve Archer and Paul Burke gave up their Saturday afternoon, and together they managed to get them all planted! As Paul so eloquently put it "it feels amazing to create something that will outlive us all!". They have been successful in securing 500 native trees through Devon Wildlife Trust's 'Saving

Devon's Treescapes' scheme which will be planted later in the year. Anyone interested in helping to plant – please get in touch!

150 m2 of native wildflower and grass seed, including primulas, campion, foxgloves and cow parsley have also been planted along the sunny, sheltered bank to provide a rich, biodiverse area for the many insects, butterflies and bees.

Next to be created will be a large wildlife pond to attract an even greater diversity of wildlife, and amazingly House Martins are already eagerly swooping down to collect nesting material from the muddy puddle in the bottom! Any 'pond experts' with experience of creating a large wildlife pond please get in touch – Jules and Den would be grateful for any advice or help!

Keep your stories coming!...We'd love to hear more so please do send us a few details on our questionnaires which you can find either in the coloured boxes in the shop or church porch, or on the village website.

Rebecca Abrahams,

rebecca_abrahams@yahoo.com

Mary Truell, Netherexe, The Strand
01395 276793 truell@me.com

ZOOMING AN OSCAR WINNER

Lympstone Film Society had one of its finest evenings on 9th April, when it showed *The Man in the Hat*. This captivating film accompanies a solitary man (played by Ciarán Hinds) driving through the French countryside from Provence to the Cevennes followed by five threatening pursuers.

this film for us and arranged for the live zoom session, thanked him for generously giving his time to talk to Lympstone filmgoers, to answer our questions so eloquently, and to take us behind the scenes and into the thought processes of its production. "What a wonderful evening we all had," Marj



After the film, the audience took part in a zoom Question and Answer session with its co-writer and director, Stephen Warbeck, directly from Marseilles where he was attending a film festival. Made two years ago, this is Stephen's first film as a director, although he has long been famous as a composer of film and television music – including the scores for *Prime Suspect* and *Shakespeare in Love*, for which he won an Oscar.

said. "Everyone loved this beautiful and thoughtful film."

Our final film of the season is *The Constant Gardener*, based on the John le Carré novel and starring Ralph Fiennes and Rachel Weisz, which will be shown on Friday, 6th May. It is open to non-members at £5 each, and the doors open at 6.45pm for a 7.30 showing.

Marjorie Brewer, who discovered

Harland Walshaw

METHODIST HALL UPDATE

The Parish Council is continuing to pursue the purchase of the Hall despite their initial offer being rejected by the Methodist Trustees. The Trustees plan to test the wider market in due course.

However the current building is protected for Community Use under Strategy 32 (Resisting Loss of Employment, Retail and Community Sites and Buildings) and Policy RC6 (Local Community Facilities) of the adopted East Devon Local Plan.

These policies seek to retain buildings such as the Hall in community use and resist their loss or change of use to other uses, particularly residential. The only circumstances where development or a change of use would be supported by the District Council is where the building is no longer needed for community use. If the building is no longer required by the current owners, in order to gain planning permission for an alternative use, they will need to market the building widely and at a reasonable market value for at least 12 months and following this demonstrate that there is no other community interest in purchasing or renting the building.

126 out of the 150 replies received in the recent survey were in favour of the Parish Council purchasing the Hall. In the light of this support and the policies

of the East Devon Local Plan the Parish Council is hoping that the Methodist Trustees will be willing to enter into negotiations with them rather than put the building up for sale on the open market .

Helen Dimond on behalf of the Friends of the Methodist Hall

LYMPSTONE HISTORY SOCIETY

Our next talk is at 7.30pm on Wednesday 18th May in the Village Hall Meeting Room, when James Clark will tell us about The Dissolution of the Monasteries. James' book on the subject was published last year. This talk will be preceded by a brief AGM.

Our thanks go to Brian Cotton, who will be stepping down from the committee and from the role of programme coordinator. Brian has already planned our autumn programme, but our regular talks will have to stop after Christmas unless new members come forward to help on the committee. If anyone is interested in getting involved in any aspect of the History Society then please let us know. You can email us on lympstonehistorysociety@gmail.com or chat to one of our committee members.

Mary Turner
Secretary



Coombe Community Consultation

**Drop-in Thursday 12 May from 2pm – 8pm
Lympstone Village Hall**

Meet the Woodland Trust to find out how we plan to create a woodland haven for wildlife at Coombe. Share your thoughts and ideas. Find out how you can get involved in this exciting project, made possible following a successful public appeal.

If you cannot make the consultation, an online survey will also be available. For more information:
southwestenquiries@woodlandtrust.org.uk

VOLUNTEER OPPORTUNITIES

Visit www.woodlandtrust.org.uk and search 'volunteer'



WOODLAND
TRUST

The Woodland Trust logo is a registered trademark. The Woodland Trust is a charity registered in England and Wales number 294344 and in Scotland number SC038885. A non-profit making company limited by guarantee. Registered in England number 1982873.

LYMPSTONE VILLAGE HALL UPDATES

We continue to work hard to make the Village Hall a high quality, secure facility for the whole Lympstone community. Recent enhancements to the facility include the new LED above-stage lighting in the Main Hall, controlled by a fantastic programmable desk which is quite straightforward to use. We are also in the process of establishing a plug-and-play system to make it simple to show films from DVD and allow for multiple input presentations and shows.

We now have planning permission to level the land between the Hall and Candy's Field. This will enhance the area, and improve safety for the many people who walk through it every day by removing steps and slopes, providing tiered seating beside the tennis courts and provide disabled access to our Meeting Room and to the Stage. If you know any local firms who could quote for the ground-works involved, then please ask them to contact us for more information on enquiries@lympstonevillagehall.org.uk or contact Carrie (Chair of Trustees) on the number below.

We try our best to respond to any concerns that are raised with us, in order to continually enhance and improve what we do. Unfortunately, it's not possible to please everyone all of the time, but we do give careful thought

to your concerns and suggestions.

Now that life is getting back to 'normal' we are finding our spaces are in great demand, and the new booking system has been helping us to manage this high demand – thanks so much to Caron for her hard work on this. Please make sure you go via our website www.lympstonevillagehall.org.uk to plan and make your bookings. The old .co.uk email addresses (from the old website) are no longer in use and are only occasionally checked, so please make sure you are using our new email enquiries@lympstonevillagehall.org.uk when you need to contact us.

We would like to encourage more people to get involved with the Hall, and we recognise that many do not want to be part of a committee. We would like to develop a 'Friends of Lympstone Village Hall' group for people who would like to occasionally get involved, but without the commitment of becoming a Trustee. We already have a few people who have helped us with our maintenance checks, occasional events, decorating, and even watering plants. If you have any spare time and would like to have a chat about helping in any way, please give Carrie a call on 01395 279939.

LVH Management Team



TRY OUR FREE* PROPERTY SEARCH AND ACQUISITION SERVICE

Struggling to find your next property?

Keep missing out on properties before you can even view?

Our FREE* Search and Acquisition Service might be just what you need.

Designed to help our Vendor clients find their ideal home.

To find out more, please give us a call.

*T&Cs apply

01392 875000 | topsham@wilkinsongrant.co.uk
www.wilkinsongrant.co.uk

WG Wilkinson
Grant & Co

**QUEEN'S
PLATINUM JUBILEE
CELEBRATION
2nd-5th June 2022
LYMPSTONE VILLAGE**

Entry to all venues is free!

Thursday 2 June

**CLIFF FIELD
7pm – 10.30pm**

**LIVE MUSIC
with “CHARGE”**

Food and drink

BEACON LIGHTING at 9.45pm



This weekend has been financed by
Lymestone Community Hub,
through Lymestone Parish Council.

Friday 3 June



BELL RINGING

Lympstone Parish Church

Support your local....

Pubs will be serving meals
– you may need to book!

The Globe Inn ...with entertainment

The Swan Inn ...with Commonwealth themed menu

The Redwing ... serving a menu of British food from
the time when everyone had a Silver Jubilee mug and
strawberries were only available in the summer.

The Saddlers Arms

and

Ingham Fisheries ...will be serving their very special
fish and chips!

Lympstone Film Society



Film Night: 'Land Girls'

and a talk by Becks Pearson

7.30pm in the Village Hall

Saturday 4 June

Profits/donations will go to the primary school and pre-school

-  Parking at the Village Hall for disabled badge-holders and performers only!
-  Free entry to all venues but some activities may carry a small charge.

VILLAGE HALL: 2pm – 5pm

Workshops: 'Storytelling' and 'Teddy Bear Making for Over 10's' with Jenny Moon

- **free**, but booking required. Donations welcome.

Bake Off! Adults and Kids.

Tennis tasters please bring own trainers

- rackets and balls provided

Tea, coffee and cakes in the Community Room

CANDY'S FIELD: 2pm – 10.30pm

- Food & beer/ Pimms/ Prosecco
- Live Music
- Tug of War
- Kids' Treasure Hunt
- Village Society Stalls
- Gladiator fight
- Miniature Steam Railway
- Football shout-out

.....**and much more!**

Sunday 5 June

CHURCH SERVICE

9.30-10.30am

CREAM TEA

FREE EVENT!

Register at largestcreamtea@yahoo.com
to take part in this fun world record attempt!

Candy's Field

12.30pm Check in

1pm Take your seat!

2.30pm Event ends

Funded by the National Lottery

Donations and any profits from Sunday's events will go to:
the Royal Marines' (CTCRM) Charity

A REQUEST FROM THE PARISH COUNCIL AND THE LYPSTONE FLOOD RESILIENCE GROUP

We have received reports of some debris in the Wotton brook, including construction timber, a broken ladder, and very large tree branches. It is likely these items have been left on the river banks in gardens at properties adjoining the brook and washed downstream when the brook has been running high. Items such as these are a flood risk, potentially creating blockages and causing the build up of other debris in the brook, and/or blocking the trash screen in the lower village.

Can we please remind anyone who owns a property alongside a watercourse, or who has a watercourse running through their land of one of their key responsibilities. This is to 'maintain the watercourse and to clear any obstructions, natural or otherwise, so the normal flow of water is not impeded. This means you must clear any debris from your stretch of the watercourse, and its banks. (Environment Agency, Riparian responsibilities)

If you see any large debris in the brook that could be a flood risk, or if you are a property owner who needs assistance clearing debris from their garden next to the brook, please get in touch with us at the email below.

Thank you for your help in making Lympstone a flood resilient community!

Phil Corcos

*Lympstone Flood Resilience Group
philcorcos@gmail.com*

FRIENDS OF UNDERHILL SURGERY

It is with regret that the committee of Friends of Underhill Surgery have found it necessary, after 19 years, to close the service of transportation to medical appointments and prescription deliveries for its members with effect from 1st April 2022. During the last two difficult years, for many reasons, the number of our volunteer drivers is reduced to less than half that to sustain the service. The funds remaining, including the generous donation from VATS theatre group via Chris Barnacle, will be handed over to enhance the facilities at the Lympstone Surgery. A copy of the final examined accounts will be available at the surgery. Our grateful thanks go to all our volunteer drivers, past and present, to all the committee members and particularly to Gillian Hipkins who, for many years, has carried out the difficult and time consuming post of co-ordination of the scheme and also additional thanks to the surgery staff.

*Norma Exelby
Chair
FUS*

QUEEN'S PLATINUM JUBILEE CELEBRATIONS

Lympstone Community Hub has planned a number of exiting events for the weekend of the Queen's Jubilee Celebrations. There is a pull-out of the 4 days of events in the centre of this Herald. A full 12 page programme will be published in mid-May and will be available from village outlets. All venues will be free to enter but there may be a small charge for some activities. Full details will also be published on the Lympstone Website and Facebook page.

THURSDAY 2 JUNE

BEACON LIGHTING

CLIFF FIELD

There will be a party on Cliff Field from 7pm – 10.30pm with the Beacon Lighting by village locals at 9.45pm. This is a Commonwealth Wide event. Can you help by supplying wood for and building the Beacon (a very large bonfire)? Please contact Lucy Tyrell (Parish Clerk) at lympststonepc@gmail.com.

The scouts will be serving food & soft drinks. The Globe will be operating a bar. Live music will be provided from 'CHARGE'.

FRIDAY 3 JUNE

LOVE YOUR LOCAL!

VARIOUS

The Globe, The Swan and The Redwing are all laying on a special Jubilee themed evening menu, and Jason is serving fish and chips. Book early to secure your place and show our village pubs your support!

Bell ringing in the village during the day.

SATURDAY 4 JUNE

BAKE-OFF WITH PRIZES!!

VILLAGE HALL

Get your apron on! Inspired by the Queen's Platinum Pudding Competition, Lympstone is hosting its own 'Bake Off' as part of our bumper weekend of Jubilee celebrations.

We'd love you to come along to the village hall on the day with six of your own home-made muffins/cup cakes, then spend an hour decorating them to six individual designs on the theme of royalty and/or English puddings.

In true Bake Off style, we will have celebrity judging (Kay Uphill and a celebrity guest!) and some special prizes. The competition is open to everyone and all you have to do is pre-register by emailing doreenmurray999@googlemail.com to make sure we have a workstation ready for you on the day. We'll give you all the information you need to come along ready to get decorating.

While the competition is taking place there will also be the chance for younger

aspiring bakers (age groups 3-6yrs, 7-10yrs and 11-16yrs) to have some fun, with pre-baked cookies, icing and sprinkles all on hand so they can be creative. Look out for posters around the village during the next few weeks.

SATURDAY 4TH JUNE VILLAGE PARTY & MUSIC FESTIVAL CANDYS FIELD

There will be many exciting events taking place over the afternoon and evening. Remember the Queen's 90th Birthday Party? – we are aiming to have a better one this time!! Lots of activities and live music over 8 hours. Tug of war competition, gladiator duel, steam engines, miniature steam railway, ice cream van and lots more! There will be a barbecue, Beer tent, Pimms & Prosecco bar and the Youth Hut will serve some food and soft drinks. The Swan is operating the bar. Profits and donations will be shared between Lymestone School and Pre-school.

Jenny Moon will be holding free workshops in the Village Hall 'Teddy Bear Making for over 10's' and Storytelling for kids (older than toddlers). As numbers are limited you will need to email malcandlinda@aol.com if you are interested. All children must be accompanied by a responsible adult.

SUNDAY 5TH JUNE WORLD RECORD CREAM TEA CANDYS FIELD

We now have a waiting list for this free event. We will provide the tables, chairs, tablecloths and cream tea for free and participants must be able to consume English Breakfast tea and a full cream scone for it to count. However, we still need Dozens of Volunteers to help steward the event – please see details below. Donations will be given to the Royal Marines Charity in recognition of the support they have given us for this event and for the sterling work done by Vicki Drinkwater in making this world record attempt possible.

VOLUNTEERS

We still need LOADS of volunteers to help us put on these activities, especially on Saturday and for the Cream Tea on Sunday (where we need about 50 volunteers for 2 hours to monitor the record breaking attempt). If you are willing to help out by setting up events, serving drinks, being a steward for an hour or so, or helping to clear up afterwards please contact Linda Lyon at malcandlinda@aol.com. She can email you a detailed list of what is needed and when.

Finally, please ensure you come along to these events and help us to celebrate our Queen's remarkable and unique achievement in serving her country for over 70 years.

Support our vision for a clean, healthy and active Exeter and Devon.

Ride On

Cycling for All

Help us get more people cycling.

We refurbish secondhand bikes to get more people cycling in an affordable and sustainable way, which is made possible thanks to your help.

Donate a bike!

If you have any old or unused bikes taking up precious space, don't let them go to waste. Consider donating them to our charity.

We've been able to put
over



bikes back on the road
since 2011!

Drop-off Location

**8 Grange Close
Lympstone
EX8 5LD**

Call Steve Morgan on 01395 276020

61 Haven Road, Exeter, EX2 8DP

Registered Charity Number: 1174055

THE 2022 SAILING SEASON IS FINALLY HERE!!

By the time your reading this, the boats will have been craned in, the Dinghy's returned to the boat park and with those glints of glorious weather, people have been drawn to the water like a crab to bacon.

Sadly we are waving goodbye to our winter talks, quizzes and to those fabulous mariners munches. A big thank you to all those members who helped produce such wonderful dishes and thanks to those who joined us at the club.

No fear to waving these activities goodbye, I have a feeling this year will be a good'un!! We have a summer programme filled with lots of sailing and other on the water activities (including RYA sailing and first aid events, and paddleboarding). Not only that but there's much opportunity for off the water activities including the opening of the season fish and chip supper, BBQ's. We will also be hosting Lite Bites on Friday evenings after sailing when the tide is right, and sailing is in the programme. We are always after volunteers to help at these events so please get involved if you are able too.

To all existing members, Don't forget - The bar with the best view in Lympstone is always open on Friday evenings from 7:30pm and the drinks are the cheapest

in Lympstone.

We welcome new members and no previous sailing experience is needed. We have some taster sessions in April and May, but if you miss these there's always someone willing to talk you through it, and there's boats available to book on the website. Alternatively let us know what you want and we may be able to help find other opportunities. Why not have a chat with Nick, our membership secretary if you're interested in joining. All information is available via our website:

lympstonesailingclub.co.uk.

We look forward to seeing you on/off or by the water soon,

Lympstone Sailing Club



Hilton Barnfield Architects

RIBA OFFGRID 2030 COMPETITION - COMMENDED

"Engaging, beautiful and well considered." - Judging Panel

www.hiltonbarnfield.co.uk • 01392 349222

THE RETURN OF GERONWY THOM

A FREE SHOW ON THE SLIPWAY

Four years ago, Lymptstone was entertained by a free show on the boat shelter slipway by the extraordinary Geronwy Thom, whose performances amaze and amuse audiences of all ages.

We are thrilled to announce his return.

Immediately after his last Lymptstone performance, Geronwy flew off to South Africa to star in the biggest comedy show in Africa. He has toured the World, bringing his unique style to countless audiences, including at The National Theatre and The London Palladium, taking his cabaret troupe to the Edinburgh Festival and Just For Laughs in Montreal, and has performed street theatre in most countries across Europe and on many Cunard Liners.

Once again, you are all invited down to the slipway, at 12 noon on Sunday, 12th June, to enjoy the improvisation, circus skills and infectious energy which make his performances such unmissable experiences. What is planned and what is chance?

Expect the unexpected and make your way to the Boat Shelter to see the show.

Lymptstone Entertainments invites you

all to this wonderful free Entertainment!

TWELVE DAYS LATER...

Another great Lymptstone favourite, The Budapest Café Orchestra, returns on Friday, 24th June, with their special brand of Balkan gypsy-flavoured music that will sweep you off your feet. There's sure to be a rush on the tickets, so head for Demelza's as soon as you can (and buy a pot of her delicious jam at the same time).

Harland Walshaw

*Yoga with
Claire*

Mondays 9.15am & 7pm
Lympstone Village Hall

Thursday 8.15am Story yoga
Lympstone Village Hall

Mondays 11am & 1st Wednesday of the month

Yin & Rest 7.30pm KIVA & ZEN STUDIOS

2 OAKS

www.2oaksyoga.co.uk



YOGA

Claire.hilton@icloud.com

travel counsellors



Adrian Walters, Travel Counsellor

Your personal Travel Expert

01395 350017 or 07866 716478

adrian.walters@travelcounsellors.com

www.travelcounsellors.com/adrian.walters

With us...it's personal



LYMPSTONE ART EXHIBITION



DON'T FORGET TO VISIT THE ART EXHIBITION DURING HALF TERM WEEK

We are open from Sunday 29 May to Friday 3 June, 11am to 5pm in the Village Hall.

Entry is £1, free to age 16 and under. Lots of great artwork for sale as well as tea, coffee and home-made cakes so bring some friends and pay us a visit.

We have a **COMPETITION FOR YOUNG PEOPLE**, age 2 to 16, to draw or paint a picture on a postcard. Free postcards available at the exhibition and they can be drawn or painted at the

Village Hall or taken home to complete. For those not here at half term cards can be collected and from Susannah's Tea Room, The Strand in the week before and can be posted through the door of Lime Kiln House next door. Postcards completed during the exhibition week to be returned to the Village Hall by 5pm on Thursday 2 June. Judging and Prize Giving for different age groups will be at 2.30pm on Friday 3 June.

Judith Carter
Lympstone Art Group

(Painting by Jayne Farleigh)

SMALL ADS

GCSE & A LEVEL SCIENCE TUITION

by an experienced, current, science teacher. All science subjects to GCSE and also A level Biology taught.

Tel: Mark Moffatt on 07730 877889

PROPERTY MAINTENANCE -

Carpentry, Flooring, Fencing, Gates, Decking, Bathrooms, Kitchens, General Repairs. Free advice & estimates. James Waddell 01395 263496

HOLIDAY COTTAGE Cosy cottage in centre of village. One double room and further room with bunks. Minimum 3 nights in low season and 4 nights in high season. Call Pete or Jan on 01395 488123

WITHALL'S HOUSE BED AND BREAKFAST.

A modern and spacious home close to the heart of the village. Ample parking and flexible accommodation. Call Pete and Jan Hardy on 01395 488123 Or visit www.lympstonebedandbreakfast.co.uk

THE OLD DAIRY B&B AND HOLIDAY COTTAGE, LYMPTONE

3 spacious B&B rooms and 2-bedroom self-catering cottage. Secure, private parking. Contact: Den & Jules
01395 275679 / 07595 540562
E: info@theolddairylympstone.co.uk
www.theolddairylympstone.co.uk

PROPERTY & HOUSE MAINTENANCE

TREVOR HARRIS

Please contact Trevor on:

L: 01395 223916 or M: 07969 231333

e: trevor.harris1@sky.com

SIMON AND JACKIE QUICK

THE LOG MAN AND LOG LADY

For all your log, coal, kindling and gas supplies. Tel: 01395 267490

MATHS TUITION Experienced tutor available to teach primary to GCSE level maths. Reasonable rates Tel: Jane Moffatt on 279952 or 07730877889

GARDEN JOBS - Jenny Moon

Jenny is still digging for Oxfam. £10/hour, all to Oxfam. Tel: 01395 708850

HAIR BY SHARON

Mobile Hairdresser

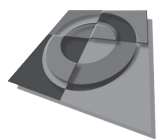
Have your Hair done in the comfort of your own home.

Please ring Sharon on:

M: 07385 048150

TINYPAWS

Cat-Sitting, and Boarding of other Small Pets (not Cats)
Please call for more information.
M: 07385 048150



optima graphics

TOPSHAM LTD

*We provide a high quality, good value,
prompt design & print service*

silk screen, digital, wide format, litho printers
full design service including web & email graphics, digital forms

Brochures, Posters
Leaflets, Flyers, Newsletters
Personal & Business Stationery
Tickets, Forms, Folders, Menus
Labels, Pads & NCR sets
Wedding & Funeral Order of Service

Signs, Banners
Pull-ups & Wrap Display Stands
Window, Boat & Vehicle Graphics
Display Signage, Magnetics
Vinyl Lettering & Stickers
Promotional/Advertising Boards & Signs

01392 873822

sales@optimagraphics.co.uk

www.optimagraphics.co.uk

ADVERTISING RATES FOR 2022 - PRICES HELD FOR 2ND YEAR RUNNING!!

Advertisers who book 6 issues will effectively get one advert free, and those who book 11 issues (i.e. a 12-month period) will get 2 adverts free.

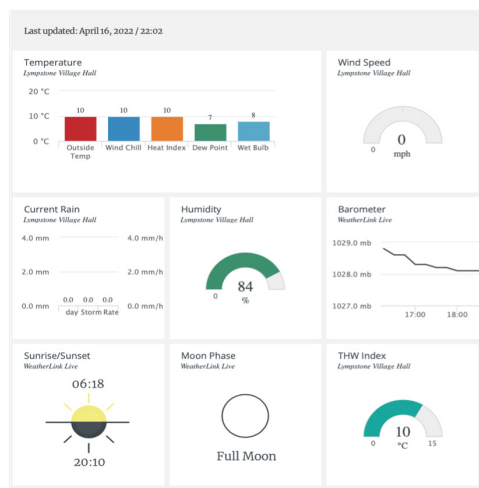
ADVERT TYPE	MONTH	HALF YEAR (6 issues)	YEAR (11 issues)
Full Page	£100	£500	£900
Half Page	£50	£250	£450
Quarter Page	£25	£125	£225
Boxed Advert	£15	£75	£135
SMALL ADS (min. charge £5)			
Example: 5 lines or less	£5	£25	£45
Example: 7 lines or less	£7	£35	£63
Example: 10 lines	£10	£50	£90

Copies of the Lymington Herald are delivered free to every household in Lymington (approx 1100) every month with further copies being sold through the village shops. Please send your enquiries to Steve Morgan : sjmorgan222@gmail.com

DISCLAIMER This news letter is compiled from emails sent to the editors by numerous people and very little of the information is checked before publishing which is done in good faith. *Rob and Claire Hilton, Editors*

CALLING ALL WEATHER WATCHERS!

The Flood Resilience Group and the Village Hall team have set up Lypmstone's very own weather station, sited at the VH. Its data is accessible, free, to anyone on line. Our weather station, a Davis Wireless Vantage Pro 2, has sensors that capture real time temperature, rainfall, wind speed and direction, barometric pressure and humidity, and a few other functions as well! There is a weather forecast too.



Here is a guide to accessing the weather station data. The steps below apply if you have a PC or laptop; instructions for mobile access are at the bottom of the page. It should take no more than 10 minutes to set up.

- Search for Weatherlink.com
- Click the 'Sign Up' link to create a User Name and Password.
- Once you have created an account,

you will see a screen that says 'Unlock the full potential of your weather station'.

- Under the 'Basic' column, click on the 'Get started' link.
- This takes you to your Weatherlink home page. Go to the 'search locations & stations' box at the top right of the screen.
- Start to type in 'Lypmstone Village Hall'. Click on Lypmstone Village Hall name when it appears.
- In the black area at the top of the map page, click on 'bulletin'.
- You will see the screen below. To change the units, click on the small 'person' icon on the top right of the screen, and scroll down to unit measurements.

Note: There are tutorials available on YouTube, e.g WeatherLinkCom 2.0 Walkthrough

To access the weather station on a mobile or tablet, search for the Weatherlink app, log in (if you already have a user name and password) or sign up, and follow the prompts.

Our thanks to our Devon County Councillors for funding this, and to the Parish Council and the Village Hall for their support.

Phil Corcos, LFRG