

Volume 46, No 8

May 2023
50p where sold

THE LYMPTONE HERALD



Editors: Claire and Rob Hilton - lympstoneherald@hotmail.com | 07739969311

Advertising: Steve Morgan sjmorgan222@gmail.com | 01395 276020

Copy deadline for the next issue : Wednesday 17th May, 6pm by email

Distribution by Robin and Judith Telfer Tel. 272275

Cover Illustration: Jenny Moon (Lympstone Cliffs Collage)

Village website: www.lympstone.org | webmaster@lympstone.org

PARISH COUNCIL NEWS

APRIL 2023

LPC held their monthly public meeting on Monday 3rd April in the Meeting Room.

Wildlife Festival 3rd June

Mary Truell and Rebecca Abrahams both from the 'Wild About Lymptstone' group were present to talk about the planned wildlife festival. They made the following points: Wild About Lymptstone group was set up a year ago and the Devon Wildlife Trust had challenged local groups to do something to support wildlife. The Wild About Lymptstone group had received lots of interest and successful ideas. They wanted to now celebrate the achievements in the Church. The main aim of the festival was to get people talking about all kinds of wildlife and nature. The timings will be approx. 10am – 3pm with talks from many people including Harry Barton from Devon wildlife trust. Arts and crafts activities will take place, local musicians will be playing, and tea and cake will be available. Many people have offered to help including leading walks around the village and the local school has been invited to join in. From the end of April the running order for the day will be finalised and publicised. So please watch this space!

Clerks Report

May 2023 to May 2024 PC meeting dates: The following dates were agreed: Thurs 18 May (to include the Annual Parish Meeting at 7pm), Mon 5 June, Mon 3 July, August – no meeting, Mon 4 Sept, Mon 2 Oct, Mon 6 Nov, Mon 4 Dec, Mon 8 Jan 24, Mon 5 Feb, Mon 4 March, Mon 8 April (to include the Annual Parish Meeting at 7pm), Mon 13 May.

Correspondence:

The Clerk read the correspondence received from Sycamore Class of Lymptstone Primary School regarding the state of Wotton Brook and their posters designed to display around the village. The posters were circulated amongst all present. It was agreed that the children's posters could be display in notice boards and, with permission, on private land/gardens along the Brook.

Finance: The Clerk explained that the end of year spreadsheet tallied with the bank balance, and she would report to the PC in May after the meeting with the internal auditor.

Reports from the Chairman, East Devon District Councillors and Devon County Councillors

The Chairman read his report: This is the last meeting of the year. Thank you for the time and commitment Councillors have put in this year, a special thanks to Di who steps down for a well-earned rest. Thank you to Devon County

Councillors and East Devon Councillors for the advice and support during the year. Finally thank you to Lucy, without her hard work, commitment, and advice I and the rest of the PC would not have got anything done this year.

County Cllr Trail explained that Highways had received an email from a resident asking for a notice for 'dogs on leads' along the Exe Estuary Trail. He added that no more notices would be added as this was not enforceable. He highlighted that the Trail was a shared space and people must respect all users. County Cllr Scott recognised all the hard work that the Parish Cllrs did and thanked them all for doing a great job.

Assets and Amenities Committee

Cllr Lewis reported that the pollarding of the Lime trees along the Avenue had taken place on the 20th March. He was happy with the work completed and it had all gone smoothly. He felt that most habitats had been retained and there was little visual impact.

Planning and transport

Cllr Linfoot gave a summary of Cllr Francis' reports to the PC:

GH/72 Land North of Meeting Lane - Planning committee met with the landowners. They outlined their vision for the fields with approximately 131 houses being built, which would be a

housing density of 15 an acre (many developments are 20 plus houses an acre). They are keen to be involved in the development and wish to work with builders who would build the type of houses they would want to live in. Approximately 7 acres would be given over to green space, and a proposed access/egress in Nutwell Road, with footpath connecting to Meeting Lane/ Glebelands.

GH/73 Land South of Meeting Lane - Planning committee met with Nick Yeo and colleagues from 3 West development. They outlined their plans for the fields, with 42 houses being built, with a mixture of 1/2/3/4/5 houses and bungalows. Vehicle access from both Meeting Lane and Strawberry Hill, and pedestrian access to Strawberry Hill, Meeting Lane and Glebelands. A pond/attenuation tank in the field next to Meeting Lane. They stated they were to run a web-based consultation very soon, with the intention to submit a planning application this Spring.

District Cllr Jung explained that EDDC could not demonstrate a five-year land supply but policy had changed and EDDC could prove a four-year land supply, but it was not law yet. Housing numbers still had to be provided by the Government.

Community committee

Cllr Payne explained the Hub new building consultations had not taken place due to user groups not being able to make the set dates. It was agreed that an open session will be held in the Hub building on the Kings Coronation Day for all members of the public to view the plans. Post-it notes would be available for people to comment.

Cllr Linfoot presented the 'Save the date' poster for the Kings Coronation event which had been published around the village, on the website, PC Facebook page and in the Herald. He added that a more detailed poster would be published nearer the time.

The Annual Parish Meeting will be held on Thursday 18th May at 7pm in the Meeting Room, Lympstone Village Hall. The next PC meeting will immediately follow at 7.30pm.

*Clerk to the Council: Lucy Tyrrell,
c/o Minnows, Longmeadow Road,
Lympstone, EX8 5LF
Tel: 07890 717081
Email: lympstonepc@gmail.com*

PARISH CHURCH

Coronation Celebrations

The church will celebrate the coronation with displays of flowers around the church by our local and very talented arrangers. This display will not be a full 'Flower Festival' but much more on the lines of the ones seen recently for the late Queen's Diamond Jubilee, 90th Birthday and the celebrations at the time of the 600th anniversary of the church building in its present form in 1409. They were enjoyed by all who came to see them. So we hope everyone in the village will come and spend some time enjoying the displays over the weekend. The church should be open 09:00 - 18:00.

The Coronation itself will be streamed live from the BBC on the large screen using the free to broadcast coronation arrangements from 11am. All who would like to watch the service with others to share this historic event are welcome. Tea and coffee will be available from 10 until the service ends. (the last coronation was 3 hours). You are welcome to come to church and share an experience unseen by anyone under seventy years old!

The Sunday service next day is at 09.30 and will be a Journey service for all with Tom James.

Normal services and events for the rest of the month are continuing as usual.



SAVE THE DATE!

On Saturday 6th may

**Lympstone celebrates the king's coronation on
candys field.**



**From 3pm:
Family and friends' picnic,
Childrens activities,
Laughter yoga,
BBQ and refreshments,
Live music from 5pm:
Lympstone Academy brass, looseners and
salty bandits!**



Hilton Barnfield Architects

EXETER PROPERTY AWARDS 2022

WINNER - RESIDENTIAL DEVELOPMENT OF THE YEAR

www.hiltonbarnfield.co.uk • 01392 349222

RE: THE LATE NICK LLOYD

I have been informed that the magnificent sum of just over £800 has been donated in memory of Nick. This will be divided equally between Exmouth & Lympstone Hospice Care and Exmouth Lifeboats.

Thank you to everyone who gave so generously.

Denise, Mel and Adrian Lloyd

LYMPSTONE HARBOUR

The Lympstone Fishery & Harbour Association (LFHA) successfully completed its 36th annual craning of boats from the hard standing at the harbour into the brook. As we repeat this exercise in the autumn, but in the opposite direction, we have now conducted 71 craning operations. The hard standing will be open to the summer small boats from 7am on Wednesday the 12th of April. The Association is grateful to residents for easing the passage of the large crane needed for this annual event.

It might be of interest to readers of the Lympstone Herald that the Exe Estuary is quite unusual in that the foreshore and river-bottom are not

owned exclusively by the Crown. The Earl of Devon owns an area between Starcross and Turf known as the Manor of Kenton. Lympstone manor passed from the Dynham to the Drake family at Lympstone and runs from Darling Rock to Courtlands Cross. It includes the foreshore up to the line of Mean High Water Spring Tides, the ramp at Sowden End and the Harbour, Hard and Slipway in the village. The title to this land was purchased by the Association in 1996 from Mrs Clark, the doyenne of Belvedere. A map of this property is shown on a sign fixed to the railings at the end of the harbour wall.

In addition, the Harbour Board of the Association (its executive committee) negotiated and pays for a 25-year lease on the land from Darling Rock to the Northern abutment of the railway bridge at Parsonage Stile. In all, over 92 acres (71 acres freehold and 21 acres leased) is owned by the LFHA. Part of this property at the Southern end has been leased to Ingham Fisheries for use as a shellfish farm. The property provides facilities to residents of the parish – a necessary qualification given that the Board can only grant a finite number of licenses. More of this history and how to apply for membership can be found at lympstoneharbour.org.uk.

*Colonel Graeme Wheeler,
Chairman, LFHA.*

L(E)TTER

Dear Editors

I just wanted to thank the gentleman who I saw clearing the appalling amount of rubbish and litter deposited along the verges of Nutwell Road and wondered if something could be printed in the Herald to show my appreciation and hopefully that of other villagers. It had become a real disgrace and a sad reflection on the current habit of throwing such items from passing vehicles.

Let us look after our environment and keep our beautiful village tidy.

Thank you again and I apologise for not joining you on that occasion but was celebrating a biggish birthday with family and friends. It was nonetheless appreciated as an extra present!

With regards
Joan Dunkley

LYMPSTONE SPRING CLEAN

Many thanks to everyone who has already helped to Spring Clean Lymptstone. With an extra bank holiday coming up we thought it was a good time to have a bit of a clear up. So, what can individuals do? Take a look outside where you live to see if there is something that needs a tidy. At this time of the year there may be pots which need clearing out and plants overhanging paths which could do with a chop.

I've been contacted by many people who regularly pick up litter. Thanks to these people, there doesn't seem to be a huge problem in our village except for a couple of hot spots. It does seem that the proximity of litter bins makes for less litter. Who wants to pick up a piece of rubbish and then have to walk home with it to put it in a bin? Maybe that's something that needs to be addressed, with more bins needed.

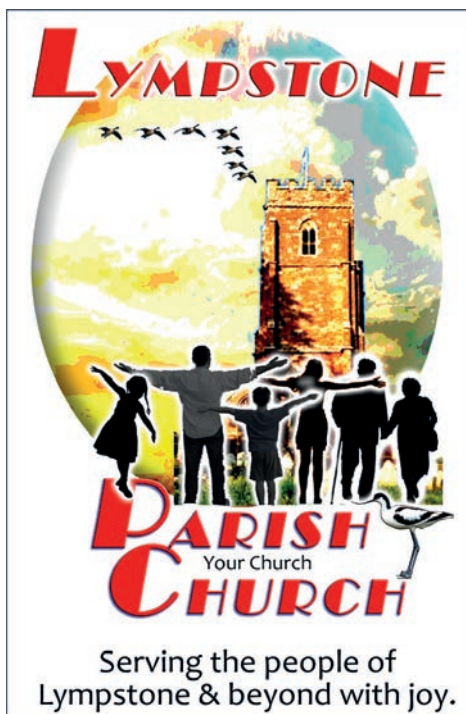
I think we should all be grateful to the person who did a litter pick along the road to Nutwell, collecting up nine bags of card and plastic and four bags of cans (over 300 cans in total). Unfortunately, that may not be the end of it, as, no doubt, there will soon be more rubbish along that road. It's up to us all to make sure that we don't contribute any rubbish

ourselves. The photograph shows just some of the litter collected.

Thank you again to all the people who have helped give Lympstone a bit more sparkle and hopefully, weather permitting, we can relax and enjoy the May bank holidays in our lovely village with it looking its best.

If you take any photographs of Lympstone looking beautiful this Spring, we'd love to see them at the Garden Club.

Suki Commin
Lympstone Garden Club



WILD ABOUT LYPMPSTONE

Lympstone's 1st ever Wildlife Festival Day is fast approaching! Bring a friend and come along and join us on Saturday, June 3rd, 10am to 3pm, at our lovely Church.

Meet a host of local people who will be running an amazing range of displays, stalls, talks, village wildlife walks and various hands-on nature-based activities for kids and adults. With local music, refreshment and a fabulous raffle, this fun-filled day is about meeting new people, sharing stories, exchanging knowledge and skills, and inspiring ideas for further action that will benefit both wildlife and people.

We are very honoured to have the CEO of Devon Wildlife Trust, Harry Barton, talking at 11 o'clock on the latest news from the Trust and the wider world of wildlife. Get there early - grab a tea, coffee, piece of cake, buy a raffle ticket and look round the displays before his talk.

The day will be celebrating the remarkably creative ways, large and small, Lympstonians and friends are now, at this very moment, engaged in trying to help restore our much depleted wildlife and natural spaces. In so doing we take up the challenge Devon Wildlife

Trust set before us last year that by 2030 at least one in four people from Toddlers to Great Grandpas were fully engaged in practical ways of helping our declining Wildlife to revive. Well Done!

Your remarkable offers of contributions to the festival have varied enormously, all bringing fun and enjoyment to our village and to our visitors. They will showcase some larger projects that have demanded hard physical labour; gardens and much sort after allotments, many reverting to old organic methods; gifted people, inspired by nature, who spend hours creating works of music, art, craft or literary works, recording our sometimes overlooked urgent need for beauty in our lives. Many others have patiently observed and recorded weeks of the habits of a singular or group of creatures attempting to remake spoilt habitats. I could go on...

So much is happening in the village from simple joys gained from watching the antics of a bird on a small feeder; surprises revealed from night cameras; wildlife pond building; superb photography of birds and snakes; professional knowledge of particular species; the wildlife-friendly restoration of Gulliford Burial Ground and so much more if only time and space allowed, but many thanks to all those generous

Lympstone people offering to help in all sorts of ways.

Hot on the heels of the coronation, I am sure our newly crowned King, passionate about wildlife, would love to hear how Lympstone and many other villages in Britain are engaging in trying to restore and enhance our unique natural surroundings and wildlife.

Let's make it a happy, positive day of all that IS, and thank you everyone helping in all sorts of ways to make it so.

All the best, Mary Truell and Rebecca Abrahams

Email:

truell@me.com

rebecca_abrahams@yahoo.com

Website:

<https://www.lympstone.org/clubs-societies/wild-about-lympstone>

Facebook:

[https://www.facebook.com/](https://www.facebook.com/WildAboutLymptone)

WildAboutLymptone

LYMPSTONE GARDEN CLUB

This year's Village Show is on Saturday 19th August.

The soil is warming up ready for spring cultivation promising harvest in August. Here's a taster of classes you could enter:

Three carrots

Three parsnips

Three beetroots

Six shallots

Three onions grown from sets

Three onions grown from seed

Three red onions (from sets or seeds)

Two Globe Artichoke heads

Five potatoes

One potato (heaviest)

One runner bean (longest)

Six runner beans

Five pods other legumes

Two cucumbers

One vegetable marrow (heaviest)

Two courgettes (20cm maximum)

Five tomatoes (with stalks left on)

Truss of cherry tomatoes

Three leeks

Three peppers

Any other pair of vegetables

Look out for a further taster next month.

WG Wilkinson Grant & Co

Property search & acquisition service

**Struggling to find
your next property?**

Our **free*** Home-Movers'
Search and Acquisition
Service for Local Vendors
might be what you need!

**Speak to one of
our team today.**

Topsham - **01392 875000**
www.wilkinsongrant.co.uk

*T&Cs apply



SALES | LETTINGS | ACQUISITIONS | INVESTMENTS
LAND & DEVELOPMENT | PROBATE & EXECUTOR



SPRING CONCERT IN LYMPSTONE

Lympstone Parish Church is hosting two award-winning young string players on Saturday, 13th May. Joel Munday, the exciting Devon violin player and winner of the Royal College of Music Concerto Prize, will perform Bach's Violin Concerto, and the Bulgarian viola player, Vanessa Hristova, will join him for Mozart's Sinfonia Concertante.

This concert is the first visit to Lympstone by East Devon's highly popular Chamber Orchestra, the ISCA Ensemble, conducted by its Musical Director Roger Hendy. Their programme also includes a Handel Concerto Grosso, a Haydn Symphony, and Elgar's wonderful Serenade for Strings.

Tickets at £12 for this attractive programme of concert classics are on sale from Susannah's Tea Room or online at lympstone-entertainments.net

LYMPSTONE ART EXHIBITION

Lympstone Art Exhibition will be held during half term week from Sunday 28th May to Sunday 4th June, 11am to 5pm in the Village Hall, School Hill, Lympstone, EX8 5BE. The exhibition closes at 2pm on Sunday 4th June.

The exhibition includes a wide range of local artists' works, framed paintings, prints, ceramics and 3D items. It is a great opportunity to admire our local talent and to buy very reasonably priced original artwork. Entry is £1, free to age 16 and under.

The exhibition will be judged this year by Angie Seaway, an accomplished Exmouth based artist.

We hold a raffle for an original painting and a secret auction for a painting, both by talented members of Lympstone Art Group. Tea, coffee, and homemade cakes are on sale, so bring some friends and pay us a visit.

Judith Carter
Lympstone Art Group

YOUNG ARTISTS' COMPETITION

We have a competition for young people, age 2 to 16, to draw or paint a picture on a postcard. Free postcards available at the Exhibition 28th May to 3rd June and they can be drawn or painted at the Village Hall or taken home to complete.

For those not here at half term, cards can be collected from Susannah's Tea Room, The Strand in the week commencing Friday 19th May and completed cards can be posted through

the door of Lime Kiln House next door. Postcards completed during the exhibition week to be returned to the Village Hall by 5pm on Friday 2 June.

Judging and Prize Giving for different age groups will be at 2.30pm on Saturday 3 June.

Judith Carter

Lympstone Art Group





FUND-RAISING SUPPER FOR THE TURKISH / SYRIAN EARTHQUAKE APPEAL

On Sunday evening 16th April, 40 guests met for a Turkish Mezze fund-raising supper held at the Lympstone Sailing Clubhouse. Everyone had a thoroughly good evening, enjoying a wide choice of mezzes, good wines and Turkish beer, with the spectacular views over the Exe as a backdrop.

We raised £685 and this will go to the DEC Turkish-Syrian earthquake appeal. Our donation will help DEC charities to provide medical treatment, shelter and

winter survival kits and to ensure people have food and clean water both now and in the weeks and months ahead.

Thank you to all of those who gave prizes for the raffle, particularly The Swan and Mesopotamia, the Turkish shop in Sidwell Street, Exeter. Thank you to all of those who shopped, cooked, ran the bar, set up, cleaned away and who washed up the mountains of dirty plates. And thank you to all of those who joined us, for being so generous and for making it such a very pleasant and successful evening.

Lympstone Supper Club

MONTHLY COMMUNITY HUB LUNCHES

Village volunteers continue to prepare and cook a 2-course hot Sunday Lunch at the end of each month. This is then served in the Village Hall or delivered direct to a recipient's home address. These lunches are provided for anyone who wishes to join us, either having a meal delivered or to eat socially together at the Hall. A small donation is welcome but not essential.

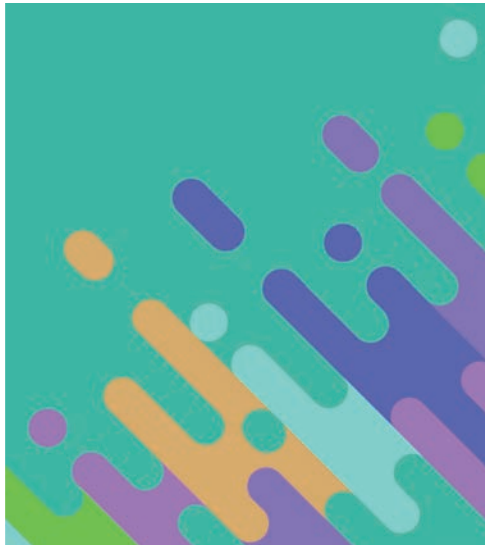
Our Devon County Councillors, Richard Scott and Jeff Trail very kindly cover the cost of the Hall hire from their funds, and most of the cost of the food is covered by very generous local donations.

If you are interested in joining us, or would like more information, please contact Linda Lyon at malcandlinda@aol.com

However, there will be no Sunday Community Lunch at the end of April. Instead, we will have a Coronation Cream Tea on Sunday 7th May to celebrate the Coronation of King Charles III. The home delivery of sandwiches, cake and scones will be at 2pm and the Tea in the Village Hall will commence at 2.45pm.

The next hot Lunch after this will be on Sunday 25th June at 1pm.

Many thanks, Linda Lyon



Lympstone's Community Workspace

Collaborate . Connect . Community

The Hub (formerly Youth Club)

Candy's Field

Lympstone Village

Open 8am-6pm Mon-Fri

£10 per day (includes WIFI, tea and coffee,
printer facility)

Reduced rates on weekends and for
students. Book via link below.

<https://www.bookinglive.io/c/lympstone-parish-council/book>





Royal Academy of Dance and IDTA

Ballet grades and majors

Start to Dance from from 2½ years

Dottie Markham RAD CBTS

Frankie Rowsell RAD CBTS

Tel: 07885829531

Tel: 07713243369

woodburydancestudio@outlook.com

**Classes at Woodbury CofE Primary
School**

PASSMORE PLASTERING

- Domestic and Commercial
- 30 Years Experience
- Internal Plastering
- External Rendering
- Traditional Lime Plastering
- Free Estimates and Advice
- Reliable, Professional Service

Telephone: 01392 432872

Mobile: 07952 643513



**WINDOWS, DOORS,
CONSERVATORIES,
ROOF LINE and
GENERAL PROPERTY
MAINTENANCE**

T: 01395 225643

M: 07794 477045

e-mail: r_acca@hotmail.com



Where quality matters!

01395 277 236 / 075 28 970 950

**Liamellisroofing@icloud.com
www.liamellisroofing.co.uk**



M HOBBS ROOFING

07525146585

mhobbsroofing@gmail.com

Roofing contractor

07525146585

1 Pines Road
Exmouth

THE HERALD HISTORY SPOT

The Tale of the Pinkish Purple Pebble (Part 2)

This is the second part of a brief overview of the possible and imagined story of a pinkish purple pebble from Woodbury Common. The pebble has lines of dark red, a white stripe and a patch of yellow ochre colour. The story is geology, archaeology and history. Part 1 covered the geological periods before sophisticated life evolved.

More complex plants and creatures were evolving at this time and it is possible that this rock might have contained fossils of microscopic and visible forms, such as trilobites. Living things continued to evolve through stops and starts and massive periods of extinction. The rock was later accompanied in its time journey by reptiles, tiny dinosaurs, large dinosaurs and many sea creatures.

Another 100 million years passed and the land continued to move, forming and reforming. Through the actions of heat, frost, wet and wind, a chunk of this rock that was originally the cupful of sandstone, eroded along with the rest of the rock of the French mountain range. It was washed into a great river that, around 240 million years ago, flowed across land that bridged France and England. It ran northwards across arid desert towards what would become the midlands of the United Kingdom.

This was in the Triassic period.

Through erosion in the river, the craggy rock broke up to form quartzite pebbles and more sand. The new pebbles and sand in turn played a part in eroding other rock.

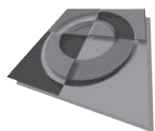
And now there is a single pebble on which to focus – a pinkish purple pebble, with a patch of yellow ochre and a vein of white quartz. But it had not finished its journey. Land was still moving. The English Channel was being formed, and the wet land on which the pebble lay heaved upwards again to form heathland near to the sea in East Devon. The pebble was and is still washed in streams that form during periods of rainfall or flood.

So the pebble came to lie in peaty ground. The ground of the heaths was not much disturbed when Neolithic men elsewhere were learning to work the land and grow crops. There were just too many pebbles and not sufficient soil. However later during the Bronze age, when people were starting to make metals, a couple of thousand years BC, the land was used as a site for rituals, the celebrations of births, pairings, deaths and other events. People built cairns of pebbles and the pebbles were specially selected for their colours

and sizes. Two of these cairns were aligned with a distinctive hillside on the coast that had been a spiritual site for earlier peoples. We might imagine that the purple pinkish pebble was picked up from the bed of a stream by a man who sought pebbles for the cairn, but it was the wrong size and was discarded near to a track used by people over the centuries to cross the heath. There, it was picked up, admired and put down, scuffed by feet in crude leather sandals, clogs, and more recent shoes, picked up and put down, kicked by the hooves of horses and donkeysand then I picked it up.

And the tale of the pebble will go on long. It may well become crushed back to sand and yet again reformed, or in other land movements, taken deep under the earth to become molten again.

Part 1 of this piece was in the last edition of The Lympstone Herald. It is extracted from a story of the same title in 'Folk Tales of Rock and Stone', (Jenny Moon, published by The History Press). Should you want to read the whole piece, please contact Jenny (Jennyamoon@gmail.com).



**optima
graphics**

TOPSHAM LTD

*We provide a high quality, good value,
prompt design & print service*

silk screen, digital, wide format, litho printers
full design service including web & email graphics, digital forms

Brochures, Posters
Leaflets, Flyers, Newsletters
Personal & Business Stationery
Tickets, Forms, Folders, Menus
Labels, Pads & NCR sets
Wedding & Funeral Order of Service

Signs, Banners
Pull-ups & Wrap Display Stands
Window, Boat & Vehicle Graphics
Display Signage, Magnetics
Vinyl Lettering & Stickers
Promotional/Advertising Boards & Signs

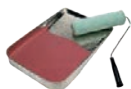
01392 873822

sales@optimagraphics.co.uk

www.optimagraphics.co.uk

PAINTER & DECORATOR

FREE Advice & Quotes



Specialising in superior high quality
Interior painting and decorating
Reliable & trustworthy
No job too small

PETER BOND

Mobile: 07971 006957

Office: 01395 489189

Email: bondpeterjohn@hotmail.com

Nev Wrathall DECORATORS

07976 556142

newwrathdecorator@hotmail.co.uk

www.newwrathalldecorators.co.uk

City
Guilds
Qualified

Dulux
Safely
Decorators



HOUSE



SELF STORAGE MADE EASY

WOODBURY

Woodbury Business Park
Exeter EX3 1AV

01395 239400

ROCKBEARE

Rockbeare Business Park
Exeter EX3 2EZ

01404 597560

www.house-it.co.uk

**COMPUTER
REPAIRS**

**ELECTRO
COMPUTERS**

NO FIX - NO FEE



01395 548151 / 07944 051987

support@electrocomputers.co.uk

CLOCK REPAIRS

**Terence C. Matthews,
Horologist**

Tel: 01395 273563

All clocks repaired, including
Westminster Chimes, Wall Clocks,
Grandfather & Grandmother Clocks,
Dial Clocks, Long Case and Carriage
Clocks.

Free estimates provided, with house
visits.



HOME HELP!

Mrs V.A. Perry: Experienced, reliable.

Support with transport to social/
community events, trips out and
medical appointments. Support with
shopping, household management.
Companion service.

DBS Enhanced Certificate, insurance
and references available.

For a confidential, no obligation
discussion of your individual needs
and requirements ring **01395 232865**.

ESTUARY VIEW

The Window Company



Discover a better way of buying windows and doors

Friendly people, quality craftsmanship and great service!

TIMBER • ALUMINUM • UPVC



01395 201131 www.estuaryview.co.uk

ADVERTISING RATES FOR 2023 - PRICES HELD FOR 2ND YEAR RUNNING!!

Advertisers who book 6 issues will effectively get one advert free, and those who book 11 issues (i.e. a 12-month period) will get 2 adverts free.

ADVERT TYPE	MONTH	HALF YEAR (6 issues)	YEAR (11 issues)
Full Page	£100	£500	£900
Half Page	£50	£250	£450
Quarter Page	£25	£125	£225
Boxed Advert	£15	£75	£135
SMALL ADS (min. charge £5)			
Example: 5 lines or less	£5	£25	£45
Example: 7 lines or less	£7	£35	£63
Example: 10 lines	£10	£50	£90

Copies of the Lympstone Herald are delivered free to every household in Lympstone (approx 1100) every month with further copies being sold through the village shops. Please send your enquiries to Steve Morgan : sjmorgan222@gmail.com

DISCLAIMER This news letter is compiled from emails sent to the editors by numerous people and very little of the information is checked before publishing which is done in good faith.
David Hawes (temporary stand in for Rob and Claire Hilton, Editors).

SMALL ADS

GCSE & A LEVEL SCIENCE TUITION

by an experienced, current, science teacher. All science subjects to GCSE and also A level Chemistry and Biology taught. Tel: Mark Moffatt on 07730 877889

PROPERTY MAINTENANCE -

Carpentry, Flooring, Fencing, Gates, Decking, Bathrooms, Kitchens, General Repairs. Free advice & estimates. James Waddell 01395 263496

HOLIDAY COTTAGE Cosy cottage in centre of village. One double room and further room with bunks. Minimum 3 nights in low season and 4 nights in high season. Call Pete or Jan on 01395 488123

WITHALL'S HOUSE BED AND BREAKFAST. A modern and spacious home close to the heart of the village. Ample parking and flexible accommodation. Call Pete and Jan Hardy on 01395 488123 Or visit www.lympstonebedandbreakfast.co.uk

GARDEN JOBS - Jenny Moon

Jenny is still digging for Oxfam.
£12/hour, all to Oxfam.
Tel: 01395 708850

LADY DECORATOR

"Touch of Gloss". Over 20 years experience. Please contact Jill Simpson on T: 07932 684241
E: jillsimpson10@gmail.com

THE OLD DAIRY B&B AND HOLIDAY COTTAGE, LYMPSTONE

Luxury B&B and self-catering cottage. both with secure parking.
Call Den/Jules on 07595 540562
or book on-line at
www.theolddairylympstone.co.uk

PROPERTY & HOUSE MAINTENANCE TREVOR HARRIS

Please contact Trevor on:
L: 01395 223916 or M: 07969 231333
e: trevor.harris1@sky.com

SIMON AND JACKIE QUICK THE LOG MAN AND LOG LADY

For all your log, coal, kindling and gas supplies. Tel: 01395 267490

MATHS TUITION Experienced tutor available to teach primary to GCSE level maths. Reasonable rates Tel: Jane Moffatt on 279952 or 07730877889

TINYPAWS

Cat-Sitting, and Boarding of other Small Pets (not Cats)
Please call for more information.
M: 07385 048150

HAIR BY SHARON

Mobile Hairdresser

Have your Hair done in the comfort of your own home.

Please ring Sharon on:

M: 07385 048150

GARDENING SERVICES BY LD PRIOR

18 years of experience, and

RHS Advanced qualified

T: 07832-109041 or 01392 496798

E: leeprior20@gmail.com

Website: www.ldprior.com

FOR SALE:

Cycle Trailer, Bellelli B-Taxi, 2 child carrier, Total max weight 25.5 kg. **£60**

Child's Marathon Bike,

Halford's Apollo Gridlok, suitable age 8 years. Front

Fork Suspension, Shimano gears. Nearly brand new. **£50**

Tel: John on 07976 974752

FOOT HEALTH PROFESSIONAL

Rebecca Bahrami MCFHP, MAFHP

Foot care in the comfort of your own home. Nail cutting, fungal nail treatment, corns and callus, verruca, diabetic footcare.

Please tel 07528-302901 or

email Rebecca.foot@yahoo.com

DOWNSIZING

Donations would be appreciated for the Devon Air Ambulance for the following items, which must be collected:

Call 07873-574396 after 6.00pm

Two 4 draw filing cabinets

Calor Mini Heat Gas fire + bottle (both new)

Vibraplate exercise machine

Hostess heated food trolley

MOVING OR DOWNSIZING?

Growing family looking for large house in Lympstone and surrounding areas
Min. 4 beds and views preferable.

Buyers are ready to go!

T: George Turnbull 07815-867807

E: george@altitude-am.com

MINDSET COACHING AND HYPNOTHERAPY

10 years experience as a Licensed Master of NLP, Timeline Therapy™ and Hypnotherapy.

Book a free Discovery Call today.

T: 07957 556856

E: jess@jessicavassallo.com

Visit: www.jessicavassallo.com

Support our vision for a clean, healthy and active Exeter and Devon.

Ride On
Cycling for All

Help us get more people cycling.

We refurbish secondhand bikes to get more people cycling in an affordable and sustainable way, which is made possible thanks to your help.

Donate a bike!

If you have any old or unused bikes taking up precious space, don't let them go to waste. Consider donating them to our charity.

We've been able to put
over



bikes back on the road
since 2011!

Drop-off Location

**8 Grange Close
Lypstone
EX8 5LD**

Call Steve Morgan on 01395 276020

61 Haven Road, Exeter, EX2 8DP
Registered Charity Number: 1174055