

**Introduction:** This document describes the steps that will be taken **before, during and after** a severe flood incident, when there is possible risk to life and/or widespread damage to property or infrastructure.

Note: The highest level of flood risk occurs when recent or current heavy rainfall combines with high tides. The *Estuary flood risk* is from waters overtopping the defences in rough Estuary conditions, or failures in the defences. The *Inland flood risk* may be caused by an overtopping watercourse (Wotton Brook or Harefield Stream) after heavy and sustained rainfall, by a blocked watercourse, or tidal locking. This flooding may be exacerbated by additional surface water caused by blocked, inadequate or overwhelmed road drains.

<b>1. Before the incident:</b> Flood wardens monitor high risk conditions, including trigger levels at key locations		
Estuary	Location	Trigger level
Village Frontage	Estuary Quay Lane, The Strand, and Harefield Cottages	Significant overtopping of defences or local failure of defences
Sowden End	Area between allotments and railway bridge	Estuary rising above embankment level
Inland	Location	Trigger level
Lower village	Underhill	Floodplain capacity exceeded; Extensive or abnormal pooling
Lower village	The screen	Water at platform level
Middle village	Church Road	Known pooling locations exceeding norm
Pretty Corner	Pretty Corner	Culvert blocked or unable to take volume of water from Harefield Stream, rapid and deep pooling of water on the road

**2. During the incident:** (refer to Phases 1-6 of the flowchart overleaf)

When Emergency Services arrive:

LFRG Team leaders make themselves known to the Incident Commander. Provide situation report.

FWs relay information to the community (e.g. by door to door visits), such as areas to avoid/promote health, safety and well-being

FWs may be asked to assist with evacuation and/or provide support by directing people to a place of safety

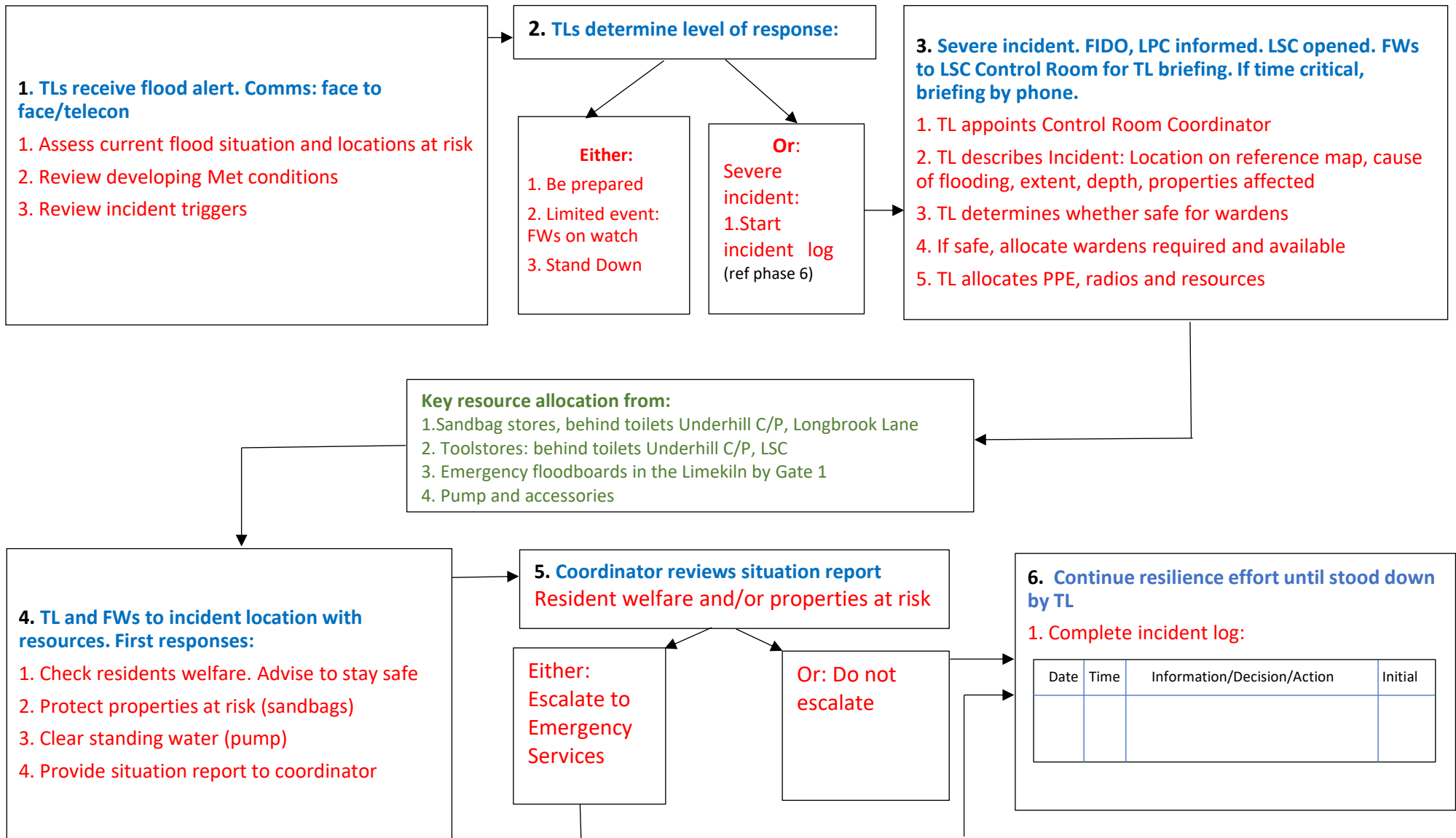
**3. After the incident**

Collect information about the flood:

- Collect/Collate photos
- Complete incident log

Help relay concerns, local knowledge and issues to the relevant authorities; be prepared to assist with the review and possible update of flood response procedures.

Make available flood recovery advice e.g. <http://www.bdma.org.uk/publications/flooddocs>



**Key to abbreviations + important contact information**

EA Environment Agency. LPC Lymptstone Parish Council  
 FW Flood Warden. LSC Lymptstone Sailing Club  
 FIDO Flood Incident Duty Officer (EA): Tel 0800 6781247

TLs Team Leaders: Alan Burton, Estuary Tel: 07422 651169  
 Phil Corcos, Inland Tel: 07715 454726  
 LPC Lymptstone Parish Council (Clerk) Tel: 07890 717081